

F 50

Musik

L. 5

Musik
F 50

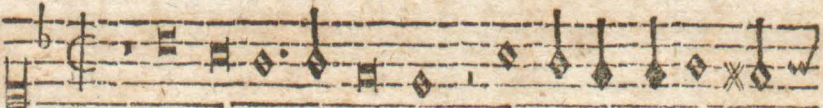
Faint musical notation on a page with a red circular stamp. The stamp contains the text: Ex Biblioth. Regia Berolinensi.

Ex
Biblioth. Regia
Berolinensi.

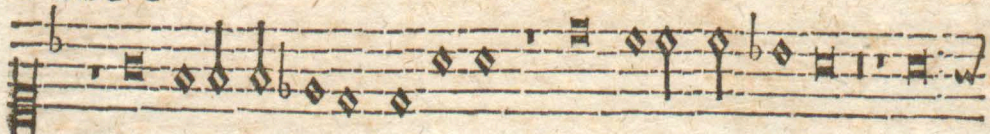
II. CANTVS

à 5,

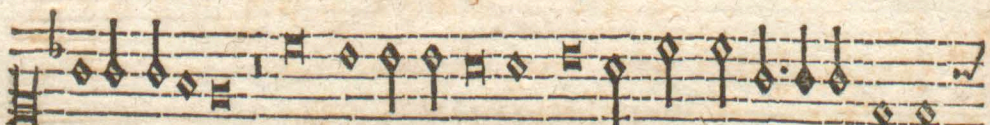
B. F.



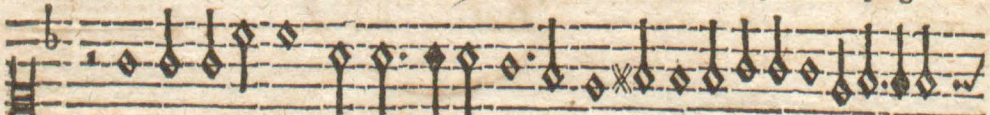
As e-go crude-les, ij



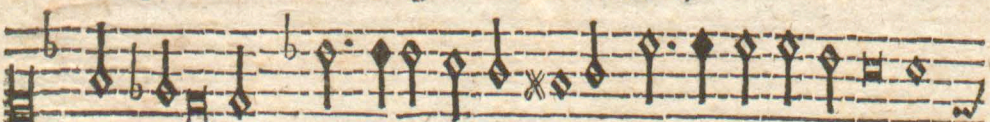
has ego crudeles crudeles, ij Has



ego crudeles, ij homo pro te perfero plagas,



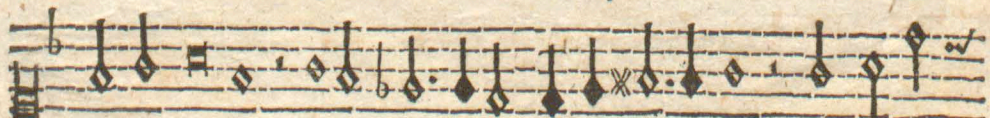
Atque meo morbos sanguine curo tuos, ij



sanguine curo tuos ij



Vulneribusque me- is ij vulneri-



busque meis tu-a vul-nera ij mortēque



mortem mor- tem, tollo Deus pro te, plasmate factus ho-



mo ij plasmate factus homo plasmate



factus plasmate factus homo fa- ctus homo plasmate factus



homo plasmate fa- ctus ho- mo.



Handwritten musical notation on staves, including notes and clefs, which are significantly faded and difficult to read.

Ex
Biblioth. Regia
Berolinensi

Additional handwritten musical notation on staves, including notes and clefs, located below the library stamp.

Faint rectangular stamp or label on the right page, possibly containing library or archival information.

EX

BIBLIOTHECA

POELCHAVIANA.

Mees-pract. ont.

