

Was es Ihnen möglich,  
 nach Theres, das Sie  
 mit Route nachmittags  
 Sonnabend um halb  
 vier Uhr besuch zu  
 od. morgen Freitag  
 früh um 7 Uhr  
 Algenbock

28 Juni  
 1934.

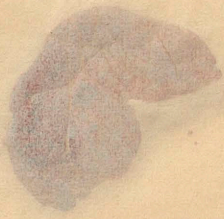


Wrote a letter to you  
on the 10th of the  
11th but it was  
lost. I am sorry  
to hear that you  
are not well.  
I hope you will  
soon be better.  
Yours truly  
Alfred

22  
1891



150



Handwritten text in Chinese characters, likely a signature or a note, located in the bottom left corner. The characters are written in a cursive style.



cito



L. W. M.  
H. W. M.  
Wichman