

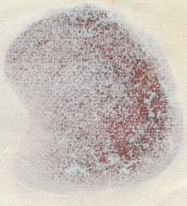
[Faint, illegible handwritten text, possibly bleed-through from the reverse side of the page.]

[Faint handwritten text at the bottom right corner, possibly a signature or date.]

青島

青島

青島



青島
FIRST / HIGH
POST / OFFICE
青島

青島



Postfach
POTSDAM
EIS. K. V. HOF
12 10

Einladung, 4 Bll.
gehört in Befrag

17/11/1872

2 R.

Berlin
Quarantänenstr.
12-1-54