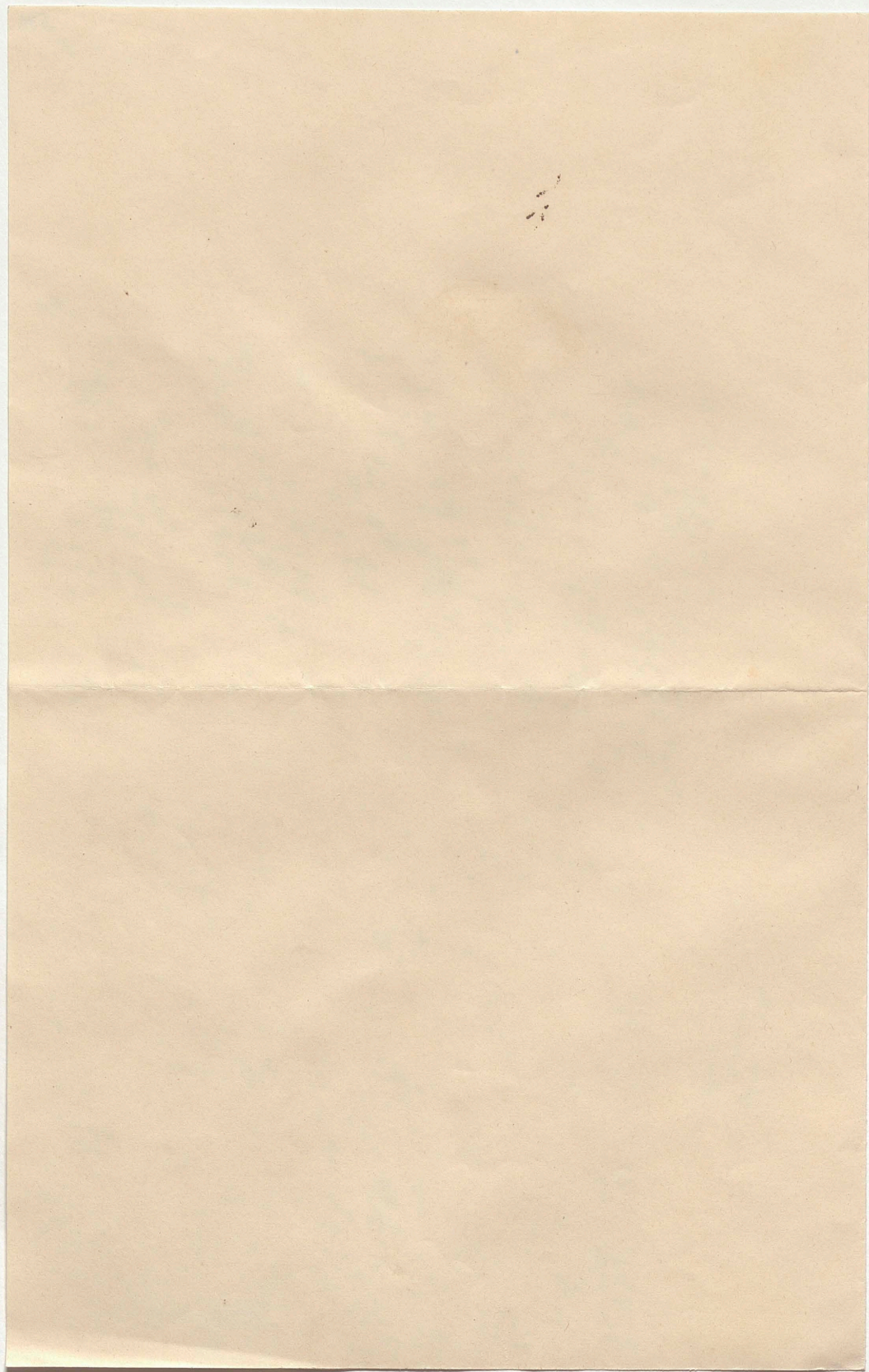


Faint handwritten text at the top of the page.

Main body of the document containing dense, illegible handwritten text.

27 Nov 1848



L. Wobbe

Herr Professor Buschmann

in

Berlin

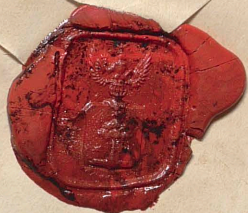
Oswinuburgstr. Nr.

n. 67

im Gartenhof

W. G. von Humboldt

Hilfsarbeiten



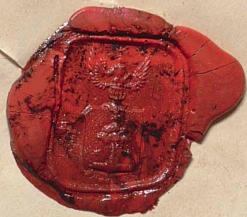
Oct 29 Nov 1848

572

L. Wollst
Herr Professor Buschmann

~~Herrn~~

Berlin
Oswinuburgstr. Nr.
n. 67
im Hause
W. S. A. von Humboldt



Oct 3. 27 Nov 1848