

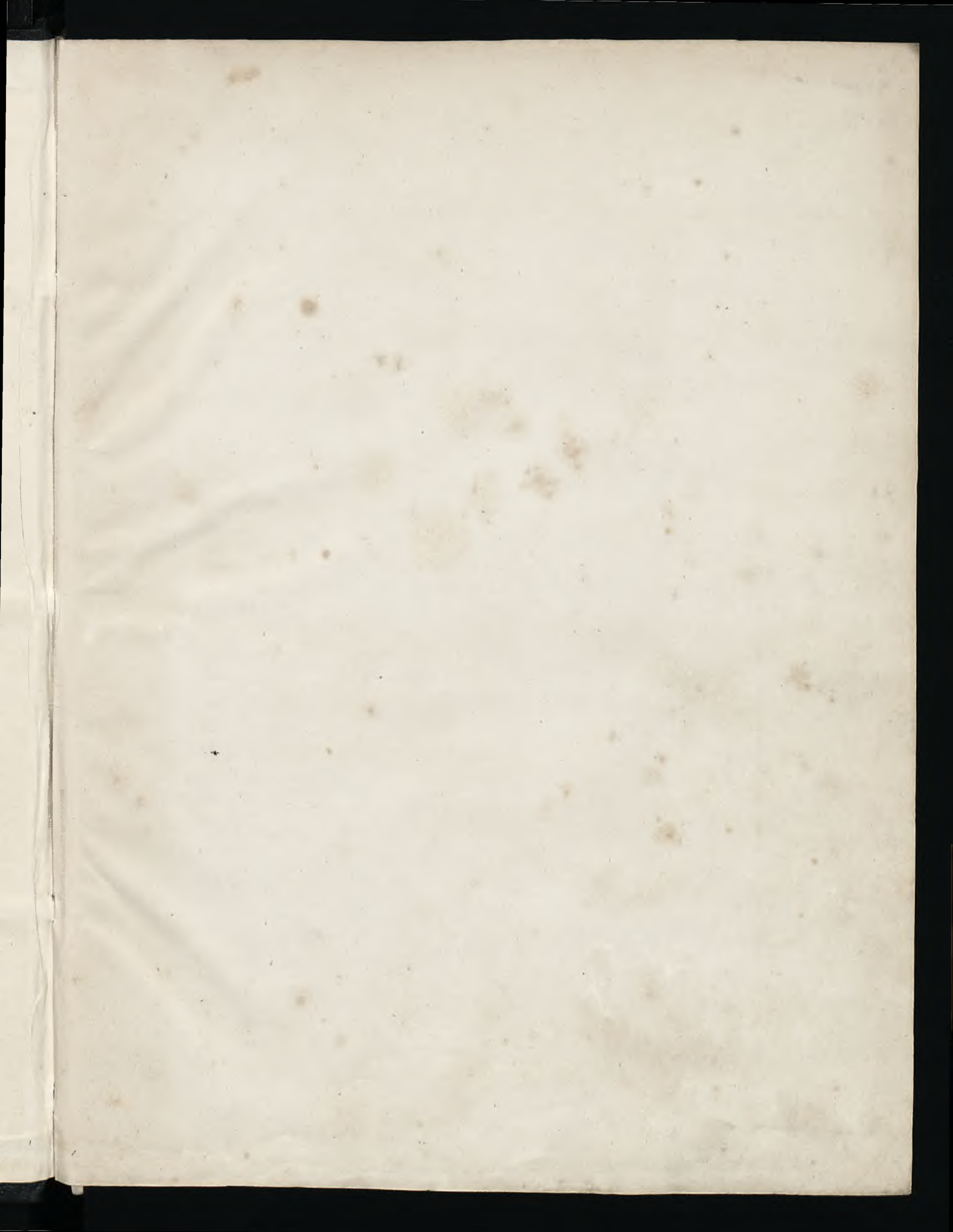
Mendelssohn
Aut. 41

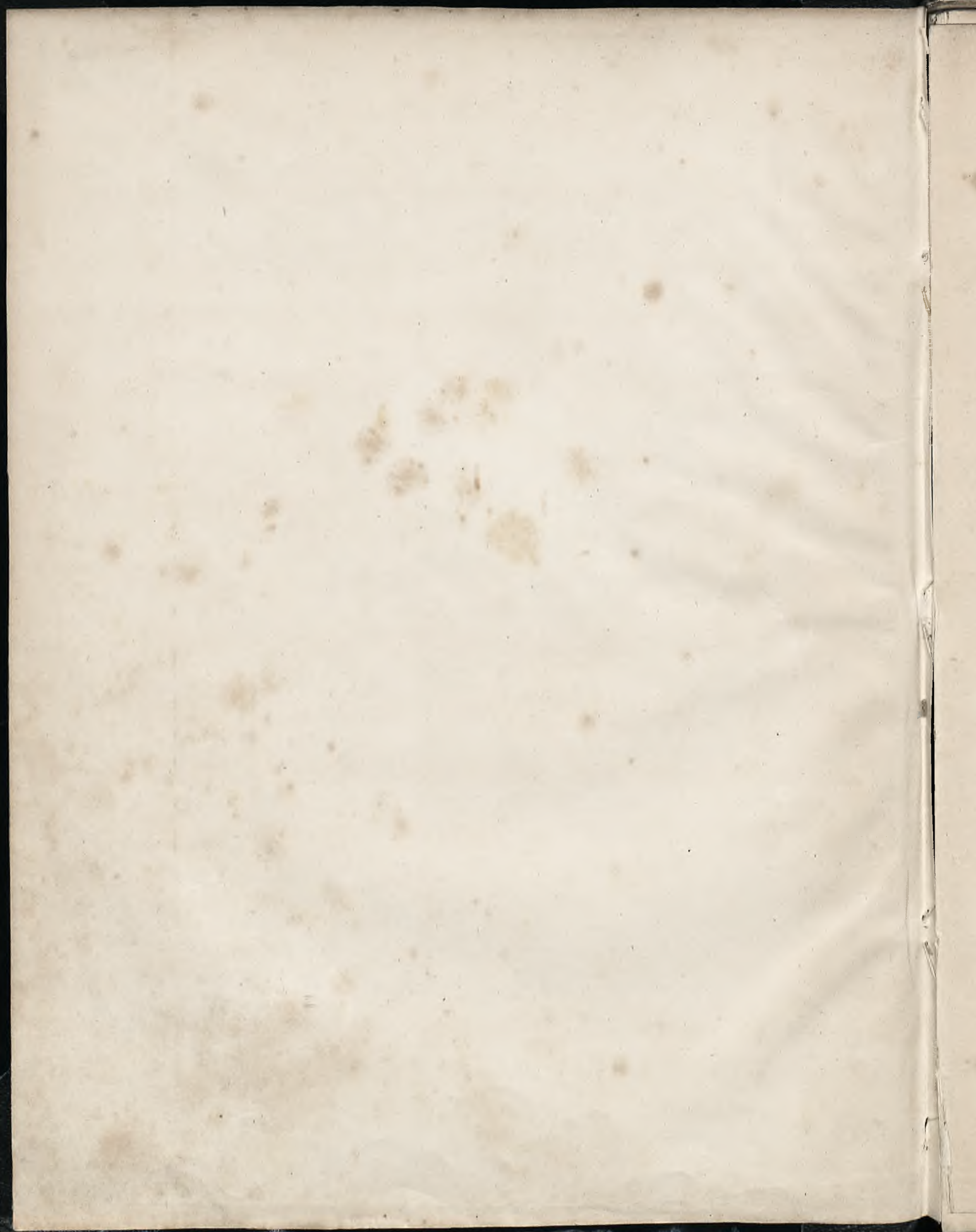
Lauda Sion für Jer in. Orgel
Audi Kunstler für Männerstimmen d. Hof. Instrument.
die deutsche Liturgie
Orgel für die Deutsche Kirche in Berlin
Orgel für die reformirte Kirche in Frankfurt
Jer sub Elias
Sings sub Am Lauda Sion
Liedabland für die Deutschen in Lyon

46 Mendelssohn
Nachl. Bd. 41

17, 240

c





a - bus sub di versis specie bus signis tan ^{his signis} ~~tantum~~ tantum et non a ~~non~~
 Sub di versis specie bus signis tantum signis tan tum signis tantum et non a - bus
 e - bus sub di versis specie bus signis tantum signis tantum et non a - bus
 bus sig - - nifican tum
 Sub di - versis specie bus signis tantum et non a - bus
 - *Daphn. J. V.*

bus sub di versis specie - - bus
 et non rebus latent res erimi ac latent res latent res erimi
 versis specie - bus latent re - - erimiae latent res erimi
 et rebus sub di versis specie - bus latent res erimi ac bus sub di versis speci
 f.

sis speciebus latent res eximiae latent res eximiae latent res eximiae
 ae Subdiversis speciebus di versis speciebus di versis speciebus
 subdiversis speciebus subdiversis speciebus subdiversis speciebus
 ebus latent res eximiae subdiversis speciebus
 ebus latent res eximiae subdiversis speciebus

versis speciebus subdiversis speciebus signis tantum signis tantum
 tantum signis tantum rebus subdiversis speciebus signis rebus
 signis tantum rebus subdiversis speciebus
 signis tantum rebus subdiversis speciebus
 signis tantum rebus subdiversis speciebus

etc. col
 Romano
 del Coro

Tempo Alto Collato *Tempo col Dim.*
Tempo col Dim.

Violini
Viola

Segue subito

Tempo
f
Tempo

Fortsetzung s. P. 46

Doppel Bandel. Kl.

Fragment of text from the adjacent page, including a vertical line of characters and a small graphic element.

