

# Ecce Sacerdos Magnus

Ad recipiendum processionaliter Episcopum.  
( Na uraczyste przyjęcie Biskupa ).

ad  
quatuor voces  
inaequales  
cum Organo

auctore

# M. SURZYŃSKI.

OP. 25.

=====  
*Cena partytury 1 K 20 h.  
Głosy po 15 h — 60 h.*

Sumptibus  
Zygmunt Jeleń  
Tarnoviae.

15017

III

Mus.



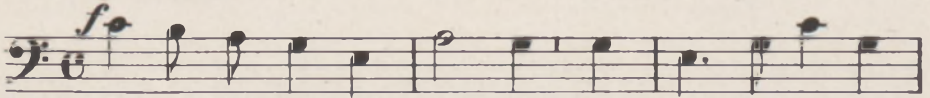
ACC. no: 215.../1981

B.

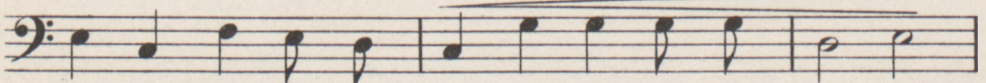
# Ecce sacerdos magnus.

Moderato.

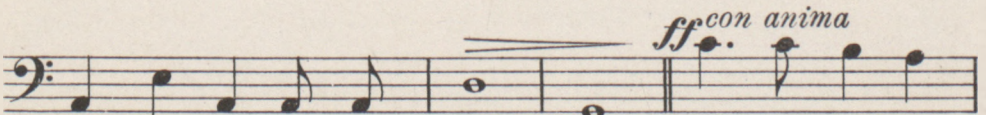
M. Surzyński, Op. 25.



Ec-ce sa-cer-dos mag-nus, qui in di-é-bus



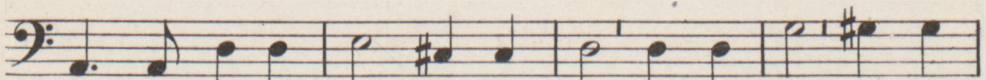
su-is plá-cu-it De-o, pla-cu-it De-o



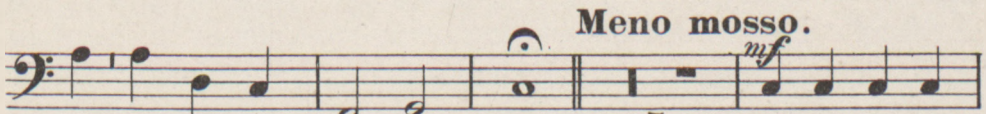
et in ven-tus est ju-stus. I-de-o ju-



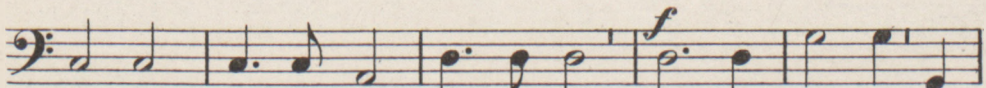
re ju-rán-do fe-cit il-lum Dó-mi-nus, fe-cit



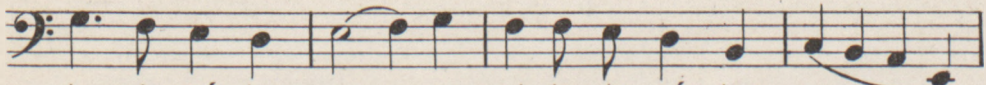
il-lum Dó-mi-nus crés-ce-re crés-ce-re crés-ce-



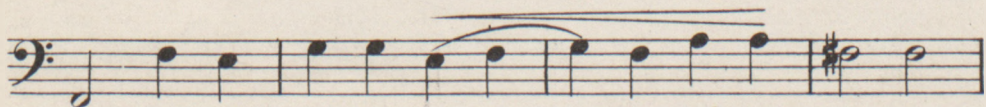
re in ple-bem su-am. 5 Be-ne-di-cti-



ó-nem ó-mni-um gén-ti-um de-dit il-li et,



te-sta-mén-tum su-um et te-sta-mén-tum su-



um con-fir-má-vit, con-fir-má-vit su-per.



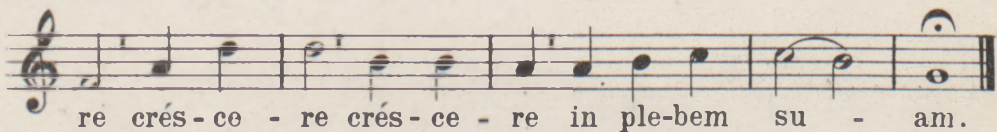
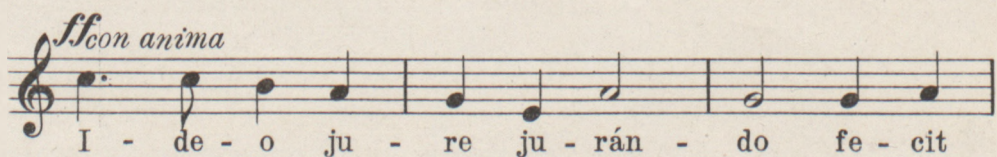
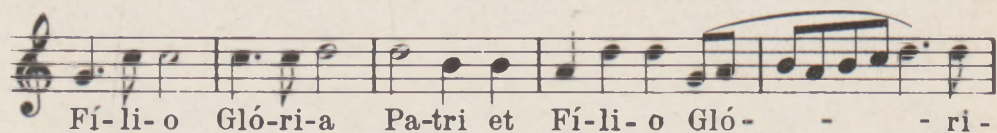
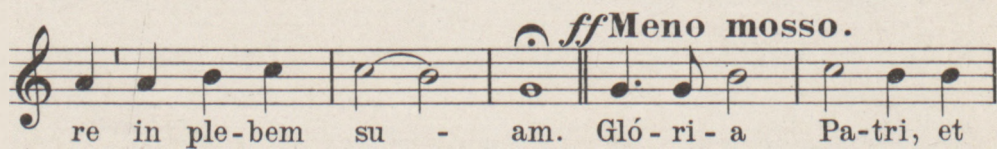
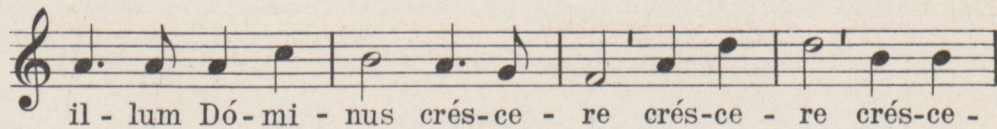
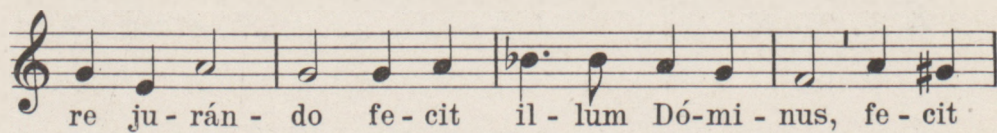
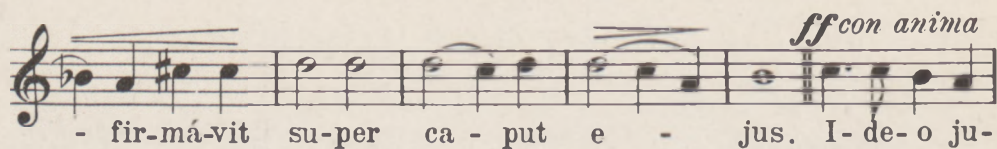
## Ecce sacerdos magnus.

Moderato.

M. Surzyński, Op. 25.

Ec-ce sa-cer-dos mag-nus, qui in di-é-bus  
 su-is plá-cu-it De-o, pla-cu-it De-o  
 et in ven-tus est ju - stus. *ff con anima* I - de - o ju -  
 re ju-rán - do fe - cit il - lum Dó-mi - nus, fe - cit  
 il - lum Dó-mi - nus crés - ce - re crés - ce - re crés - ce -  
*Meno mosso.*  
*p dolce* re in ple-bem su - am. Be - ne - di - cti - ó - nem  
*mf* ó - mni - um gén - ti - um de - dit il - li Be - ne - di - cti -  
*f* ó - nem ó - mni - um gén - ti - um de - dit il - li et  
 te - sta - mén - tum su - - - um con - fir - má - vit, con -

## Tenor.



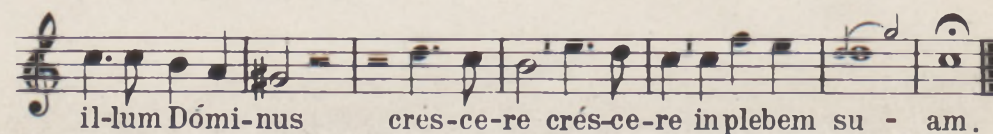
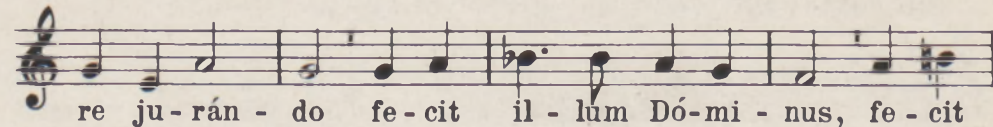
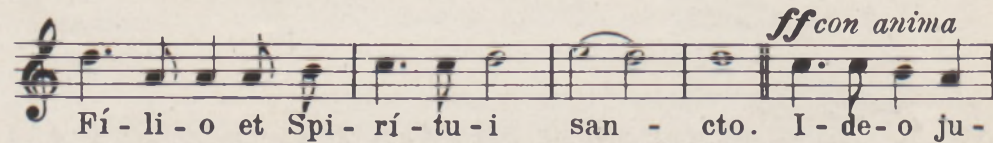
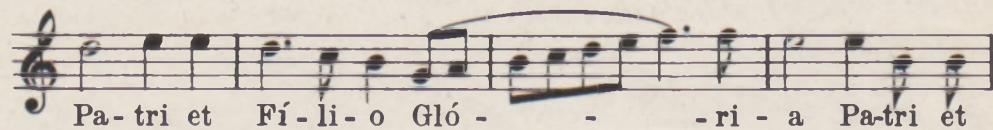
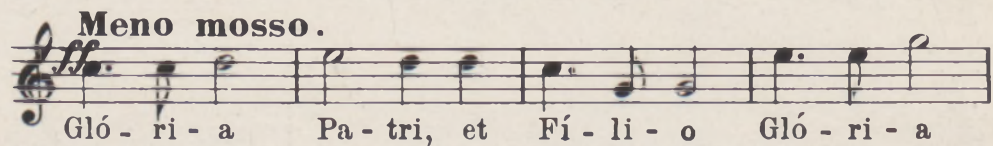
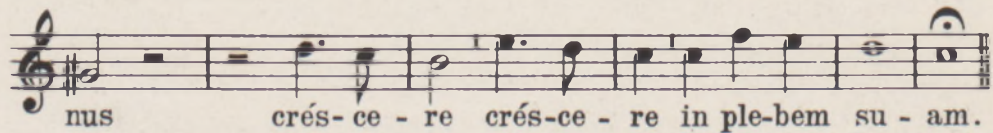
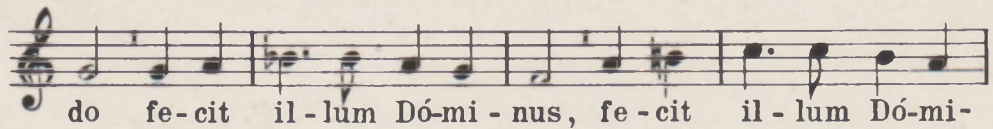
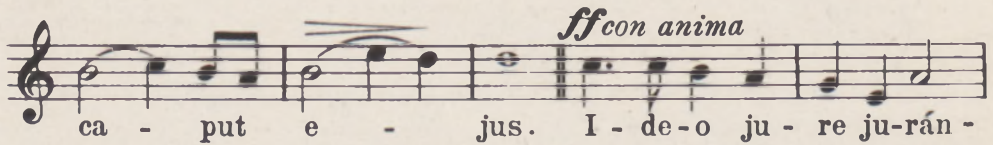
# Ecce sacerdos magnus.

M. Surzyński, Op. 25.

**Moderato.**

Ec - ce sa - cer - dos mag - nus, qui in di - é - bus  
 su - is plá - cu - it De - o, pla - cu - it De - o  
 et in ven - tus est ju - stus. *ff con anima* I - de - o ju -  
 re ju - rán - do fe - cit il - lum Dó - mi - nus, fe - cit  
 il - lum Dó - mi - nus crés - ce - re crés - ce -  
*Meno mosso.*  
*p dolce* re in ple - bem su - am. Be - ne - di - cti - ó - nem  
 ó - mni - um gén - ti - um de - dit il - li  
*mf* Be - ne - di - cti - ó - nem ó - mni - um gén - ti - um de - dit  
 il - li, et te - sta - mén - tum

## Soprano.





# Ecce sacerdos magnus.

M. Surzyński, Op. 25.

**Moderato.**

Ec - ce sa - cer - dos mag - nus, qui in di - é - bus  
 su - is plá - cu - it De - o, pla - cu - it De - o  
 et in ven - tus est ju - stus. *ff con anima* I - de - o ju -  
 re ju - rán - do fe - cit il - lum Dó - mi - nus, fe - cit  
 il - lum Dó - mi - nus crés - ce - re crés - ce - re crés - ce -  
*Meno mosso.*  
*pdolce* re in ple - bem su - am. Be - ne - di - cti - ó - nem  
 ó - mni - um gén - ti - um de - dit il - li,  
*mf* Be - ne - di - cti - ó - nem ó - mni - um gén - ti - um de - dit  
 il - li, et te - stamén - tum su - um et te - sta - mén - tum



# Ecce sacerdos magnus

ad quatuor voces inaequales cum Organo.

M. Surzyński, Op. 25.

Moderato.

Sopran.  
Alt.

Tenor.  
Basso.

ORGANO.

*f*

Ec-ce sa-cer-dos mag-nus, qui in di-é-bus su-is plá-cu-it

De-o, pla-cu-it De-o et in ven-tus est ju-stus.



*ff con anima*

I - de - o ju - re ju - rán - do fe - cit il - lum Dó - mi - nus, fe - cit

*ff*

*ff con anima*

*ff*

il - lum Dó - mi - nus crés - ce - re crés - ce - re crés - ce - re in ple - bem su - am.

*Fine.*

*Fine.*

*Meno mosso.*

*p dolce*

Be - ne - di - cti - ó - nem ó - mni - um gén - ti - um de - dit

*p*

*Meno mosso.*

*P (espressivo)*

*P (espressivo)*

*mf* il - li, Be - ne - di - cti - ó - nem ó - mni - um gén - ti - um de - dit *f*

il - li, et te - sta - mén - tum su - um et te - sta - mén - tum et

il - li et te - sta - mén - tum su - um et te - sta - mén - tum

te - sta - mén - tum su - um

et te - sta - mén - tum su - um con - fir - má - vit, con - fir - má - vit

su - um

su - um

su - per ea - put e - - - jus.

*Rep: Ideo dal § al Fine.*

*ff* *Meno mosso.*

Glo - ri - a Pa - tri, et Fi - li - o

*ff*

*Meno mosso.*

*ff*

*Ced.*

Gló - ri - a

Gló - ri - a Pa - tri et Fí - li - o Gló - ri - a

Gló - ri - a

<sup>a</sup>  
Gló - ri - a

<sup>a</sup> Pa - tri et Fí - li - o et Spi - rí - tu - i san - cto.

Gló - ri - a

*Rep: Ideo dal § al Fine.*

