



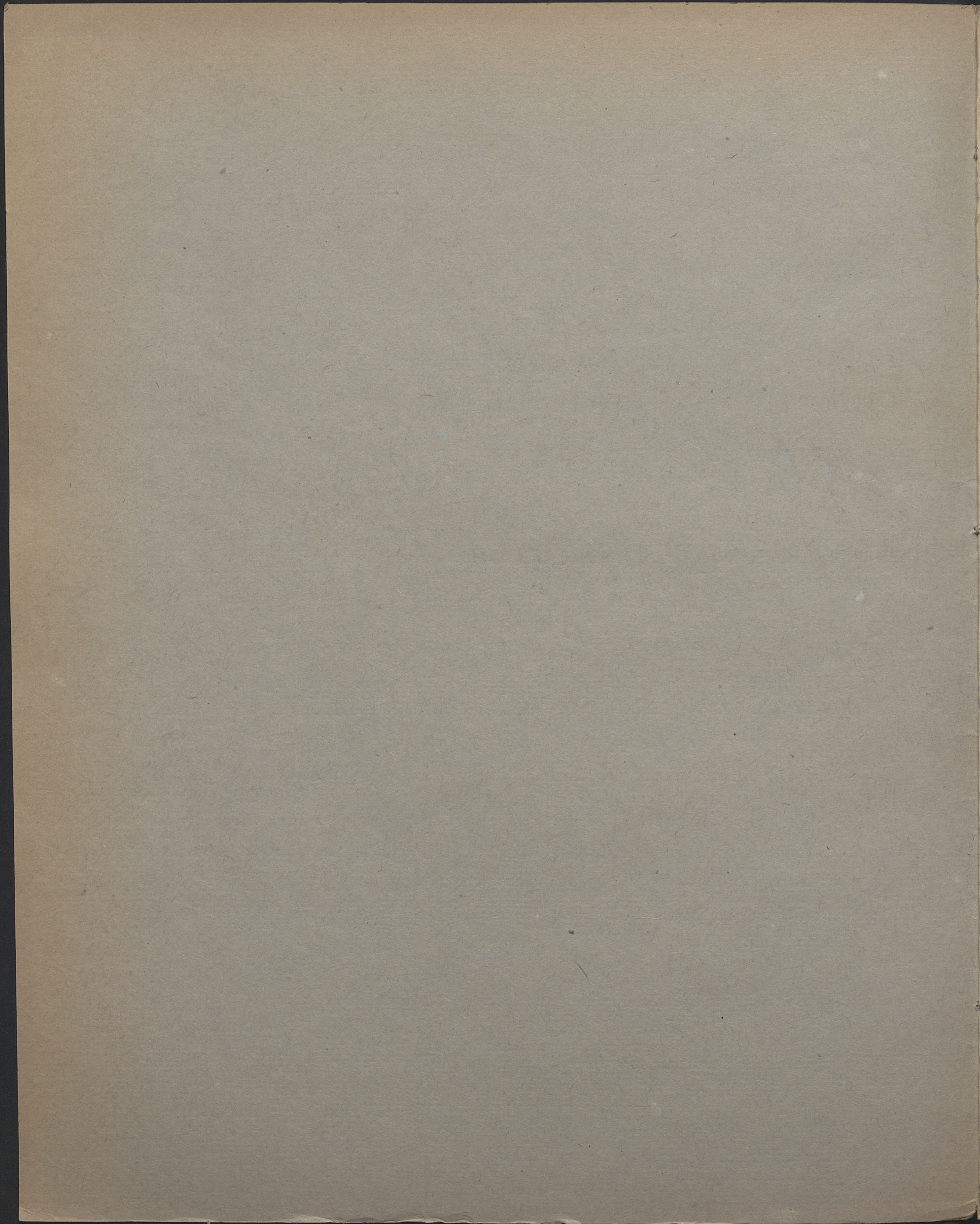
4243

BIBLIOTHECA  
UNIVERSITATIS  
CRACOVENSIS



musicalia









  
4243  
MUSICALIA 

FRAU ELVIRA MÜLLER-BERGHAUS  
Kammersängerin J.M. der Königin Olga von Württemberg.



Die  
Sirenixe  
LIED  
für  
eine Sopran-oder Tenor-Stimme  
mit Klavierbegleitung  
Text von Hofrath Prof. Dr. C. Beyer  
Musik  
von  
ST. CHOMENTOWSKI.

Op. 11.

Pr. M 1. ...

Eigenthum des Verlegers.

Stuttgart, Eduard Ebner.

E. E. 526.

Lith. Anst. v. C. G. Röder, Leipzig.



4243

III Mms.



D 1951 m 184



# Die Seenixe.

Allegretto.

St. Chomentowski, Op. 11.

The piano introduction is in 6/8 time, marked *mf legato*. It features a flowing melody in the right hand and a supporting bass line in the left hand. The piece begins with a series of eighth notes in the right hand, moving from a higher register down to a lower register. A *rit* (ritardando) marking is placed over the final two measures, which then transition to *a tempo* for the final two measures. The introduction concludes with a double bar line and a repeat sign.

The first system of the vocal score includes the vocal line and piano accompaniment. The vocal line begins with the lyrics "Wie lan - ge willst Du schwei - - gen, Du". The piano accompaniment continues with a steady eighth-note pattern in the right hand and a bass line in the left hand. The system ends with a double bar line and a repeat sign.

The second system of the vocal score includes the vocal line and piano accompaniment. The vocal line continues with the lyrics "mei - - ne Was - ser - fee, Du mei - ne Was - ser - fee, wie". The piano accompaniment maintains the eighth-note accompaniment. The system ends with a double bar line and a repeat sign.

The third system of the vocal score includes the vocal line and piano accompaniment. The vocal line concludes with the lyrics "lan - ge soll ich tra - - gen, mein un - aussprech - lich' Weh, wie". The piano accompaniment continues with the eighth-note accompaniment. The system ends with a double bar line and a repeat sign.



Bibl. Jaq.

lan - ge soll ich tra - - - gen, mein un - aus sprech - lich'

*rit.*

Ad. \* Ad. \* Ad. \*

*a tempo* *p*  
Weh, ich seh - ne mich hi - nun - ter zu Dir, in grü - ne

Ad. \* Ad. \* Ad. \*

Fluth, — dass dei - ne Lie - be küh - le die na - men - lo - se Gluth, — dass

Ad. \* Ad. \* Ad. \* Ad. \* Ad. \*

*rit.* *a tempo*  
dei - ne Lie - be küh - - - le die na - men - lo - se Gluth.

*a tempo*  
*dim.* *rit.* *p*

Ad. \* Ad. \*



*mf* *cantando*

Nimm mich in dei - ne Ar - me du sü - sses Frau - en - bild, wie lä - cheln dei - ne

*mf*

Ad. \* Ad. \* Ad. \* Ad. \* Ad. \* Ad. \* Ad. \* Ad. \*

Au - gen, wie ist der Tod so mild, — wie lä - cheln dei - ne Au - gen, wie

Ad. Ad. \* Ad. \* Ad. \*

*affettuoso*

ist der Tod so mild. Nimm mich in dei - ne Ar - me, du sü - sses Frau - en -

*affettuoso*

Ad. \* Ad. \* Ad. \* Ad. \* Ad. \*

bild — wie lä - cheln dei - ne Au - - gen, wie ist der Tod so

*rit.*

*rit.*

Ad. \* Ad. \* Ad. Ad. Ad. \* Ad. \*



*a tempo*  
 mild.  
*a tempo*  
*rit.*  
*a tempo*  
*p*  
 Led. \*

*mf*  
 Wie lan - ge willst du schwei - - gen, du  
 Led. \* Led. \* Led. \*

mei - - - ne Was - ser - fee, du mei - - ne  
 Led. \* Led. \* Led. \*

Was - ser - fee, wie lan - ge soll ich tra - - gen mein  
*crescendo*  
 Led. \* Led. \* Led. \*



un - - aus - sprech - lich' Weh, \_\_\_\_\_

Ad. \*

rit. a tempo

mein un - aus - sprech - lich' Weh? \_\_\_\_\_

a tempo

rit.

Ad. \* Ad. \* Ad. \* Ad. \*

Ad. \* Ad. \* Ad. \*

Ad. \* Ad. \* Ad. \* Ad. \* Ad. \*







