

Register

zum siebenten Jahrgange

1846.

A.

- Acidalia** alpestrata 31, Byssin-
nata 31, Pallidaria 30, scabra-
ria 31.
- Acinopus** bucephalus, mega-
cephalus 101.
- Actina** atra 262, chalybea 287,
clavipes 222, sexdentata 262,
vallata 222.
- Acupalpus** rufulus 107.
- Ætrophorus** 388.
- Agonum** bifoveolatum 104,
clandestinum 104, ericeti 104,
parumpunctatum 105, sex-
punctatum 104.
- Agrotis** Carnica, egregia, gla-
cialis 236.
- Aleochara** ruficornis 300.
- Allantus** abdominalis, pu-
sillus 290.
- Amara** atrocoerulea, brevicor-
nis, communis, familiaris,
ferrea, levis, montivaga, obso-
leta, pratensis, vagabunda 106.
- Anchomenus** longiventris 104.
- Anthophagus** alpestris, alpi-
nus, armiger, austriacus, forti-
cornis, melanocephalus, oma-
linus, palustris, scutellaris,
spectabilis, sudeticus, testaceus
21 — 24.

- Anthophila** Cretula, Glarea,
Phlomidis 31, communima-
cula 375.
- Aphis** cerastii 171, glandulosa
170, ononidis 173, setosa 172.
- Aphodius** arenarius, ater, con-
flagratus, conspurcatus, eleva-
tus, lutarius, obscurus, qua-
drituberculatus, rufescens, ru-
fus, sericatus, scybalarius
48 — 50.
- Apion** difficile 185, fuscirostre
185, genistae 186, marchicum
189, melanopus 185, ulicis 185.
- Araocerus** coffeae 190.
- Ascalaphus** meridionalis 200.
- Asclera** cyanca 294.
- Asindulum** 18.
- Atomaria** linearis 195.
- #### B.
- Bembidium** aerosum, albipes,
bellum, brunnipes, chloropha-
num, crenatum, decorum, gilvi-
pes, humerale, luridum, Man-
nerheimii, obsoletum, prasi-
num, pulchrum, pumilio,
rufescens, ruficorne, rufipes,
splendidum, stomoides, testa-
ceum, venustulum 107 — 108.
- Beris** chalybeata 262, clavipes
223, 259, dorsalis 306, dubia

286, femoralis 288, flavipes 262, flavofemorata 288, fuscipes 282, hirsuta 287, nigra 282, nigripes 287, 303, nigritarsis 222, nitens 219, 287, 301, obscura 262, pallipes 284, rufipalpis 306, Servillei 306, sexdentata 261, similis 303, spinigera 306, tibialis 304, tricolor 305, vallata 222, viridis 305.

Bostrichus Saxesenii 24.

Botys Parietialis 243, *Sambucatis* 243, *Stachydalis* 242.

Bruchus affinis, analis, ater, canus, cisti, debilis, flavimanus, granarius, immaculatus, lathyri, loti, luteicornis, pectinicornis, pisi, rufimanus, scutellaris, seminarius, theobromatis, tibellus, viciae, villosus 41—47.

Bryaxis haemoptera 355, *sulcicollis* 353.

Bythinus Chadoiri, crassicornis, distinctus, longipalpis, securiger, unicornis 354—355.

C.

Carabus affinis 256, *Anderschii* 110, *Andzejscii* 251, 255, 257, *angustatus* 100, *alpestris* 100, *assimilis* 99, *austriacus* 100, 256, *azurescens* 100, *azureus* 249, 251, 256, *candisatus* 100, 251, 256, *catenulatus* 100, 254, 256, *coeruleus* 100, *concolor* 350, *consitus* 99, 256, *crenatus* 255, *cyanesens* 256, *exasperatus* 100, 249, 253, 257, *fastuosus* 256, *fulgens* 255, *gagates* 111, *Germari* 100, 249, 252, 256, *glabrellus* 250, 255, *granulatus* 99, *Harcyniae* 256, *helveticus* 255, *Hoppii* 100, *Kronii* 99, 256, *Linnéi* 101, *lucidus* 110, *monilis* 99, 256, *morbillosus* 256, *oblongus* 99, 256, *obsoletus* 100, *purpurascens* 100, 249, 254, 257; *purpuratus* 100,

255, *regularis* 256, *rubens* 111, *Scheidleri* 100, 255, *simplex* 110, *strenuus* 111, *subcoeruleus* 104, *sylvestris* 100, 350, *Ullrichii* 256, *verbasci* 107, *violaceus* 100, 248, 255, *Wolfii* 250, 255,

Callidium angustatum 111.

Cassida azurea 362, *depressa* 362, *Hablitzliae* 364, *hemisphaerica* 361, *lucida* 359, 362, *margaritacea* 363, *murraea* 26, *nigra* 362, *nebulosa* 397, *nobilis* 363, 400, *rubiginosa* 362, 396, *sanguinosa* 361, 391, *seraphina* 364, *splendidula* 363, *subreticulata* 363, *testudo* 364, *thoracica* 360, *vibex* 399, *viridula* 363, *vittata* 361.

Catops coracinus 177, *longulus* 176, *rotundicollis* 176, *subfuscus* 177.

Cecidomyia flava, *tricolor* 206.

Chalcide Leucopsis 199.

Chlaenius laetus, *quadricolor* 104.

Cidaria Apicistrigaria, *Aptaria*, *Arcticaria*, *Collinaria*, *Promoeuraria* 238—241.

Cicindela campestris, *funebri*, *integra*, *nigrita*, *obscurata* 109.

Corynoneura minuta, *scutellata* 13.

Crioceris asparagi, *brunnea*, *campestris*, *distincta*, *dodecastigma*, *duodecimpunctata*, *merdigera*, *14punctata*, *5punctata*, *rufipes*, *Suffriani* 155—158.

Cryptophagus plicatus 358.

Curculio alliariae, *atramentarius*, *carbonarius*, *cerasi*, *pruni*, *ruficornis*, *stygius*, *violaceus* 187—190.

Cymindis angularis, *homøgrica*, *lunaris* 108.

D.

Demetrius 387.

Ditomyia trifasciata 15.

Donacia aenea 86, affinis 80, 82, armata 87, Besseri 83, comari 84, discolor 57, fenica 54, festucae 86, hydrocharidis 55, linearis 51, Malinowskii 54, menyanthidis 51, micans 84, 87, moerens 53, nigra 56, nymphaeae 86, pallipes 80, 82, planicollis 80, 82, proteus 87, rustica 80, 81, semicuprea 53, sericea 84, simplex 51, 53, tomentosa 56, typhae 52, variabilis 57, violacea 86.

Dolichus vigilans 104.

Doritis Apollo 381, Mnemosyne 383.

Dromius 390, corticalis 108, glabratus 108, maurus 108, plagiatus 108, quadrillum 25.

Dyticus crux 318, depressus 321, lineatus 319, semipunctatus 322.

E.

Elaaphrus austriacus, cupreus, pictus, prasinus, smaragdinus, testaceus, Ullrichii 107 — 111.

Elophilus pendulus 125.

Emphytus bucculentus, tibialis 79.

Emydia candida 151, chrysocephala 150, colon 151, coscinia 150.

Eriocampa crassicornis 113, fausta 115, nitida 113.

Eristalis frutetorum 147.

Eupithecia spissilineata 241.

Euplectus bicolor, fennicus, glabriculus 358, gracilis, Kunzei, lativentris, Märkelii, nigricans, sulcicollis 353.

Euplocamus boleti, chora-

gellus, mediellus, morellus, tessulatellus 178 — 182.

Eutheia truncatella 358.

F.

Feronia erudita 103, 111, Honoratii 102, maura 102, Mühlfeldi 103, negligens 103, parumpunctata 102, pulla 104, 111, strenua 104, 111, striatocollis 102, striato-punctata 104.

G.

Gastropacha rubi 383.

Gryllotalpa vulgaris 27.

Gyrinus aeneus, bicolor, caspius, celox, colymbus, distinctus, libanus, marginatus, marinus, mergus, minutus, nator, nitens, opacus, striatus, strigipennis, strigosus, urinator 211 — 218.

H.

Hadena adusta 237, 384, baltica 385, Satura 237.

Haemonia equiseti 90, Gyllenhallii, zosteræ 91.

Harpalus azureus, flavicornis, fulvipes, hospes, laevicollis, laevistriatus, lentus, limbatus, montanus, obscuricornis, picipennis, pumilus, rubripes, ruppicola, satyrus, sabulosus, semiviolaceus (110,) servus, Sturmii, subcordatus, tardus 101, 102.

Harpactor annulatus 200.

Harpiphorus lepidus 79.

Helodes campestris 160.

Helophilus arcticus 116, 119, borealis 116, 117, 123, camporum 168, frutetorum 116, 117, 123, glacialis 117, 121, graenlandicus 117, 119, hybridus 118, 141, lineatus 118,

167, lunulatus 118, 165, pendulus 118, 135, peregrinus 117, 118, tristifugus 118, 164, trivittatus 118, 141, 142, versicolor 118, xanthopygus 149.

Heteropeza pygmaea 14.

Hipparchia Euryale 383.

Hoplonotus laminatus 246, 300.

Hydroporus alpinus, borealis, Davisii 358, **crux, depressus, elegans, elongatulus, fasciatus, Gyllenhalii, halensis, hamulatus, lineatus, melanocephalus, neglectus, nigrita, obscurus, piceus, pubescens, pygmaeus, tristis** 317 — 322, **septentrionalis** 359.

Hylesinus minor, piniperda 24.

Hylotoma abdominalis 290.

H.

Ismene Helios 207.

I.

Kaliosysphinga Dohrnii 80.

K.

Lachnus grossus 174.

Larentia spissilineata 241.

Larinus carlinae 190.

Lema asparagi, bicruciat, campestris, cyanella, Erichsonii, flavipes, maculipes, melanopa, paracanthesis, rugicollis 154 — 158.

Leptopus hypogastricus 289.

Lionychus 389, **quadrillum** 25.

Lithosia Arideola 233.

Lixus paraplecticus, productus 190.

Macrorrhyncha flava 17.

Macrostyli latipes 20.

Magdalis asphaltina, aterrima, atramentaria, barbicornis, carbonaria, cerasi, frontalis, phlegmatica, pruni, stygia 186 — 190.

Meloë proscarabaeus 294.

Metallites ambiguus, marginatus 216.

Matabletus 390.

Molops arrogans, brevis, Cottelii, melas 102.

Monotoma quadrifoveolata 195.

Musca clavipes 260, **frutetorum** 147, **pendula** 125, **transfuga** 164, **vallata** 222.

Mycetochares barbata 294.

N.

Nebria Dahlii, Gyllenhalii, nivalis 351.

Nematus beridiventris 289, **coeruleocarpus** 76, **flavicornis** 77, **hypogastricus** 289, **leucapsis** 77, **leucopodius** 76, **minutus** 76, **rufipes** 77, **variabilis** 78.

Nemoicus oblongus 310.

Noctua boleti 180, **praecox** 326, **valligera** 326.

Noterus sparsus 322.

Notiophilus aquaticus, palustris 351.

O.

Oestrus Trompe 29.

Ophiusa Pastinum 234.

Ortalis albipennis 93, **cini-fera** 92.

Oxystoma fuscirostris 185, **genistae** 186, **ulicis** 185.

P.
Panus barbicornis 189.

Papilio Anteros, Arcanoides,
Eros, Everos, Tithonus 366,
367.

Phloeobius griseus 190.

Phyllobius aeruginosus, al-
bidus, alneti, amaurus, an-
gustatus, angustior, argenta-
tus, caesius, calcaratus, cnides,
femoralis, flavidus, maculi-
cornis, mali, minutus, nigri-
pes, oblongus, obscurior, par-
vulus, pomonae, pyri, rufescens,
testaceus, uniformis, vesper-
tinus, viridicollis 307 -- 311.

Phycis mediella 180.

Platysma brunnea, coeruleo-
virens, conformis, diligen-
s, Güntheri, Heyeri, interstincta,
latibula, longicollis, madida,
nigerrima, nigriceps, ochracea,
ovoidea, solers 103, 104.

Polydrosus amaurus, argen-
tatus, cervinus, chrysomela,
confluens, flavipes, fulvicornis,
melanotus, micans, perplexus,
planifrons, pterygomalis, pul-
chellus, pyri, rufipes, selenius,
sericeus, speciosus, splendi-
dus, squamosus, undatus 312
— 316.

Polysphincta carbonator 292.

Pselaphus brevicornis 354.

Psyche calunella 227, Stetinen-
sis 227.

Pterostichus Hagenbachii,
morio 102, obtusus 103, Pre-
vostii 102, pygmaeus 104, 111,
Selmanni 102, strenuus 104,
111.

R.

Rhingia lineata, muscaria 167.

Rhinobatus planus 190.

Rhinodes cerasi 189, pruni
190.

Rhynchaenus atratus 187,
carbonarius 188, Rhina 189,
violaceus 187.

S.

Sapromyza tenera 366.

Scarabaeus elevatus 51.

Scardia mediella 181.

Sclandria pusilla 290.

Scydmaenus collaris, exilis,
fimetarius, minimus, minutus,
nanus, parallelus, pumilio,
propinquus, Sahlbergii, trun-
catellus, tuberculatus, vicinus,
355 — 358.

Sericoris Sudetana.

Stenolophus dorsalis [106,
scaritides 110.

Stratiomys chalybeata 262,
clavipes 260, nigra 260, sex-
dentata 262, similis 287, val-
lata 222.

Syrphus femoralis 147, frute-
torum 147, lineatus 167,
pendulus 125, versicolor 147.

T.

Tabanus groenlandicus 119.

Tentredo pusilla 290.

Tetragoneura distincta, hirta
19.

Thymalus limbatus 294.

Tinea anomalella 291, chlora-
gella 179, magnella 152, me-
diella 179.

Tortrix Gouana, magnana 152,
Sudetana 386.

Trechus alpicola 106, alpinus
106, littoralis 111, longicornis

111, micros 111, parvulus
 106, platypterus 107, pul-
 chellus 107, rotundipennis
 106, verbasci 107.
Trichonyx 323, sulcicollis,
 Maerkelii 353,
Trichosoma Loewii, parasita,
 Pierreti 5, 6,
Trimium brevipenne, caucasi-
 cum 354.
Trogosita caraboides, colla-
 ris, nigripennis 104.
Stenolephus dorsalis 106,
 scutellus 110.
Stenolephus chalybeatus 282,
 clavipes 280, nigrus 281, ser-
 dentatus 282, similis 287, val-
 lata 282.
Styphus femoralis 147, fulvi-
 torum 147, lineatus 167,
 pendulus 145, vesicifer 147.
Tabanus groenlandicus 119,
 testaceo-pusillus 280.
Tetragonura distans, rufus
Thymalus humilis 284.
Tinea anomala 201, chlora-
 cella 178, maculata 152, me-
 diella 179.
Tortrix Gonaux magnana 152,
 subulana 288.
Trochus alpicola 106, alpinus
 106, bicoloris 111, longicornis

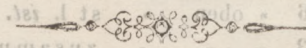
Trypeta centaureae, cognata,
 Meigenii 295, toxoneura 364.
X.
Xylophagus nitens 287, rufi-
 palpis 306, spiniger 306.
Z.
Zeugophora scutellaris 152,
 subspinosa 153.
Zygena Heringi, Minos 235.
Phycis medialis 180.
Platyna brunnica, coarctata-
 vitrea, coniformis, diligens,
 Güntheri, Heyeri, intermixta,
 latibasis, longicollis, munda,
 nigricornis, nigricipes, ochracea,
 ovoidea, solars 103-104.
Polydorus amarus, argen-
 tatus, carinus, chrysomela,
 concolor, flavipes, fulvicornis,
 maculatus, nigrans, perplexus,
 planifrons, pterigomalis, pul-
 chellus, piri, rufipes, scintillus,
 sericeus, spectans, splendi-
 dus, spinuosus, undatus 312-
 316.
Polysphincta carbonator 292,
 Pselaphus brevicornis 254.
Psyche calanella 227, Steinen-
 sis 227.
Pterostichus Hagenbachii,
 morio 102, opimus 103, pro-
 vestiti 102, pygmaeus 104, 111,
 Schmanni 102, strenuus 104.
 111.
Rhizophagus planus 180.
Rhugia lineata, muscaria 167.

Druckfehler.

Seite	52	Zeile	13	von unten	statt:	Art l. <i>Naht</i> .
"	57	"	19	" oben	"	zuerst l. <i>zeigt</i> .
"	81	"	24	" "	"	ganz l. <i>gar</i> .
"	87	"	11	" unten	"	verbleiben l. <i>ver-</i> <i>blieben</i> .
"	88	"	4	" "	"	dunkelbraunen l. <i>dunkelblauen</i> .
"	109	"	28	" oben	"	Ulrichii l. <i>Ullrichii</i> .
"	153	"	6	" unten	"	über l. <i>unter</i> .
"	156	"	3	" oben	"	mögen l. <i>möge</i> .
"	"	"	20	" "	"	allgemein l. <i>unge-</i> <i>mein</i> .
"	157	"	7	" "	"	wahrnahm l. <i>wahr-</i> <i>nehme</i> .
"	210	"	9	" unten	"	wesentlich l. <i>merklich</i> .
"	211	"	22	" oben	"	können l. <i>könne</i> .
"	216	"	7	" unten	"	an l. <i>er</i> .
"	228	"	6	" "	"	esca l. <i>vesca</i> .
"	233	"	18 u. 15 v.	" unten	"	Syntrichia l. <i>syn-</i> <i>trechia</i> .
"	248	"	16	" oben	"	st l. <i>ist</i> .
"	"	"	23	" "	"	zusammenstellen l. <i>zusammenfallen</i> .
"	249	"	11	" unten	"	geschnitzt l. <i>ge-</i> <i>schweift</i> .
"	250	"	10	" oben	"	Hinterrande l. <i>Hin-</i> <i>terende</i> .
"	"	"	7	" unten	"	am l. <i>von</i> .
"	251	"	12	" "	"	frei l. <i>fein</i> .

NB. Die 5 letzten Zeilen von Seite 251 gehören an das Ende von Seite 252.

- Seite 252 Zeile 6 von oben statt: andern l. *innern*.
- » 252 » 7 » unten » starke l. *stark*.
- » 253 » 12 » oben » derselben l. *darstellen*.
- » » » 15 » » reinen l. *innern*.
- » » » 17 » » Keillinien l. *Kiel-
linien*.
- » » » 12 » unten » crinolatol. *crenulato*.
- » 254 » 20 » oben » 2te l. 4te
- » » » 1 » unten » obern l. *abnorm*.
- » 259 » 8 » oben » vielfältigen l. *viel-
gestaltigen*.
- » 271 » 11 » » Trichopteryx Marsh.
l. *Mots*.
- » 320 » 24 streiche die Worte: *nicht bloss*.
- » 360 » 10 von oben statt: dauert l. *dauerte*.
- » » » 12 » unten » an l. *in*.
- » » » 1 » » beide l. *leider*.
- » 361 » 1 » oben » dieselben l. *dieselbe*.
- » » » » » » eine l. *keine*.



Nr. Die 2 letzten Zeilen von Seite 251 gehören an das
 Ende von Seite 252.

Сорупоненга.

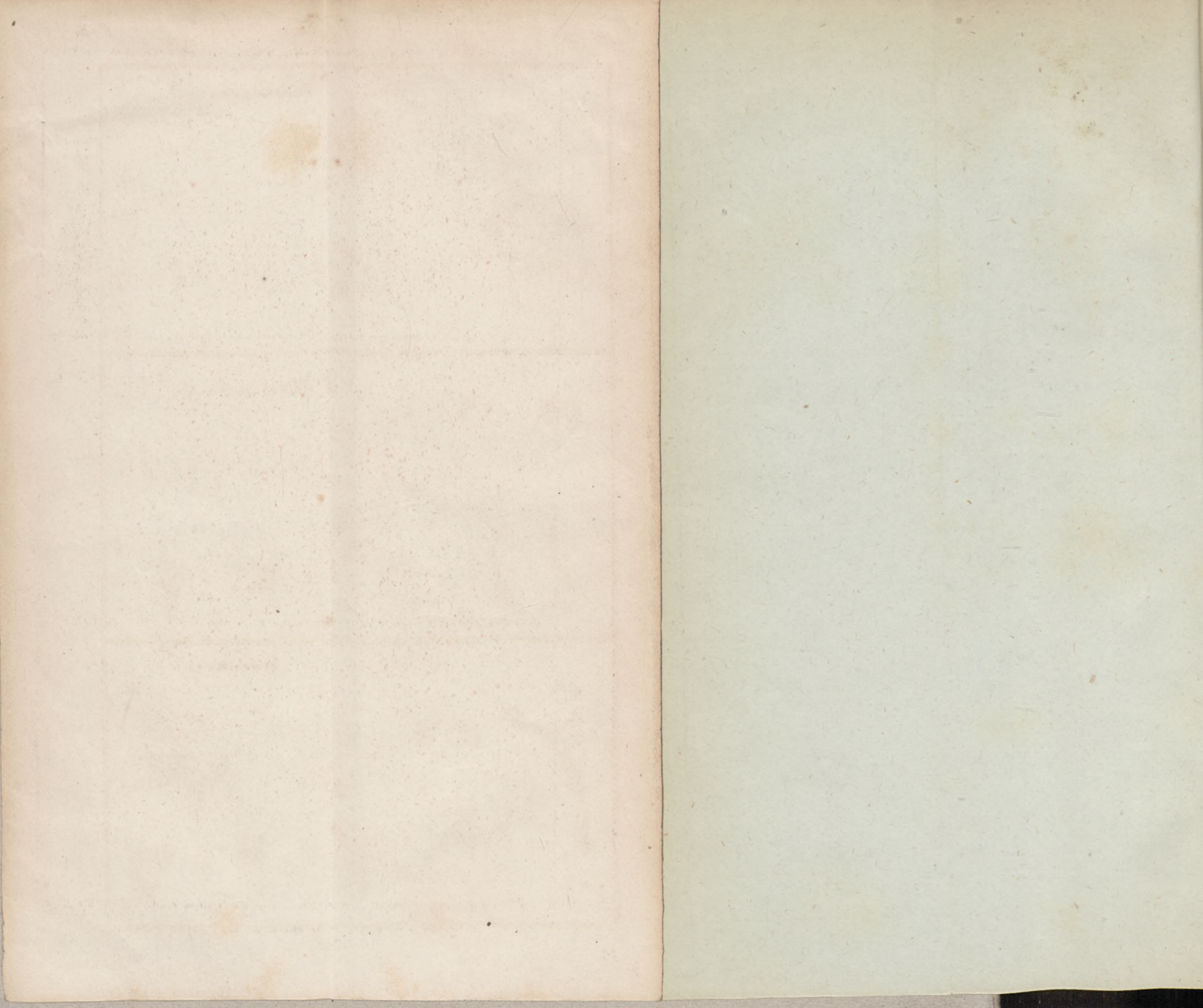


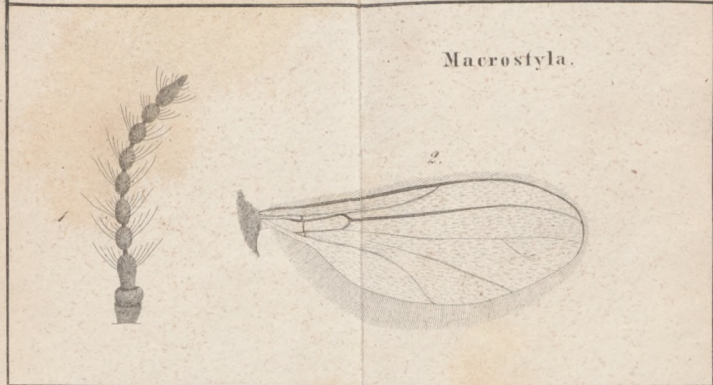
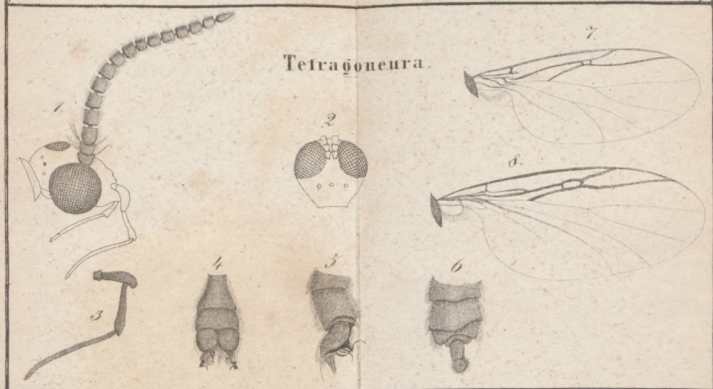
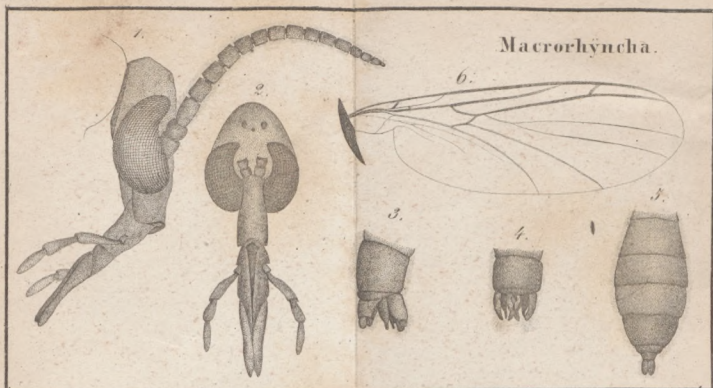
Heteropeza.

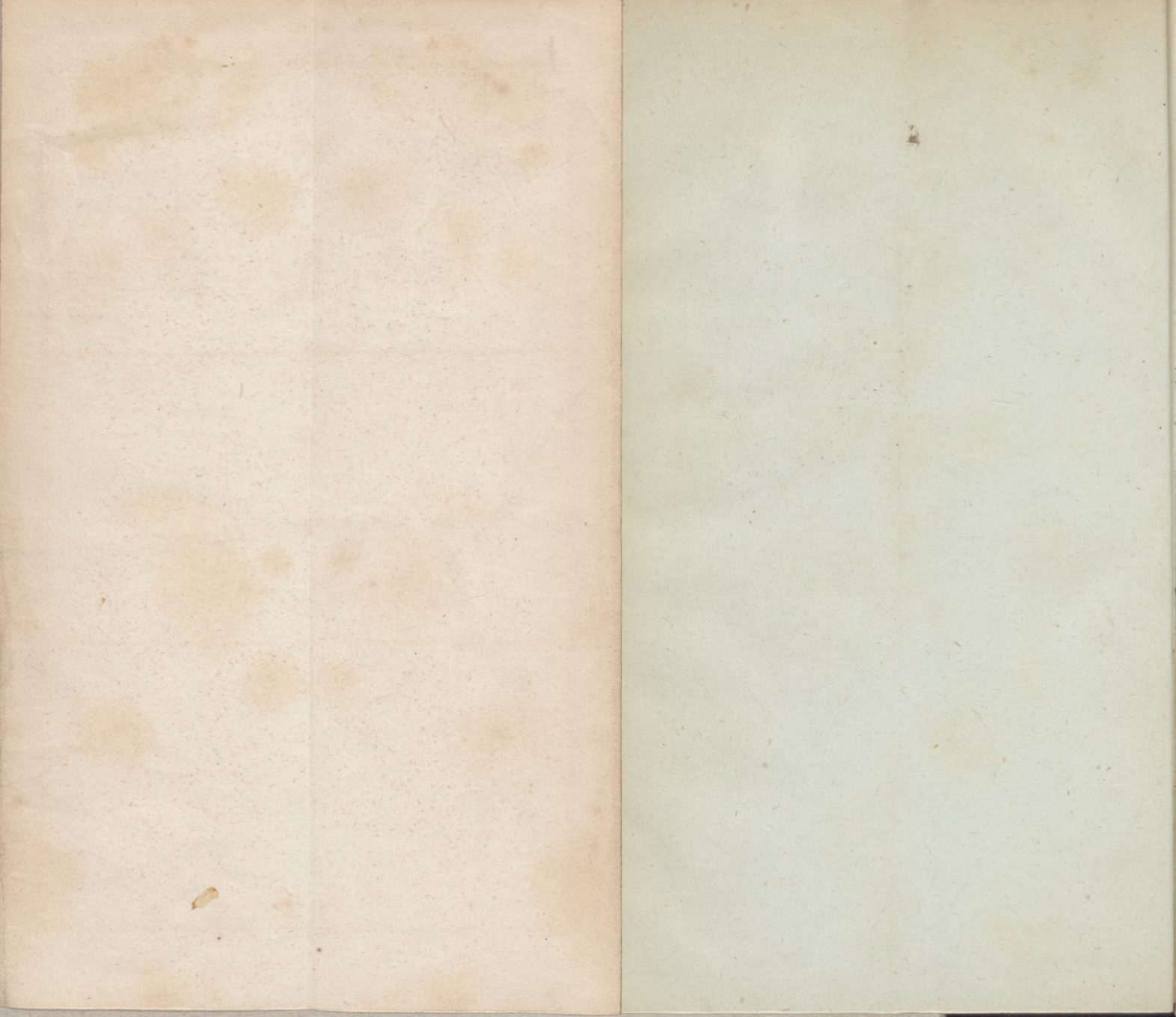


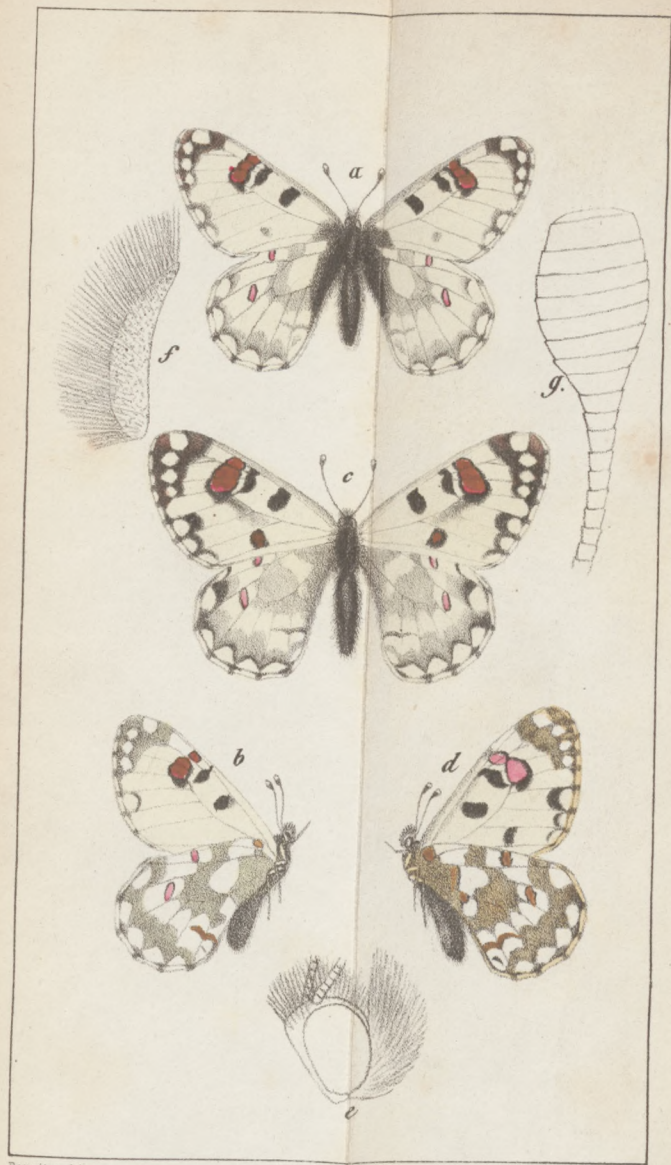
Ditomyia.











Dormitzer del.

Ismene Helios N.

