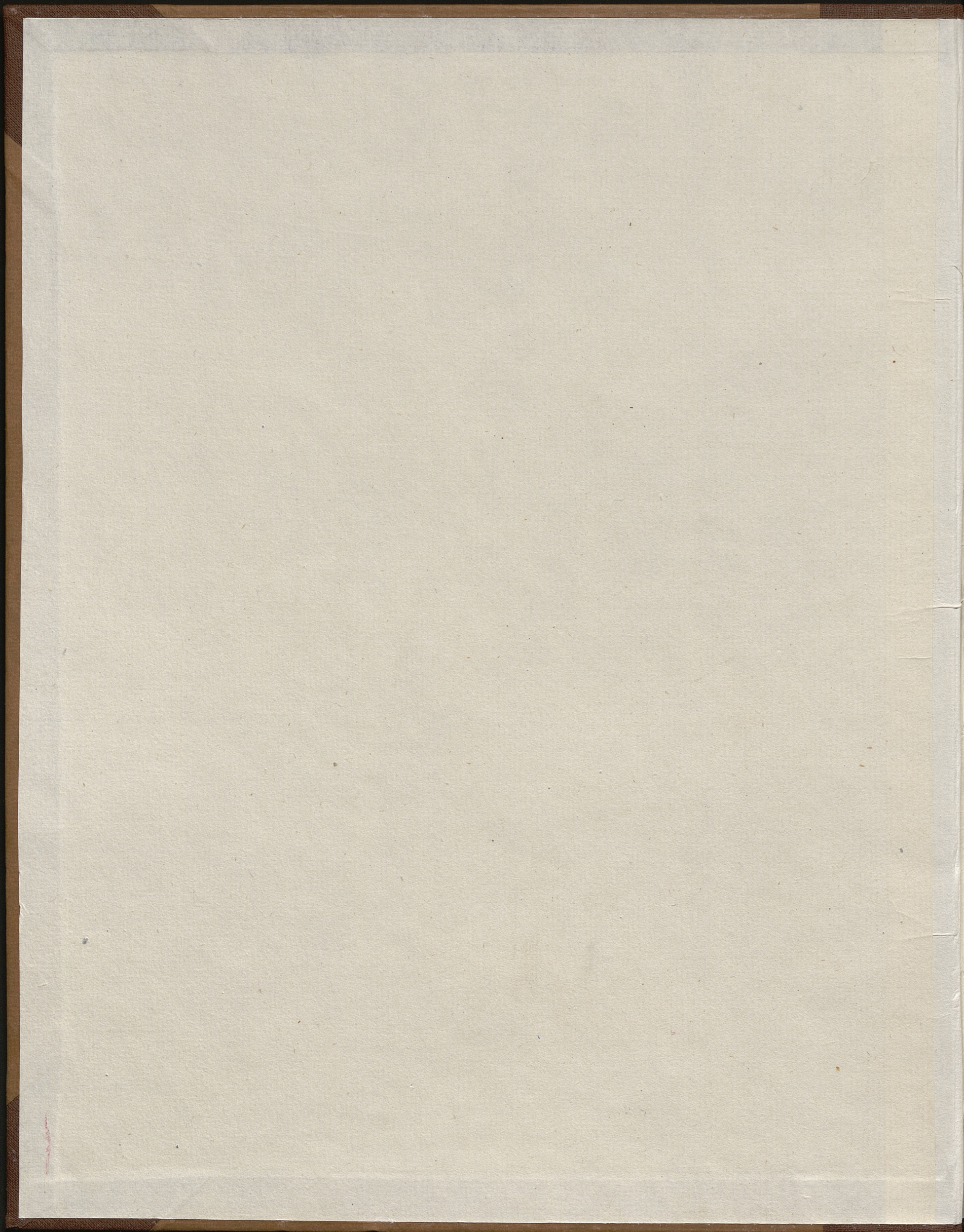


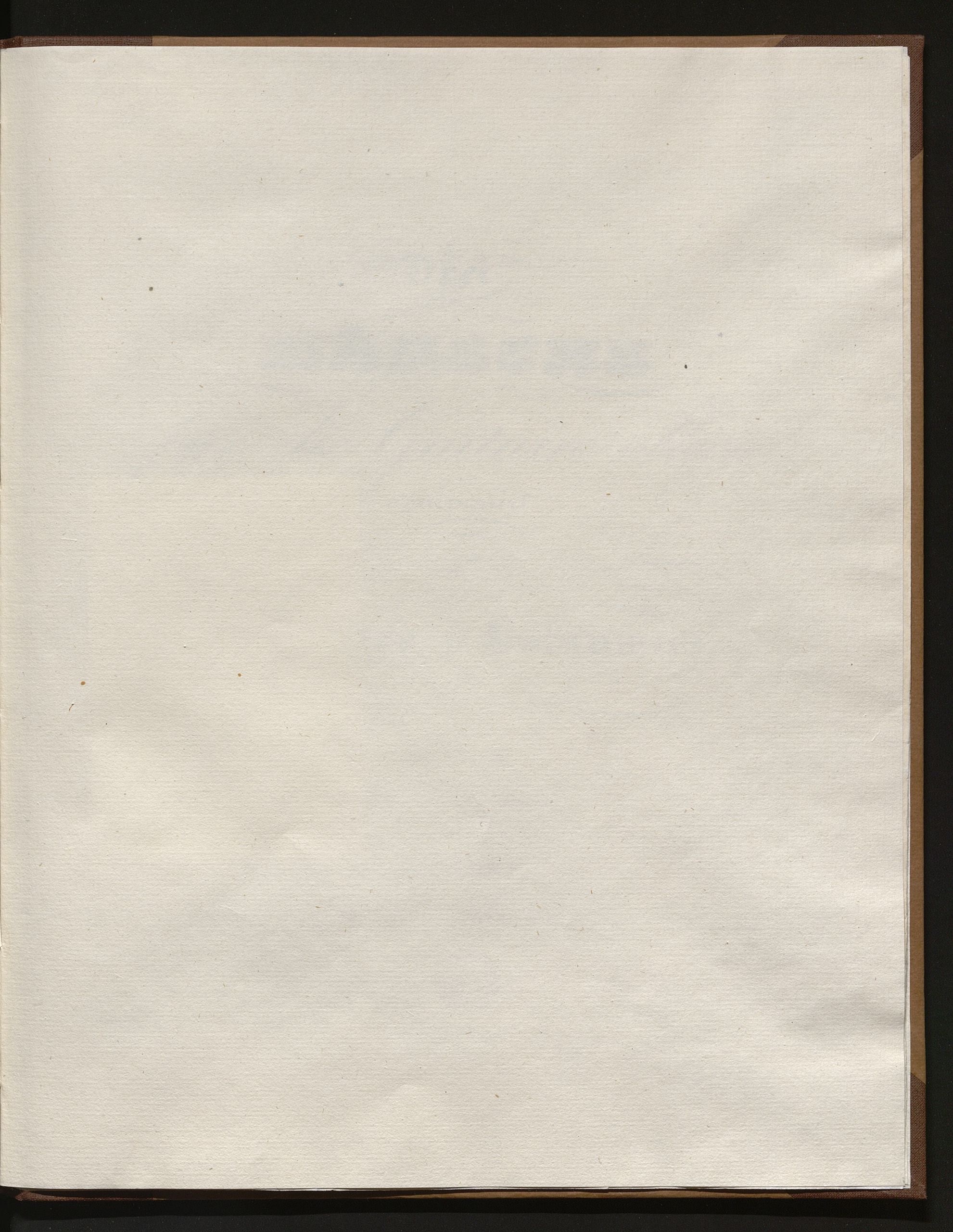


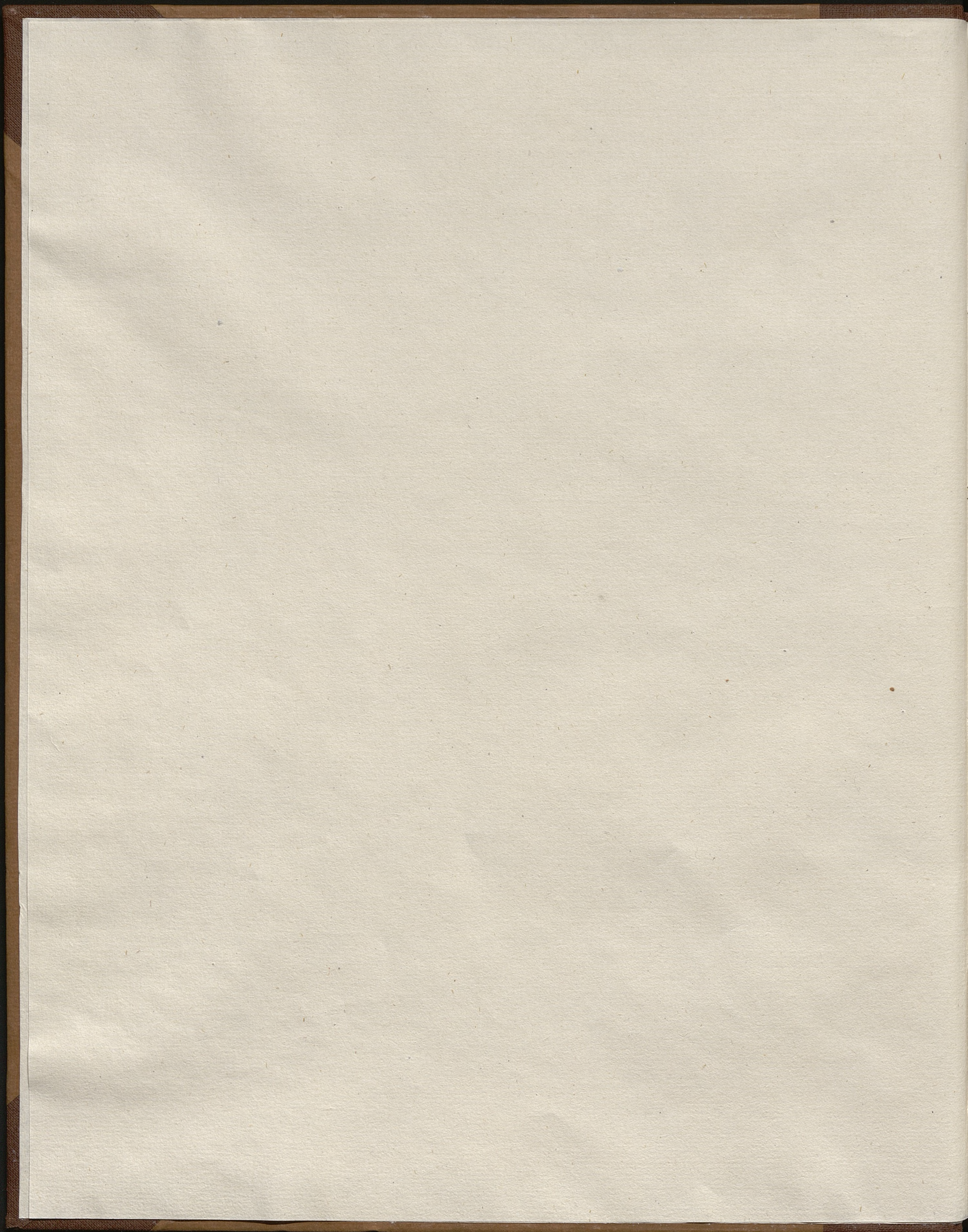
8132

musicalia









Drei

MÄRSCHEN

für die Guitarre allein  
compouirt

von

Joh. Nep. v. Bobrowicz.

25. Werk.

N<sup>o</sup> 54.

*Eigenthum des Verlegers.  
Eingetragen in das Vereinsarchiv.*

Pr. 4 Gr.

DRESDEN,

bei G. Thieme.



FR. BRÜSHAVER  
Gr. Lichterfelde.

8132

J.N.v. Bobrowicz 25<sup>es</sup> Werk.

III MW

MARSCH  
Nº 1.

Musical score for the first part of the march, consisting of five staves of music in treble clef with a key signature of two sharps and a common time signature. The music features various dynamics including *p*, *sf*, and *f*, and includes triplet markings.

Fine.

Segue Trio.

TRIO.

Musical score for the Trio section, consisting of four staves of music in treble clef with a key signature of two sharps and a common time signature. The music features dynamics such as *p*, *f*, and *sf*.

Marsch da Capo al Fine.

D 1954 m 78



MARSCH  
Nº 2.

Musical score for the first section of the march, featuring five staves of music in treble clef with a key signature of two sharps and common time. The music includes various dynamics such as *f*, *ff*, and *sf*, and articulation marks like accents and slurs. The section concludes with first and second endings, marked "1<sup>mo</sup>" and "2<sup>do</sup>", and ends with "Fine." and "Segue Trio."

TRIO.

Musical score for the Trio section, featuring four staves of music in treble clef with a key signature of two sharps and common time. The music includes dynamics like *p*, *sf*, and *ff*. The section concludes with first and second endings, marked "1<sup>mo</sup>" and "2<sup>do</sup>", and includes the lyrics "cre - - scen - - do." followed by "ff".

Marsch da Capo.

MARSCH  
Nº 3.

Musical score for the first section of "Marsch Nº 3". It consists of a melody line in the upper staff and an accompaniment line in the lower staff. The key signature has two sharps (F# and C#) and the time signature is 2/4. The music begins with a *f* (forte) dynamic marking. The melody features a series of eighth notes and quarter notes. The accompaniment consists of a steady eighth-note bass line. Dynamic markings include *f*, *pf* (pianissimo), and *f*. There are also some triplets in the melody. The section concludes with a *Fine.* marking.

TRIO.

Musical score for the "TRIO" section of "Marsch Nº 3". It continues with the same melody and accompaniment. The key signature remains two sharps and the time signature is 2/4. The section begins with a *p* (piano) dynamic marking. The melody features several triplet markings. The accompaniment continues with eighth notes. Dynamic markings include *f*, *p*, and *mf*. A *Segue Trio.* instruction is present near the end of the section. The section concludes with a *Marsch da Capo.* instruction.

Marsch da Capo.







