



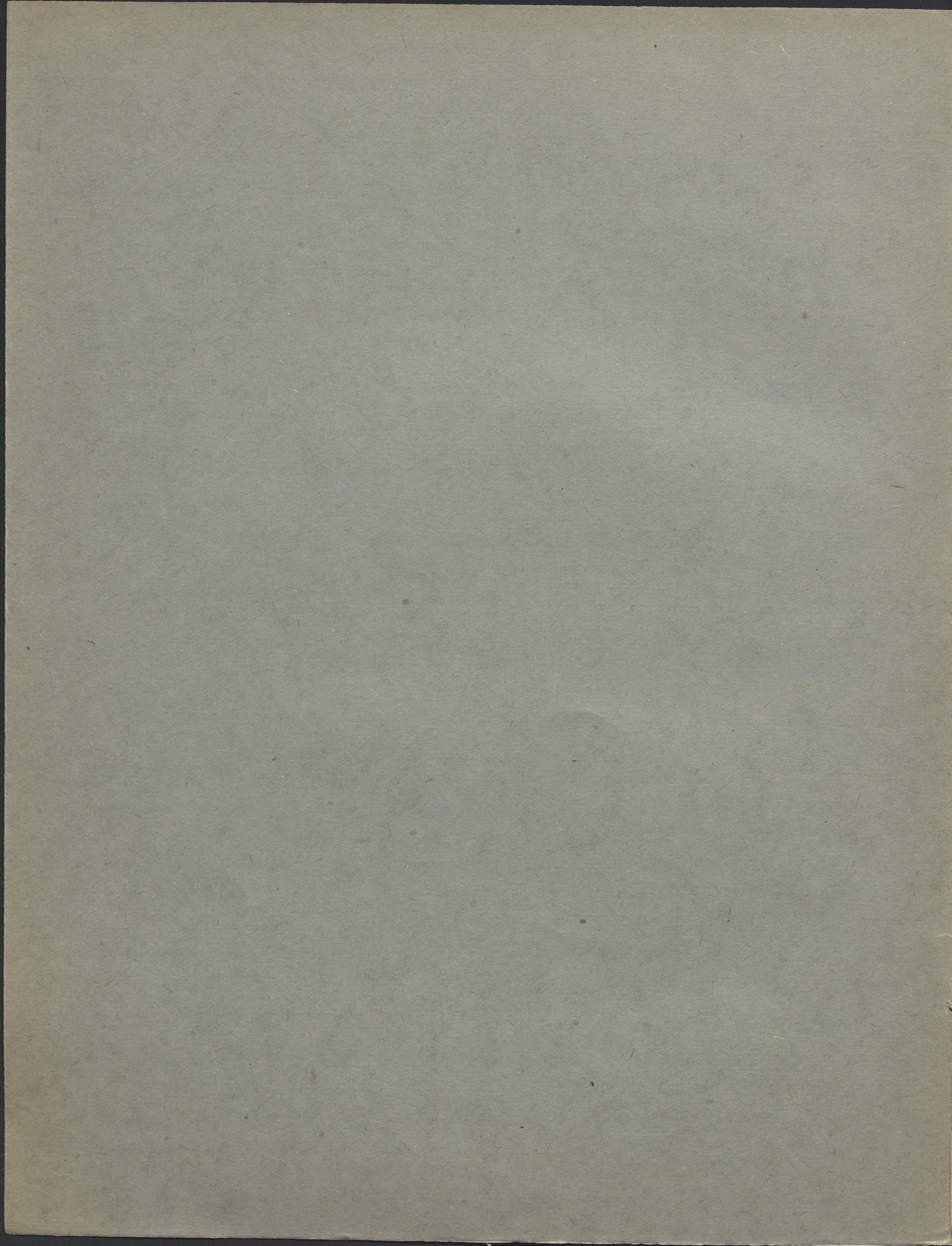
780

1

MUSICALIA



13



À Monsieur Adolphe Heuselet.

Le Soir, La Nuit et Le Matin

Romance, Ballade et Chanson.

TROIS

Études caractéristiques

POUR PIANO

par

EMANUEL KANIA.

Op. 6.

VARSOVIE

Pr. 1. Thr. 7 1/2 Ngr.
1 R. 12 1/2 Kop.

chez Gustave Sennewald.

Rue Miodowa N° 481.

N° 1.
Pr. $\left\{ \begin{array}{l} 10 \text{ Ngr.} \\ 30 \text{ hóp.} \end{array} \right.$

N° 2.
Pr. $\left\{ \begin{array}{l} 12 \frac{1}{2} \text{ Ngr.} \\ 37 \frac{1}{2} \text{ hóp.} \end{array} \right.$

N° 3.
Pr. $\left\{ \begin{array}{l} 15 \text{ Ngr.} \\ 45 \text{ hóp.} \end{array} \right.$



780

11 1

LE SOIR.

(ROMANCE.)

Andante e tranquillo assai.

Emanuel Kania, Op. 6.

Piano.

f

rit.

sfz *p* *à piacere sosten.*

poco animato quasi recitando

rit.

marcato *ten.* *marcato* *ten.*

stringendo poco a poco

marc.

Ped. *

This system contains the first two staves of music. The upper staff features a melodic line with slurs and accents, while the lower staff provides a rhythmic accompaniment. The tempo marking 'stringendo poco a poco' is written above the first staff, and 'marc.' is written above the second staff. A 'Ped.' marking with an asterisk is located below the first measure of the lower staff.

dolce

This system contains the next two staves of music. The upper staff continues the melodic line, and the lower staff continues the accompaniment. The tempo marking '*dolce*' is written above the second staff.

This system contains the next two staves of music, showing a change in key signature to three sharps (F#, C#, G#).

f pesante e rinf.

Ped. *

Ped. *

This system contains the next two staves of music. The upper staff begins with a forte '*f*' dynamic. The tempo marking 'pesante e rinf.' is written above the second staff. Two 'Ped.' markings with asterisks are located below the first and second measures of the lower staff.

tr *veloce*

f

marc.

This system contains the final two staves of music on the page. The upper staff features a trill ('*tr*') and a 'veloce' marking. The lower staff begins with a forte '*f*' dynamic. The tempo marking '*marc.*' is written below the first staff.

pp *f*

sp

This system contains two staves of music. The upper staff begins with a piano (*pp*) dynamic and a fermata over a chord. The lower staff starts with a *sp* (sforzando) dynamic. The system concludes with a forte (*f*) dynamic.

fz fz rapido *pp dim. Led. rall.**

*Led. * Led. * 8.*

This system features a *fz fz rapido* section with a long slur over the upper staff. It transitions into a *pp dim. Led. rall.** section. The lower staff includes markings for *Led. * Led. * 8.*

1º tempo. *legato*

This system is marked *1º tempo.* and *legato*. It consists of two staves of music with a long slur over the upper staff.

7

This system contains two staves of music. A slur of 7 measures is indicated over the upper staff.

2.

This system contains two staves of music. A slur of 2 measures is indicated over the upper staff.

f *p*

pp *rinfz.* 13

pp *riten.* 2. Ped.

pp 3 5

ppp *mancando poco* *a poco quasi morendo*

