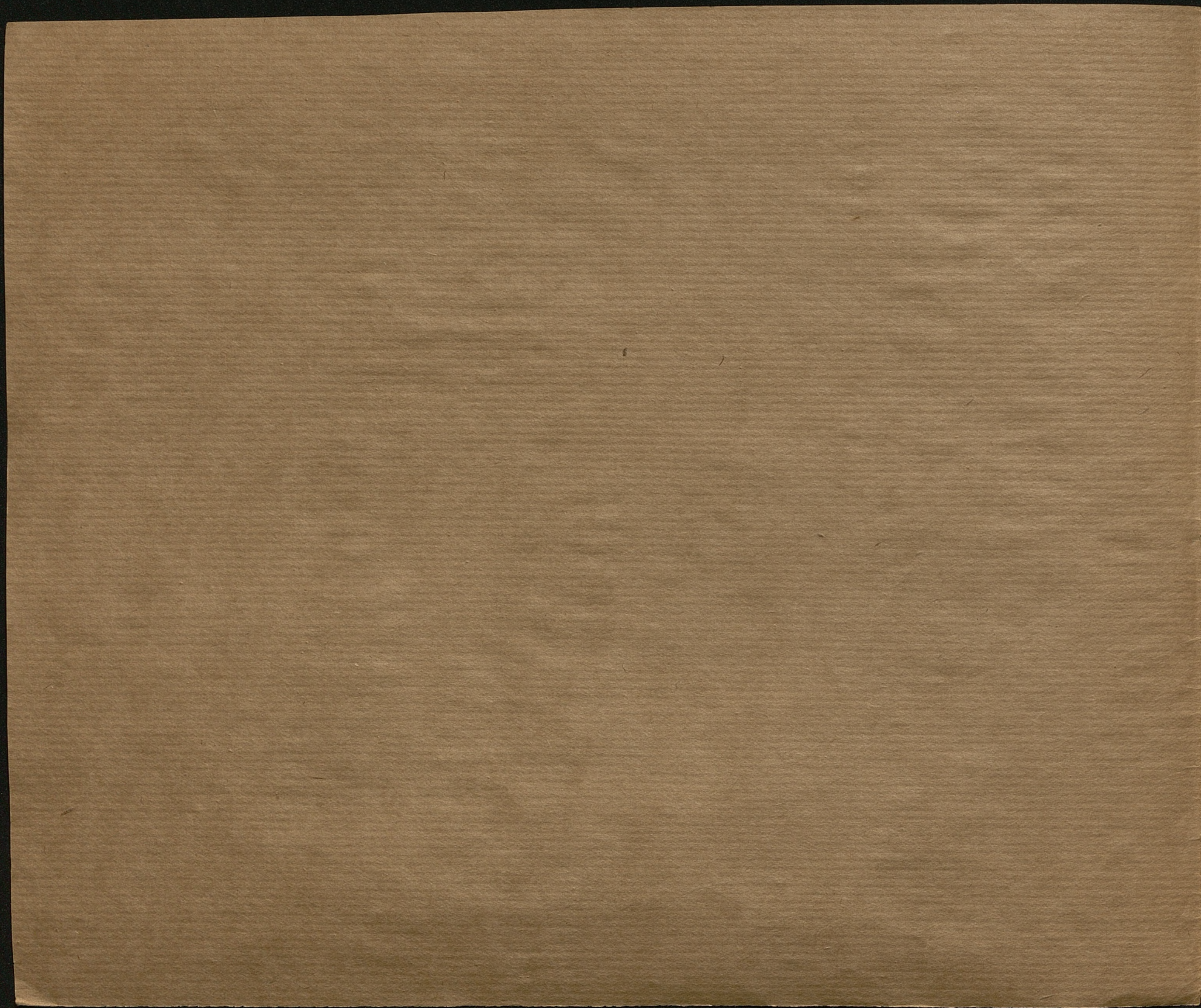


- 7448

II
musicalia



92

Sydnauer

MAZUR

utwór na

PIANO FORTE

i ofiarowany w dzień Imienin

Wielmożnemu

JÓZEFOWI CIESLIŃSKIEMU

Obywatelowi Gubernii Kaliskiej

przez

Leona Bondasiewicza

7448

W
Pm

MAZUR.

mf *mf*

f

p

BIBLIOTHECA
UNIV. TABELL.
CRACOVIENSIS

1009.10.27/28

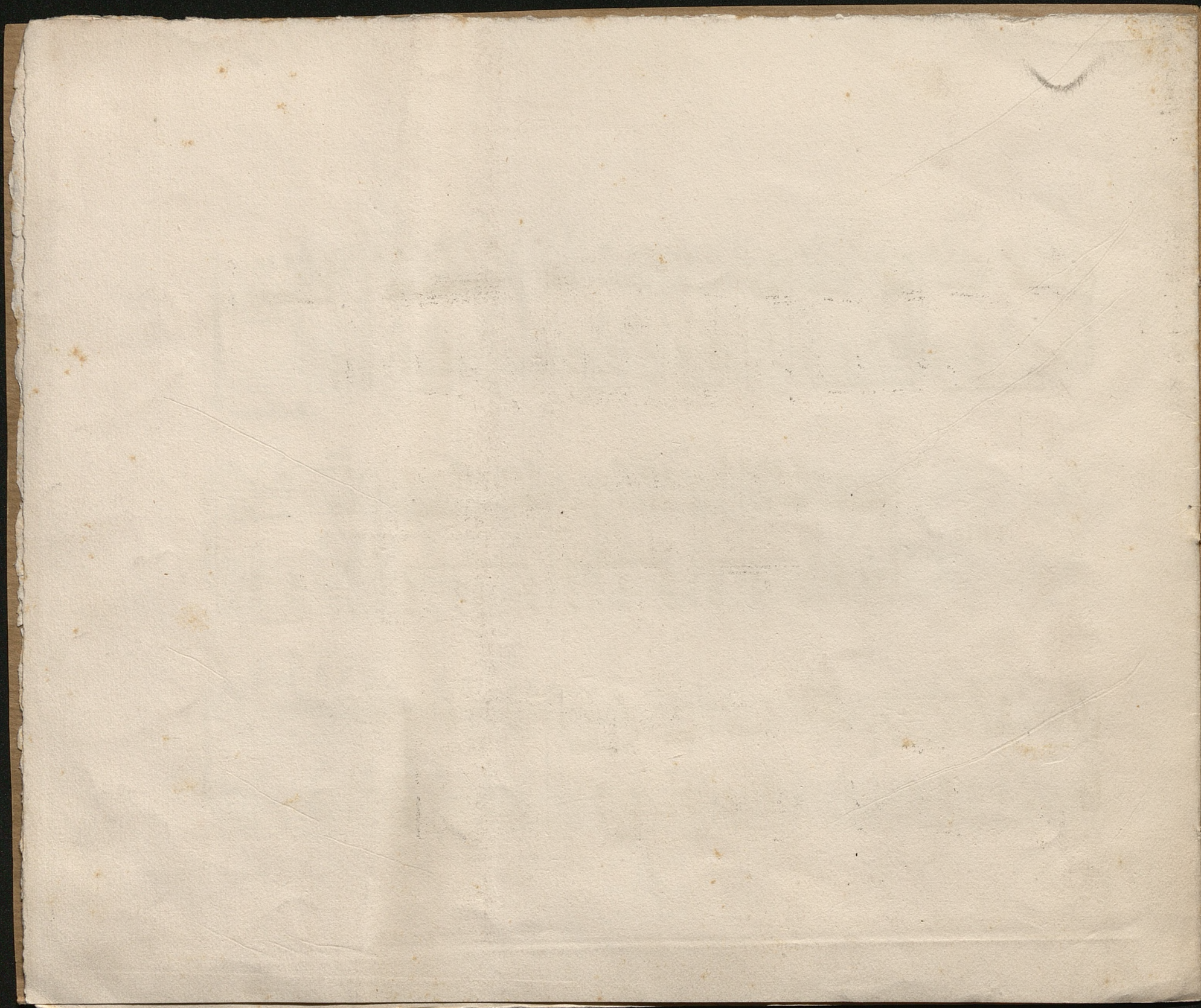
Musical score for the first system, featuring a treble and bass clef. The music consists of several measures with various notes, rests, and dynamics. The key signature has two sharps (F# and C#). The first measure has a treble clef and a bass clef. The second measure has a treble clef and a bass clef. The third measure has a treble clef and a bass clef. The fourth measure has a treble clef and a bass clef. The fifth measure has a treble clef and a bass clef. The sixth measure has a treble clef and a bass clef. The seventh measure has a treble clef and a bass clef. The eighth measure has a treble clef and a bass clef. The piece ends with a double bar line and a repeat sign.

Dal Segno.

TRIO.

Musical score for the TRIO section, featuring a treble and bass clef. The music consists of several measures with various notes, rests, and dynamics. The key signature has two sharps (F# and C#). The first measure has a treble clef and a bass clef. The second measure has a treble clef and a bass clef. The third measure has a treble clef and a bass clef. The fourth measure has a treble clef and a bass clef. The fifth measure has a treble clef and a bass clef. The sixth measure has a treble clef and a bass clef. The seventh measure has a treble clef and a bass clef. The eighth measure has a treble clef and a bass clef. The piece ends with a double bar line and a repeat sign.

Musical score for the final system, featuring a treble and bass clef. The music consists of several measures with various notes, rests, and dynamics. The key signature has two sharps (F# and C#). The first measure has a treble clef and a bass clef. The second measure has a treble clef and a bass clef. The third measure has a treble clef and a bass clef. The fourth measure has a treble clef and a bass clef. The fifth measure has a treble clef and a bass clef. The sixth measure has a treble clef and a bass clef. The seventh measure has a treble clef and a bass clef. The eighth measure has a treble clef and a bass clef. The piece ends with a double bar line and a repeat sign.



8

