

494

φ J.C.
March '83

THERE'S MAGIC IN THAT LITTLE SONG

A POPULAR
BALLAD

Arranged for, and Respectfully Dedicated

TO
Mrs. J. J. Ford
 BY

MADAME ANNA ABLAMOWICZ.

Piano Accomp.^t
25 Cts. net.

Guitar Accomp.^t
25 Cts. net.

Published by PETERS, WEBB & CO. Louisville, KY

Cincinnati.
PETERS, FIELD & CO

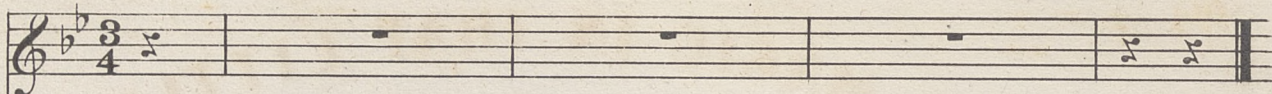
Baltimore.
W. G. PETERS.

Entered according to act of Congress in the Year 1889 by Peters Webb & Co. in the Clerk's Office of the District Court of KY

THERE'S MAGIC IN THAT LITTLE SONG.

Andantino espressivo.

VOICE.



PIANO.



There's ma - gic in that lit - tle song — Its simple li - quid me - lo - dy Can

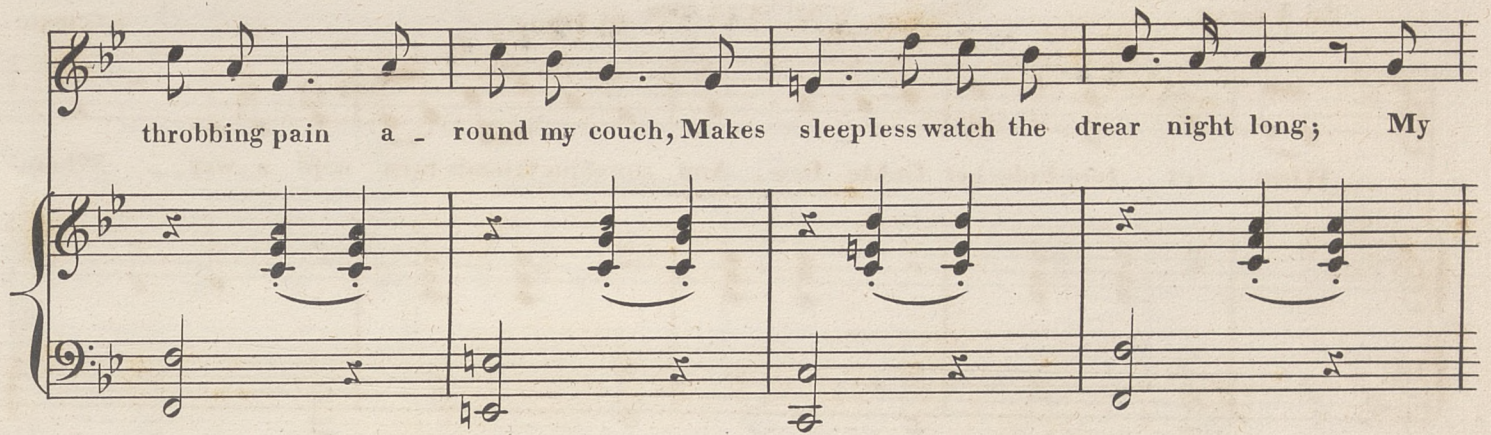
chase the gloom of care a - way, And bid grief's phantoms fly; When

Entered according to Act of Congress in the Year 1849 by Peters, Webb & Co. at the Clerk's office of the district Court of Ky. 1857-5.

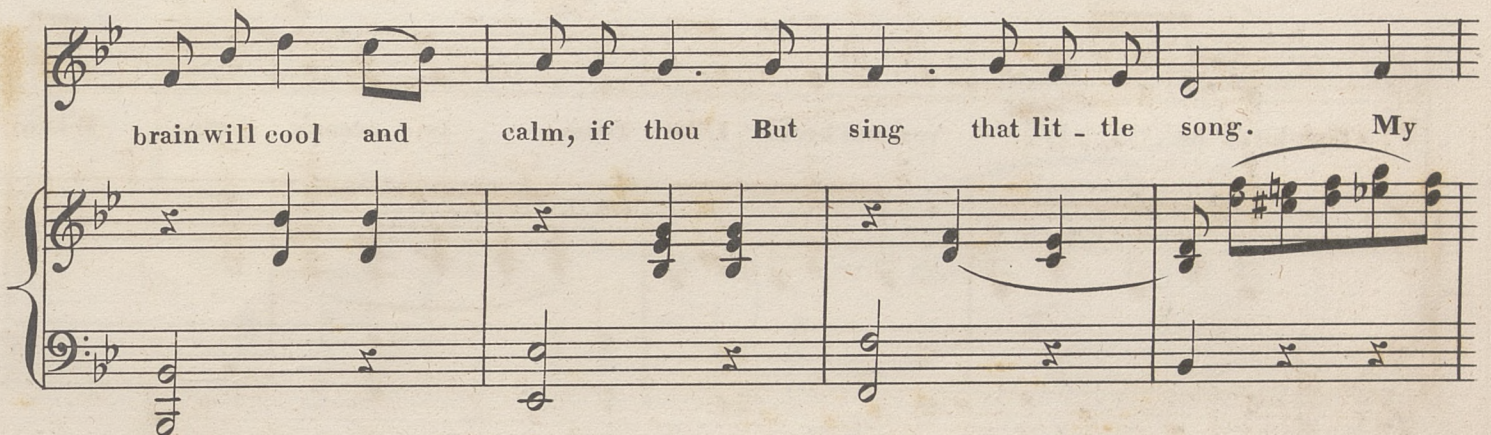
Bibl. Jagiell.
Muz. 2008 D 33/27
(194)

BIBLIOTHECA
UNIV. JAGELL.
CRACOVIENSIS

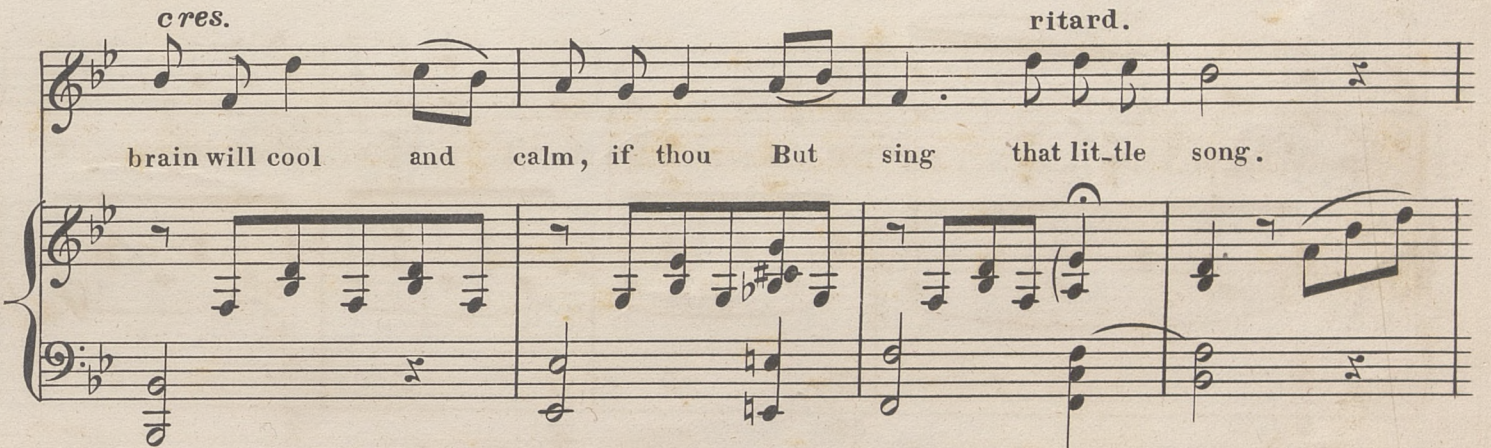
throbbing pain a - round my couch, Makes sleepless watch the drear night long; My



brain will cool and calm, if thou But sing that lit - tle song. My



cres. brain will cool and calm, if thou But sing that lit - tle song. *ritard.*



2d. VERSE.

ad lib.

a tempo.

When for tune hides her fickle face, And sunshine friends turn cold a way — When

first love's ho - - - ly vow was broke Like foam on ocean's spray. When

youth's bright hopes, by fell des-pair, Are crush'd as by a giant strong — I

will not rue my lot, if thou But sing that lit-tle song. I

will not rue my lot, if thou But sing that lit_tle song.

3d. VERSE. There's ma - gic in that lit_tle song, It soothes each stor - - - - my
 passion down; The hopes that blest me in my youth, A - - gain my day-dreams
 crown, Sweet vi - sions of de - parted joys, Fan - tas - tic on my
 mem'ry throug - I am a child a - - gain, and thou Dost sing that lit_tle
 song. I am a child a - - gain, and thou Dost sing that little song.

There's magic in - 1857. 5.



