

1400

MUSICALIA

VII 150.

ROLOMEZ

STAROŚWIECKI

NA

FORTEPIAN.

w Lit. J. V. Fleck & C^o.



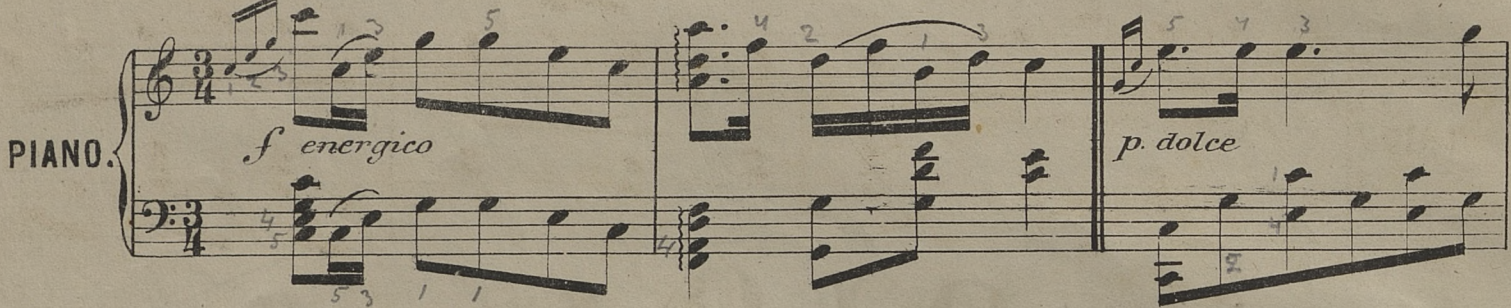
POLONEX.

Moderato.

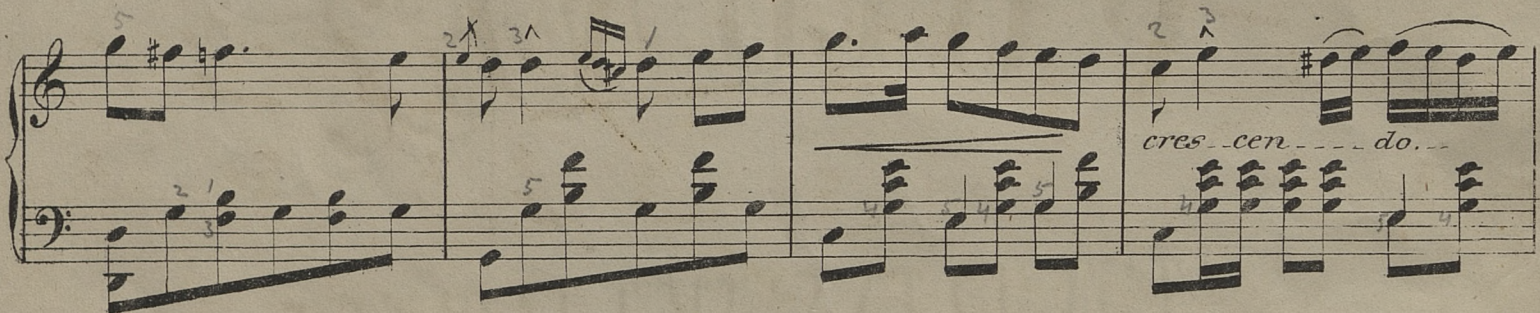
PIANO.

f *energico*

p. dolce



cres-cen-do.

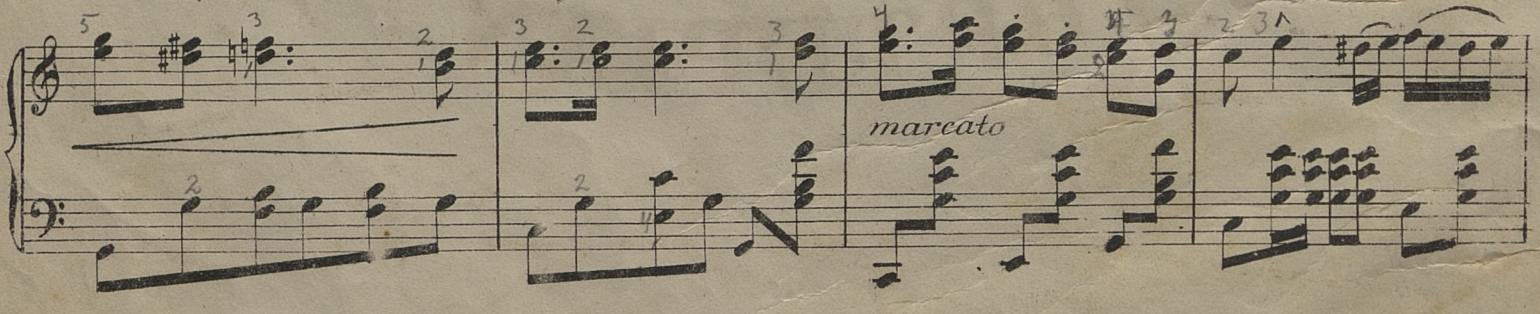


f

espressivo

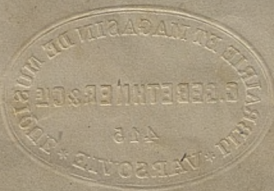


marcato



f

FINE.



1400

III



TRIO.

p. dolce con grazia

The first system of the Trio section consists of two staves. The treble staff begins with a treble clef and a 3/4 time signature. It contains a melodic line with notes marked with fingerings 5, 3, 2, and 1. The bass staff contains a harmonic accompaniment with chords and single notes. The dynamics are marked as *p. dolce con grazia*.

contando

The second system continues the Trio section. The treble staff features a melodic line with a triplet of eighth notes. The bass staff provides a steady accompaniment. The dynamics are marked as *contando*.

The third system of the Trio section shows a continuation of the melodic and harmonic themes. The treble staff has a melodic line with a triplet. The bass staff has a rhythmic accompaniment. The dynamics are marked as *f*.

cres. cen do

The fourth system of the Trio section features a melodic line in the treble staff with a triplet and a crescendo marking. The bass staff has a rhythmic accompaniment. The dynamics are marked as *f*.

dolce con grazia

The fifth and final system of the Trio section on this page. The treble staff has a melodic line with a triplet. The bass staff has a rhythmic accompaniment. The dynamics are marked as *dolce con grazia*.

D.C. Polonex.

