

Musikalische Volksbibliothek.

Edition Teich

Einzelangabe beliebter moderner
und klassischer Kompositionen.



10755

musicalia



No. 6619

Nocturne

Es dur

für Klavier

von

Fr. Chopin

op. 9 No. 2

Preis 40 Pf.

Eigentum des Verlegers

C.F. TEICH, MUSIKVERLAG, LEIPZIG

Lindenstraße 14.

Nocturne.

10755

Andante. M.M. ♩ = 122.

14321

Fr. Chopin, Op. 9, No 2.

Piano.

Tempo I.

C. F. T. 6619

zu empfehlen:

Halbhinder. Gesetzlich geschützt. Elegante Noten-Mappe zum Selbst-Einheften von 50 Musikbogen.
 reich praktisch! Die Noten lassen sich eben so bequem aufschließen und umwenden
 ander hergestellte Bände.



f a tempo *poco rall.* **Tempo I.** *fp*

This system contains the first two measures of the piece. The treble staff begins with a half note G4, followed by quarter notes A4, B4, and C5. The bass staff has a half note G2, followed by quarter notes A2, B2, and C3. Dynamics include *f a tempo*, *poco rall.*, and *fp*. There are several fingerings and slurs indicated.

cresc. *dim.*

This system contains measures 3 and 4. The treble staff has a half note G4, followed by quarter notes A4, B4, and C5. The bass staff has a half note G2, followed by quarter notes A2, B2, and C3. Dynamics include *cresc.* and *dim.*. There are several fingerings and slurs indicated.

p *pp* *poco rubato* *sempre pp* *dolcissimo*

This system contains measures 5 and 6. The treble staff has a half note G4, followed by quarter notes A4, B4, and C5. The bass staff has a half note G2, followed by quarter notes A2, B2, and C3. Dynamics include *p*, *pp*, *poco rubato*, *sempre pp*, and *dolcissimo*. There are several fingerings and slurs indicated.

p *con forza* *stretto.*

This system contains measures 7 and 8. The treble staff has a half note G4, followed by quarter notes A4, B4, and C5. The bass staff has a half note G2, followed by quarter notes A2, B2, and C3. Dynamics include *p*, *con forza*, and *stretto.*. There are several fingerings and slurs indicated.

cresc. *ff senza* *Tempo* *cresc.*

This system contains measures 9 and 10. The treble staff has a half note G4, followed by quarter notes A4, B4, and C5. The bass staff has a half note G2, followed by quarter notes A2, B2, and C3. Dynamics include *cresc.*, *ff senza*, *Tempo*, and *cresc.*. There are several fingerings and slurs indicated.

dimin. *rallent. smorz.* **Tempo I.** *pp*

This system contains measures 11 and 12. The treble staff has a half note G4, followed by quarter notes A4, B4, and C5. The bass staff has a half note G2, followed by quarter notes A2, B2, and C3. Dynamics include *dimin.*, *rallent. smorz.*, **Tempo I.**, and *pp*. There are several fingerings and slurs indicated.

Einfache Ausgabe
Preis jeder Nummer
40
Pfennige.

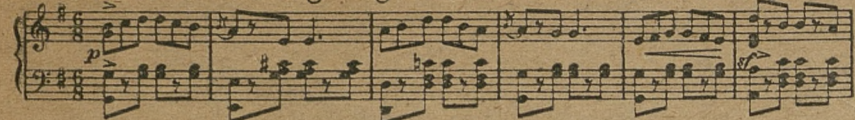
Edition Teich - Musikalische Volksbibliothek.

Vornehme Ausstattung, vorzüglicher Notendruck, schönes starkes Papier.

Probe-Takte beliebter Klavierstücke.

Elite-Ausgabe
Preis jeder Nummer
50
Pfennige.

No 6601. Unter Hindenburgs siegreichen Fahnen. Marsch. Paul Voigt.



No 6602. Elektrische Glockenspiele. Mazurka. E. Krell.



No 6603. Traum eines jungen Mädchens. Salonstück. Franz Bendel.



No 6604. O Deutschland, hoch in Ehren und: In der Heimat.



No 6605. In der Heimat gibts ein Wiedersehn! Marsch. Ferd. Fenn.



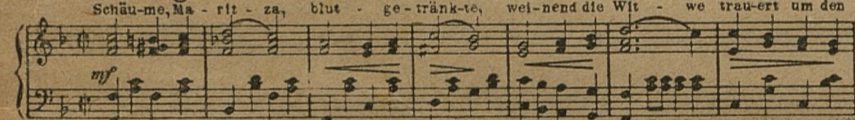
No 6606. Musketier'sind lust'ge Brüder. Marsch. Max Schiek.



No 6607. Gruß an Deutschlands Söhne. Marsch. W. Berndt.



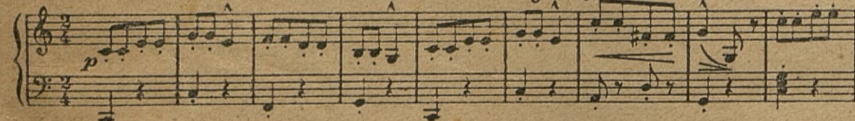
No 6608. Bulgaren-Marsch. O. Teich.



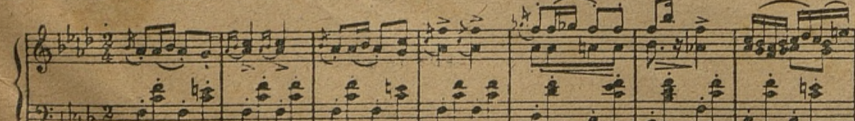
No 6609. Serenade. J. Haydn



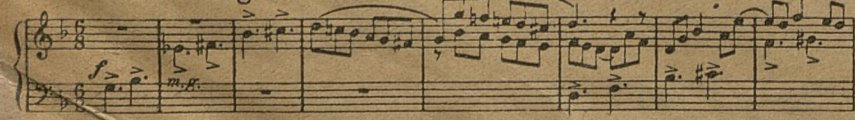
No 6610. Andante aus der Paukensinfonie. J. Haydn.



No 6611. Moment musical. Franz Schubert, Op. 94 No 3.



No 6612. Katzenfuge. D. Scarlatti.



No 6613. Pastorale. Scarlatti-Tausig.



No 6614. Sonntags am Rhein. Salonstück. F. Blumenberg.



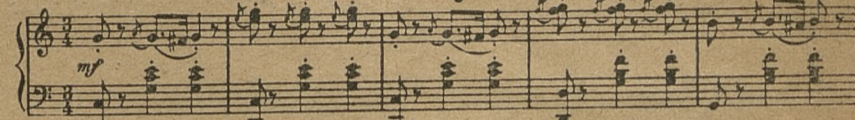
No 6615. Dämmerstündchen. Salonstück. E. Langerstädt.



No 6616. Unter deutscher Flagge. Marsch. L. Heidenreich.



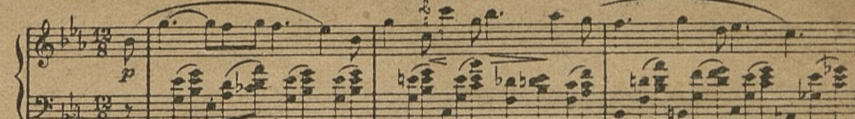
No 6617. Schelmerei. Salon-Mazurka. L. Jessel.



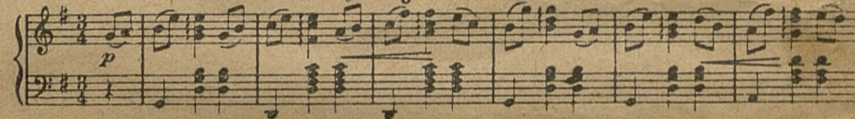
No 6618. Im Rosenhain. Idylle. Th. Oesten.



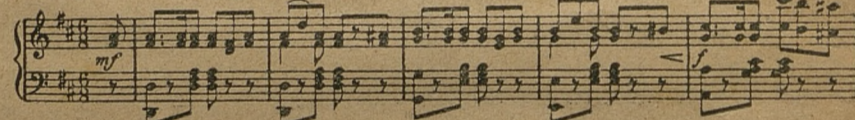
No 6619. Nocturne Es-dur. Fr. Chopin, Op. 9 No 2.



No 6620. In der Almhütte. Idylle. J. Polzer.



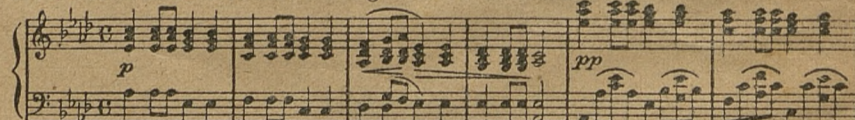
No 6621. Waidmannsfreuden. Marsch. O. Radler.



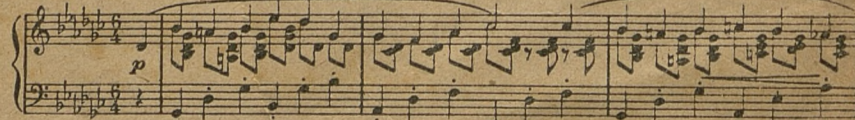
No 6622. Waldesrauschen. Ausgabe in Ges-dur. Fr. Braungardt.



No 6623. Polnisches Lied. Ausgabe in As-dur. C. Burow.



No 6624. Dornröschen. Salonstück. F. Bendel.



No 6625. Abendstille. Salonstück. R. Tourbié.



No 6626. Soldatenlieder-Marsch. F. Krimmling.



Verlag von C. F. T.

