



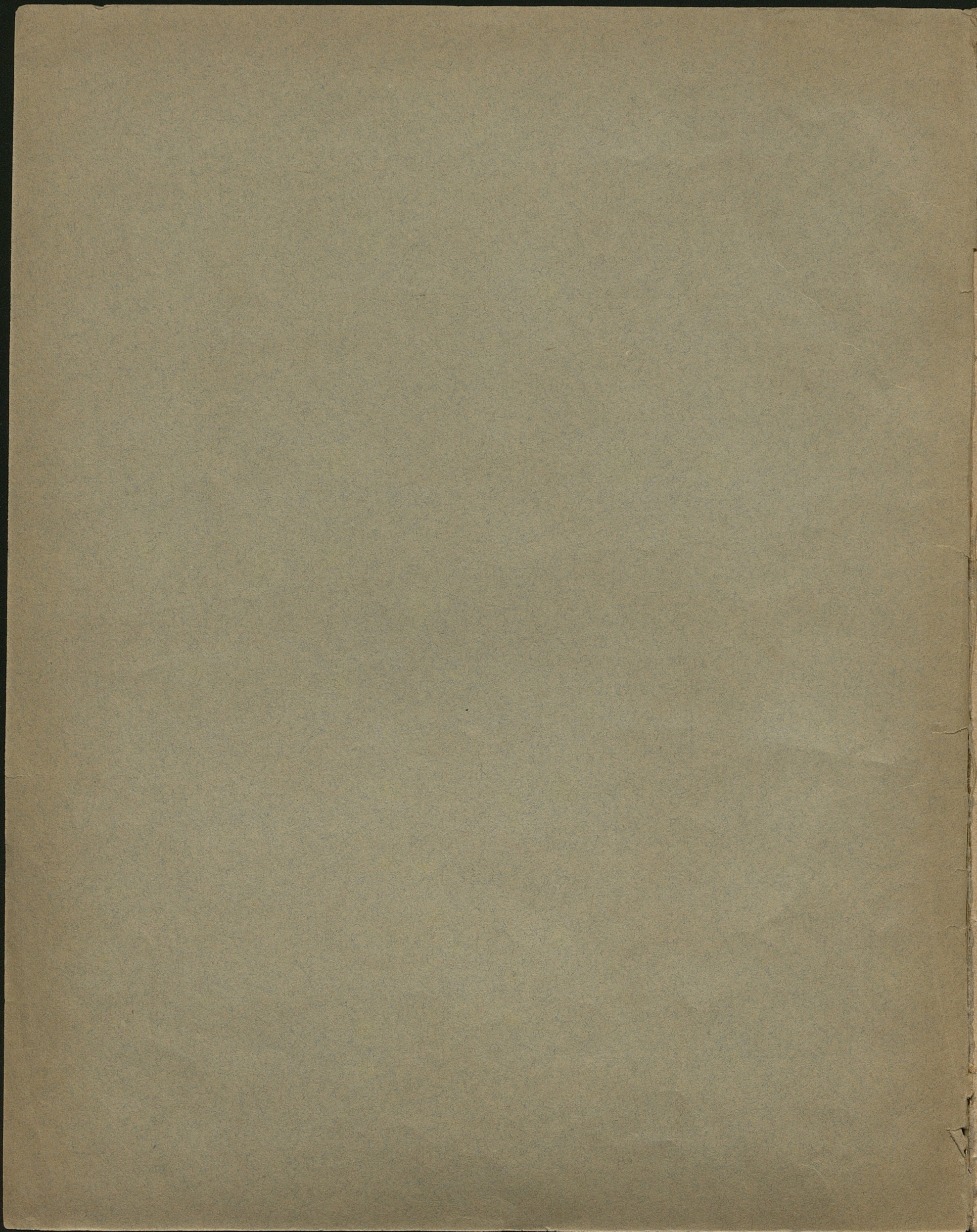
10753

2

BIBLIOTHECA
INST. JAGIELL.
CRACOVENSIS

musicalia







10753

BIBLIOTHECA
UNIVERSITATIS
JAGIELLONICAE
CRACOVENSIS

musicalia



COMPOSITIONS

CELEBRES



1. DEUX MAZURKAS Op. 6.7.	50.
2. NOCTURNE Op. 9. N. 1.	50.
3. NOCTURNE Op. 9. N. 2.	50.
4. NOCTURNE Op. 15. N. 2.	50.
5. IMPROMPTU Op. 29.	75.
6. MARCHE FUNEBRE Op. 35.	50.
7. NOCTURNE Op. 37.	50.
8. POLONAISE Op. 40.	50.
9. TROIS VALSES Op. 64. N. 1.	50.
10. ETUDE EXECUTÉE par <i>F. LISZT</i> (E. mol.)	43.
11. GRANDE VALSE BRILLANTE Op. 18.	1..



MOSCOU chez J. GROSSER

COMMISSIONAIRE DE LA CHAPELLE IMPERIALE DES CHANTRES DE LA COUR

Moscou Imprimerie chez F. Wolhoff, et C. N. 54.





10753
III Mus.
2

F. Chopin. Op. 9. № 1.

Larghetto.

M. M. ♩ - 116.

NOCTURNE.

Musical score for F. Chopin's Nocturne Op. 9, No. 1, page 2. The score is in 6/8 time and B-flat major. It features two systems of grand staff notation (treble and bass clefs). The piece is marked 'Larghetto' and includes various performance instructions such as 'p espress.', 'Ped', 'smorz.', 'p', 'fz p', 'gva... loco', 'legatiss.', 'tr', 'f appassinato.', 'cres.', 'con forza.', 'p', 'sotto voce.', 'pp', and '495. smorz.'. Measure numbers 11, 22, and 495 are indicated. The score concludes with a 'Ped' marking and a circled cross symbol.

poco rallent. *ppp*

Tempo 1^o

f *cres.*

f poco stretto.

fz.p poco rallent.

Tempo 1^o

f

4
Bibl. Jsg.

fz p
poco rallent.

Tempo 19

f
ff
Ped

con forza.

pp
sempre. Ped

ppp
legatissimo.

sempre pianissimo.
f
sempre. *p*

C. II. N° 1.

Tempo 19

smorz. rall e dolciss.

gva. 3 20 loco
legatissimo.

tr

f cres ff dimin.
gva. loco

p smorz.
Ped Ped Ped Ped

ff ritenuito
accelerando. dimin.
Ped Ped Ped

C. II. № 1.



