

kat. komp.

6772

Czasop.

1935

RUBRICELLA

PRO ANNO DOMINI

1935

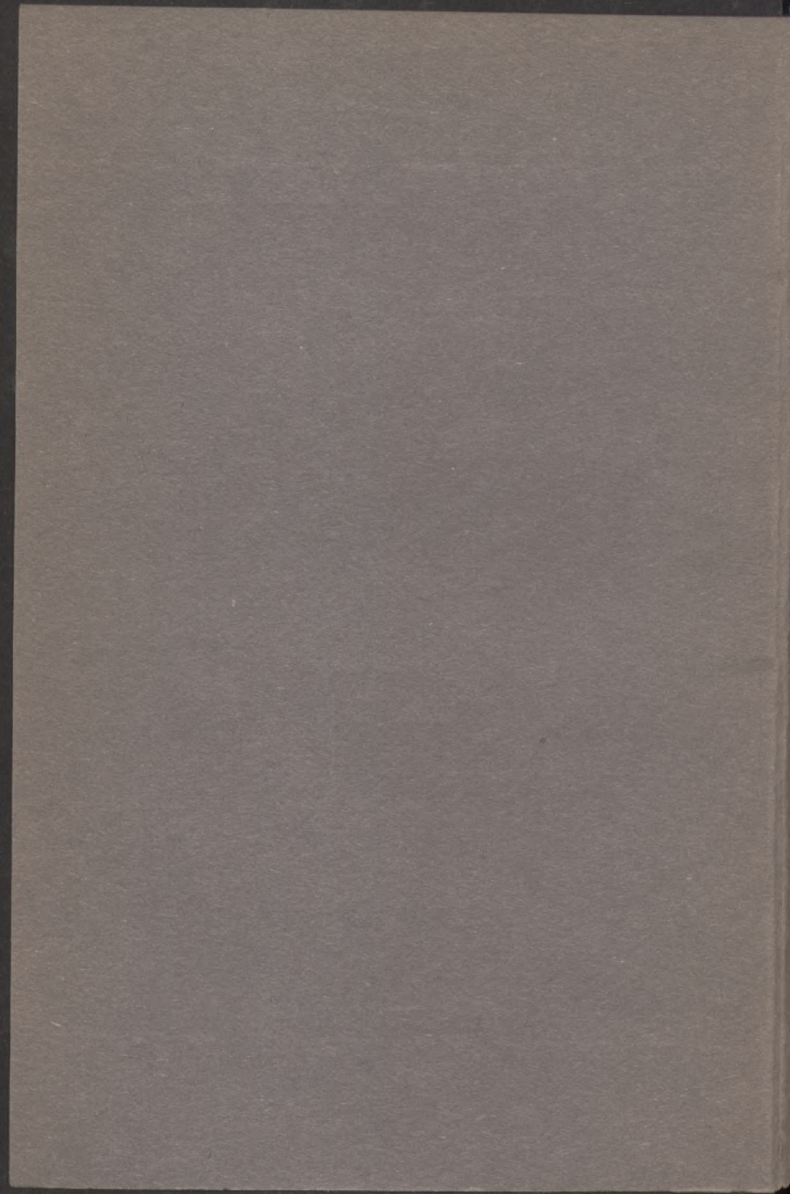
A D U S U M

FF. MINORUM S. P. N. FRANCISCI
CAPUCCINORUM

PROVINCIAE
CRACOVIENSIS et VARSAVIENSIS

EIUSDEMQUE ORDINIS MONIALIUM
DISPOSITA

CRACOVIAE
TYP. SOCIETAT. „POWŚCIĄGLIWOŚĆ I PRACA”
1934.



RUBRICELLA

PRO ANNO DOMINI

1935

A D U S U M

FF. MINORUM S. P. N. FRANCISCI
CAPUCCINORUM

PROVINCIAE
CRACOVIENSIS et VARSAVIENSIS

EIUSDEMQUE ORDINIS MONIALIUM
DISPOSITA



Biblioteka Jagiellońska



1002545770

CRACOVIAE
TYP. SOCIETAT. „POWŚCIĄGLIWOŚĆ I PRACA”
1934.

TABULA TEMPORARIA

pro anno Domini MCMXXXV.

Littera Martyrologii	nigra F.
Aureus numerus	17.
Littera Dominic.	f.
Indictio Rom.	3.

Festa mobilia.

Dom. post Epiph.	5.
Dom. Septuag.	17 Febr.
Dies Cinerum	6 Mart.
Resurrect. Dni	21 Apr.
Ascensio Dni	30 Mai.
Dom. Pentec.	9 Jun.
Fest. SS. Trin.	16 Jun.
Fest. SS. Corp. Chr.	20 Jun.
Dom. post Pent.	24.
Dom. I. Advent.	1 Dec.

Quattuor anni Tempora.

Verna:	13, 15, 16 Mart.
Aestiva:	12, 14, 15 Jun.
Autumn.:	18, 20, 21 Sept.
Hiemalis:	18, 20, 21 Dec.

Tabula Chronologica.

A creatione mundi juxta Martyrol. Rom. .	7135.
Juxta chronist. opin.	5939.
A nativit. J. Chr.	1935.
Ab ortu S. P. N. Franc.	753.
Ab instit. Ord. n. Capuccin.	407.
Ab exalt. SP. Pii XI.	13.
Post Petrum S.	261.
A correct. Calend. per Greg. Pp. XII. . .	352.
Ministri Gener.	70.



0872

20

178ah 1934/35

Modi recitandi Divinum Officium.

(OF) „**Officium festivum**“. *Mat.* Inv. Hymn. Ant. Pss. et V. de Propr. vel de Com. LL. ppr.; *Laud.* et *Horae* Ant. de Propr. vel de Com, Pss. de Dom. pro Festis. *Vsp.* Ant. ppr. vel de Com. Pss. de Dom., respect. ppr.— *Compl.* de Dom.

(OM) „**Officium mixtum**“: partim festivum partim feriale: *Mat.* Inv. Hymn. de propr. vel de Com. Ant. Pss. et V. de Fer. L. 1 N. et R. de Scrip. occur. (nisi habeat ppr.) *Laud. Hor.* et *Vsp.* Ant. Pss. de Fer. a cap. de Propr. vel de Com. — *Compl.* de Feria.

(OS) „**Officium simplex**“: *Mat.* Inv. Hymn. de Propr. vel de Com. Ant. 9 Pss. continuatim et V. de Fer. Absol. secund. Ferias, Bened. *Ille, Cuius* v. *Quorum, Ad societ.* L. 1 et 2 cum R. de Scrip. occur. Gloria... 3 ppr. *Te Deum.*; *Laud. Horae* et *Vsp.* Ant. Pss. de Feria a cap. de Propr. vel de Com. *Compl.* Fer.

Off.: de Dom., Feriis, BMV. in Sabb., et Vigil. spec. notatur, vel ut in Breviar.

In lectione „**Martyrologii**“ numerus Lunae quotidie annuntiatur ille, qui positus est sub littera „F“ maiori, nigra.

In **Off. mixtis et Simplicibus** LL. I Noct. cum suis Respons. sumuntur *de Scrip. occur.*, nisi aliter notetur.

Or. „**Concede**“ semper dic. de Mis. BMV.

Abbreviationes introductae in Rubricella.

(OF) = Offic. festivum (OM) = Offic. mixtum.

(OS) = Offic. simplex. CD = Complet. Domin.

CF = Complet. Feriae. IO = Imperata omittit.

⊙ = Permittuntur Missae votivae privatae.

■ = Permittuntur Misae privatae de Requite.

(p. Prm.) (p. Tt.) (p. Sx.) (p. Nn.) = Missa Convent. celebranda: post Primam, post Tert., post Sext., post Nonam; — si nullum signum, tunc celebranda est post Tertiam.

Ordo servandus in celebrandis Missis votivis privatis.

Missa votiva	Color	Missa	Gloria	Orationes	Credo	Praefatio	In fine Missae
De SS. Trinit.	Albus	Propr.	Omitt.	2 et 3 diei curr.	Omitt.	Propr.	Bened. Dno.
De Spir. Sancto	Rubeus	Propr.	Omitt.	2 et 3 diei curr.	Omitt.	Propr.	Id.
De SS. Sacram.	Albus	Propr.	Omitt.	2 et 3 diei curr.	Omitt.	De Nativ.	Id.
SS. Corde Jesu	Albus	Cogitationes	Omitt.	2 et 3 diei curr.	Omitt.	Propr.	Id.
De Passione	Violac.	Propr.	Omitt.	2 et 3 diei curr.	Omitt.	De Cruce	Id.
De S. Cruce	Rubeus	Propr.	Omitt.	2 et 3 diei curr.	Omitt.	De Cruce	Id.
De B. M. V.	Albus	Propr.	Om. nisi in sabb.	2 di. curr. 3 de Spir. Sancto	Omitt.	Propr.	id. — in Sabb. Ite Missa est
De Angelis	Albus	Propr.	Semper dicitur	2 et 3 diei curr.	Omitt.	O. T. C. (e)	Ite Missa est
De S. Ioseph	Albus	Propr.	Omitt.	2 et 3 diei curr.	Omitt.	Propr.	Bened. Dno.
De Apostol.	Rubeus	Propr.	Omitt.	2 et 3 diei curr. (b)	Omitt.	Propr.	Id.
De Sanctis	Festi (a)	Propr. vel de Com.	Omitt.	2 et 3 diei curr.	Omitt.	O. T. C. (e)	Id.
Pro quac. necessit.	Violac.	Propr.	Omitt.	2 et 3 diei curr.	Omitt.	id.	Id.
Pro Infirmis	Violac.	Propr.	Omitt.	2 et 3 diei curr.	Omitt.	id.	Id.
Pro Sponsis	Albus	Propr.	Omitt.	2 et 3 diei curr. (c)	Omitt.	id.	Id.
Pro Defunct.	Niger	Ut in Missali	Omitt.	ut in Missali (d)	Omitt.	Propr.	Requiesc. in pace

In fine Missae legitur Evangelium S. Joannis IN PRINCIPIO, nisa legendum sit Fer. aut Vigil. aut aliud stricte proprium officii commemorati-

a) Pro Ss. Innocentibus color rubeus.

b) In Miss. Votiv Ss. Petri et Pauli in or. *A cunctis*, si dicenda sit, eorum nomina omittuntur (Nov. Rub.)

c) Si occurrat fest. duplex, omitt. 3 oratio, nisi commemoratio occurrat,

d) In 3 primis Missis unica or. et semper dic. *Sequentia*. — In quotidianis vero (lectis vel cantatis) 3 or. aut plures (sed numero impares). quarum 1. *Deus qui inter Apostolicos*. etc, ultima autem *Fidelium*, si Missa celebretur pro defunctis in genere. Si vero pro defuncto vel pro defunctis certo designatis, 1 or. erit pro ipso vel ipsis, 2. ad lib, ultimi semper *Fidelium*. „*Sequentia*“ semper in cantatis, et in Conventualibus; in privatis vero ad lib.

e) id est de Octava, vel de Tempore, vel Communis.

DE MISSIS CELEBRANDIS IUXTA RUBRICAS.

I. De Missa in genere. — Omnes sacerdotes, sive saeculares sive regulares, omnino Missas celebrent iuxta Kalendarium ecclesiae vel Oratorii publici, in quo celebrant: exclusis tamen peculiaribus ritibus Ordinum et ecclesiarum propriis. Idem servetur in Oratorio semipublico, sive in Capella principali Seminariorum, Collegiorum, piarum Communitatum, Hospitalium, Carcerum et similium. — Si iuxta Kalendarium ecclesiae vel Oratorii praefatorum, in quo celebrant, Missae votivae vel aliae permittantur, Missam celebrare valent Kalendario loci vel proprio conformem (more tamen festivo), vel de Requie, vel Votivam, vel etiam de occurrente Feria maiori.

In Oratoriis privatis vel secundariis piarum Communitatum Missa convenire potest cum Officio celebrantis. — Secluso tamen speciali privilegio, in Oratoriis privatis Missa prohibetur: 1. In festis: Nativ. Domini, Epiph., Pasch., Ascens., Pentec. — 2. In festis Assumpt. et Concept. Immac. B. M. V. — 3. In festis S. Joseph (19 Martii), Ss. App. Petri et Pauli, et Omnium Sanctorum. — 4. Ultimo triduo Majoris Hebdomadae.

Nota. Regulares ex privilegio possunt celebrare Missam priv. una hora ante auroram, idest tribus horis ante ortum solis, sed tantum in ecclesiis propriis (in quibus id etiam facere possunt sacerdotes saeculares ex eodem privilegio), et 1 hora post meridiem.

Missae solemnes vel cantatae, quae officio diei non sunt conformes (exceptis tamen Missis quae vel per Rubr. praecipiuntur, vel ad commemorationes in Off. diei factas referuntur) celebrari debent *post Nonam* (n. 4053 Rubr. Miss. Tit. XV. n. 5).

II. De Missa Conventuali. 1. Missa Conv. generaliter concordare debet cum Officio recitato.

2. in *Feriis Quadrag. ac Passion.*, in *Feriis Quat. Temp. extra Oct. Pent.* et in *Vigiliis communibus*, necnon in *Feria II Rogationum*, Missa Conventualis erit: a) *de Officio diei* cum com. *Feriae* aut *Vigil.* in dp. 1 et 2 cl. ac per Octav. privil. II Ordinis. — b) *de Feria* vel *de Vigil.* in dp. mai., min., semid. et per Octav. III Ordin., aut Oct. comm. addita com. *Officii diei*, sine Gl. et Cr. — c) *de Feria* in concurrentia *Feriae maj.* et *Vigil.* cum com. *Officii diei* et *Vigil.*, sine Gl. et Cr., UE. Vig.

N. B. Supradictis temporibus nos non tene-mur nisi ad unicam Missam Conv. (S. RR. C., 2 Maii 1921). — 3. *Missa Conventualis*, non obstante quacumque consuetudine, iuxta Rubricas *Tit XV.* sequenti ordine dici debet. In festis duplicibus, et semiduplicibus, in Dominicis, et intra Octavas: *dicta in Choro Hora Tertia*. In Festis Simplicibus et in *Feriis* per annum: *dicta Sexta*. In Adventu, Quadragesima et Quattuor Temp. (etiam infra Octavam Pentecostes) et *Vigiliis* quamvis sint dies solemnes, Missa celebretur *post Nonam*. — Missa autem Defunctorum dici debet *post Primam*.

III. De Missa in duplic. maj. vel min. aut semidupl. perpetuo aut accidentaliter impeditis. — *In festis duplicibus* maior. vel minor. aut semiduplicibus, impeditis sive perpetuo sive accidentaliter, dici possunt de eis Missae etiam privatae ad libitum sacerdotis, dummodo Officium impediens non fuerit: 1^o Duplex I vel II classis: — 2^o Dominica quaevis, licet anticipata vel, etiam quoad Officium, reposita; — 3^o Octava Epiph., Pasch., Pentec., et Corp. Christi; — 4^o Dies Octava privilegiata III ordinis, v. g. Ascensionis. — 5^o Feria IV Cinerum, fer. II. III. IV Mai. Hebdom.; — 6^o Vigilia Nativ. Domini, Epiph. et Pentec.

IV. De Missa circa festum commemoratum in Officio vel Martyrologio. — *De quovis Officio* ad Laudes commemorato, aut de Mysterio, San-

cto vel Beato, cuius mentio illa die fiat in Martyrologio vel in eius appendice pro respectivis ecclesiis approbata, dici possunt ritu festivo Missae etiam privatae singulis diebus, praeterquam: In Officiis duplicibus; — in quavis Dominica etiam anticipata, vel, licet quoad solam Missam, primo reposita; — In Octavis privileg.: nempe Nativit., Epiph., Pasch., Ascens., Pentec., Corp. et Cord. Christi; ac Immac. Conc. BMV; — Toto tempore Quadrage.; — In Feriis Quattuor Temp.; — In Feria II Rogation.; — In qualibet Vigilia.

V. De Missa privata in Feriis et Vigiliis. — In Feriis Quadrages., Quattuor Temp., II. Rogation., et Vigiliis, si occurrat Officium duplex aut semiduplex (non tamen si occurrat duplex I aut II classis, aut Octava privilegiata II ordinis) Missae privatae dici possunt ad libitum sacerdotis aut de Officio diei cum com. Feriae vel Vigiliae, aut de Feria vel Vigilia cum com. Officii diei.

Item prima infra hebdomadam die, in qua resumitur Missa alicuius Dominicae ab Officio nobiliori impeditae, Missae privatae dici possunt aut de Officio diei cum com. Dominicae, aut de ipsa Dominica cum com. Officii diei.

VI. De Missa votiva SS. Cordis Jesu. — Unica, more festivo, ut Missa votiva *pro re gravi*, celebrari potest cum *Gloria* et *Credo*.

Hanc licet celebrare prima cuiusvis mensis feria VI in ecclesiis et oratoriis, ubi peculiaria exercitia pietatis in honorem Divini Cordis, *approbante loci Ordinario*, mane peraguntur, et semper sumenda est Mis. *Cogitationes*. Prohibetur autem:

1^o In festis Christi Domini; 2^o in festo Purificat. B. M. V.; 3^o in dupl. I classis; 4^o in Vigilia Epiph.; 5^o Feria VI in Parasceve; 6^o infra Octavas privileg. Domini, aliasque Octavas alicubi privilegiatas; 7^o in Commemoratione Omnium Fidelium Defunctorum; 8^o diebus festivis, etiam suppressis, in ecclesiis parochialibus unam tantum Missam habentibus.

VIII

Si, Feria VI post Oct. Ascens., Officium et Missa de ea fit, juxta rubricas, etiam Missa de eadem dicatur cum iisdem privilegiis Missae votivae de Sacratissimo Corde Jesu — Item Fer. 6. occurrente die 2. 3. vel 4. Januarii loco Miss. vot. legenda erit Missa *Puer natus est* de die 30 Decembris, cum iisdem privilegiis.

Apud nos. — Vi indulti S. Sedis omnes sacerdotes nostri Missam votivam privat. SS. Cordis eadem Fer. VI in nostris Eccl. celebrare possunt, quae Missa *prohibetur iisdem diebus ac Missa vot. solemnis*; ac insuper in *dup. II. cl.*, in *Feriis Quadrage.*, in *Vigil.* et *Quattuor Temp.*, et die in qua anticipanda vel reponenda est Missa Dom. imped. — In hac Missa non dicitur *Gloria* neque *Credo*, cum orat. pro Missis votiv. praescriptis. Praef. propria semper. (Decr. 29 Jan. 1929).

VII. De Missa votiva Concept. Immaculae B. M. V. in Sabbato. — Haec Missa dicitur in Sabbatis ubicumque nostro Calendario uti licet; vetat. autem in *dup. 1. et 2. cl.*, infra Octav. privil. Epiphan., Paschae, Pentecost., SS. Corp. et Cord. Chr., in Vig. Nativ. Domin., Epiph. et Pentec. Vet. insuper in Sab. Quadr., Quat. Temp., (Decr. 9 Febr. 1913) et rel. Vigiliis. Notandum vero est, quod Sabbatis, in quibus incidit aliquod festum B. M. V., vel dies inf. Oct. Ejusd. sive de eo recitetur Officium sive de alio festo, quod non sit 1. vel 2. cl., Missa potest quidem dici de B. M. V., at non *Gaudens* de Immac. Concept., sed de festo, vel de die infra Oct. Ejusd. more non votivo sed festivo cum Gl., Cr. et Praef. ppr. cum Evang. S. Joann. in fine (**S. R. C. 30 Jun. 1866**) excep. Sabb. infr. Oct. Nativ. B. M. V., in qua omitt. „Cr.“

In Sabb. Quadrage., Quat. Temp., Vigil. et in Sabb. in quo anticipanda vel reponenda est Miss. Dom. imped., tunc in Miss. adjungi poterit or. de Concept. Immacul. Quod si adsit specialis concursus populi, hisce Sabbatis unica Missa lecta, cum Ev. Sabb. vel Vigil. in fine, celebrari poterit, quoties Missa cum cantu commode haberi nequeat.

VIII. De Missis votivis privatis. — Missae *votivae*, etsi cum externa sollemnitate cantatae, privatae sunt et ordinantur iuxta tabellam pag. IV. — *Cantatae* prohibentur in: duplicibus quibuslibet; Dominicis, etiam anticipatis; Octavis privilegi.; Fer. IV. Cin., II, III, IV. Mai. Hebdom.; Vig. Nat., Epiph., Pent.; Rog., ubi unica sit Mis. et fit processio. — *Lectae* prohibentur in: dupl. quibuslibet; Dom., etsi anticip.; Octavis privil.; diebus Oct. simpl, etsi tantum commemoratis; Vig. omnibus; Feriis Quadrag., Pass., II Rog., IV Temp.; Fer. a 17 ad 23 Dec.; Fer. III Rog., ubi una Mis. et fit processio; Feria, in qua prima vice occurrit Mis. Dom. impedita.

IX. De Missa pro Sponsis. — Quoties sponsis, iuxta can. 1101, danda est solemnis benedictio, ut in Missali, dicenda est Mis. vot. pro Sponsis, de licentia Ordinarii loci etiam tempore clauso (can. 1108), exceptis tantum:

Dom. et festis de praecep. etiam suppressis, dupl., 1 et 2 cl., Octavis Epiph., Pasch., Pent. et Corp. Chr.; Comm. OO. Fid. Def.; Vig. Nat., Epiph., Pent.; Fer. IV Cin., II, III, IV. Mai. Hebdom.; Feriis Rog., ubi una Mis. et fit processio.

Diebus sic impeditis (exc. Comm. OO. Def.) dic. Mis. de die, addita **or. pro Sponsis** primae orationi Missae, sub una concl., et datur benedictio.

Aliis diebus dic. Mis. vot. pro Sponsis (cfr. tabellam pag. IV).

X. De Missa pro Defunctis. — Missa quaelibet pro Def., etiam exequialis, prohibetur in: eccl. et oratoriis quibuslibet temp. exposit. SSmi; Triduo sacro Maj. Hebdom.; Dom. et festis de praecep. etsi suppressis, in eccl. paroch., ubi una tantum Missa; Feriis Rog. et 25 Aprilis, ubi una Mis. et fit. processio; die 2 Febr., Fer. IV Cin. et Vig. Pent., ubi una Mis. et fiunt respectivae sacrae functiones.

Missa exequialis pro quolibet Def. unica, pro paupere etiam lecta, etsi ob rationabilem causam absente cadavere, permittitur quotidie, exceptis

tantum: Nat. Dni, Epiph., Dom Pasch., Ascens. Dni., Pent., SS. Trin., SS. Corp. Chr., S. Cordis J., Christi Regis; Immac. Concept., Annunt., Assumpt. BMV.; S. Michaëlis Arch., S. Joseph, Solemnit. S. Joseph, Ss. Petri et Pauli, OO. Sanctorum, Patronorum loci principalium, Dedic. et S. Titularis propr. eccl., ac S. P. N. Francisci.

NB. — Si externa sollemn. festor. illor. fit die Dom., Mis. exeq. prohibetur tantum die Dom.

Mis. exeq. impedita transferri potest in proximam diem, liberam a simili impedimento.

Missae aliae pro Def., cuius funus agitur, in eadem eccl. vel oratorio, praeter exequialem eadem die celebratae, prohibentur in: Dom.; dupl. 1 et 2 cl.; Oct. privil.; Comm. OO. Def.; Vig. Nat., Epiph., Pent.; Fer. IV Cin., II, III, IV Mai. Hebd.

Idem valet, si celebrandae sunt: *Missa unica* cant. vel lecta, *die 3, 7, 30*, aut *anniversaria* ab obitu vel sepultura necnon opportuniore die post acceptum nuntium mortis, — *Missa cantata* in *anniversario translato* vel extra diem obitus fundato aut quolibet anno celebrato pro Defunctis alicuius coetus, — *Missae cantatae pro Def.* infra octiduum a Comm. OO. Fid. Def., — *Missae privatae pro Def.*, cuius cadaver est adhuc in domo alicuius Congregationis seu Collegii, celebratae quotidie usque ad sepulturam in oratorio semipublico huius domus; si tamen oratorium illud locum tenet ecclesiae vel oratorii publici, unica tantum ad libitum die usque ad sepulturam.

NB. — *Missa exequialis*, die 3, 7, 30 aut anniversaria, pro def. Papa, Cardinali, Episcopo vel Sacerdote, dicitur ut in Comm. OO. Fid. Def. (*Missa I.*), cum oratione convenienti ex Orationibus diversis pro Defunctis.

In coemeterio, in ecclesia (nisi sit parochialis) vel oratorio aut in sacello sepulcreti, *Missae* quaelibet pro Def. dici possunt quotidie, exceptis tantum: Dom. et festis de praecep., etsi suppres-

sis; dupl. 1 et 2 cl.; Oct. privil.; Vig. Nat., Epiph., Pent.: Fer. IV Cin., II, III, IV Mai. Hebd.

Missae *quotidianae* pro Def. (cfr. tabellam pag. IV.) *cantatae* prohibentur in: Dom., etsi anticip.; dupl. quolibet; Oct. privil.; Vig. Nat., Epiph., Pent.; Fer. IV Cin., II, III, IV Mai. Hebdomadae. — Missae *lectae* prohibentur in: Dom., etsi anticip.; dupl. quolibet; Oct. privil.; Oct. simpl., etsi commemoratis tantum; Vig. qualibet; Fer. II Rog; Feriis IV Temp.: Fer. a 17 ad 23 Dec.; Feria, in qua prima vice occurrit Mis. Dom. impedita; Feriis Quadrag. et Pass., excepta prima die in unaquaque hebdomada libera a duplici.

De orationibus et precibus. — *Oratio de Sanctissimo.* Durante expositione dici debet or. de SSmo, in festis 1 Cl, 2 Cl, in Vig. Nativ. et Pent, in Dom. Palmar. sub una conclusione, in aliis vero sub altera conclusione, post orationes ex Rubricis, in omnibus Missis sive cantatis sive lectis in quolibet altari eiusdem ecclesiae seu oratorii, exceptis tantum, ob identitatem mysterii, Missis de Pretios. Sanguine, de SS. Redemptore, de SS. Corde, de Cruce aliisque Instrumentis Passionis, necnon in Missis votivis de Passione. (S. R. C. 11 Jan. 1928, § 3).

Oratio pro Antistite. In anniversario praeconizationis et consecrationis Episcopi dioecesanum dici debet *or. pro Antistite*, post orationes ex Rubricis (consulantur praescripta dioecesana).

Oratio in anniversario propriae ordinationis sacerdotalis. Post orationes ex Rubricis dici potest *or. pro seipso sacerdote* (Orationes diversae, nr. 20). Si occurrat dupl. 1 cl., Dom. Palm., Vig. Nativ. vel Pentec., oratio haec dici potest proxima die, libera a dupl. 1 cl.

Orationes imperatae a loci Ordinario dicuntur post orationes ex Rubricis, semper sub altera conclusione. Si ex Rubr. occurrit dicenda or. ad libitum, pro ipsa substitui potest imperata; si occurrit or. *Ecclesiae* vel pro Papa et imperata est pro

Papa, omitti potest or. *Ecclesiae*; si imperata *Ecclesiae*, omitti potest pro Papa.

Imperatae *ordinariae* omitti debent, si occurrit: Octava privil.; dupl. 1 vel 2 cl.; Dom. 1 vel 2 cl., Mis. vot. sollemnis; Vig. Nativ., Epiph., Pentec., Fer. IV Cin., II, III, IV Mai. Hebd.; Missa cum 4 orationibus ex Rubricis.

Imperatae *pro re gravi* simpliciter omittuntur, si occurrit: dupl. 1 cl.; Dom. Palm., Vig. Nativ. vel Pentec. — Sed non omittuntur in Mis. vot. sollemni.

Imperatae *pro re gravi, dicendae etiam in dupl. 1 cl.*, omittuntur, si occurrit: Nativ., Epiph., Coena Dni, Sabb. S., Dom. Pasch., Ascensio, Dom. Pent., SS. Trinit., SS. Corp. Chr., SS. Cordis J., Christi Regis.

Oratio: A cunctis. — Tam in officio quam in Missa in or. *A cunctis* ad litteram *N.* nominari debet Sanctus (a) Titularis ecclesiae vel publici oratorii; a nostris nominari debet *S. P. N. Franciscus*, non omisso tamen Sancto Titulari et servato ordine dignitatis.

Preces post Missam lectam, praescriptae a Leone XIII, omitti possunt: si Missa legitur cum aliqua sollemnitate, ut occasione primae Communionis, Communionis generalis, Ordinationis, pro Sponsis; si immediate post Missam fiat aliqua sacra functio seu pium exercitium, ut benedictio SSmi, concio, recitatio Rosarii, — excepta tamen distributione S. Communionis, ac Absol. gen. pro III. Ord.

Superior munere hebdomadarii fungatur: ad primas et secund. Vesp. et ad Matut. in festis: Nativ. Dni, Pasch., Ascens., Pentec.; — Immac. Conc. et Assumpt. B. M. V.; — B. N. P. Franc., Dedicat., et Titularis eccl. propr., B. M. V. Angelor.; — ad Primam in Vig. Nativ. Dni; — ad oa Off. fer. V, VI, Sabb. maj. hebdom.; — in Off. Commem. oim Defunct.; — oim FFr. dfectorum: — sepult. Religiosi.



Januarius

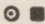
1. F. 3. **Circumcisio Domini**, 2 Cl. (OF) — 26.
A. G. Dox. hymn, et V. Prim. BMV. usq. ad A.
l. P. Nonam Vig. Epiph. — IO, Cr, Pf. et
„Cmets.“ Nativ. — In Vs. com. Bb. Bentiv.
et Ger. Cc. ON. ttm. — CD.
2. F. 4. SS. Nominis Jesu, 2 Cl. (OF) 9 l. 27.
l. P. com. Bb. Cc, et Oct. S. Stephani M. (or. A.
ppr.) — 2 or. Bb. Cc, (in priv. 3 or. Oct.)
IO, „Sequentia“, Cr, Pf. Nat. — In Vs.
com. Bb. Cc. ttm.
3. F. 5. Oct. S. Joannis Ap, spl. (OS) — 28.
(p. Sx.) 2 or. „Deus“, 3 Eccl. v. Pp, Pf. A.
Ap. — Vs. sq. (a cap. e Ld. Ss. Innoc.).
4. F. 6. Oct. SS. Innocentium, spl. (OS) — (p. 29.
Sx.) Gl, 2 or. „Deus“, 3 Eccl. v. Pp. Pf. Nat. R.
— Vs. sq. com. S. Telesphori PM. — CD.
5. Sab. Vigil. Epiphan. (privil.), 2 Cl. sdx. 30-
(OF) ut ibi, com. S. PM. — (p. Nn.) 2 or. A.
S. PM, 3 „Deus“, IO, Cr, Pf. Nat. — Vs.
sq. — Dox. et V. Prim. propr. per Oct.
Bened. Convent. — Bened. mensae ppr. per Oct.
6. **Dom.** (vacat) **Epiphania Domini**, 1 cl. 1.
A. G. cum Oct. privil. (OF) ut ibi. — IO, Cr, Pf. A.
l. P. et „Cmets“. ppr. per Oct. — In Vs.

7. F. 2. Dies 2 Oct, sdx. (OF) L1N. de „Ep. ad 2.
Rom.“ — 2 or. „Deus“, 3 Eccl. v. Pp, IO, A.
Cr. etc. ut in Festo. — Vs. ut ibi.
8. F. 3. Dies 3 Oct., sdx. (OF) ut ibi. — Mis. 3.
ut die 7. A.
9. F. 4. Dies 4 Oct, sdx. (OF) ut ibi. 4. A.
10. F. 5. Dies 5 Oct, sdx. (OF) ut i i. — In 5.
Vs. com. S. Hygini P. M. A.
11. F. 6. Dies 6 Oct, sdx. (OF) com. S. PM. — 6.
2 or. S. PM, 3 „Deus“, IO, Cr. etc. ut in A.
Festo. — Vs. sq. (ppr.) com. Oct. („Ad-
moniti“) et Dom. („Remansit“) — Dox.
et V. Prim. ppr.
12. Sab. S. Familiae Jesu Mar. Jos., dxM. 7.
(OF) com. Dom, et Oct. („Manifeste“) — A.
2 or. Dom, 3 Oct, IO, Cr. etc. Epiph. —
Vs. sq (Vs. I Epiph.), or. ppr, com. pre,
et Dom. („Fili“, V. „Omnes“).

13. **Dom.** 1 p. Ep. Octava Epiph, dxM. (OF) 8.
L1N. „Inc. Ep. I. Cor.“ RR. Oct. — IO, A.
Cr, Pf. „Cmcts“ Epiph. — In Vs. com.
sq. „O Doct“, et S. Felicis M. — CD.
Suffr. pro defetis parentib. Fratrum.
14. F. 2. S. Hilarii ECD, dx. (OM) 9 l. com. 9.
S. M. — 2 or. S. M, Cr, Pf. cnis. — Vs. A.
cap. sq. (m. t. v.) com. pre, et S. Mauri
Abb. (V. „Os iusti“).
15. F. 3. S. Pauli Erem, dx. (OM) 9 l. com. 10.
S. Abb. — 2 or. S. Abb. — Vs. sq. com. A.
pre, et S. Marcelli PM.

16. F. 4. Ss. Berardi et Soc. Mm. ON, dxM. 11.
l. p. (OM) 8 R. „Haec,“ 9 l. com. S. PM. — 2 or. R.
S. PM. — In Vs. com. sq, et S. PM.
17. F. 5. S. Antonii Abb, dx. (OM) — Vs. sq. 12.
(OF) com. S. Pauli Ap, prc, et S. Priscæ A.
VM. — CD.
18. F. 6. Cathedrae S. Petri Rom, dxM. (OF) 13.
Conf. P, 9 l. VM, com. S. Pauli Ap, et A.
S. VM. — 2 or. S. Pauli, 3 S. VM, Cr,
Pf. Ap. — In Vs. com. S. Pauli Ap, sq,
Ss. Marii Mm, et S. Canuti M.
19. Sab. B. Bernardi a Corl. CON, dx. (m. 14.
l. p. t. v, OM) 9 l. com. Ss. Mm, et S. M. — A.
2 or. Ss. Mm, 3 S. M. — Vs. sq. com.
prc, et Ss. Fabiani Mm.

20. **Dom.** 2 p. Ep. De ea, sdx, com Ss. Mm. — 15.
2 or. Ss. Mm, Cr, Pf. Trin. — In Vs. com. Vir.
sq. (ppr.) et Ss. Mm.
21. F. 2. S. Agnetis VM. dx, Mat. (ps. ut ibi) 16.
et Ld. ppr, (OF), Hor. (OM) — In Vs. R.
ppr. (ps. ut ibi, OF) com. sq. — CF.
22. F. 3. Ss. Vincentii et Anastasii Mm, sdx, 17.
☉ ■ (OM) suf; ad Prm. prec. — 2 or. „Deus R.
q s,“ 3 Eccl. v. Pp. — Vs. cap. sq. (m.
t. v.) com. prc, et S. Emerent. VM, suf.
— Compl. prec.
23. F. 4. S. Raymundi de Pen. C, sdx, (OM) 18.
☉ ■ 9 l. com. S. VM, suf; prec. ad Prm. — A.
2 or. S. VM, 3 „Deus“. — Vs, sq. com. prc.
24. F. 5. S. Timothei EM, dx. (OM) — Vs. sq. 19.
(OF) com. S. Petri Ap, et prc. — CD. R.

25. F. 6. Conversio S. Pauli Ap. dxM. (OF) 20. com. S. Petri. — 2 or. S. Petri, Cr, Pf. A. Ap. — In Vs. com. S. Petri, et sq. — CD.
26. Sab. S. Polycarpi EM, dx. (OM) — Vs. 21. sq. com. prc, et S. Joannis Chrys. ECD. R. „O Doct.“
-
27. **Dom.** 3 p. Ep. De ea, sdx, com. S. ECD. 22. — 2 or. S. ECD, Cr, Pf. Trin. — In Vs. Vir. com. sq, S. ECD, et S. Agnetis VM. (ppr.).
28. F. 2. Bb. Rogerii, Odorici et Aegidii Cc. 23.  O. N. sdx. (OM) 9 l. com. S. VM, suf; ad A. Prm. prec. — 2 or. S. VM, 3 „Deus q. s.” — Vs. sq. (m. t. v, „O Doctor“) com. prc.
29. F. 3. S. Francisci Salesii ECD, dx. (OM) 24. — Cr. — Vs. sq. com. prc, et S. Marti- A. nae VM.
30. F. 4. S. Hyacinthae de Marisc. V. 3. O, 25. l. p. dxM. (OM) 9 l. com. S VM. — 2 or. S. A. VM. — In Vs. com. sq, et S. VM.
31. F. 5. S. Petri Nol. C, dx. (m. t. v, OM) 26. l. p. — Vs. cap. sq. com. prc. A.

Februarius

1. F. 6. S. Ignatii EM, dx. (OM) — Vs. sq. 27. (OF) com. prc. — Dox. et V. Prm. BMV. R. Cras ante Miss. sol. bened. candel. et process. (viol).

2. Sab. **Purificatio BMV.** 2 Cl. (OF) — 28.
 A. G. IO, Cr, Pf. Nativ. — In Vs. com. sq, et A.
 l. p. B. Matthaei EC. ON. ttm. — Post. Compl.

Ave Regina.

Cras. bened. candel. et pomorum S. Blasii.

3. **Dom.** 4 p. Ep. De ea, sdx, com. B. EC, 29.
 et S. Blasii EM, suf; „Quicumq“, prec. — Vir.
 — 2 or. B. EC, 3 S. EM, Cr, Pf. Trin. —
 In Vs. com. sq, B. EC, et S. Andreae
 Cors. EC. (V. „Elegit“).
4. F. 2. S. Iosephi a Leon. CON, dxM 1.
 l. p. (OM) 9 l. com. S. EC. — 2 or. S. EC. — A.
 Vs. cap. sq. com. prc, S. Agathae VM.
 (ppr.), et S. EC.
5. F. 3. Ss. Petri Bapt. et Soc. Mm. ON, 2.
 l. p. dxM. (OM) 8 R. „Haec“, 9 l. com. S. VM. R.
 — 2 or. S. VM. — In Vs. com. sq, S. VM,
 et S. Dorotheae VM.
6. F. 4. S. Titi EC, dx. (m. t. v, OM) 9. l. 3.
 com. S. VM. — 2 or. S. VM, 3 pro Pp. A.
 (Anniv. Election.) — Vs. cap. sq. (m. t.
 v.) com. prc.
7. F. 5. S. Romualdi Abb, dx. (OM) — Vs. 4.
 cap. sq. (m. t. v.) com. prc. A.
8. F. 6. S. Joannis de Matha C. dx. (OM) 5.
 — Vs. cap. sq. (m. t. v.) „O Doct“, com. A.
 prc, et S. Apolloniae VM.
9. Sab. S. Cyrilli Alex. ECD, dx. (OM) 9 l. 6.
 com. S. VM. — 2 or. S. VM, Cr. — Vs. A.
 sq. com. prc, et S. Scholasticae V.

10. **Dom.** 5 p. Ep. De ea, sdx, com. S. V. 7.
— 2 or. S. V, Cr, Pf. Trin. — In Vs. com. Vir.
sq, (ppr.) et S. V. — Dox. et V. Prm. BMV.
11. F. 2. Apparitio BMV, dxM. (OF) — Cr, 8.
Pf. *In Concept. Immac.* — In Vs. com. A.
sq. (ppr.)
12. F. 3. Ss. Septem Fundatorum, Cc, dx. 9.
(OM) L. 3 N. Abb; RR. etc. de plur. Cc. A.
praeter ppria. — 2 or. p. Pp. (Anniv.
Coron.) — In Vs. com. sq.
13. F. 4. B. Eustochii V. 2. O, sdx. (OM), suf; 10.
◎ ■ prec. — 2 or. „A cunct,“ 3 ad lib. — Vs. A.
cap. sq. com. prec, et S. Valentini M, suf.
— Compl. prec.
- Dioec. Premisl.** Vs. sq. (OF) ttm. — Ibi cras R.
S. Valentini M, Patr. dioec., 1 Cl. (OF), L. 1N.
1^o lo. plur. Mm, 2 N. 1^o lo. un. M, 3 N. 3^o lo. un.
M, com. Bb. Andreae Cc, — (2 or. Bb. Cc. in lect).
IO, Cr. — In Vs. ttm.
14. F. 5. Bb. Andreae, Rizzerii et Antonii 11.
◎ ■ Cc. ON, sdx. (OM) com. S. M, suf; ad A.
Prm. prec. — 2 or. S. M, 3 „A cunct.“
— In Vs. com. sq, suf. — Compl. prec.
15. F. 6. Ss. Faustini et Jov. Mm, spl. (OS), 12.
◎ ■ (*Prem. dioec.*: „Inc. ad Titum“) suf; prec. R.
— (p. Sx.) 2 or. „A cunct,“ 3 ad lib. —
Vs. sq. (e Psalt. fer. 6, or. Dom. VI p. Ep.)
com. B. Philippae V, suf. — CF, prec.
16. Sab. De Dom. VI p. Ep, sdx, ps. de Sab; 13.
L. 1 „Inc. ad Philemon,“ L. 2 et 3 „Inc. Vir.
ad Hebr.“ e Dom. VI; RR, LL, ant. ad
Bened, et or. de Dom. VI p. Ep, com. B. V,

suf; ad Prm. „Regi,“ prec. — Gl, 2 or. B. V, 3 „A cunct,“ Cr, Pf. Tr. — Vs. sq. com. B. V, et B. Lucae CON, suf; „Ben. Dno“ cum 2 Allel. — A Compl. „Laus Tibi Dne“, ad fer. IV Mai. hebdom; prec.

17. **Dom. Septuagesimae.** De ea, 2 Cl. sdx, 14. Ld. 2^o lo, ant. Ld. et Hor. ppr, com. V. B. C, suf; ad Prm. ps. „Dnus regn., Jubilate“, prec. — sine Gl, 2 or. B. C, 3 „A cunct,“ IO, Cr, Pf. Tr, Ben. Dno. — In Vs. com. sq, et B. C, suf. — Compl. prec.
— In Missis usq. ad Dom. Palm. post. „Graduale“ omittuntur „Alleluja“ cum Versu, et dicitur „Tractus“.
Suffr. pro defctis FFr. et Benefact.
18. F. 2. S. Simeonis EM, spl. (OS) suf; ad 15. ☉ ■ Prm. prec. — (p. Sx.) 2 or. „A cunct,“ R. 3 ad lib. — Vs. sq. ttm.
19. F. 3. S. Conradi C. 3. O, dxM (OM) — In 16. Vs. com. sq. A.
20. F. 4. B. Petri a Treja CON, sdx. (m. t. v, 17. ☉ ■ OM), suf; prec. — 2 or. „A cunct,“ 3 ad A. lib. — In Vs, suf. — Compl. prec.
21. F. 5. De ea, spl. Abs. et Ben. 1 N, sine 18. ☉ ■ „Te Deum“, Ld. 2^o lo, suf; ad Prm, 4 ps. V. „Pacem,“ prec. — Mis. (Conv. p. Prm. pro defctis, cum „Seq.“) Dom. prc, sine Gl, 2 or. „A cunct,“ 3 „Fidelium“, 4 ad lib, sine Tract, sine Cr, Pf. cnis, Ben. Dno. — Vs. sq. ut ibi, com. S. Petri Ap, et S. Pauli.
22. F. 6. S. Margaritae a Cort, 3. O, dxM. 19. l. p. (OM) et ut ibi, 9 l. com. S. Petri Ap, et A.

S. Pauli Ap. — or. ut in Ld, Cr, Pf. Ap, UE. S. Petri. — In Vs. com. sq, „O Doct,“ S. Petri, et S. Pauli.

23. Sab. (Vig.) S Petri Dam. ECD, dx. (m. t. v, 20. OM) 9 l. com. Vig. — 2 or. UE. Vig. — A. Mis. Conv. (p. Nn.) de Vig. (viol.), sine Gl, 2 or. diei, 3 „Concede“, Pf. cnis, Ben. Dno. — Vs. sq. com. prec.

24. **Dom. Sexages.** De ea, 2 cl. sdx, Ld. 21. 2^o lo, ant. Ld. et Hor. ppr, suf; ad Prm. V. ps. ut ibi, prec. — sine Gl, 2 or. „A cunct,“ 3 ad lib, IO, Cr, Pf. Tr, Ben. Dno. — Vs. sq. com. prec, et B. Isabellae V.
25. F. 2. S. Matthiae Ap, 2 Cl. (OF) 9 l. com. 22. B. V. — 2 or. B. V, IO, Cr, Pf. Ap. — In R. Vs. com. B. V.
26. F. 3. De ea, spl, Abs. et Ben. 2 Noct, sine 23. ☉ ■ „Te Deum“, Ld. 2^o lo, suf; ad Prm. 4 ps, V. „Pacem,“ prec. — (p. Sx.) Mis. Dom. prec, sine Gl. 2 or. „A cunct,“ 3 ad lib, sine Tract, sine Cr, Pf. cnis, Ben. Dno. — In Vs, suf. — Compl. prec.
27. F. 4. De ea, spl, ps. 7—9 2^o lo, Abs. et 24. ☉ ■ Ben. 3 Noct, rel. ut heri. — Vs. sq, suf. — V. Compl. prec.
28. F. 5. B. Antoniae a Flor. Vid, 2. O, sdx. 25. ☉ ■ (OM), suf; prec. — or. ut 20. — In Vs, A. suf. — Compl. prec.

Martius

1. F. 6. De ea, spl; ut 26 Febr. — Vs. sq, 26.
 ☉ ■ V.
 A. G. suf. — Compl. prec.
2. Sab. B. Agnetis Prag. V. 2. O, sdx. (OM), 27.
 ☉ ■ suf; prec. — 2 or. „A cunct,“ 3 ad. lib. — A.
 Vs. sq. com. prc, suf. — Compl. prec.

3. **Dom. Quinquages.** De ea, 2 Cl. sdx; 28.
 ant. ad Ld. (2^o lo.) et Hor. ppr, suf; ad V.
 Prm. ps. ut ibi, prec. — sine Gl, 2 or.
 „A cunct,“ 3 ad lib, IO, Cr, Pf. Tr, Ben.
 Dno. — In Vs. com. sq, et S. Lucii PM,
 suf. — Compl. prec.
Nowe Miasto: Vs. sq. (OF) com. prc. — CD.
4. F. 2. S. Casimiri C, sdx. (OM) com. S. PM, 29.
 ☉ ■ suf; prec. — 2 or. S. PM, 3 „A cunct,“ A.
 — Vs. sq. com. prc.
Nowe Miasto: ... 1 Cl (OF) L. 1N. „Justus”,
 — I. O, Cr. — In Vs. com. sq. — CD.
5. F. 3. S. Joannis Jos. CON, dxM. (OM), — 30.
 l. p. In Vs, com. S. Coletae V. (praeter *Felic.* et A.
Sor. 2 Ord.), ac Ss. Perpetuae Mm. (ppr.).
 Cras benedictio cinerum.
6. F. 4. **Cinerum**, de ea, 1 Cl. spl, ps. III 1.
 l. p. N. et Ld. 2^o lo, prec. flexis genib. ad oes V.
 Hor, com. S. V, et Ss. Mm; ad Prm. 4 ps.
 „Pacem.“ — sine Gl, 2 or. S. V, 3 Ss.
 Mm, IO, **Pf. Quadr, quotidie**, or. sup.
 pop, Ben. Dno. — Vs. sq. „O Doct,“ com.
 S. V, Ss. Mm, et fer.

Missa Convent. temp. Quadrag.
(p. Nn.) **ut pag. V., II, 2**, quotidie; exceptis festis 1 et 2 Cl.

Apud Felic. et Sor. 2 Ord.: Vs. sq. (OF) com.
S. Thomae Aquin. „O Doct.“ et fer. — CD.

7. F. 5. S. Thomae Aquin. CD, dx. (OM) L. 2
1N. 1^o lo. D, 9 l. com. fer. — 2 or. fer, A.
Cr, UEF. — Vs. cap. sq. com. prc, et fer.

Ap. Fel.: S. Coletae V. 2. O, 2 Cl. — **ap. Sor.** A.
2 Ord.... 1 Cl, (OF) L. 1N 1^o lo, 9 l. fer, com.
S. CD, ac fer. — 2 or. S. CD, 3 fer, IO, Cr, Pf.
Q, UEF. — In Vs. com. S. CD, sq, et fer. — CD.

8. F. 6. S. Joannis de Deo, C. dx. (OM) L1N. 3.
„Beatus“, 9 l. com. fer. — 2 or. UEF. — A.
Vs. sq. com. prc, S. Franciscæ Vid, et fer.

9. Sab. S. Catharinae Bonon. V. 2. O, dxM. 4.
l. p. (OM) L1N. 1^o lo, 9 l. fer, com. S. Vid. A.
(V. „Specie“), et fer. — 2 or. S. Vid, 3
fer, UEF. — Vs. sq. com. prc, Ss. Qua-
drag. Mm, et S. Vid. (V. „Specie“).

Vesp. ab hodie usq. ad Sabb. S., exclus. Dom.,
dic. ante meridiem. — Sabbato ad meridiem
„Angelus Domini“ stando.

10. **Dom. I Quadrag.** De ea, 1 Cl. sdx; 5.
ad Ld. (2^o lo) et Hor. ant. ppr, com. Ss. V.
Mm, suf; ps. Prm. ut ibi, prec. — (p. Tt.)
sine Gl. 2 or. Ss. Mm, 3 „A cunct“, IO,
Cr, Pf. Qu, Ben. Dno. — In Vs. com. sq,
et Ss. Mm, suf. — Compl. prec.

11. F. 2. B. Christophori a Med. CON, sdx. 6
■ (OM) L1N. „Beatus“, 9 l. com. fer, suf; A.

- Prm. prec. — 2 or. fer, 3 „A cunct“, UEF. — Vs. sq. „O Doct.“ com. prc, et fer.
12. F. 3. S. Gregorii PCD, dx. (OM) L1N. 7. 1^o lo. D, 9 l. com. fer. — 2 or. fer, Cr, A. UEF. — In Vs. com. sq, et fer.
13. F. 4. (Q. T.) B. Agnelli a Pisis CON, sdx. 8. (OM) L1N. „Justus“, 9 l. com. fer, suf; A. prec. — 2 or. fer, 3 „A cunct“, UEF. — In Vs. com. fer, suf. — Compl. prec.
14. F. 5. De ea, spl, Ld. 2^o lo, prec. fer. (flex. 9. gen.) ad oes Hor, suf; ad Hor. ant. ppr; V. Prm. 4 ps. „Pacem.“ — sine Gl. et Cr, or. ut ibi, or. sup. pop, Ben. Dno. — In Vs. prec. fer, suf. — Compl. prec. fer.
15. F. 6. (Q. T.) De ea, spl; ut heri. — Vs. 10. fer, prec. fer, suf. — Compl. prec. fer. V.
16. Sab. (Q. T.) De eo, spl; ut heri. — Vs. 11. sq. com. S. Patricii EC. V.
-
17. **Dom. II Quadrag.** De ea, 1 Cl. sdx; 12. ad Ld. (2^o lo.) et Hor. ant. ppr, com. S. V. EC; ps. Prm. ut ibi. — (p. Tt.) sine Gl, 2 or. S. EC, IO, Cr, Pf. Q, Ben. Dno. — In Vs. com. sq. „O Doct“, et S. EC.
18. F. 2. S. Cyrilli Hier. ECD, dx. (OM) L. 13. 1N 1^o lo. D, 9 l. com. fer. — 2 or. fer, A. Cr, UEF. — Vs. sq. (OF) com fer. — CD.
19. F. 3. **S. Joseph Sp. BMV**, 1 Cl. (OF) 14. A. G. 9 l. com. fer. — (Prohib. Mis. priv. de A. l. P. feria) — (p. Tt.) 2 or. fer, IO, Cr, Pf. ppr, UEF. — In Vs. com. sq, et fer. — CD.

20. F. 4. Bb. Joannis et Marci Cc. ON, sdx. 15.
 ■ (OM), L. 1 et 3 N. de plur. Cc, 9 l. com. A.
 fer, suf; prec. — 2 or. fer, 3 „A cunct”,
 UEF. — Vs. sq. com. prc, et fer.
21. F. 5. S. Benedicti Abb, dxM. (OM) L1N. 16.
 2^o lo. CP, 9 l. com. fer — 2 or. UEF — A.
 Vs. cap. sq. com. prc, et fer.
22. F. 6. S. Benvenuti EC. ON, dxM. (OM) 17.
 l. p. L1N. 1^o lo, 9 l. com. fer. — 2 or. UEF. A.
 — In Vs. com. sq.
23. Sab. De eo, spl, Ld. 2^o lo, prec. fer. ad 18.
 oes Hor, suf; Prm. 4 ps. „Pacem”. — V.
 sine Gl. et Cr, or. ut ibi, or. sup. pop,
 Ben. Dno. — Vs. sq. com. S. Gabrielis
 Archang.
-
24. **Dom. III Quadrag.** De ea, 1 Cl. sdx; 19.
 ad Ld. (2^o lo.) et Hor. ant. ppr, com. S. V.
 Arch.; ps. Prm. ut ibi. — (p. Tt.) sine
 Gl, 2 or. S. Arch, IO. Cr, Ben. Dno, UE.
 S. Archang. — Vs. sq. com. Dom. ttm.
 — Dox. et V. Prm. BMV.
- Missa Convent. temp. Quadrag.**
 (p. Nn.) **ut pag. V. II, 2**, quotidie; excep-
 tis festis 1 et 2 Cl.
25. F. 2. **Annuntiatio BMV**, 1 Cl. (OF) 9 l. 20.
 A. G. com. fer. — 2 or. fer, IO, Cr, Pf. BMV, A.
 l. p. UEF. — In Vs. com. sq, et fer. — CD.
26. F. 3. B. Didaci Jos. CON, dx. (m. t. v, 21.
 l. p. OM) L1N. „Justus“, 9 l. com. fer. — 2 or. A.
 UEF. — Vs. cap. sq. (m. t. v.) „O Doct,”
 com. prc, et fer.

27. F. 4. S. Joannis Damasc. CD, dx. (OM) 22.
L1N. 1^o lo. D, 9 l. com. fer. — 2 or. fer, A.
Cr, UEF. — Vs. sq. (m. t. v.) com. pre,
et fer.
28. F. 5. S. Joannis a Capistr. CON, dxM, (OM) 23.
l. p. L1N. „Beatus“, 9 l. com. fer. — 2 or. A.
UEF. — In Vs. com. sq.
29. F. 6. De ea, spl, Ld. 2^o lo, prec. fer. ad 24.
■ oes Hor. (flex. gen.), suf; Prm. 4 ps. V.
„Pacem“. — sine Gl. et Cr, or. ut ibi, or.
sup. pop, Ben. Dno. — Vs. sq. com. fer.
30. Sab. S. Petri Regal. CON, dxM. (e 13 25.
l. p. Maii, OM) L1N. „Beatus“, 9 l. com. fer. A.
— 2 or. UEF. — Vs. sq. com. pre.
-
31. **Dom. IV Quadrag.** De ea, 1 Cl. sdx; 26.
ad Ld. (2^o lo) et Hor. ant. ppr, suf; ps. V.
Prm. ut ibi, prec. — (p. Tt.) sine Gl, or.
ut ibi, IO, Cr, Pf. Q, Ben. Dno. — In Vs.
suf. — Compl. prec.

Aprilis

1. F. 2. De ea, spl; Ld. 2^o lo, prec. fer. ad 27.
■ oes Hor, suf; ad Prm. 4 ps, „Pacem“. — V.
sine Gl. et Cr, or. ut ibi, or. sup. pop,
Ben. Dno. — Vs. sq. com. fer.

2. F. 3. S. Francisci de P, C, dx. (OM) L1N. 28.
„Beatus“, 9 l. com. fer. — 2 or. UEF. — A.
In Vs. com. sq, et fer.
3. F. 4. Bb. Gandulphi et Joan. Cc. ON, sdx. 29.
(OM) L1N. et 3 de Cc, 9 l. com. fer, suf; A.
ad Prm. prec. — 2 or. fer, 3 „A cunct“,
UEF. — Vs. sq. com. prec, S. Isidori ECD.
„O Doct“, et fer.
4. F. 5. S. Benedicti a S. Phil. CON, dxM. 1.
l. p. (OM) L1N. „Beatus“, 9 l. fer, com. S. ECD, A.
et fer. — 2 or. S. ECD, 3 fer, Cr, UEF.
— In Vs. com. sq, S. ECD, et fer.
5. F. 6. S. Vincentii Ferr. C, dx. (OM) L1N 2.
„Beatus“, 9 l. com. fer. — 2 or. UEF. — A.
In Vs. com. fer.
6. Sab. De eo, spl, Ld. 2^o lo, prec. fer. flex. 3.
gen. ad oes Hor, suf; Prm. 4 ps, „Pacem.“ V.
— sine Gl. et Cr, or. ut ibi, Pf. Q, or. sup.
pop, Ben. Dno. — Vs. sq. — Compl. prec.

Velantur Cruces (ad fer. VI in Parasc.) et
Imagines (ad Sab. Sanct.) — Cessant suffr. usq.
ad fest. SS. Trinit. — Temp. Pass. in Off. de
feria omit. „Gloria Patri“ ad Invitator, in RR.
noct. et RR. br. Horar. ac Compl.; in Miss. de
feria omit: ps. *Judica me*, „Gloria Patri“ ad
Introit, ad *Lavabo*, et ad *Asperges* in his 2
Domin.

7. **Dom. Passionis.** De ea, 1 Cl, sdx, ad 4.
Ld. (2^o lo) et Horas ant. ppr; ad Prm. V.
ps. ut ibi prec. — (p. Tt.) sine Gl, 2 or.
Eccl. v. Pp, IO, Cr, Pf. Cruc. quotidie,
nisi aliter notetur, Ben. Dno. — In Vs. —
Compl. prec.

Missa Conv. temp. Pass. (p. Nn.)
ut pag. V, II. 2. quotidie; exceptis
 festis 1 et 2 Cl.

8. F. 2. De ea, spl; Ld. 2^o lo, prec. fer. (flex. 5.
 ■ gen.) ad oes Hor; ad Hor. ant. ppr; ad V.
 Prm. 4 ps. „Pacem.“ — sine Gl. et Cr,
 2 or. Eccl. v. Pp, Pf. Crc, Ben. Dno. —
 Vs. sq. com. fer. — Compl. prec.
9. F. 3. B. Thomae a Tol. MON, sdx. (OM) 6.
 L1N 1^o lo. plur. Mm, 9 l. com. fer; ad R.
 Prm. prec. — 2 or. UEF. — Vs. cap. sq,
 com. prc, et fer. — Compl. prec.
10. F. 4. B. Marci a Bon. CON, sdx. (OM) 7.
 L1N, „Beatus,“ 9 l. com. fer; ad Prm. A.
 prec. — 2 or. UEF. — Vs. sq. (m. t. v.)
 „O Doct.“ com. prc, et fer.
11. F. 5. S. Leonis PCD, dx. (OM) L. oes 8.
 ppr, 9 l. com. fer. — 2 or. UEF, Cr. — A.
 Vs. sq. (ppr.) com. prc, B. Angeli a Clav.
 CON, et fer. — Dox. et V. Prm. ppr.

Łomża. Vs. sq. com. fer. ttm.

12. F. 6. Septem Dolorum BMV, dxM. (OF) 9.
 9 l. fer, com. B. CON, et fer. — 2 or. B. A.
 C, 3 fer, Seq, Cr, Pf. BMV, UEF. — (vel
 Mis. fer. [viol.] 2 or. BMV, 3 B. C, Pf.
 Crc, Ben. Dno, UE. BMV.) — In Vs. com.
 sq, B. C, et fer. — CD.

Łomża:... 1 Cl. (OF) ut supra. — (p. Tt.)
 (2 or, in priv. B. C.) 3 or. fer, Seq, Cr, Pf.
 BMV, UEF. — (Mis. fer. prohib.) — In Vs. com.
 sq, et fer. ttm. — CD.

13. Sab. S. Hermenegildi M, sdx, (OM, hymni 10. ppr.) L1N. 1^o lo. plur. Mm, 9 l. com. fer; R. ad Prim. prec. — 2 or. UEF. — Vs. sq. com. prc, S. Justini M, et Ss. Tiburtii Mm.
Cras ante Mis. Conv., post aspers, bened. palmarum et processio. — Passio in Mis. solemni (cum cantorib.) leg. in cornu Epist., in priv. in cornu Evang. — Prohib. seq. dieb. Mis. vot. et Req.
-
14. **Dom. Palmarum.** De ea. 1 Cl. sdx, ad 11. A. G. Ld. (2^o lo.) et Hor. ant. ppr; com. S. M, V. et Ss. Mm; ad Prm. ps. ut ibi. — (p. Tt.) sine Gl, or. un, IO, Cr, Pf. Crc, Ben. Dno; in rel. Mis. UE. ex bened. palm. — In Vs. com. S. M.
15. F. 2. Maior. hebd, spl, Of. ut ibi, prec. 12. A. G. fer. ad oes Hor. (flex. gen.) ad Prm. 4 ps. V. „Pacem“. — sine Gl, 2 or. Eccl. v. Pp, IO, Pf. Crc, or. sup. pop, Ben. Dno. — In Vs. prec. fer, com. Solemnit. SPN. Franc. ppr, et S. Bened. Jos. C. — Compl. prec. fer.
16. F. 3. Mai. hebd, spl, Of. ut ibi, prec. fer. 13. A. G. ad oes Hor, com. S. P. Franc, et S. C; V. Prm. ut heri. — sine Gl, 2 or. S. P. Franc, 3 S. C, IO, etc. ut heri. — In Vs. prec. fer, com. S. PN. Franc, et S. Aniceti PM. — Compl. prec. fer.
17. F. 4. Mai. hebd, spl, Of. ut ibi, prec. fer. 14. A. G. ad oes Horas, com. S. PM; ad Prm. 4 ps. V. „Pacem“. — sine Gl, 2 or. S. PM, IO, Pf. Cruc. etc. ut fer. II. — In Vs. prec. fer. — Compl. prec. fer.

In hoc Triduo sacro: matut. tenebr. etc. rit. dx. ut ibi; — Martyrol. non leg.; — bened. mensae ppr. — Cras consecr. tres Hostiae; dicto *Gloria in exc. puls. campan*, post. silent ad Sab. S.; post Mis. process. ad sacell., ibi Vs.; Vs. absol. denudatio altar. in col. viol. — Dillig. leg. Caerem. Rom. Seraph.!

18. F. 5. in Coena Domini, 1 Cl, ut ibi, Ld. 15.
 A. G. 2^o lo. — sine „Judica“, Gl, or. un, Cr, A. Pf. Cruc, *Cmcts*, *Hanc*, *Qui prid.* ppr. — Vs. dx.
19. F. 6. in Parasceve, 1 Cl, ut ibi, Ld. 2^o lo. 16.
 A. G. — Leg. Passio, ador. Cruc, process. de N. Sacel, Mis. Praesanctf; ad „Orate fratr.“ nih. dic.; process. ad Sepulchr, ibi Vs.
20. Sab. Sanctum, 1 Cl, Ld. 2^o lo, *Ego dixi* 17.
 A. G. — (Bened. ign. ac cer. Pasch, Prophet, A. Lit. OO. Ss.) — Mis. ut ibi, *Judica* cum Glor, ad Gl. puls. camp, postea silent ad Resurr. — S. Commun. ttm. in Mis. v. statim post eam. — Vs. ppr. — Ant. **Regina Coeli.**

Bened. mensae ppr. — Ad Aspers. *Vidi aquam.* — Post distrib. S. Commun. toto temp. Pasch. dic. *Allel.* ad ant. et V. (nisi in nigr.), or. *Spiritum nobis* (long. conclus.)

21. **Dom. Resurrectionis**, 1 Cl. cum Oct. 18.
 A. G. privil. (OF) Ad Ld. et Vs. Ben. Dno. cum A. 2 Allel. ad Sab. In Martyrol. ante lunam leg.: *Hac die* etc. — IO, Seq, Cr, Pf. „Cmcts“, „Hanc“ ppr, Ite mis. cum 2 Allel. ad Sab. inclusive. — Vs. ut ibi.
22. F. 2. Pasch, 1 Cl. (OF) — Mis. ut ibi. — 19.
 Vs. ut ibi. A.

23. F. 3. Pasch. 1 Cl. (OF) — In Vs. 20.
A.
24. F. 4. infr. Oct, sdx. (OF) — 2 or. Eccl. 21.
l. p. v. Pp, IO. etc. ut die Dom. — In Vs. A.
- Cras process. S. Marci; Missa Rogation. (p. Nn;
e fer. 2 p. Dom. 5), viol, sine Gl, 2 or. Con-
cede, 3 Eccl. v. Pp, Pf. etc. de Oct, Ben. Dno
sine, „Allel.“ — Si in eccl. una Missa: 2 or.
Oct. (sine 3) UE. Oct. — Lit. OO. SS. obliga-
toriae et neq. anticipari.
25. F. 5. infr. Oct, sdx. (OF) — 2 or. Eccl. 22.
v. Pp, IO. etc. ut die Dom. — In Vs. A.
com. Ss. Cleti Pp. Mm. (temp. Pasch.)
26. F. 6. infr. Oct, sdx. (OF) com. Ss. Pp. 23.
Mm. — 2 or. Ss. Pp. Mm, IO. etc. ut die A.
Dom. — In Vs. com. S. Petri Can. CD.
„O Doct,“ et Ss. Pp. Mm.
27. Sab. in Albis, sdx. (OF) com. S. CD. 24.
— 2 or. S. CD, IO. etc. ut die Dom. — A.
Vs. sq. ut ibi, com. S. Pauli C, S. CD, et
S. Vitalis M. — CF. — Dox. et V. Prm.
ppr. ad Ascens.
-
28. **Dom. in Albis**, 1 Cl. dxM. (OF) com. 25.
l. p. S. C, et S. M. — 2 or. S. C, 3 S. M, IO, A.
Cr, Pf. Pasch. quotidie ad Ascens. — Vs.
sq. com. Dom. ttm.
In Off. addit. „Allel.“ ad Invitat., antiph. etc.;
— In Miss. add. 2 „Allel.“ ad Introit, unum ad
Offert. et Communion.
29. F. 2. **S. Adalberti E. M**, Patr. Prov. 26
1 Cl. cum Oct. comm. residua (e 23; OF; R.
ppr.) com. S. Petri M. — (2 or. in priv.

S. M.), IO, Cr, Pf. Pasch. — In Vs. com. sq, et B. Benedicti CON. ttm.

Archidioec. Leopold.: In Vs. com. sq. ttm.

30. F. 3. S. Marci Ev, 2 Cl. (e 25; OF) 9 l. 27. l. p. e trib. oct. S. Adalb, com. oct, B. CON. R. et S. Catharinae Sen. V. — 2 or. oct, 3 B. CON, 4 S. V, IO, Cr, Pf. Ap. — Vs. cap. sq. (ppr.)com. prc, oct, et B. CON.

Archid. Leop. Dedicatio Eccl. Cathedr, 1 Cl. A. (e 21; OF) com. oct. S. Adalb, B. Bened. CON, S. Cathar. V. — (2 or. in priv. oct, 3 B. CON, 4 S. V.), IO, Cr, Pf. Pasch. — In Vs. com. sq. ttm.

Maius

1. F. 4. Ss. Philippi et Jacobi Ap., 2 Cl. 28. (OF) L1N. e Dom. IV. p. Pasch, RR. Ap. R. — IO, Cr, Pf. Ap. — In Vs. com. sq. „Ora,“ et S. Athanasii ECD. „O Doct.“ — CD.

Dioec. Plocen.: Vs. sq. (OF) com. prc. ttm. — CD.

Archid. Leop.: In Vs. com. sq, et S. Athanasii ECD. „O Doct.“

2. F. 5. S. Fidelis Protom. ON, 2 Cl. (e 24 29. Apr; OF) 9 l. com. S. ECD. — 2 or. S. R. ECD, IO, Cr, Pf. Pasch. — Vs. sq. (ppr.) com. prc, et S. ECD. — Dox. et V. Prm. BMV.

Dioec. Ploc.: S. Sigismundi RM, Patr. Eccl. R. Cath, 1 Cl. (OF) com. S. Athanasii ECD. — (2 or. in priv. S. ECD.) IO, Cr, Pf. Pasch. — In Vs. com. sq. (ppr.) — Dox. et V. Prm. BMV.

Archd. Leop. S. Marci Ev., 2 Cl. (e 25; R. OF) 9 l. com. S. ECD. — 2 or. S. ECD, IO, Cr. Pf. Ap. — Vs. sq. com. prc. — Dox. et V. Prm. BMV.

3. F. 6. BMV. Reginae Polon. 2 Cl. (OF ppr.) 30. (Ant. 3i N.) 9 l. com. Ss. Alexandri et Soc. A. Mm. — (Dioec. *Leopol. et Prem.* 1 Cl. com. Ss. Mm.) — (2 or. in priv. Ss. Mm.) IO, Cr, Pf. BMV. „in festivit“. — Vs. sq. com. prc, et S. Monicae Vid. — (*Leop. et Prem.*: In Vs. com. sq, et S. Monicae Vid.)
4. Sab. Inventio S. Crucis, 2 Cl. (e 3; OF) 1. 9 l. com. S. Vid. — 2 or. S. Vid, IO, Cr, R. Pf. Cr. — In Vs. com. sq, S. Pii PC, et S. Vid.

Dioec. Premisl.: Vs. sq. (OF) com. prc, et Dom. ttm.

-
5. **Dom. 2 p.** Pasch. De ea, sdx, L1N. e prc. 2. fer. 2, com. S. PC. — 2 or. S. PC, Cr, A. Pf. Pasch. — Vs. sq. com. prc, et S. Joannis (ppr.) — Dox. et V. Prm. BMV.

Dioec. Prem. Dedicatio Eccl. Cathedr, 1 Cl. A. (OF) 9 l. com. Dom, et S. Pii PC. — 2 or. Dom, (3 in priv. S. PC.) IO, Cr, Pf. Pasch. — In Vs. com. sq, Dom, et S. Joan. Ap. (ant. ppr.) — CD. — Dox. et V. Prm. BMV.

Archid. Leop.: Vs. sq. „Ora“ com. Dom, S. Joan. Ap. (ppr.), et S. PC.

6. F. 2. BMV. Divini Past. Matris, 2 Cl. (OF 3. in fine Apr.) 9 l. com. S. Ap. — 2 or. A. S. Ap, IO, Cr, Pf. BMV, UE. Ap. — In Vs. com. sq, et S. Ap.

Archd. Leopol.: S. Fidelis Protom. ON, 2 Cl. R. (e 24 Apr.; OF) 9 l. com. S. Ap. — 2 or. S. Ap,

IO, Cr, Pf. Pasch, UE. Ap. — In Vs. com. sq, S. Stanislai EM, et S. Ap. — Dox. et V. Prm. BMV.

Prov. Varsav, dioec. Crac. et Tarnov: In Vs. com. S. Joan Ap. ttm. — CD.

7. F. 3. S. Stanislai EM, dx. (OM) (*dioec.* 4. *Prem.* L1N. „Inc. Act. Apost.“ et RR. R. e prc. fer. 2) — Vs. sq. ttm.

Arch. Leop. BMV. Divini Past. Matris, 2 Cl. 4. (OF in fine Apr.) 9 l. com. S. EM. — 2 or. S. EM, IO, Cr, Pf. BMV. — Vs. sq. com. pre. ttm.

Prov. Vars, dioec. Crac, Tarn.: De ea, (OS. 4. de Temp. P.) spl, Abs. et Ben. 2 N, „Te Deum“, com. S. Crc; „Regi“, prec. — (p. Sx.) Mis. Dom, 2 or. „Concede“, 3 Eccl. v. Pp, sine Cr, Pf. Pasch, Ite. — Vs. sq. ttm.

8. F. 4. **Solemnitas S. Joseph** Sp. BMV, 5.

- l. P. Patr. Eccl. et Prov. Crac, 1 Cl. cum Oct. 4. comm. (OF) com. S. Mich. Archang. — (in priv. 2 or. et UE. S. Archang.) IO, Cr, Pf. ppr. per Oct. — In Vs. com. sq. ttm.

9. F. 5. Gregorii Naz. ECD, dx. (OM) com. 6. oct. — 2 or. oct, Cr, Pf. oct. — Vs. cap. A. sq. (m. t. v.) com. pre, oct, ac Ss. Gordiani Mm.

Prov. Vars, dioec. Crac, Tarn.: S. Stanislai R. EM, 1 Cl. (e 8 Maii; in *Prov. Vars.* cum residua Oct. cni.) OF. ppr, com. S. Gregorii ECD. — (2 or. in priv. S. ECD,) Cr, Pf. S. Ios. — In Vs. com sq. ttm.

10. F. 6. S. Antonini EC, dx. (m. t. v, OM) 7. 9 l. Ss. Mm, com. oct, et Ss. Mm. — 2 or. A. oct, 3 Ss. Mm, Cr, Pf. S. Jos. — In Vs. com sq, et oct.

In Prov. Vars. com. oct. S. Jos; et oct. S. EM.: in Ld, Mis. et Vs. hodie, cras, et reliq. dieb.

11. Sab. Bb. Juliani, Ladislai et Jac. Cc. ON, 8.
 ◎ ■ sdx. (OM) com. oct. — 2 or. oct, 3 „Con- A.
 cede“, Cr, Pf. oct. — Vs. sq. com. pre,
 Ss. Nerei Mm, et oct.

12. **Dom. 3.** p. Pasch. De ea, sdx, com. Ss. 9.
 Mm, et oct. — 2 or. Ss. Mm, 3 oct, Cr, A.
 Pf. Pasch. (*Vars.*: 4 or. oct, IO.) — In Vs.
 com. sq. „O Doct,“ oct, et B. Petronillae V.
13. F. 2. S. Roberti Bellar. ECD, dx. (OM) 10.
 9 l. B. V, com. oct, et B. V. — 2 or. oct, A.
 3 B. V, Cr, Pf. oct. — In Vs. com. sq,
 oct, B. V, et S. Bonifatii M.
14. F. 3. Bb. Bartholomaei et Benvenuti Cc. 11.
 ◎ ■ ON, sdx. (OM) 9 l. S. M, com. oct, et S. A.
 M. — 2 or. oct, 3 S. M, Cr, Pf. oct. — Vs.
 sq. com. pre, et S. Joannis C. (*Vars. Prov.*:
 ac oct. S. Stanislai EM; etiam cras in
 Ld, Mis, et Vs; ac 9 l. S. EM.)
15. F. 4. Octava S. Joseph, dxM. (OM) 9 l. 12.
 com. S. C. — 2 or. S. C, Cr, Pf. S. Jos. — A.
 In Vs. com. sq, et S. C.
16. F. 5. S. Ubaldi EC, sdx. (OM) com. Cruc; 13.
 ◎ ■ prec. — 2 or. „Concede“, 3 Eccl. v. Pp. A.
 — Vs. sq. com. pre.
17. F. 6. S. Paschalis CON, dxM. (OM) L3N. 14.
 l. p. ppr. — Vs. sq. „Ora“, com. pre, et S. Ve- A.
 nantii M.

Apud. Felic.: Vs. sq. (OF) „Ora“, com. pre. ttm.

18. Sab. S. Felicis CON, 2 Cl. (OF) LL. ppr, 15.
 l. p. 9 l. com. S. M. — 2 or. S. M, IO, Cr. — A.

In Vs. com. sq. S. Ivonis C, S. Petri Coel. PC, et S. M.

Ap. Fel... 1 Cl. cum Oct. comm. (de qua quotidie com. et Cr. ad diem 25) com. S. Venantii M. — (2 or. in priv. S. M.) IO, Cr. — In Vs. com. sq. S. Ivonis C, et S. Petri Coel. PC.

19. **Dom. 4.** p. Pasch. De ea, sdx, com. S. 16.
C, S. PC, et S. Pudentianae V. — 2 or. S. C, A.
3 S. PC, 4 S. V, IO, Cr, Pf. Pasch. — In
Vs. com. sq. S. C, et S. PC. (V. „Elegit“).
20. F. 2. S. Bernardini CON, dxM. (OM) L3N. 17.
l. p. ppr. — In Vs. com. sq. A.
21. F. 3. B. Crispini CON, dx. (m. t. v, OM) — 18.
In Vs. com. sq. A.
22. F. 4. Bb. Joannis et Petri Mm. ON, sdx. 19.
⊙ ■ (OM) com. S. Cruc; prec. — 2 or. „Con- R.
cede“, 3 Eccl. v. Pp. — In Vs. com. S. Cre.
— Compl. prec.
23. F. 5. De ea, (De Temp. P.) spl. Abs. et 20.
⊙ ■ Ben. 1 Noct. „Te Deum“, or. Dom. pre, A.
com. S. Cruc; „Regi“, prec. — (p. Sx.)
Mis. Dom, Gl, sine Cr, 2 or. „Concede“,
3 Eccl. v. Pp, Pf. Pasch, Ite. — Vs. fer.
(T. P.) com. S. Cruc. — Compl. prec.
24. F. 6. De ea, spl, Abs. et Ben. 2 Noct; re- 21.
liq. ut heri. — Vs. sq. (OF) com. Transl. A.
SPN, et S. Gregorii PC.
25. Sab. Dedicatio Basil. Assis, 2 Cl. (OF) 9 l. 22.
S. PC, com. Transl. SPN, S. PC, et S. Ur- A.
bani PM. — 2 or. Transl, 3 S. PC, 4 S.
PM, IO, Cr, Pf. enis. — In Vs. com. Transl,
sq. S. Philippi C, et S. PC. ttm.

26. **Dom. 5.** p. Pasch. De ea, sdx, com. S. 23. C, et S. Eleutherii PM. — 2 or. S. C, 3 S. A. PM, Cr, Pf. Pasch. — In Vs. com. sq, „O Doct”, S. C, et S. Joannis PM.
 Process. in seq. trib. dieb, Missa Rog. (p. Nn; in Vig. UE. Vig.) et Lit. OO. SS. ut 25 April.
27. F. 2. (Rog.) S. Bedae CD, dx. (m. t. v, 24. OM) L1N. 1^o lo. D, 3 N. ppr, 9 l. com fer, A. et S. PM. — 2 or. fer, 3 S. PM, Cr, UEF. — Vs. cap. sq. (m. t. v.) com. prec.
28. F. 3. (Rog.) S. Augustini EC, dx. (OM) — 25. 2 or. Rog. — In Vs. com. sq. et S. Mariae Magd. V.
29. F. 4. (Rog, Vig.) Bb. Stephani et Raym. 26. Mm. ON, sdx. (OM) L1N. 1^o lo, 9 l. com. Vig, R. S. V, et S. Crc; prec. — 2 or. Vig, 3 Rog, 4 S. V, IO, UE. Vig. (vel Mis. Vig, [alb.] Gl, 2 or. Bb. Mm, 3 Rog, 4 S. V, Ite — Vs. sq. (OF) ttm. — Dox. et V. Prm. ppr. ad Vig. Pentec.
- Ben. mensae ppr. — Cras post. Ev. Mis. sol. exting. Cer. Pasch.
30. F. 5. **Ascensio Domini.** 1 Cl. cum Oct. 27. A. G. privil. (OF) — IO, Cr, Pf „Cmets” ppr. A. l. P. (per Oct.) — In Vs. com. sq, et S. Angelae Mer. V. — Dox. et V. Prm. BMV.
31. F. 6. BMV. omn. grat. Mediatricis, dxM. 28. l. P. (OF) 9 l. com. S. V, oct, et S. Petron. V. A. — 2 or. S. V, 3 oct, 4 S. V, IO. etc. ut in Asc, Pf. BMV. — In Vs. com. sq, S, Ang. V, et oct.

Junius

1. Sab. B. Felicis a Nic. CON, dx. (m. t. v, 29. l. P. OM) com. oct. — 2 or. oct, IO, Cr. etc A. ut in Asc. — Vs. Asc. (sdx.) cap. Dom, com. prc, B. Herculani CON, et Ss. Marcellini Mm. — CD.

2. **Dom. infr. Oct**, sdx. (OF) com. B. C, 1. Ss. Mm, et oct. — 2 or. B. C, 3 Ss. Mm, A. 4 oct, IO. etc. ut in Asc. — In Vs. com. sq, B. C, et oct.
3. F. 2. B. Andreae ab Hysp. CON, sdx. (OM) 2. com. oct. — 2 or. oct, 3 „Concede“, IO, A. Cr. etc. ut in Asc. — Vs. sq. com. prc, et oct.
4. F. 3. S. Francisci Caracc. C, dx. (OM) 3. com. oct. — 2 or. oct, IO, Cr. etc. ut in A. Asc. — Vs. cap. sq. com. prc, et oct.
5. F. 4. S. Bonifatii EM, dx. (OM) L3N. ppr, 4. com. oct. — 2 or. oct, IO, Cr. etc. ut in R. Asc. — Vs. sq. (e I. Vs.) com. prc, et S. Norberti EC.
6. F. 5. Octava Ascens, dxM. (OF) 9 l. com. 5. S. EC. — 2 or. S. EC, IO, Cr. etc. ut in A. Asc. — In Vs. com. sq, et S. EC.
7. F. 6. B. Baptistae Var, V. 2. O, sdx. (OM) 6. com. fer. (e Dom. prc.); Prm. sine prec. — A. 2 or. fer, 3 „Concede“, Pf. Asc. — In Vs. com. sq. (e I Vs. Dom. prc.), et B. Pacifici CON. — CF.

8. Sab. (ieiun.) Vigil. Pentec. 1 Cl, de ea 7.
sdx. (e Dom. prc. et ppr.) com. B. CON. *R.*
— Prophet. (viol.), Lit. OO. Ss ; in aliis
Mis. Introitus. — (p. Nn.) or. unica, Pf.
„Cmcts“ „Hanc“ ppr. — Vs. sq. (OF) —
Dox. ppr. ad Sab.

Ben. mensae ppr. et ad Tert. „Veni Creat.“
ad Sab.

9. **Dom. Pentecostes**, 1 Cl. cum Oct. pri. 8.
A. G. vil. (OF) — IO, Seq, Cr, Pf. „Cmcts“ *R.*
I. P. „Hanc“ ppr. ad Sab. — In Vs.
10. F. II Pentec, 1 Cl. (OF) — In Mis ut heri 9.
— In Vs. *R.*
11. F. 3. Pentec, 1 Cl. (OF) — In Mis. ut 10.
Pentec. — In Vs. com. S. Joannis C. ttm. *R.*
12. F. 4. (Q T.) De Oct, sdx. (OF) com. S. 11.
C, et Ss. Basilidis Mm. — (p. Nn.) Lect. *R.*
2 ut ibi, 2 or. S. C, 3 Ss. Mm, IO. etc.
ut Pent. — In Vs. com. S. C.
13. F. 5. De Oct, sdx. (OF) — 2 or Eccl. v. 12.
I. P. Pp, IO. etc. ut Pent. — In Vs. com. S. *R.*
Basili ECD. „O Doct.“.
14. F. 6. (Q. T.) De Oct, sdx. (OF) com. S. 13.
ECD. — (p. Nn) 2 or. S. ECD, IO. etc. *R.*
ut Pent — In Vs. com. S. ECD, B. Jo-
lentae Vid, et Ss. Viti Mm.
15. Sab. (Q. T.) De Oct, sdx. (OF) com. B. 14.
Vid, et Ss. Mm, — (p. Nn.) L 6, ut ibi, *R.*
2 or. B. Vid, 3 Ss. Mm. IO. etc. ut Pent. —
Vs. sq. (OF) com. Dom. (Meridie hodie
adhuc „Regina coeli“).

Ant. **Salve Reg.** — Ben. mensae consueta.

16. **Dom. 1. p. Pent. SS. Trinitatis**, 1 Cl. 15. A. G. (OF) 9 l. com. Dom; ad Prm. „Quicumq“. A. l. p. — 2 or. Dom, IO, Cr, Pf. Trin, UED. — In Vs. com. sq. (ppr.) et Dom.
Kety:... 1 Cl. cum Oct. comm.; de ea com. quotid. in Mis. et Off. praeter 17, 20 et 24 Jun; et quotid. „Cr“.
Vars. Nov. Miast, Lublin.: In Vs. com. sq. et Dom.
17. F. 2. S. Antonii de Pad. CON, 2 Cl. cum 16. resid. Oct. simpl. (e 13; OF) — IO, Cr. — A. In Vs. com. sq. „O Doct.“ — CD.
Sędzisz:... 1 Cl. cum resid. Oct. comm. (OF); rel. in Off. et Mis. ut supra — de oct. com. quotid. praet. 20 Jun, i. e. in Oct. in Missa et Off., ac „Cr“ in Mis.
Vars. N. Miast, Lubl.: Dedicatio Eccl. Cath. A. 1 Cl. (OF) — IO, Cr, Pf. cnis. — In Vs. com. sq. (ppr.) ttm.
18. F. 3. S. Ephraem CD, dx. (OM) L1N. et 17. RR. e fer. 2, 9 l. com. Ss. Marci Mm. — A. 2 or. Ss. Mm, Cr. — Vs. cap. sq. (h. ppr.) com. pcc, et Ss. Gervasii Mm.
Vars. N. Miasto, Lubl.: S. Antonii de Pad. A. CON, 2 Cl. cum Oct. simpl. resid. (e 13; OF) 9 l. com. S. Ephraem CD, et Ss. Marci Mm. — 2 or. S. CD, (3 in priv. Ss. Mm.) IO, Cr. — In Vs. com. sq, et S. CD. ttm. — Cras L1N. et RR. e fer. 2.
19. F. 4. S. Julianae Falc. V, dx. (OM) 9 l. 18. com. Ss. Mm. — 2 or. Ss. Mm. — Vs. A. sq. ttm. — Dox. et V. Prm. BMV. per Oct.
 „Seq.“ dic. cras et in Oct. in omnib. Miss; infra Oct. in lectis omitti potest, et tunc addit. ad V. „Alleluja“.

20. F. 5. **SS. Corporis Christi**, 1 Cl. cum 19. A. G. Oct. privil. (OF) — IO, Seq, Cr, Pf. Na- A. l. p. tiv. — In Vs. com. S. Aloisii C.
21. F. 6. De Oct, sdx. (OF) com. S. C. — 20. 2 or. S. C, IO. etc. ut in festo. — In Vs. A. com. S. Paulini EC, et S. C.
22. Sab. (Vig.) De Oct, sdx. (OF) 9l. Vig. S. Joan, 21. com. S. EC, et Vig. — (Mis. Conv. de A. Oct, p. Nn.) 2 or. S. EC, 3 Vig. IO. etc. ut in festo, UE. Vig. — Vs. cap. Dom, com. Oct, et S. EC. — CD.
- Kety**:... com. Oct. SS. Trin. in utrisq. Va, Ld. et Mis. crast. post. com. Oct. Corp. Chr.
-
23. **Dom. infr. Oct.** (2 p. Pent.) sdx. (OF) 22. com. Oct. — 2 or. Oct, 3 „Concede“, IO. A. etc. ut in festo. — Vs. sq. (ppr.) com. Oct.
24. F. 2. S. Joannis Bapt, 1 Cl. cum Oct. cni. 23 (OF) com. oct. — 2 or. oct, IO, Cr, Pf. A. Nat. — In Vs. com. oct. (e I. Vs.) et S. Gulielmi Abb.
25. F. 3. De Oct. sdx. (OF) com. S. Abb, et 24. oct. S. Joan. — 2 or. S. Abb, 3 oct, IO. etc. A. ut in festo — In Vs. com. Ss. Joannis Mm. (ppr.), et oct.
26. F. 4. De Oct, sdx. (OF) com. Ss. Mm, et 25. oct. — 2 or. Ss. Mm, 3 oct, IO. etc. ut A. in festo. — Vs. sq. (e I. Vs.) com. Ss. Mm, B. Benvenuti CON, et oct.
27. F. 5. Octava SS. Corp. Christi, dxM. (OF) 26. L1N. sq. fer. VI, RR. festi, com. B. C, et A. oct. — 2 or. B. C, 3 oct, IO, Cr, Pf. Nat. — Vs. sq.

28. F. 6. (Vig, de q. nih.) **SS. Cordis Jesu**, 27.
 A. G. 1 Cl. cum Oct. privil. (OF; noviss.) — A.
 l. P. „Cogitat“, IO, Cr, Pf. ppr. — In Vs. com.
 sq. (ppr.).
29. Sab. Ss. Petri et Pauli Ap, 1 Cl. cum 28.
 A. G. Oct. cni (OF) com. Oct. — 2 or. Oct, IO, R.
 l. P. Cr, Pf. Ap. — In Vs. com. sq. (ut infra
 Oct. SS. Cord.) et Oct.
-
30. **Dom. infr. Oct.** (3 p. Pent.) De ea, sdx, 29.
 Off. ppr. infr. Oct. Cord. J, com. S. Pauli, A.
 S. Petri, Oct. Cord. J, et oct. S. Joan.
 — 2 or. S. Pauli, 3 S. Petri, 4 Oct, 5
 oct, IO, Cr, Pf. Oct. — Vs. sq. com. prc,
 S. Pauli, S. Petri, et oct. S. Joan. (e l.
 Vs.) ttm.

Julius

1. F. 2. Pretios. Sanguinis J. Chr, 2 Cl. (OF) 30.
 com. Oct. S. Joan; V. Prm. ppr. — 2 or. R.
 S. Joan, IO, Cr, Pf. Cruc. — Vs. sq. com.
 prc, et S. Joan. — Dox. et V. Prm. BMV.
Dioec. Lomžen.: Vs. sq. com. prc. ttm. —
 Dox. et V. Prm. BMV.
2. F. 3. Visitatio BMV, 2 Cl. (OF) 9 l. Ss. 1.
 A. G. Processi Mm, com. Oct. Cord. J, et Ss. A.
 Mm. — 2 or. Oct, (3 in priv. Ss. Mm.)
 IO, Cr, Pf. BMV. — In Vs. com. sq, et
 Oct. — CD.

Dioec. Łomż.:... 1 Cl. (OF) com. Oct. — 2 or. A
Oct, IO, Cr, Pf. BMV. — In Vs. com. sq, et
Oct. — CD.

Ap. Felic: In Vs. com. S. Leonis PC, et Oct.
— Dox. et V. Prm. BMV.

3. F. 4. S. Leonis PC, sdx. (e 28 Jun; OM) 2.
ad L1N. RR. Cord. J, com. Oct, et oct. — A.
2 or. Oct, 3 oct, IO, Cr, Pf. Oct, UE. infr.
oct. Apost. (Ecce nos). — In Vs. com.
sq. (e I. Vs.) et oct. (ant. et V. ppr.).

Ap. Felic.: Purissimi Cordis BMV. (Sab. p. A.
Oct. Corp. Chr.), 2 Cl. (OF) 9 l. com. S. PC, et
SS. Cordis J. — 2 or. S. PC, 3 Cord. J, IO, Cr,
Pf BMV.—In Vs. com. S. PC, et Cord. J. (e I. Vs.).

Archid. Cracov: Vs. sq. com. Oct. ttm. — CD.

4. F. 5. Dies 7 Oct, sdx, (OF) com. oct. Ss. 3.
Ap. — 2 or. oct, 3 „Concede“, IO, Cr, A.
Pf. Oct. — Vs. sq. (e I. Vs.) com. S. Ant.
Mariae C, et oct.

Archid. Crac.: Dedicatio Eccl. Cathedr, 1 Cl. A.
(OF) com. Oct. Cord. J.—2 or. Oct, IO, Cr, Pf.
Oct — In Vs. com. sq, et S. Ant. Mariae C. — CD.

5. F. 6. Octava SS. Cordis, dxM. (OF) 9 l. 4.
com. S. C, et oct. — 2 or. S. C, 3 oct, A.
IO etc. ut die 28 Jun. — In Vs. com.
sq. (ppr.) et S. C.

6. Sab. Octava Ss. Petri et Pauli, dxM. (OM) 5.
— Cr, Pf. Ap. — Vs. sq. com. pre, et Ss. R.
Cyrilli EE. Cc. (ppr.)

-
7. **Dom. 4.** p. Pent. De ea, sdx, com. Ss. 6.
EE. Cc. — 2 or. Ss. EE. Cc, Cr, Pf. Trin. Vir.
— In Vs. com. sq, „Ora“, et Ss. EE. Cc.

8. F. 2. S. Elisabeth Vid. 3. O, dxM. (OM) 7.
l. p. quaed. ppr. — Vs. (OM) cap. sq. (oa ppr.) A.
com. pre. — CF.

Ap. Felician. — Vs. sq. (OF) „Ora”, com. pre.
V. „Meritis” — CD

9. F. 3. S. Veronicae de Jul, V. 2. O, dxM. 8.
l. p. (OF); Hor. (OM) — In Vs. (OF) com. sq. A.
CF.

Apud Felic.... 2 Cl. (OF) — IO, Cr. — In Vs.
com. sq. — CD.

10. F. 4. Ss. Sept. Fratrum Mm, sdx. (OM) 9.
⊙ 8 R. „Haec”, suf; prec. (ad Prm.) — 2 or. R.
„A cunct”, 3 ad lib. — Vs. sq. com. pre,
et S. Pii PM.

11. F. 5. Ss. Nicolai et Soc. Mm ON, dxM. 10.
l. p. (OM) 8 R. „Haec”, 9 l. com. S. PM. — 2 R.
or. S. PM. — In Vs. com. sq, et Ss. Na-
boris Mm.

12. F. 6. S. Joannis Gualb. C, dx. (OM) com. 11.
Ss. Mm. — 2 or. Ss. Mm. — In Vs. com. sq. A.

13. Sab. S. Anacleti PM, sdx. (OM) suf; prec. 12.
⊙ — 2 or. „A cunct”, 3 ad lib. — Vs. sq. R.
(ppr; OF) com. Dom. ttm. — CD.

14. **Dom. 5.** p. Pent. S. Bonaventurae ECD. 13.
l. p. ON, 2 Cl, cum Oct. simpl. (OF) 9 l. com. A.
Dom. — 2 or. Dom, IO, Cr, Pf. Tr, UED.
— In Vs. com. sq, et Dom.

15. F. 2. S. Henrici C, sdx. (m. t. v, OM) 14.
⊙ L1N. et RR. Dom, suf; prec. — 2 or. A.
„A cunct”, 3 ad lib. — Vs. sq, com. pre,
et Canoniz. S. PN. Franc. — Dox. et V.
Prm. BMV.

16. F. 3. B. M. V. de Monte Carmelo, dxM. 15. (OF) 9 l. com. Canoniz. — 2 or. Can, Cr, A. Pf. BMV. — In Vs. com. sq, et Can. SPN.
 17. F. 4. S. Alexii C, sdx. (OM) suf; prec. — 16. ☉ ■ or. ut 15. — Vs. sq. (m. t. v.) com. pre, A. ac Ss. Symphor. Mm.
 18. F. 5. S. Camilli C, dx. (OM) 9 l. com Ss. 17. Mm. — 2 or. Ss. Mm. — Vs. cap. sq. A. (m. t. v.) com. pre.
 19. F. 6. S. Vincentii a P, C, dx. (OM) — Vs. 18. cap. sq. (m. t. v.) com. pre, et S. Mar- A. garitae VM.
 20. Sab. S. Hieronymi C, dx. (OM) com. S. 19. VM. — 2 or. S. VM. — Vs. sq. com. pre, A. S. Francisci Sol. CON, Oct. S. Bonav. ECD, et S. Praxedis V.
-
21. **Dom. 6.** p. Pent. De ea, sdx, com. S. C, 20. l. p. oct, et S. V. — 2 or. S. C, 3 oct, 4 S. V, Vir. IO, Cr, Pf. Trin. — In Vs. com. sq. (ppr.), et S. C.
 22. F. 2. S. Mariae Magdal, dx. (OM) hymn. 21. e I Vs, L. ppr. — Cr. — Vs. sq. (OF) A. „Ora“, com. pre, et S. Apollinaris EM. — CD.
Suffr. pro dfetis FFr. et Benefact.
 23. F. 3. S. Laurentii a Brund. CON, 2 Cl. 22. l. p. (OF) 9 l. com. S. EM, et S. Liborii EC. A. — 2 or. S. EM, (3 in priv. S. EC.) IO, Cr. — In Vs. com. sq, et S. EM.
 24. F. 4. (Vig.) B. Cunegundis V. 2. O, sdx. 23. (OM) 9 l. com. Vig, et S. Christinae VM, A. suf; prec. — 2 or. Vig, 3 S. VM, UE. Vig.

- Mis. Conv. de Vig. (p. Nn; viol.) sine Gl, 2 or. diei, 3 S. VM, Pf. cnis, Ben. Dno. — Vs. sq. (OF) ttm.
25. F. 5. S. Jacobi Ap, 2 Cl. (OF) com. S. 24. Christophori M. — (2 or. in priv. S. M.) R. IO, Cr, Pf. Ap. — In Vs. com sq.
26. F. 6. S. Annae, Matr. BMV, 2 Cl. (OF) 25. — IO. — In Vs. com. sq. A.
27. Sab. B. Mariae Magd. Martin, V. 2. O, 26. i. p. dx. (OM) 9 l. com. S. Pantaleonis M. — A. 2 or. S. M. — Vs. sq. com. prec, et Ss. Nazarii Mm.
-
28. **Dom. 7.** p. Pent. De ea, sdx, com. Ss. 27. Mm, suf; „Quicumq,“ prec — 2 or. Ss. Vir. Mm, 3 „A cunct,“ Cr, Pf. Trin — In Vs. com. sq, Ss. Mm, et Ss. Felicis Mm, suf. — Compl. prec.
29. F. 2. S. Marthae V, sdx. (OM) com. Ss. Mm, 28. ☉ ■ suf; prec. — 2 or. Ss. Mm, 3 „A cunct“. A. — Vs. cap. sq, com. prec, ac Ss. Abdon Mm; suf. — Compl. prec.
30. F. 3. Bb. Simonis, Petri, Archang. Cc. 29. ☉ ■ ON, sdx. (OM) 9 l. com. Ss. Mm, suf; A. prec. — or. ut heri — Vs. sq. com. prec.
31. F. 4. S. Ignatii C, dxM. (OM) — Vs. sq. 1. (OF) com. S. Pauli Ap, prec, et Ss. Ma- A. chab. Mm. — CD.

Augustus

1. F. 5. S. Petri ad Vinc, dxM. (OF) 9 l. Ss. 2. Mm, com. S. Pauli, et Ss. Mm. — 2 or. A. S. Pauli, 3 Ss. Mm, Cr, Pf. Ap. — Vs. sq. (OF) ppr, com. prc, S. Pauli Ap, et S. Alfonsi Mae ECD. „O Doctor“. — Dox. et V. Prm. BMV.
 Indulg. *tot. quot.* hodie a merid, et cras; in visit, ecclesiae recitentur 6 Pater n., 6 Ave M., 6 Gloria P. ad ment. SS. Pontif. (S. Poenit. 10 Jul. 1924).
 2. F. 6. Dedic. Basil. S. Mariae Angel, 2 Cl. 3. l. P. (OF) 9 l. com. S. ECD, et S. Stephani PM. A. — 2 or. S. ECD, (3 in priv. S. PM.), IO, Cr, Pf. BMV. — In Vs. com. sq, et S. ECD.
 3. Sab. Inventio Corp. S. Steph, sdx. (ad 4. ☉ ■ Mat, et Hor. OM; ad Ld. OF) L. ppr, suf; R. prec. — 2 or. „A cunct“, 3 ad lib. — Vs. sq. (m, t, v; OF) „Ora“, com. Dom. („Sapientia“) ttm.
-
4. **Dom. 8.** p. Pent. (1 Aug.) S. P. Dominici 5. l. P. C, 1 Cl. (OF) L1N. „Beatus vir“, 9 l. com. A. Dom. — 2 or. Dom, IO, Cr, Pf. Tr, UED. — In Vs. com. sq, et Dom. — Dox. et V. Prm. BMV.
Kutkorz: Vs. sq. (OF) com. prc, et Dom.
 5. F. 2. BMV. ad Nives, dxM. (OF) — Cr, 6. Pf. BMV. — Vs. sq. (OF) com. prc. — A. Dox. et V. Prm. ppr.

Kutkorz... 1 Cl. cum Oct. comm, de qua fit quotidie com. in Off; in Mis.: com, Cr, Pf. BMV. praeter diem sq. et 10. — In Vs. com. sq.

Vars. Vs. sq. ttm.

6. F. 3. Transfiguratio J. Chr, 2 Cl. (OF) 7.
9 l com Ss. Xysti Mm. — (2 or. in priv. A.
Ss. Mm.) IO, Cr, Pf. Nat. — In Vs. com.
sq, et S. Cajetani C. (ppr.).

Vars.. 1 Cl. cum. Oct. cni (OF), de qua com.
quotid. in Off. et in Mis. praet. diem 10 et 12.
ac Cr, Pf. Nat. — IO, Cr, Pf. Nat. — In Vs.
com. sq, et S. Cajetani C. (ppr.).

7. F. 4. Bb. Agathangeli et Cass. Mm. ON, 8.
l. p. dx. (OM) L1N. et RR. e Dom, 8 R. „Haec“, R.
9 l. com. S. C, et S. Donati EM. — 2 or.
S. C, 3 S. EM. — In Vs. com. sq, et S. Cajet.

8. F. 5. Ss. Cyriaci et Soc. Mm, sdx, (OM) 9.
☉ ■ suf; prec. (ad Prm.); *Vars.* et *Kutk.*: Suf. R.
et prec. omitt. — 2 or. „A cunct“, 3 ad
lib. (*Vars.* et *Kutk.*: 2 or. oct.) — Vs. sq.
(m. t. v.) com. prc, et S. Romani M.

9. F. 6. (Vig.) S. Joannis Vian, C. 3. O, dxM. 10.
(OM) 9 l. com. Vig, et S. M. — 2 or. Vig, A.
3 S. M, UE. Vig. — Mis. Conv. de Vig.
(viol; p. Nn.) sine „Gl,“ 2 or. S. C, 3 S.
M, Pf. cnis, Ben. Dno. — (*Vars.* et *Kutk.*:
3 or. oct, 4 S. M, IO.) — Vs. sq. (ppr.)
com. prc. ttm.

Zakroczym: Vs. sq. (ppr.) ttm.

10. Sab. S. Laurentii M, 2 Cl. cum Oct. simpl. 11.
(OF) Invit, ant, ps. 3 N. ppr. — IO. — R.
In Vs. com. sq, et B. Ludovicae Vid.

Zakrocz.:... 1 Cl. cum. Oct. comm, de qua fit
quotid. com. in Off, et Mis. praeter diem 12, 15,
16; ac quotid. Cr; (omitt. suf. et prec.) — IO,
Cr. — In Vs. com. sq, et B. Ludovicae Vid. ttm.

Apud. Monial. Francisc. (Vigilia S. Clarae.)
Off. ut supra; 9 l. com. Vig. in Ld. et Mis.; UE.
Vig. (Mis. Vig. prohib.).

11. **Dom. 9.** p. Pent. (2 Aug.) De ea, sdx, 12.
com. B. Vid, et Ss. Tiburtii Mm, suf; Vir.
„Quicumq,“ prec. (*Vars, Kutk, Zakrocz.*:
omitt. suf, Quic, prec.) — 2 or. B. Vid, 3
Ss. Mm, Cr, Pf. Trin. — Vs. sq, com.
prec. ttm.

Kutkorz: com. Oct. in I et II Vs. S. Clarae,
Ld. et Mis.

12. F. 2. S. Clarae V. 2. O, 1 Cl. (OF) — IO, 13.
A. G. Cr. — In Vs. com. sq. A.
I. P.

Ap. Mon. Franc... 1 Cl. cum. Oct. comm, de
qua quotid. com. excep. dieb. 15 et 16; in Mis.:
Cr.; omitt. suf. et prec. — Post „Ben. Dno“ in
Vs. dic. Vs. dfctor.; cras Commem. Sororum
defunct.

Varsav.: In Vs. com sq, ac Bb. Joan. et
Vinc. Cc. ON. (e 9 Aug).

13. F. 3. Bb. Joannis et Vincentii Cc. ON, 14.
o ■ sdx. (e 9 Aug.; OM) 9 l. com. Ss. Hippo- A.
lyti Mm, suf; prec. — 2 or. Ss. Mm, 3
„A cunct.“ — Vs. cap. sq. com. prec, et
S. Eusebii C, suf. — Comp. prec.

Vars.: Octava Transfigur. J. Chr, dxM. (OM) A.
9 l. com. Bb. Cc, ac Ss. Hippol. Mm. — 2 or.
Bb. Cc, 3 Ss. Mm, Cr, Pf. Nat. — In Vs. com.
sq, Bb. Cc, et S. Eusebii C.

14. F. 4. (Vig, ieiun.) B. Sanctis CON, sdx. (OM) 15.
9 l. com. Vig, et S. C, suf; prec. — 2 or. A.
Vig, 3 S. C, UE. Vig. — Mis. Conv. Vig.
(viol; p. Nn.) ut die 9; 2 or. B. C, 3 S.
C. — Vs. sq (OF) ttm. — CD. — Dox.
et V. Prm. BMV. per Oct.

Cras bened. frugum et herbar.

15. F. 5. **Assumptio BMV**, 1 Cl. cum Oct. 16.
A. G. (OF) — IO, Cr, Pf. BMV. per Oct. — In A.
l. P. Vs. com. sq. (ppr.).
16. F. 6. S. Joachim Patr. BMV, 2 Cl. (m. t. 17.
v, OF) L1N. „Beatus”. — IO, Cr, Pf. BMV. A.
— In Vs. com. sq.

Zakrocz. In Vs. com. sq. (or. oppr.) et S. Hyacinthi C.

17. Sab. S. Hyacinthi C, dx. (m. t. v, OM) 18.
com. oct, et Oct. S. Laurentii M. (or. ppr.) A.
— 2 or. oct, 3 S. Laur, Cr, Pf. BMV. —
Vs. sq. com. prec, B. Paulae V, oct, et S.
Agapiti M.

Zakrocz. Octava S. Laur. M, dxM. (OM) 9 l. R.
com. S. C, et oct. — 2 or. S. C, 3 oct, Cr, Pf.
BMV. — Vs. sq, com, prec, B. Paulae V, S. C,
oct, et S. Agapiti M.

18. **Dom. 10.** p. Pent. (3 Aug.) De ea, sdx, 19.
com. B. V, oct, et S. M. — 2 or. B. V, Vir.
3 oct, 4 S. M, IO, Cr, Pf. Trin. — In Vs.
com. sq, B. V, S. Joannis Eud. C, et oct.

Ap. Mon. Franc.: In Vs. com. sq, S. Ludovici
EC, S. Joannis Eudes C, B. V, et oct. BMV.

19. F. 2. S. Ludovici EC. ON, dxM. (OM) 9 l. 20.
l. P. com. S. C, et oct. — 2 or. S. C, 3 oct, A.

Cr, Pf. BMV. — In Vs. com. sq. „O Doctor“, S. Joan. C. (V. „Os iusti“), et oct.

l. p. **Ap. Mon. Franc.: Octava S. Clarae** V, A. dxM. (OM) 9 l. com. S. EC, S. Joan. C, et oct. BMV. — 2 or. S. EC, 3 S. C, 4 oct, IO, Cr, Pf. BMV. — In Vs. com. sq. „O Doct“, S. EC, S. Joan. C, et oct. BMV.

20. F. 3. S. Bernardi Abb. D, dx. (OM) com. 21. oct. — 2 or. oct, Cr, Pf. BMV. — Vs. cap. A. sq. com. pre, et oct.

21. F. 4. S. Joannae Franc. Vid, dx. (OM) 22. com. oct. — 2 or. oct, Cr, Pf. BMV. — A. Vs. sq. (OM) com. pre, ac Ss. Timothei Mm. — C. Fer.

22. F. 5. Octava Assumpt. BMV, dxM. (OM) 23. i. p. L. ppr, 9 l. com. Ss. Mm. — 2 or. Ss. A. A. G. Mm, Cr, Pf. BMV. — In Vs. com. sq.

23. F. 6. (Vig.) S. Philippi Ben. C, dx. (OM) 24. 9 l. com. Vig. — 2 or. UE. Vig. — Mis. A. Conv. de Vig. (viol; p. Nn.), sine „Gl“, 2 or. diei, 3 „Concede“, Pf. cnis, Ben. Dno. — Vs. sq. com. pre.

24. Sab. S. Bartholomaei Ap. 2 Cl. (OF) — IO, 25. Cr, Pf. Ap. — In Vs. com. sq. „Ora“, et Dom. R.

25. **Dom. 11.** p. Pent, (4 Aug.) S. Ludovici 26. A. G. Reg. C. 3. O, 2 Cl. (OF) — *Ap. Tert. Ord...* A. l. p. 1 Cl. cum Oct. comm. de qua quotid. com. in Vs. Ld. et Mis. ac Cr. per tot. Oct.) — L1N „Beatus vir“, 9 l. com. Dom. — 2 or. Dom, IO, Cr, Pf. Tr, UED. — In Vs. com. sq, et Dom.

26. F. 2. S. Rochi C. 3. O, dxM. (m. t. v, OM) 27.
l. p. 9 l. com. S. Zephyrini PM. — 2 or. S. A.
PM. — In Vs. com. sq.
27. F. 3. S. Josephi Calas. C, dx. (m. t. v, 28.
OM) — Vs. cap. sq. „O Doct“, com. prc, A.
et S. Hermetis M.
28. F. 4. S. Augustini ECD, dx. (OM) com. S. 29.
M. — 2 or. S. M, Cr. — Vs. sq. (OF) ppr. A.
com. prc, et S. Sabinae M. — CD.

Vars. et Nov. Miast.: Vs. sq. ttm. (OF).

29. F. 5. Decollatio S. Joan. Bapt, dxM. (OF) 30.
9 l. com. S. M. — 2 or. S. M. — In Vs. R.
com. sq, ac Ss. Felicis Mm.

Vars. et Nov. Miast.:... 1 Cl. (OF) — sine 2
or. et Cr; IO. — In Vs. com. sq. ttm. — CD.

30. F. 6. S. Rosae Lim. V, dx. (OM) 9 l. com. 1.
Ss. Mm. — 2 or. Ss. Mm. — Vs. cap. sq. A.
(m. t. v.) com. prc.
31. Sab. S. Raymundi C, dx. (OM) — Vs. 2.
sq. com. prc, B. Bernardi CON, S. Aegidii A.
Abb. (V. „Os iusti“), et Ss. 12 Fratr. Mm.

Ap. Tert. Ord.: Vs. sq. com. prc, S. Ludovici
C. „Ora“, B. Bernardi CON, S. Aegidii Abb. (I ant.
III noct, V. „Os iusti“), et Ss. 12 Fratr. Mm.

September

1. **Dom. 12.** p. Pent. (1 Sept.) De ea, sdx. 3.
com. B. CON, S. Abb, et Ss. Mm. — 2 or. **Vir.**
• B. C, 3 S. Abb, 4 Ss. Mm, IO, Cr, Pf.
Tr. — In Vs. com. sq, B. CON, et S.
Stephani C.
- Ap. Tert. Ord.:** In Off. Domin. com. S. Ludov,
B. CON, S. Abb, Ss. Mm. — 2 or. S. Ludov, 3
B. CON, 4 S. Abb, 5 Ss. Mm, IO, Cr, Pf. Trin.
— In Vs. com. sq, S. Ludov, B. CON, et S.
Steph. C.
2. F. 2. B. Apollinaris a Pos. MON, dx. (OM) 4.
9 l. com. S. St. C. — 2 or. S. C. — In Vs. **R.**
com. sq, et S. Steph. C.
3. F. 3. Bb. Joannis et Petri Mm. ON, sdx. 5.
⊙ ■ (OM) 8 **R.** „Haec“, suf; prec. — 2 or. **R.**
„A cunct“, 3 ad lib; post Grad. „Haec
est.“ — Vs. sq. com. prec.
- Lomza:** Vs. sq. ttm.
4. F. 4. Rosae a Vit. V. 3. O, dxM. (OM) 6.
i. p. — In Vs. com. sq, et S. Laurentii Just. EC. **A.**
- Lomza:** Dedicatio Eccl. Cathedr, 1 Cl. (OF) com. **A.**
S. Rosae V. — (2 or. in priv. S. V.) IO, Cr. —
In Vs. com. sq. ttm.
5. F. 5. B. Gentilis MON, sdx. (OM) 9 l. com. 7.
⊙ ■ S. EC, suf; prec. — 2 or. S. EC, 3 „A **R.**
cunct.“ — Vs. cap. sq. com. prec, et S.
EC, suf. — Compl. prec.
6. F. 6. Bb. Liberati, Tim. et Peregrini Cc, 8.
⊙ ■ ON, sdx. (OM), suf; prec. — 2 or. „A **A.**

cunct," 3 ad lib. — In Vs. com. sq, suf.
2^o lo. — Compl. prec. — Dox. et V. Prm.
BMV.

7. Sab. S. Mariae in Sab, spl, Abs. Ben. et 9.
⊙ ■ 3 L. ppr, suf. 2^o lo; prec. — (p. Sx.) 2 A.
or. Spir. S, 3 Eccl. v. Pp, Pf. BMV. „in
veneratione.“ — Vs. sq. com. Dom. —
Dox. et V. Prm. BMV.

8. **Dom. 13.** p. Pent. (2 Sept.) Nativitas 10.
A. G. BMV, 2 Cl. cum Oct. simpl. (OF) 9 l. com. A.
l. P. Dom, et S. Hadriani M. — 2 or. Dom, (3
in priv. S. M.), IO, Cr, Pf. BMV. — In
Vs. com. sq, et Dom.

Dioec. Tarnov.. (Tit. Eccl. Cath.) 1 Cl.; de S.
Hadriano nihil.

Infra Oct. Mis. vot. de Nativ, BMV. sine Cr.

9. F. 2. B. Seraphinae Vid. 2. O, sdx. (OM) 11.
⊙ ■ 9 l. com. S. Gorgonii M, suf; prec. — A.
2 or. S. M, 3 „A cunct“. — Vs. sq. com. prec.
10. F. 3. S. Nicolai a Tol. C, dx, (OM) — In 12.
Vs. com. sq. A.
11. F. 4. Ss. Proti et Hyac. Mm, spl, (OS) suf; 13.
⊙ ■ prec. — (p. Sx.) 2 or. „A cunct“, 3 ad lib. — Vs. R.
sq. (OF) ttm. — CD. — Dox. et V. Prm. BMV.
12. F. 5. SS. Nominis BMV, dxM. (OF) — Cr, 14.
Pf. BMV. — Vs. sq. (OF) ttm. — Compl. A.
hymn. concl. consuet. — (*In eccl. n. con-*
secr.: In Vs. com. sq. — Dox. BMV.).

Drohobycz:... 1 Cl. cum Oct. eni, de qua fit
quotidie com. in Off. et Mis. praet. diem 15 et
17; ac quotid. Cr; Dox. et V. Prm. BMV; omitt.
suf. et prec. — IO, Cr, Pf. BMV. — In Vs. com. sq.

13. F. 6. Dedicatio ecclesiar, O. N, 1 cl. cum 15.
l. p. Oct. comm. (OF), com. B. Francisci a Cald. A.
CON. — (2 or. in priv. B. C.) IO, Cr, Pf.
cnis. (Secr. cum parenth. seu 1 a per
Oct.) — In Vs. com. sq. (ppr.).
- ⊙ ■ **In eccl. n. consecr.:** B. Francisci a Cald. A.
CON, sdx. (m. t. v, OM) suf; prec. — 2 or. „A
cunct“, 3 ad lib. — Vs. sq. (OF) com. pre.
14. Sab. Exaltatio S. Crucis, dxM. (OF) com. 16.
oct. — 2 or. oct, Cr, Pf. Cruc. — Vs. sq. R.
(OF) com. pre, et Dom. ttm. — Dox. et
V. Prm. ppr.
- Krosno:**.... (Tid. eccl.) 1 Cl. cum. Oct, de qua
quotld. com. et Pf. Cruc. except. 15, et 17; ac
Cr. — IO, Cr, Pf. Cruc. — In Vs. com. sq, et Dom.
In eccl. n. cons. dieb. seq. omitt.: com. oct,
et Cr, si ratione fit octavae.
-
15. **Dom. 14.** p. Pent. (3 Sept.) Septem Do- 17.
lor. BMV, 2 cl. (OF) 9 l. com. Dom, et A.
S. Nicomedis M. — 2 or. Dom. (3 in priv.
S. M.) IO, Seq, Cr, Pf. BMV, UED. — In Vs.
com. sq, Dom, et Ss. Cornelii Mm.
16. F. 2. B. Francisci Mariae CON, dx. (m. 18.
t. v, OM) L1N. et RR. Dom, 9 l. com. Ss. A.
Mm, oct, ac Ss. Euphem. Mm. — 2 or.
Ss. Mm, 3 oct, 4 Ss. Euph. Mm, IO, Cr.
— (*Krosno*: com. 2 oct.) — Vs. sq. (OF)
com. pre. ttm. — (Dox. consueta).
17. F. 3. Ss. Stigmatum S. P. N. Franc, 2 Cl. 19.
A. G. (OF) — IO, Cr, Pf. ppr. — In Vs. com. A.
l. p. sq. (ppr.).
18. F. 4. (Q. T.) S. Josephi Cup. CON, dxM. 20.
l. p. (OM) L. ppr, 9 l. fer, com. oct, et fer. A.

(Krosno: 2 oct.) — 2 or. oct, 3 fer, (Kr. 2 oct.), Cr, UEF. — Mis. Conv. de fer, (viol; p. Nn.) sine „Gl“, 2 or. diei, 3 oct, Pf. cnis, Ben. Dno. — In Vs. com. sq, et oct.

Drohob.: In Vs. com. sq, et Ss. Januarii Mm.

19. F. 5. Ss. Januarii Mm, dx. (OM) L1N. fer. 21. 2, RR. e fer. 5, com. oct. (Kros.: 2 oct.) R. — 2 or. oct, Cr. — Vs. sq. com. prc, et Ss. Eustachii Mm. (Kr. com. oct, et cras).

Drohob.: Octava SS. Nominis BMV, dxM. (OM) A. or. de festo, L1N. e fer. 2. RR. fer. 5, 2 et 3 N. de Cni, 9 l. com. Ss. Mm. — 2 or. Ss. Mm, Cr, Pf. BMV. — In Vs. com. sq, et Ss. Mm.

In eccl. n. consecr.: Vs. cap. sq, com. prc.

20. F. 6. (Q. T, Vig.) Octava Dedic. eccl, dxM. 22. (OM) L1N. e fer. 3, RR. e fer. 6, 2 et 3 A. N. de Oct, 9 l. fer, com. Ss. Mm, et fer. — 2 or. Ss. Mm, 3 fer, 4 Vig, IO, Cr, UEF. — Mis. Conv. de fer, (viol; p. Nn.) sine „Gl“, 2 or. diei, 3 Ss. Mm, 4 Vig, IO, Pf. cnis, Ben. Dno, UE. Vig. — Vs. sq. com. prc, et Ss. Mm.

In eccl. n. cons.: (Q. T, Vig.) Ss. Eustachii R. et Soc. Mm, dx. (OM) L1N. e fer. 3, RR. fer. 6, 9 l. com. fer. — 2 or. fer, 3, Vig, UE. Fer. — Mis. Conv. ut supra. — Vs. sq. com. prc.

Krosno. Ad Vs. com. Oct. S. Cruc. (e I Vs.); etiam cras in Ld, Mis. et Vs. — Pf. Ap.

21. Sab. (Q. T.) S. Matthaei Ap, 2 Cl. (OF) 23. 9 l. com. fer. — (p. Tt.) 2 or. fer, IO, R. Cr, Pf. Ap, UEF. In Vs. com. sq, et S. Thomae EC. (ppr.) ttm.

22. **Dom. 15.** p. Pent. (4 Sept.) De ea, sdx, 24. com. S. EC, et Ss. Mauritii Mm. — 2 or. Vir. S. EC, 3 Ss. Mm, Cr, Pf. Tr. — In Vs. com. sq, S. EC, et S. Theclae VM.
23. F. 2. S. Lini PM, sdx. (OM) 9 l. com. S. 25. ☉ ■ VM, suf; prec. — 2 or. S. VM, 3 „A R. cunct.“ — Vs. sq. com. prec, et BMV. de Mercede. — Dox. et V. Prm. BMV.
24. F. 3. S. Pacifici a Sept. CON, dxM. (e 25; 26. l. p. OM) 9 l. com. BMV. — 2 or. BMV, Cr, A. Pf. BMV, UE. BMV. — In Vs. com. BMV.

Varsav. Vs. sq. (OF) ttm.

Cras incip. Novend. S. P. N. Franc.

25. F. 4. De ea, spl, Abs. et Ben. 3 Noct, sine 27. ☉ ■ „Te Deum“, suf; „Pacem“, prec. — Mis. Vir. Dom. 15, 2 or. „A cunct“, 3 „Fidelium“, 4 ad lib, sine Gl. et Cr, Pf. cnis, Ben. Dno. — Mis. Conv. (p. Prm.) pro dftis (cum „Seq.“) — Vs. sq, suf. — Compl. prec.

Vars. B. Ladislai de Gieln. CON, Patr. loci 1 A. Cl. (OF) — IO, Cr, Pf. cnis. — In Vs. ttm.

26. F. 5. Ss. Cypriani et Just. Mm, spl. (OS) 28. ☉ ■ L1N. et RR. e Dom. 5 Sept, suf; prec. — R. (p. Sx.) 2 or. „A cunct,“ 3 ad lib. — Vs. sq. com. Ss. Cosmae Mm.
27. F. 6. S. Elzearii C. 3. O, dxM. (OM) L1N. 29. l. p. et RR. e fer. 6 p. Dom. 5, 9 l. com. Ss. A. Mm. — 2 or. Ss. Mm. — In Vs. com. sq, S. Wenceslai M, et Ss. Mm.

Archid. Crae. Vs. sq. (OF) ttm.

28. Sab. B. Bernardini a Fel. CON, sdx. (OM) 1. ☉ ■ L1N. e Sab. p. Dom. 5 Sept, 9 l. com. A.

S. M, suf; prec. — 2 or. S. M, 3 „A cunct”.
— Vs. sq. (OF) et Dom. ttm.

Archid. Cracov.: S. Wenceslai M, 1 Cl, (OF) R.
L1N. 1^o lo. plur. Mm, 2N. e Brev. saec, 3N. 3^o
lo, com. B. Bernardini CON. — (2 or. in priv.
B. CON.) IO, Cr. — Vs. sq. (OF) com. pre, et
Dom. ttm.

29. **Dom. 16.** p. Pent. (1 Oct.) S. Michaelis 2.
l. p. Arch, 1 Cl. (OF) 9 l. com. Dom. — 2 or. A.
Dom, IO, Cr, Pf. Tr, UED. — In Vs. com.
sq. „O Doctor“, et Dom.

Suffr. pro dftis FFr. et Benefact.

30. F. 2. S. Hieronymi CD, dx. (OM) L1N. et 3.
RR. e Dom. 1 Oct. — Cr. — In Vs. com. A.
sq, et S. Remigii EC. (V. „Elegit.“).

October

1. F. 3. B. Joannis a Dukla CON, sdx. (m. 4
 t. v, OM) 9 l. com. S. EC, suf; prec. — A.
 2 or. S. EC, 3 „A cunct“. — Vs. sq. com. pre.
2. F. 4. Ss. Angelorum Custod, dxM (OF) 5.
 l. p. — Cr. — In Vs. com. sq. A.
3. F. 5. (Vig, ieiun.) S. Teresiae a Jesu Inf, 6.
 V, dx. (OM) 9 l. com. Vig. — 2 or. UE. A.
 Vig. — Mis. Conv. de Vig. (viol; p. Nn.)
 sine „Gl“, 2 or. diei, 3 „Concede“, Pf.
 cnis, Ben. Dno. — Vs. sq. (OF) ttm.

4. F. 6. **S. P. N. Francisci** C, 1 Cl. cum 7.
 A. G. Oct. cni (OF) — IO, Cr, Pf. ppr. per Oct. A.
 I. P. — In Vs. com. sq. — In choro post Ben.
 Dno. Vs. dfctor.

5. Sab. (Commemor. Omn. nost. Fratr. De- 8.
 © ■ funct.) B. Felicis V. 2. O, sdx. (OM) 9 l. A.
 Ss. Placidi Mm, com. oct, et Ss. Mm. —
 2 or. oct, 3 Ss. Mm, Cr, Pf. oct. — Vs.
 sq. com. pre, S. Mariae Franc. V, S. Bru-
 nonis C, et oct.

Si Off. dfctor. separetur ab Off. diei, praemitt.
 „Pater, Ave, Credo“.

6. **Dom. 17. p. Pent.** (2 Oct.) De ea, sdx. 9.
 (hymn. „Primo die“) com. S. V, S. C, et vir.
 oct. — 2 or. S. V, 3 S. C, 4 oct, IO, Cr,
 Pf. Tr. — Vs. sq. (ppr.) com. pre, S. V,
 et S. C. ttm. — Dox. et V. Prm. BMV.

Suffr. pro dfctis Benefactorib.

7. F. 2. SS. Rosarii BMV, 2 Cl. (OF) 9 l. 10.
 com. S. Marci PC, ac Ss. Sergii Mm. — A.
 (2 or. in priv. S. PC, 3 Ss. Mm) IO, Cr,
 Pf. BMV. — In Vs. com. sq. ttm.
8. F. 3. Birgittae Vid. dx. (OM) com. oct. 11.
 — 2 or. oct, ep. „Charis.“, Cr, Pf. oct. — A.
 In Vs. com. sq, et oct.
9. F. 4. Ss. Dionysii et Soc. Mm, sdx. (OM) 12.
 © ■ com. oct. — 2 or. oct, 3 „Concede“, Cr, R.
 Pf. oct. — Vs. sq. com. pre, S. Franc.
 Borg. C, et oct.
10. F. 5. Ss. Danielis et Soc. Mm. ON, dxM. 13.
 I. P. (e 13; OM) 8 R. „Haec“, 9 l. com. S. C, R.

- et oct. — 2 or. S. C, 3 oct, Cr, Pf. oct.
— Vs. sq. com. pre, et diei Oct. SPN.
Franc. (e I Vs.) — Dox. et V. Prm. BMV.
11. F. 6. Maternitatis BMV, 2 Cl. (OF) V. 3i 14.
N, com. oct. S. P. N. — 2 or. oct, IO, Cr, A.
Pf. BMV. — In Vs. com. sq, et oct.
12. Sab. S. Seraphini CON, dxM. (OM) — Vs. 15.
l. p. sq. com. pre, et S. Eduardi C. A.
-
13. **Dom. 18.** p. Pent. (3 Oct.) De ea, sdx, 16.
com. S. C, suf; „Quicumq“, prec. — 2 or. Vir.
S. C, 3 „A cunct“, Cr, Pf. Trin. — In Vs.
com. sq, et S. C.
14. F. 2. S. Callisti PM, dx. (OM) — Vs. cap. 17.
sq. (hymn. ppr.) com. pre. R,
15. F. 3. S. Teresiae V, dx. (OM) — In Vs. 18.
com. sq. A.
16. F. 4. S. Hedwigis Vid, sdx. (OM) suf; 19.
⊙ ■ prec. — 2 or. „A cunct“, 3 ad lib. — Vs. A.
sq. com. pre.
17. F. 5. S. Margaritae Mae Alac. V, dx. (OM) 20.
— Vs. sq. (OF) com. pre. A.
18. F. 6. S. Lucae Ev, 2 Cl. (OF) — IO, Cr, 21.
Pf. Ap. — In Vs. com. sq. R.
19. Sab. S. Petri Alc. CON, dxM. (m. t. v, 22.
l. p. OM) — Vs. sq. com. pre, et S. Joannis C. A.
- Arch. Cracov.** Vs. sq. (OF, hymn. „Gentis”
com. Dom. ttm.
-
20. **Dom. 19.** p. Pent. (4 Oct.) De ea, sdx, 23.
com. S. C. — 2 or. S. C, 3 pro fidei pro- vir.
pagat, Cr, Pf. Trin. — In Vs. com. sq,

S. C, S. Hilarion. Abb, et Ss. Ursulae
Vv. Mm.

Archid. Cracov. S. Joannis Cant, C, 1 Cl. (OF, hymn. Mat. „Corpus”) L1N. *Beatus vir*, (hymn Ld. „Te deprec”.) 9 l. com. Dom. — 2 or. Dom, 3 pro fidei propag, IO, Cr, Pf. Tr, UED. — In Vs. (hymn. „Gentis”) com. sq, et Dom. ttm.

21. F. 2. B. Jacobi de Str, EC. ON, sdx. (m. 24.
⊙ ■ t. v, OM; *Archid. Crac.* L1N. et RR. e Dom.) A.
9 l. com. S. Abb, et Ss. Vv. Mm, suf;
prec. — 2 or. S. Abb, 3 Ss. Vv. Mm. —
In Vs. ttm, suf. — Compl. prec.

Dioec. Tarnov. Vs. sq. (OF) ttm.

22. F. 3. De ea, spl, (OS), Abs. et Ben. 2 25.
⊙ ■ Noct, sine „Te Deum”, (or. Dom. prec,) suf; vir.
„Pacem”, prec. — (*Arch. Crac.* Mis. Conv.
[p. Sx.] Prohib. vot. et quotid. Req.) Mis.
Dom, sine Gl. et Cr, 2 or. „A cunct”, 3 „Fi-
delium”, 4 ad lib, IO, Pf. cnis, Ben. Dno. —
Extra Arch. Crac. Mis. Conv. (p. Prm.)
pro dfctis. — In Vs, suf. — Compl. prec.

Dioec. Tarnov. Dedicatio Eccl. Cathed, 1 Cl. A.
(OF) — IO, Cr. — In Vs. (OF) ttm.

23. F. 4. De ea, sp, Abs. et Ben. 3 Noct, etc. 26.
⊙ ■ ut heri. — 2 or. „A cunct”, 3 ad lib. etc. vir.
ut heri. — (Conv. (p. Sx.) ut in Rubr;
Arch. Crac.: Mis. Conv. pro dfctis; p. Prm.)
— Vs. sq. (OF) ttm.
24. F. 5. S. Raphaelis Arch. dxM. (OF) — 27.
Cr. — In Vs. com. sq. — CD. A.
25. F. 6. Ss. Chrysanti et Dariae Mm. spl. 28.
⊙ ■ (OS), suf; prec. — (p. Sx.) 2 or, „A cunct,” R.

- 3 ad lib. — Vs. fer. com. S. Evaristi PM.
ttm, suf. — Compl. prec.
26. Sab. Vigil. Ss. Ap, spl, (OS) L. ppr, RR. 29.
e Sab, sine „Te Deum“, Ld. 2^o lo, prec. V.
fer. fl. gen. per oes Hor, com. S. PM, suf;
ad Prim. 4 ps, „Pacem“. — (p. Nn.) sine
„Gl“, 2 or. S. PM, 3 „Concede“, Pf. cnis,
Ben. Dno. — Vs. sq. (OF) com. Dom. —
Dox. et V. Prm. ppr. — Cras consecr.
omnium SSmo Cordi Jesu.
-
27. **Dom. 20.** p. Pent. (5 Oct.) **Christi Rēgis**, 30.
1 Cl. (OF) 9 l. com. Dom. — 2 or. Dom, IO, A.
Cr, Pf. ppr, UED. — In Vs. com. sq, et Dom.
28. F. 2. Ss. Simonis et Judae Ap, 2 Cl. (OF) 1.
— IO, Cr, Pf. Ap. — In Vs. R.
29. F. 3. De ea, spl, Abs. et Ben. 2 Noct, 2.
L. et RR. e Dom, sine „Te Deum“, suf; vir.
„Pacem“, prec. — (p. Sx; prohib. vot. et
quot. Req.) Mis. Dom. 20, 2 or. „A cunct“,
3 ad lib, sine Gl. et Cr, Pf. cnis, Ben.
Dno. — Vs. sq.
30. F. 4. B. Angeli ab Acr. CON, dx. (OM) 3.
l. p. L1N. fer. 2, RR. fer. 4. — In Vs. com. sq. A.
31. F. 5. (Vig, ieiun.) Bb. Christophori et Tho- 4.
mae Cc. ON, sdx. (OM) L1N. e fer. 3, RR. A.
fer. 5, 9 l. com. Vig; (suf. omitt.); ad Prm.
prec. — 2 or. Vig, 3 Spir. S, UE. Vig. —
Mis. Conv. de Vig. (viol; p. Nn.) sine Gl.
et Cr, 2 or. Bb. Cc, 3 Spir. S, Pf. cnis,
Ben. Dno. — Vs. sq. (OF) ttm.

November

1. F. 6. **Omnium Sanctorum**, 1 Cl. cum 5.
 A. G. Oct. cni. (OF) — IO, Cr, — In Vs.; p. A.
 I. P. „Ben Dno“ Vs. dfctor. (dx.) et Compl.

Hodie a merid. et cras Indulg. plen. „tot. quot.“
 pro Dfetis; condition.: Confess, Communio, in
 visit. eccl. oratio ad mentem Papae (6 Pater,
 Ave, Gloria). — Cras oa Altaria privil. — Tres
 Missae (duae sine stip.: alia pro OO. dfctis,
 alia ad ment. S. Pontif.) eodem modo, ut in
 Nativ. Dni. — Si unica dicitur, prima sumatur.
 Missa cum cantu *prima* sumenda est, etiam
 anticipatis secunda et tertia lectis. — In casu
 funeris oratio pro dfcto sumenda est sub una
 conclus. cum orat. I Missae. — Sacerd. caecu-
 tiens ter legere potest Mis. quotid. repetendo
 unic. orat. *Fidelium*, sine „Sequent.“ (S. C. R.
 12 Jan. 1921.) — Ad S. Com. stola viol.

2. Sab. Commemoratio OO. Fid. Defunct, 6.
 dx, Off. ppr. — (p. Nn.) Seq, Pf. def. — N.
 Vs. sq. com. B. Raynerii C, et oct. (e I Vs.).

3. **Dom. 21.** p. Pent. (1 Nov.) De ea, sdx, 7.
 com. B. C, et oct. — 2 or. B. C, 3 oct, vir.
 Cr, Pf. Tr. — In Vs. com. sq, B. C, oct,
 et Ss. Vitalis Mm.
4. F. 2. S. Caroli EC, dx. (OM) 9 I Ss. Mm, 8.
 com. oct, et Ss. Mm. — 2 or. oct, 3 Ss. A.
 Mm, Cr. — Vs. sq. com. prc, et oct.
5. F. 3. Sacr. Reliq. in eccl. n, dxM. (OM) 9.
 com. oct. — 2 or. oct, Cr. — In Vs. com. R.
 sq, et oct.

6. F. 4. B. Margaritae Vid. 2. O, sdx. (OM) 10.
 ☉ ■ com. oct. — 2 or. oct, 3 Spir. S, Cr. — A.
 Vs. cap. sq, com. prc, et oct.
7. F. 5. B. Helenae V. 2. O, sdx. (OM) com. 11.
 ☉ ■ oct. — ut die 6. — Vs. sq. com. prc, et A.
 Ss. Quat. Coronat. Mm.

Dioec. Plocer.: Vs. sq. com. oct. (e I Vs.).

8. F. 6. Octava OO. Sanct, dxM. (OM) 9 l. 12.
 com. Ss. Mm. — 2 or. Ss. Mm, Cr. — Vs. A.
 sq. com. prc.

Dioec. Ploc.: Dedicatio Eccl. Cathedr, 1 Cl. A.
 (OF) com. oct. — 2 or. oct, IO, Cr. — In Vs.
 com, sq. (or. 2^o lo.), et oct.

9. Sab. Dedicatio Archibasil. SS. Salv, 2 Cl. 13.
 (OF) 9 l. com. S. Theodori M. — (2 or. A.
 in priv. S. M.) IO, Cr. — In Vs. com. sq,
 et S. Andreae C.

-
10. **Dom. 22.** p. Pent. (3 Nov.) De ea, sdx, 14.
 com. S. C, et Ss. Tryphonis Mm. — 2 or. vir.
 S. C, 3 Ss. Mm, Cr, Pf. Trin. — In Vs.
 com. sq. (ppr.), S. C, et S. Mennae M.
11. F. 2. S. Martini EC, dx (OF; ps. Mat. ut 15.
 ibi) 9 l. com. S. M.; ad Hor. (OM) — A.
 2 or. S. M. — In Vs. (OF) com. sq, et S.
 Martini PM. — CF.
12. F. 3. B. Gabrielis Ferr. CON, sdx. (OM) 16.
 ☉ ■ 9 l. com. S. PM, suf; prec. — 2 or. S. A.
 PM, 3 A cunct. — Vs. sq. com. prc,
 et S. PM.
13. F. 4. S. Didaci CON, dxM. (OM) L&N. 17.
 l. p. ppr. — In Vs. com. sq. A.

14. F. 5. S. Josaphat EM, dx. (OM) — Vs. 18.
l. p. cap. sq. „O Doct,“ com. prc. R.
15. F. 6. S. Alberti Magni ECD, dx. (OM) — 19.
Cr. — Vs. sq. com. prc, et S. Gertrudis V. A.
16. Sab. S. Agnetis Ass. V. 2. O, dxM. (OM) 20.
l. p. 9 l. com. S. V. — 2 or. S. V. (Secr. et A.
Postcom. S. Agn. de „Loquebar“, omissis:
Martyris, Martyre) — Vs. sq. com. prc,
B. Salomeae V, S. V. (V. „Adiuuabit“),
et S. Gregorii EC.
-
17. **Dom. 23.** p. Pent. (4 Nov.) De ea, sdx, 21.
com. B. V, et S. EC, suf; „Quicumq“, vir.
prec. — 2 or. B. V, 3 S. EC, Cr, Pf. Tr.
— Vs. sq. (OF) com. prc, B. V, et S. EC.
18. F. 2. Dedicatio Basil. Ss. Ap, dxM. (OF) 22.
L3N. de Oct. Dedic. — Cr. — Vs. sq. (OF) A.
„Ora“, com. prc. ttm. — CD.
19. F. 3. Elisabeth Vid. 3. O, 2 Cl. (ap. Tert. 23.
A. G. 1 Cl. cum Oct. comm. de qua quotid. A.
l. p. com. in Vs, Ld, Mis. et Cr; hodie omissa
com. S. Pont. PM.) — (OF) 9 l. com. S.
Pontiani PM. — (2 or. in priv. S. PM.)
IO, Cr. — In Vs. com. sq.
20. F. 4. S. Felicis de Val. C, dx. (m. t. v, 24.
OM) L1N: „Inc. Joel“, RR. e fer. 4. — A.
Vs. sq. (OF, ant. ppr.) com. prc. — Dox.
et V. Prm. BMV.

Ap. Felic. Vs. sq. (ppr.) com. prc.

21. F. 5. Praesentatio BMV, dxM. (OF) — Cr, 25.
A. G. Pf. BMV. — In Vs. com. sq. (ppr.). A.

Ap. Felic.:... 2 Cl. cum Oct. simpl. — IO.

22. F. 6. S. Caeciliae VM, dx. (OF), ad Hor. 26. (OM) — Vs. (OF), cap. sq. (ppr.) com. R. prec, et S. Felicitatis M. — CF.
23. Sab. S. Clementis PM, dx. (OM) L1N: 1 27. „Inc. Amos“, 2 „Inc. Abdias“, 3 „Inc. Jo- R. nas“, RR. Sab, Ld. (OF), 9 l. com. S. Fel. M. — 2 or. S. Fel. M. — Vs. sq. com. prc, S. Joannis CD. „O Doct,“ et S. Chrysogoni M.
-
24. **Dom. 24.** ult. p. Pent. (5 Nov.) De ea, 28. sdx, com. S. CD, et S. M. — 2 or. S. CD, vir. 3 S. M, Cr, Pf. Tr. — In Vs. com. sq, et S. CD.
25. F. 2. S. Catharinae VM, dx. (OM) — Vs. 29. A. 6. sq. com. prc, S. Silvestri Abb, et S. Petri R. Alex. EM.
- Ap. Tert.** Vs. sq. (OM) com. prc, S. Leonardi C, S. Silv. Abb, et S. Petri EM.
26. F. 3. S. Leonardi a P. Maur. CON, dxM. 1. l. p. (OM) 9 l. com. S. Abb, et S. EM. — 2 or. A. S. Abb, 3 S. EM. — In Vs. com. sq, et S. Abb. (V. „Os justi“.)
- Ap. Tert.: Octava S. Elisabeth** Vid, dxM. A. (OM) 9 l. com. S. Leon. C, S. Silv. Abb, et S. Petri EM. — 2 or. S. C, 3 S. Abb, 4 S. EM, IO, Cr. — In Vs. com. sq, S. Leon. C, et Silv. Abb. (V. „Os justi“.)
27. F. 4. B. Bernardini a Fos. CON, sdx. (OM) 2. ☉ ■ suf; prec. — 2 or. „A cunct“, 3 ad lib. A. — Vs. sq. com. prc.
- Ap. Felician.:** Ad Vs. addit. com. Oct, Praesent. BMV.; — etiam cras in Ld. et Mis. cum „Cr.“ et Pf. BMV. — Dox. et V. Prm. BMV.

28. F. 5. S. Jacobi de Mar. CON, dxM. (OM) 3.
 l. p. L1N: 1 „Inc. Agg,“ 2 „Inc. Zachar,“ 3 A.
 „Inc. Malach“, RR. e fer. 5. — Vs. sq.
 com. prec.

Cras pro FFr. renovant. Professionem alia I. P.

29. F. 6. (Vig.) Omnium Sanct. Ord. Seraph, 4.
 l. p. 2 Cl. (OF) L. oes ppr. noviss, 9 l. com. A.
 Vig, et S. Saturnini M. — (p. Tt.) 2 or.
 Vig, (3 in priv. S. M.) IO, Cr, Pf. S. P.
 Franc, UE. Vig. — (Prohib. Mis. priv. de
 Vig.) — Vs. sq. (ppr.) com. prec.
 30. Sab. S. Andreae Ap, 2 Cl. (OF) — IO, 5.
 Cr, Pf. Ap. — In Vs. com. sq, et B. Anto- R.
 nii CON. — Antiph.: **Alma**.

December

Cessant „Suffr.“ usq. ad Oct. Epiph. — Ex im-
 memor. consuet. cantatur in Polonia temp. Adv.
 in aurora Mis. vot. „Rorate“ (alb.) Gl, or. unica,
 Cr, Pf. „Et te in venerat.“; (consulant. prae-
 scrip. dioecesana).

1. **Dom. 1 Adventus**, De ea, 1 Cl. sdx, 6.
 R. 1 L. ut ibi, com. B. C; V. Prm. ppr. V.
 quotid, prec. — sine Gl, 2 or. B. C, 3
 „Deus, qui de B,“ IO, Cr, Pf. Tr, Ben.
 Dno. — In Vs. com. sq, et B. C. —
 Compl. prec.

2. F. 2. S. Bibianae VM, sdx. (OM) com. 7.
 ◉ ■ fer; prec. ad Prim. — 2 or. fer, 3 „Deus R.
 q.“ — Vs. sq. com. prc, et fer.

Suffr. pro dñctis FFr. et Benefact.

3. F. 3. S. Francisci Xav. C, dxM. (OM) 8.
 com. fer. — 2 or. fer. — In Vs. com. sq. A.
 „O Doct“, fer, et S. Barbarae VM.
4. F. 4. S. Petri Chrysol. ECD, dx. (m. t. v, 9.
 OM) com. fer, et S. VM. — 2 or. fer, 3 A.
 S. VM, Cr. — In Vs. com. sq, fer, et S.
 Sabbae Abb.
5. F. 5. B. Nicolai de Tarv. MON, sdx. (OM) 10.
 ◉ ■ com. fer, et S. Abb; prec. — 2 or. fer, 3 R.
 S. Abb. — Vs. sq. com. prc, et fer.
6. F. 6. S. Nicolai EC, dx. (OM) com. fer. 11.
 — 2 or. fer. — Vs. cap. sq. (m. t. v.) A.
 „O Doct“, com. prc, et fer.
7. Sab. (Vig; iejun.) S. Ambrosii ECD, dx. 12.
 (OM) com. fer. (de Vig. nih.) — 2 or. fer, A.
 3 Vig, Cr, UE. Vig. — Mis. Conv. de Vig,
 (viol; p. Nn. sine Gl, 2 or. S. ECD, 3 fer, Pf.
 cnis, Ben. Dno. — Vs. sq. (OF) com. Dom.
 ttm. — Dox. et V. Prm. BMV. per Oct.
-
8. **Dom. 2 Adv. Conceptio Immac. BMV. 13.**
 A. G. **Patr. O. N,** 1 Cl. cum Oct. privil. III A.
 l. p. Ord. (OF) 9 l. com. Dom. — 2 or Dom, 10, Cr,
 Pf BMV, UED. — In Vs. com. Dom. — CD.

Per Oct. prohib. Mis. vot. et priv. quotid.
 Defct.; praet. Conv celebrari poss. reliq. Missae
 de Imm. Conc. cum Gl. et Cr, except. 1 et 2 Cl.
 ac Domin.

9. F. 2. De 2 die Oct, sdx. (OM) com. fer. 14.
 — 2 or. fer, 3 Spir. S, IO, Cr, Pf. BMV. A.
 — In Vs. (OM) com. fer, et S. Melchias PM.

Cracoviae, PP. Capuc. Vs. sq. (OF, ppr),
 com. fer, et S. Melch. PM.

10. F. 3. De 3 die Oct, sdx. (OM) com. fer, et S. 15.
 PM. — 2 or. fer, 3 S. PM, IO, Cr, Pf. A.
 oct. — Vs. sq. com. oct, et fer.

Crac: Transl. Domus Laur, dxM. (OF) ppr, com. A.
 fer, et S. PM. — 2 or. fer, 3 S. PM, IO, Cr, Pf.
 „Et te in festiv.” — In Vs. com. sq, et fer. — CD.

11. F. 4. S. Damasi PC, sdx. (OM) com. oct, 16.
 et fer. — 2 or. oct, 3 fer, IO, Cr, Pf. oct. A.
 — Vs. sq. (ppr.) com. prc, oct, et fer.

12. F. 5. Inventio Corp. S. PN. Francisci, dxM. 17.
 l. p. (OF) ppr, com. oct, et fer. — 2 or. oct, A.
 3 fer, IO, Cr, Pf. ppr. — In Vs. com. sq.
 (ppr.), oct, et fer. — CD.

13. F. 6. S. Lucia VM, dx. (OM); Ld. (OF), 18.
 com. oct, et fer. — 2 or. oct, 3 fer, IO, R.
 Cr, Pf. oct. — In Vs. (OF) com. sq, oct,
 et fer. — CF.

14. Sab. B. Conradi CON, sdx. (m. t. v, OM) 19.
 com. oct, et fer. — 2 or. oct, 3 fer, IO, A.
 Cr, Pf. oct. — Vs. sq. (ant. e Ld. Dom.)
 com. prc, et oct. (e I Vs.) — (Ab his
 Vs. ad crast. Compl. Dox. et V. Prm.
 ppr, non Oct.).

15. **Dom. 3 Adv.** De ea, 2 Cl. sdx, Invit. 20.
 „Prope“, com. oct. — sine Gl, 2 or. oct, V.

IO, Cr, Pf. Tr, Ben. Dno. — In Vs. com. sq, et oct.

16. F. 2. S. Eusebii EM, sdx. (OM) 8 R. „Do- 21.
 ☉ ■ mine praeu.“, com. fer; ad Prm. prec. — R.
 2 or. fer, 3 „Deus“. — In Vs. com. fer.
 — Compl. prec.

A crast. ad Vig. Nat. Dni cessant Mis. priv. vot.
 et priv. quot. Defetor.

17. F. 3. De ea, spl, 1N, sine „Te Deum“, 22.
 Ld. 2^o lo, ant. ppr, prec. fer. flex. gen. V.
 per oes Hor; ad Prm. (ant. e Ld.) 4 ps,
 „Pacem“. — (p. Nn.) Mis. Dom. prec. (post
 Grad. omitt. Allel. et V. sq.) sine Gl. et
 Cr, 2 or. „Deus“, 3 Eccl. v. Pp, Pf. cnis,
 Ben. Dno. — Vs. fer, ad Magn. *O Sa-*
pientia (duplic.), prec. fer. etiam in Compl.
18. F. 4. (Q. T.) De ea, spl. ut heri, ps. 23.
 7—9 2^o lo. — (p. Nn.) Mis. ppr, Proph, V.
 sine Gl. et Cr, 2 or. „Deus“, 3 Eccl. v. Pp,
 Ben. Dno. — Vs. fer. *O Adonai* (dupl.),
 prec. fer. (fl. gen.)
19. F. 5. De ea, spl. (OS) sine „Te D.“ etc. 24.
 ut die 17. — Vs. fer, *O Radix* (dupl.), V.
 prec. fer. (fl. gen.).
20. F. 6. (Q. T, Vig.) De ea, spl, ut heri (de 25.
 Vig. nihil) — (p. Nn.) Mis. ppr, sine Gl. V.
 et Cr, 2 or. Vig, 3 „Deus“, Ben. Dno, UE.
 Vig. — (Mis. de fer. v. de Vig, UE. Vig.
 v. Fer.) — Vs. sq. (OF, ant. ppr.) com. fer.
O Clavis.
21. Sab. (Q. T.) S. Thomae Ap. 2 Cl. (OF) 9 l. 26.
 com. fer.: „Nolite timere“. — 2 or. fer, R.

IO, Cr, Pf. Ap, UEF. — In Vs. com. Dom.
O Oriens. — CD.

-
22. **Dom. 4 Adv.** De ea, 2 Cl. sdx; ad Prim. 27.
 prec. — sine Gl, 2 or. *Deus*, 3 Eccl. v. V.
 Pp, IO, Cr, Pf. Trin, Ben. Dno. — In Vs.
O Rex (dupl.) — Compl. prec.
23. F. 2. De ea, spl, 1N, Ld. 2^o lo, (ant. ppr.) 28.
 ad Bened.: „Ecce completa“, prec. fer. V.
 fl. gen. ad oes Hor; ad Prm (ant. e ppr.)
 4 ps, „Pacem“. — (p. Nn.) Mis. Dom. sine
 Gl. et Cr, 2 or. *Deus*, 3 Eccl. v. Pp, (post
 Grad. omitt. Allel. et V. sq.) Pf. cnis, Ben.
 Dno. — In Vs. *O Emmanuel* (duplic.)
 prec. fer. et ad Compl. — Cras Martyrolog.
 canitur solemniter.
24. F. 3. Vigilia Nativ. J. Chr, 1 Cl. spl, (OS) 29.
 Invit. etc. ppr; ad Ld. et Hor. (OF, dx.) V.
 — (p. Nn.) sine Gl, or. unica, Pf. cnis,
 Ben. Dno. — Vs. sq. (OF) — Dox. et V.
 Prm. BMV. ad Vig. Epiph.

Post „Alma“ vers.: „Post partum“ et or. ppr.
 — Ben. mensae ppr. — Cras qui unam celebr.
 Mis, in nocte I, in aurora II, postea III celebr.
 debet. — In 1 et 2 Missa, sumpto SS. Sanguine,
 Calix non purificatur, nec abstergitur; dicto
 „Quod ore“ digitos abluit in alio vase dicens
 „Corpus tuum“; in 2 et 3 Missa Calix non col-
 locatur extra corporale, nec abstergitur ad Of-
 fertorium. — In sacellis Instit. relig, ubi asserv.
 SSmum, legi possunt in nocte 3 Mis. et S. Com.
 distrib. — Renov. Professionis.

25. F. 4. **Nativitatis Domini**, 1 Cl, cum 30.
 l. f. Oct. privil. (OF) — IO, Cr, Pf. et Cmets A.
 l. p. ppr. per Oct; in II Mis 2 or. S. Anastasiae M; in III UE. Epiph. — In Vs. com. sq. — CD.

26. F. 5. S. Stephani Protom, 2 Cl. cum Oct. 1.
 spl. (OF), com. Nat. — 2 or. Nat, IO, Cr, R.
 Pf. et Cmets Nat. — Vs. Nat. cap. prc, com. sq, et Nat. — (Cras bened. vini.)

Lublin: Vs. Nat. cap. sq. com. prc, et Nat.

27. F. 6. S. Joannis Ap, 2 Cl. cum Oct. spl. 2.
 (OF), com. Nat. — In Mis. ut heri. — Vs. A.
 Nat. cap. prc, com. sq, et Nat.

Lublin: ... 1 Cl. (OF) Tit. Eccl. Cathedr; in Off.
 et Mis. ut supra.

28. Sab. Ss. Innocentium, 2 Cl. cum Oct. spl. 3.
 (OF), sine „Te Deum“, com. Nat. — sine V.
 Gl, or. etc. ut 26, Ben. Dno. — Vs. Nat.
 cap. prc, com. sq, S. Thomae EM, et Nat.
 — CD.

29. **Dom. Infr. Oct**, sdx. (OF) de Nat. et 4.
 ppr, L1N. „Inc. ad Rom.“ (e 29 Dec.) com. A.
 S. EM, et Nat. — 2 or. S. EM, 3 Nat. etc.
 ut 26. — Vs. Nat. cap. Dom. com. sq.
 („Prudent. Virg.“) et Nat.

30. F. 2. Bb. Margaritae et Matthiae Vv. 2. 5.
 O, sdx. (OM) L1N. „ad Rom. e 30 Dec; A.
 „Prud. Virg.“ com. Nat. — 2 or. Nat, 3
 „Deus, q.“ IO, etc. ut 26. — Vs. Nat. (dx.)
 cap. sq. com. prc, et Nat.

31. F. 3. S. Silvestri PC, dx. (OM) L1N. „ad 6. Rom.“ com. Nat. — 2 or. Nat. etc. ut 26. A. — Vs. sq. (OF) ppr. ttm. — CD.

Litt. Martyrologii pro anno seq.: f.
Canitur hodie sero „Te Deum“ in gratiar.
actionem.

Laus Deo.

CASUS MORALES PRO ANNO 1935.

I. Ioannes, parochus cuiusdam oppiduli, assuetus bibere cum amicis fere usque ad mediam noctem, quodam die festo dubitat utrum biberit ante vel post mediam noctem ipsam; nihilominus rem divinam peragit inquiens. Dominica est, et populum absque Missa deserere nequeo. Insuper, in dubio mellor est conditio possidentis.

Quaeritur:

1.^o Quid sit conscientia dubia, et an sit regula morum?

2.^o An fieri possit moraliter certa et quibus mediis?

3.^o Utrum Ioannes recte ratiocinatus sit, recteque se gessit?

De re liturg. Quaerit Sylvius Sacerdos a Caeremoniario Roberto: Quid significet *Invitatorium*, quid de pristino eius usu, et quare omitatur in festo Epiphaniae, triduo mortis Christi ac hymni die sancto Paschae?

Quaenam Roberti responsio per singula?

II. Dominicus pater familias, dispensationem ab abstinentia a carnibus diebus vetitis pro filio infirmo obtinuit, et ad omnes familiae personas extendit dicens: Non possum duo prandia diversa parare ac nolo; nec satis: cogit uxorem a filio non recedere neque tempore audiendi sacrum die festo.

Quaeritur:

1.^o An tota familia Dominici licite carnibus vesci possit?

2.^o Utrum Dominici uxor excusatur ab auditione Missae diebus festivis?

3.^o Quid dicendum de agenti ratione Dominici?

Lit. Ernestus putans errare Calendarium eo quod non semper in omnibus Officiis ferialibus et semiduplicibus indicetur *Suffragium Sancto-*

rum, quaerit a Calendarista Ioanne, quando Suffragium dicendum et qua ratione. Quid respondit Ioannes?

III. Petrus sacerdos, Paulusque eius consobrinus saecularis, nimium timentes ne in bello vitam amitterent, ut a militiae lege eximerentur, quandam pecuniae summam medico visenti tradiderunt, ut eos minime idoneos militiae declararet. Bello absoluto, confessarium adeunt, ab ipsoque quaerunt:

1.^o An lex militiae omnes cives indistincte, idest, nemine excepto, obliget?

2.^o Utrum libeat corrumpere medicum visitatorem?

3.^o In casu negativo, ad quid singuli eorum et ipse medicus teneantur?

Lit. Disputant Honorius et Iacobus de oratione super populum in Quadragesima; ille asserit dicendam esse non solum in Missa Officii ferialis, sed etiam in Missa Officii duplicis et semiduplicis; iste vero in Missa Officii ferialis tantum dicendam. Utri ratio tibuenda? Quid haec oratio significet, et quare non dicatur in Missa Dominicae?

IV. Virgilius eiusque soror Maria saepe mensis circulatoriis ac spiritismo assistunt. Primus quidem active, manus admovendo, tabulas interrogando, spiritus consulendo, ab ipsisque responsa obtinendo: secunda vero tantum passive ad curiositatem satisfaciendam.

Quaeritur:

1.^o Quid sentiendum de mensis circulatoriis ac de spiritismo?

2.^o An graviter peccet qui iis adstant active?

3.^o An saltem passive absque culpa iis quis adesse possit?

Lit. Maevinus Sacerdos multa deprehendit in functionibus Sabbati Sancti quae sibi incongruae videntur. Ideo a te quaerit: Quid benedictio ignis

cum reliquis functionibus? Quare in Praefatione dicitur — *In hac potissimum nocte.* — Quid illi respondebis?

V. Anselmus, ut a proprio episcopo obtineat paroeciam vacantem, coram ipso studia olim facta, gradus academicos consecutos, varia officia diligenter exercita, aliaque huiusmodi exponit. Insuper promittit se gratum fore, et quandam pecuniae summam pauperibus paroeciae erogare. Nec satis. Cubiculario eiusdem centum dat libellas, ut pro ipso apud dominum suum intercedat: quod ipse praestat, sicque paroeciam obtinet.

Quaeritur:

1.^o Quid nomine simoniae veniat, et quale peccatum?

2.^o Utrum Anselmus simoniae labe infectus sit: in casu affirmativo, ex qua ratione?

3.^o Quae poenae statutae sint in simoniacos?

Lit. In quadam Ecclesia apponuntur *castro doloris* vasa florum et palmarum; in alia vero rami cupressi tantum. Quid de huiusmodi usu dicendum et quare?

VI. Aloysius, quindecim annos natus, nondum baptizatus, Caeciliam baptizatam eiusdem aetatis, simplici voto castitatis perfectae ligatam, matrimonio sibi copulavit, tamen cum pacto petito a Caecilia, numquam se cognoscendi.

Quaeritur:

1.^o An vota simplicia matrimonia irritent, vel saltem reddant illicita?

2.^o An validum fuerit Aloysii matrimonium?

3.^o In casu negativo, ex quibus capitibus?

Lit. In aliquibus Regularium Ecclesiis in actu benedictionis cum Ostensorio ter Sanctissimum incensatur a Clerico *genuflexo*; qui proinde idipsum praestat *stando* quando benedictio datur cum sacra Reliquia. Probanda non haec agendi ratio, et quare?

VII. Antonius, voto castitatis ligatus, facta Luciae promissione matrimonii, eam defloravit

et proles secuta est. Postea vero uxorem eam ducere renuit.

Quaeritur:

1.^o Quid sit stuprum, quidque stuprator restituere debeat defloratae eiusque parentibus, et ad quid teneatur erga prolem?

2.^o Utrum poenis ecclesiasticis plectantur stupratores?

3.^o An excusari possit Antonius a contrahendo matrimonio cum Lucia ex ratione emissi voti?

Lit. Ambrosius neo-Sacerdos petit a Tiburtio viro liturgico, quid discriminis est inter preces Dominicales et feriales, quando et quomodo dicendae? Quanam Tiburtii responsio?

VIII. Gervasius noctu ecclesiam aperit et vasa sacra furatur; particulas consecratas super altare reverenter ponit. Intra se dicit; Furtum non facio, quia omnia sunt communia.

Quaeritur:

1.^o Quotuplicis generis sint circumstantiae actus humani?

2.^o Quot peccata Gervasius commisit?

3.^o Quid sentieadum de principio a Gervasio in medium allato?

4.^o Estne poena canonica incursa a Gervasio?

Lit. Antonius et Evaristus Subdiaconi non eodem modo sustinent patenam in Missa solemni; ille namque eam tenet manu dextera sine purificatorio veli extremitate coopertam; iste vero cum purificatorio utraque veli extremitate coopertam. Ille vel iste bene agit? In quibus Missis patena tenetur a Subdiacono, et qua de causa?

IX. Carolus confessarius, cuidam iuveni cubiculum suum ingresso ad se confitendum, iamque ante se provoluto, dicit: Quam pulcher es! tua pulchritudine captus sum: experior erga te tentationes! tu ne simulter experiris erga me? Et interim manus eius inter suas mollior tenet.

Quaeritur:

1.^o Quid sit, quibusque modis patrari possit sollicitatio?

2.^o Quot et quatenus sint clausulae sollicitationis obligantis ad denuntiationem?

3.^o Utrum Carolus sollicitator dici possit, et in casu affirmativo, quibus poenis sit obnoxius?

Lit. In variis Ecclesiis Parochialibus et Regularium nocte Nativitatis Domini ministratur Communio et post Missam solemnem leguntur aliae immediate. Licitum ne ministrare sacram Communionem in publicis Ecclesiis et legere immediate post solemnem secundam et tertiam Missam?

X. Lucius libros, quacumque ratione ab Ecclesia prohibitos, libere legit, quia, ut ipse ait, nullum ex his periculum pertimescit.

Quaeritur:

1.^o Licitane est Lucii lectio? In casu negativo:

2.^o An prohibita sit sub culpa et quam; vel etiam sub poena?

3.^o Quatenus sit poena contra legentes libros prohibitos, et utrum Lucius eam incurrerit?

Lit. Mos est in quodam loco, ut die qua peragitur funus alicuius defuncti, praeter Missam solemnem exequialem, aliae quoque cantentur pro eodem defuncto. Licitum ne in eadem Ecclesia plures Missas canere pro eodem defuncto, et in Festo alicuius Sancti duas vel tres Missas canere in eiusdem Sancti honorem?

XI. Robertus confessarius domum Silviae ingreditur, cumque esse solam conspiciat, eam amplectatur, osculatur, cum ea, externe renuente, interne tamen consentiente, rem habet. Quia vero ipsa erubescit peccatum suum in confessione pandere, ipsemet ibi eius confessionem excipit, eamque absolvit.

Quaeritur:

1.^o An absolutio Roberti licita ac valida fuerit?

2.^o Utrum Robertus inter absolventes complicem in peccato turpi adnumerandus sit; et ideo poenas contra eos statutas obnoxius?

3.^o An licitum sit mulierum confesssiones excipere extra locum ad confessiones excipiendas statutum?

Lit. Missae, quae fidelibus petentibus cani solent infra octiduum defunctorum, si impediuntur, transferri ne possunt post octiduum? Quid de oratione *Fidelium*, si prima die mensis et feria secunda cuiusque hebdomadae temp. Quadrages. impediatur, transferri ne potest et quo ordine dicenda ex nova Rubrica?

XII. Hedwigis, abbatissa cuiusdam monasterii, Iosepho confessario inter alios defectus, abusus qui in manasterio regnant, quos ipsa ex quadam negligentia non correxit, et virtutes suae vicariae in confessione pandit. Agatha, pia mulier, quae astat et ad excipiendas confessiones proxima est, omnia audit ac sorori suae manifestat. Ista, ut certior fiat, confessarium interrogat utrum vera sint quae a sorore audivit. Ioseph, ei silentium indicens, signo capitis confirmat.

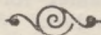
Quaeritur:

1.^o Quid veniat nomine sigilli confessionis, et quod peccata committit, qui ipsum violat?

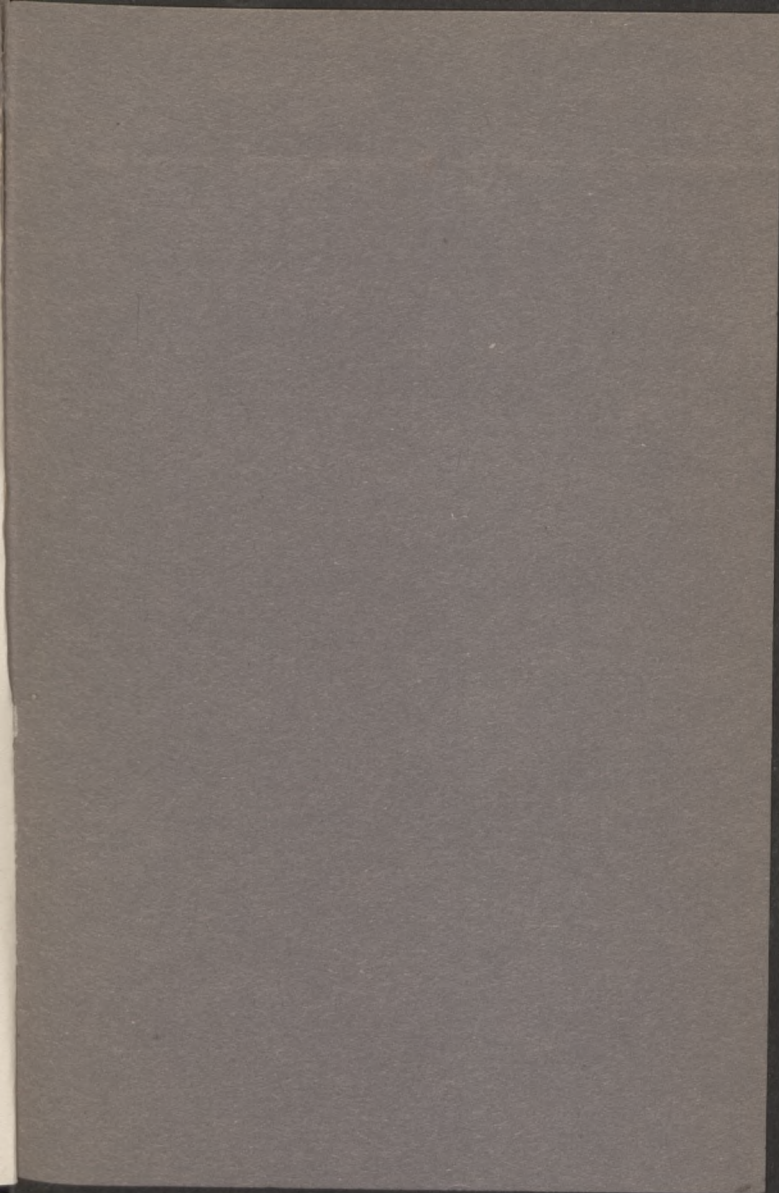
2.^o An violatores sigilli sacramentalis fuerunt Agatha et confessarius?

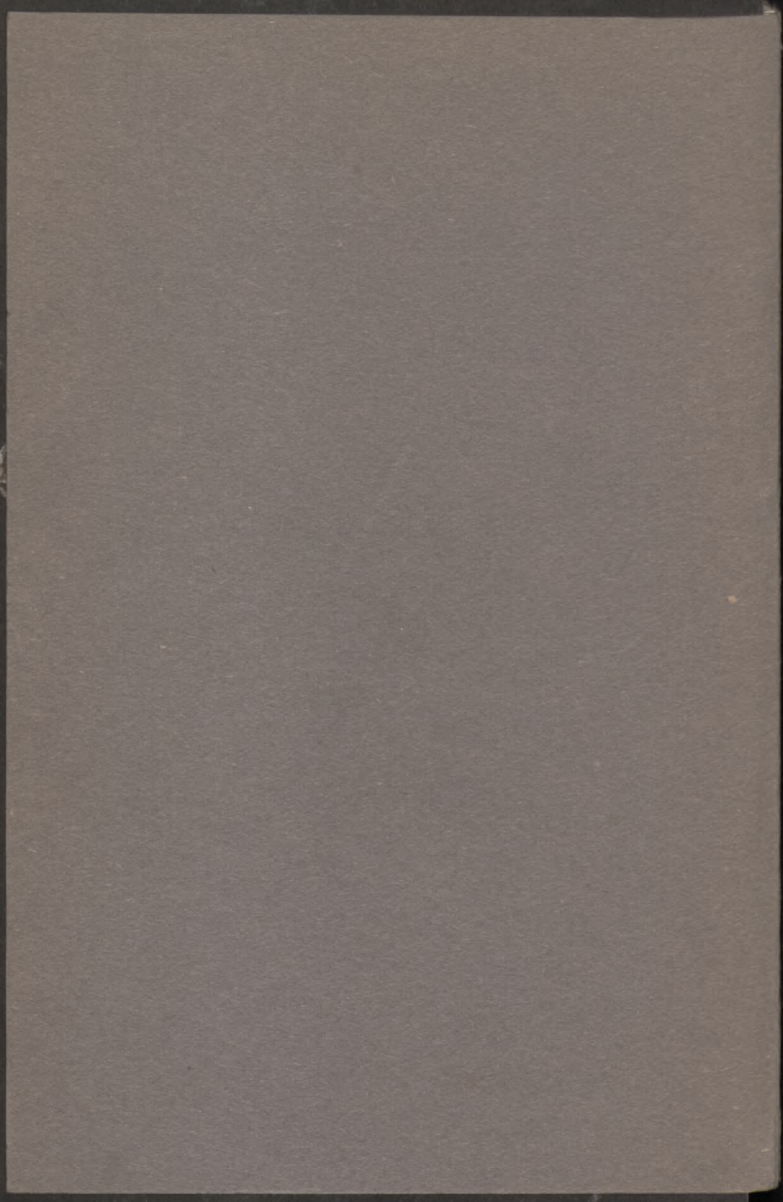
3.^o In casu affirmativo, quibus poenis obnoxii sint?

Lit. Quaenam Missae de *Requiem* vetantur, quenam permittuntur a nova Rubrica, a die 17. usque ad 23. Decembris? Quare *Antiphonae maiores* vocari solent Antiphonae de *O*? Omitti ne possunt, quando et quomodo dicendae?









Inches 1 2 3 4 5 6 7 8

Centimetres 1 2 3 4 5 6 7 8 9 10 11 12 13 14 15 16 17 18 19

Colour Chart #13

DANES
-PICTA
.COM

Blue Cyan Green Yellow Red Magenta White 3/Color Black



LA

ANCISCO

M

VIENSI

IALIUM

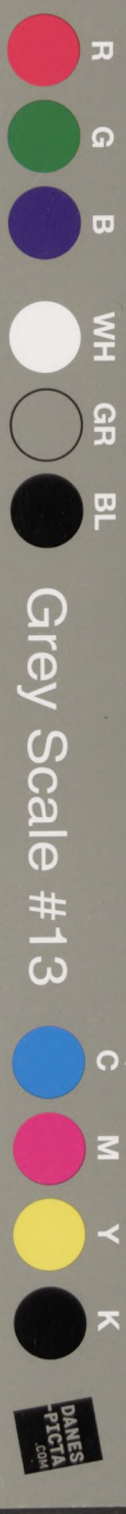
teka Jagie



100254577

Ć I PRAC.

A 1 2 3 4 5 6 M 8 9 10 11 12 13 14 15 B 17 18 19



Grey Scale #13

DANES
-PICTA
.COM