
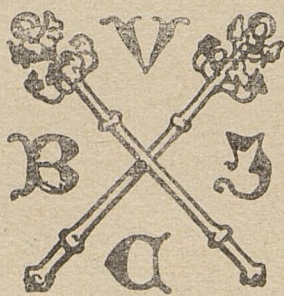
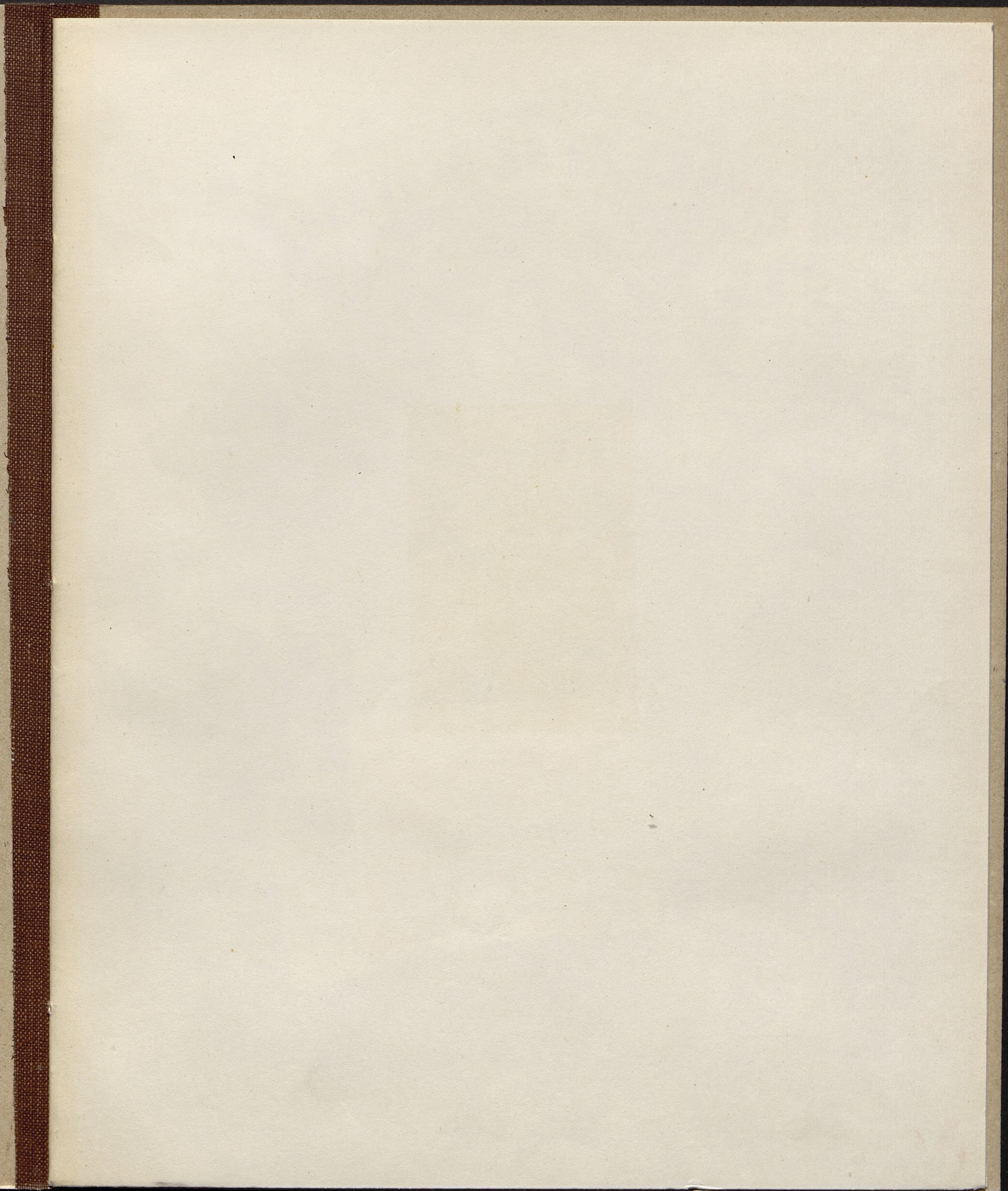
	10456 10
BIBLIOTHECA UNIV. IAGELL. CRACOVENSIS	musicalia 



10456 III

musicalia







10456

musicalia

10



OEUVRES DE FR. CHOPIN.



VAISES.

No. 1.	Op. 18.	Es dur	Kop.	45
» 2.	» 34.	No. 1. As dur	»	45
» 3.	» 34.	No. 2. A moll	»	37½
» 4.	» 34.	No. 3. F dur	»	37½
» 5.	» 42.	As dur	»	45
» 6.	» 64.	Des dur. Cis moll. As dur	»	75
» 7.	» 64.	No. 1.	»	30
» 8.	» 64.	No. 2.	»	30
» 9.	» 64.	No. 3.	»	30
» 10.	» 69.	As dur. H moll	»	45
» 11.	» 70.	Ges dur. As dur. Des dur.	»	45

PROPRIÉTÉ DES EDITEURS.

VARSOVIE
chez GEBETHNER & WOLFF.



10456

III Mus.
10



Deux Valses.

Lento. $\text{♩} = 138.$

Fr. Chopin, Op. 69.

1.

p con espressione

f

riten. *a tempo*

f

riten.

Handwritten annotations include: *3*, *4*, *1*, *2*, *3*, *4*, *5*, *12*, *3*, *4*, *3*, *1*, *2*, *3*, *4*, *5*, *13*, *12*, *3*, *4*, *3*.

Rehearsal marks: *Red. * Red. * Red. * Red. * Red. **

4
dibl. Jag.

con anima

Ped. * Ped. * Ped. * Ped. * Ped. *

Ped. * Ped. * Ped. * Ped. * Ped. *

a tempo

riten. con forza

Ped. * Ped. * Ped. * Ped. * Ped. *

f *p*

Ped. * Ped. * Ped. * Ped. * Ped. *

riten.

1. 2. 3.

Ped. * Ped. * Ped. * Ped. * Ped. *

Handwritten numbers: *1 2 3 4 5* (fingerings), *3 4 3*, *2 4 3*, *2 4 5*, *3 4 3*, *4*.

First system of a piano score in G-flat major, 3/4 time. The right hand features a melodic line with slurs and accents, marked *ten.* (tension) and *dolce*. The left hand provides a simple accompaniment. The system concludes with a double bar line and a fermata. Pedal markings are indicated as *Ped. ** at the start of each measure.

Second system of the piano score, continuing the melodic and accompanimental lines from the first system. It includes *ten.* markings and a *Ped. ** marking.

Third system of the piano score. The right hand begins with *ten.* and *p* (piano) markings. The system includes dynamic markings *poco*, *a* (ad libitum), and *poco*. Pedal markings are *Ped. **.

Fourth system of the piano score. The right hand features a melodic line with slurs and accents, marked *ten.*. The left hand has a more active accompaniment. Dynamic markings include *cresc.* (crescendo) and *f* (forte). The system concludes with a double bar line and a fermata. Pedal markings are *Ped. **.

Fifth system of the piano score, continuing the melodic and accompanimental lines. It includes *ten.* markings and a *Ped. ** marking.

poco a poco *cresc.* **f**

ten. *ten.* *ten.*

Ped. * Ped. * Ped. * Ped. * Ped. *

ten.

Ped. * Ped. * Ped. * Ped. *

f **p**

Ped. * Ped. * Ped. * Ped. * Ped. *

riten.

Ped. * Ped. * Ped. * Ped. *

Moderato. ♩ = 152

2.

p

rit. *a tempo*

f *dim.*

rit.

Handwritten annotations: *4*, *4*, *4 3 2*, *con anima*, *4*, *2*

Ad. * *Ad.* * *Ad.* * *Ad.* * *Ad.* *

Handwritten annotations: *2 4 1*, *1 2 3 4 5*, *4*

rit. *a tempo*

Ad. * *Ad.* * *Ad.* * *Ad.* * *Ad.* *

Handwritten annotations: *2*, *1*, *2 1 4 2 3 1 2 3*, *2*, *3*

f *f*

Ad. * *Ad.* * *Ad.* * *Ad.* * *Ad.* *

Handwritten annotations: *2 1 4 2 4*, *1*, *4*, *3 2 1 2*, *5*, *4*, *1 4*, *4*

f *rit.*

Ad. * *Ad.* * *Ad.* * *Ad.* * *Ad.* * *Ad.* * *Ad.* *

Handwritten annotations: *2*, *5*, *1*, *2 5 4*, *1 4*, *4 3*

rit. *a tempo*

Ad. * *Ad.* * *Ad.* * *Ad.* * *Ad.* *

Handwritten number 2 above the first measure.

Ped. * Ped. * Ped. * Ped. * Ped. * Ped. * Ped. *

Handwritten numbers 2 4 1 2 3 4 5 above the first measure.

rit. *a tempo*

Ped. * Ped. * Ped. * Ped. * Ped. * Ped. *

Handwritten numbers 1 4 2 and 3 2 1 4 4 above the first and second measures.

f *sf*

Ped. * Ped. * Ped. * Ped. * Ped. * Ped. *

Handwritten numbers 4, 5 4, 1 4, 2 1 4 3 2 1, 2, 5 above the first measure.

sf *rit.*

Ped. * Ped. * Ped. * Ped. * Ped. * Ped. *

Handwritten numbers 2 5 2 5 and 1 5 above the first and second measures.

riten.

Ped. * Ped. * Ped. * Ped. *

The image shows a page of handwritten musical notation for piano, consisting of six systems of staves. Each system includes a treble and bass clef staff. The music is written in a key with three sharps (F#, C#, G#) and a 3/4 time signature. The notation includes various musical symbols such as notes, rests, slurs, and dynamic markings. Handwritten numbers above the notes indicate fingerings. The piece begins with the instruction *mf dolce*. The first system includes fingerings like 3, 1, 4, 2, 4, 1, 4, 1, 5, 4, 5, 4, 1, 2, 3, 2, 5, 4, 5. The second system includes fingerings like 4, 1, 2, 4, 3, 1, 4, 2, 4, 1, 4, 5, 4, 5, 4, 1, 2, 3. The third system includes fingerings like 5, 4, 5, 4, 1, 5, 4, 2, 5, 4, 2, 1, 2. The fourth system includes fingerings like 4, 2, 2, 1, 2, 2, 1, 2, 2, 1, 2, 2, 1, 2. The fifth system includes fingerings like 1, 5, 4, 5, 4, 1, 4, 3, 2, 5, 4, 1, 2. The sixth system includes fingerings like 4, 1, 2, 3, 4, 1, 2, 3, 4, 1, 2, 3, 4, 1, 2, 3, 4. The piece concludes with a *f* dynamic marking. The page is numbered 10 in the top left corner.

rit.

5

Tea. * Tea. * Tea. * Tea. * Tea. * Tea. * Tea. *

con anima

4 1 4

Tea. * Tea. * Tea. * Tea. * Tea. *

rit.

a tempo

Tea. * Tea. * Tea. * Tea. * Tea. * Tea. *

f

4 2

Tea. * Tea. * Tea. * Tea. * Tea. * Tea. * Tea. *

f

rit.

4 5 4 3 2 1 4

Tea. * Tea. * Tea. * Tea. * Tea. * Tea. * Tea. *

calando

Tea. * Tea. * Tea. * Tea. *



