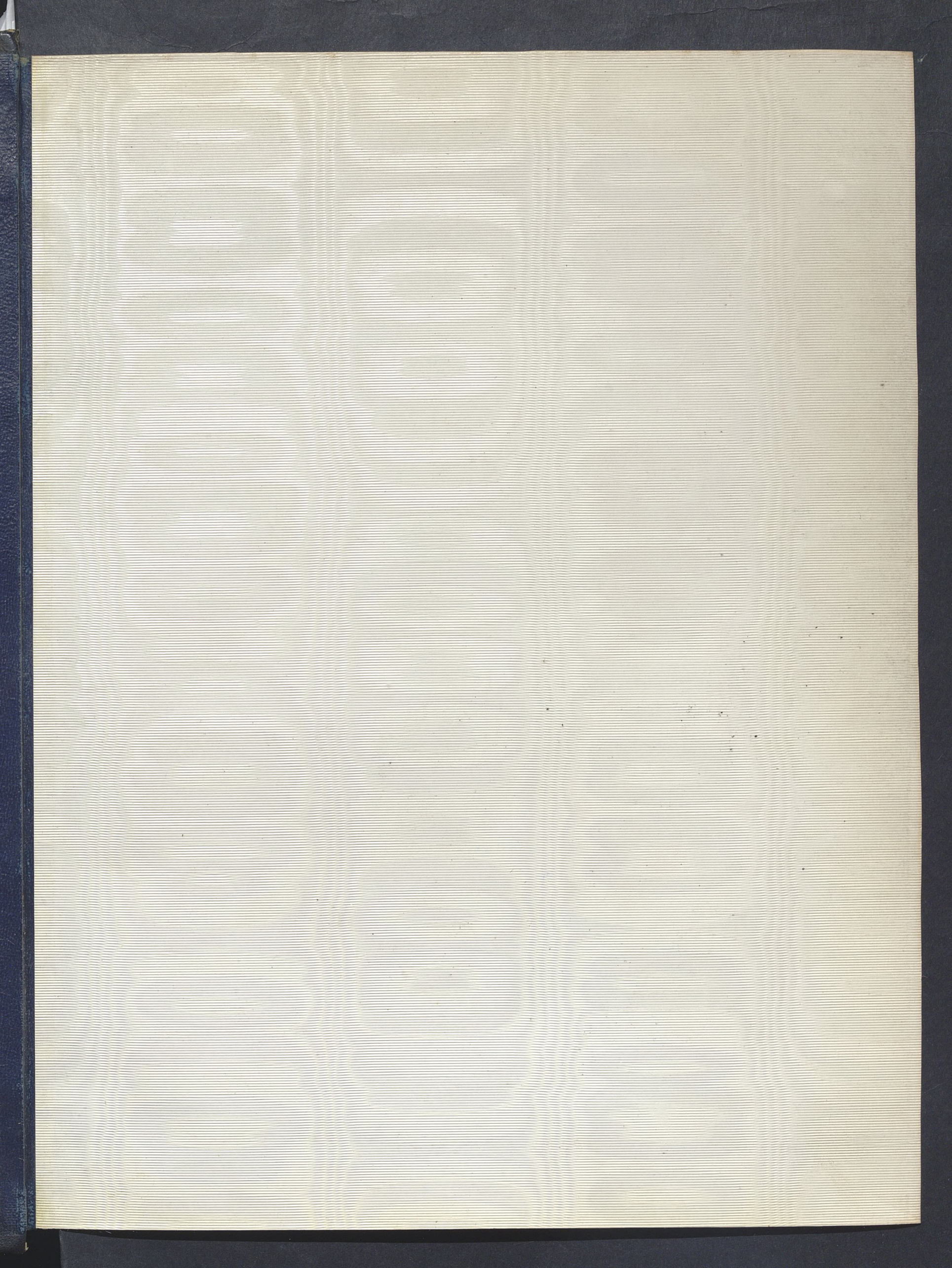


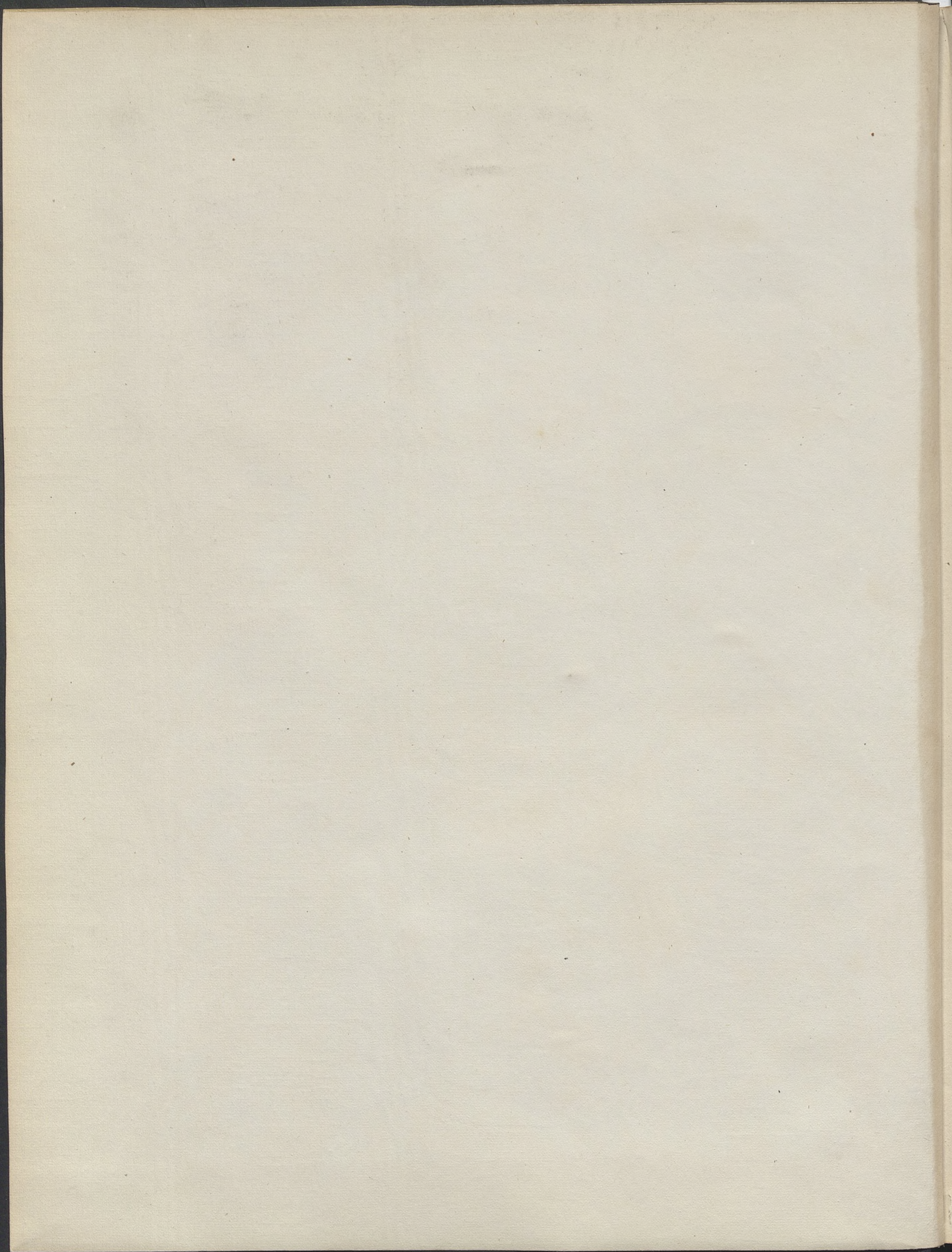
S P

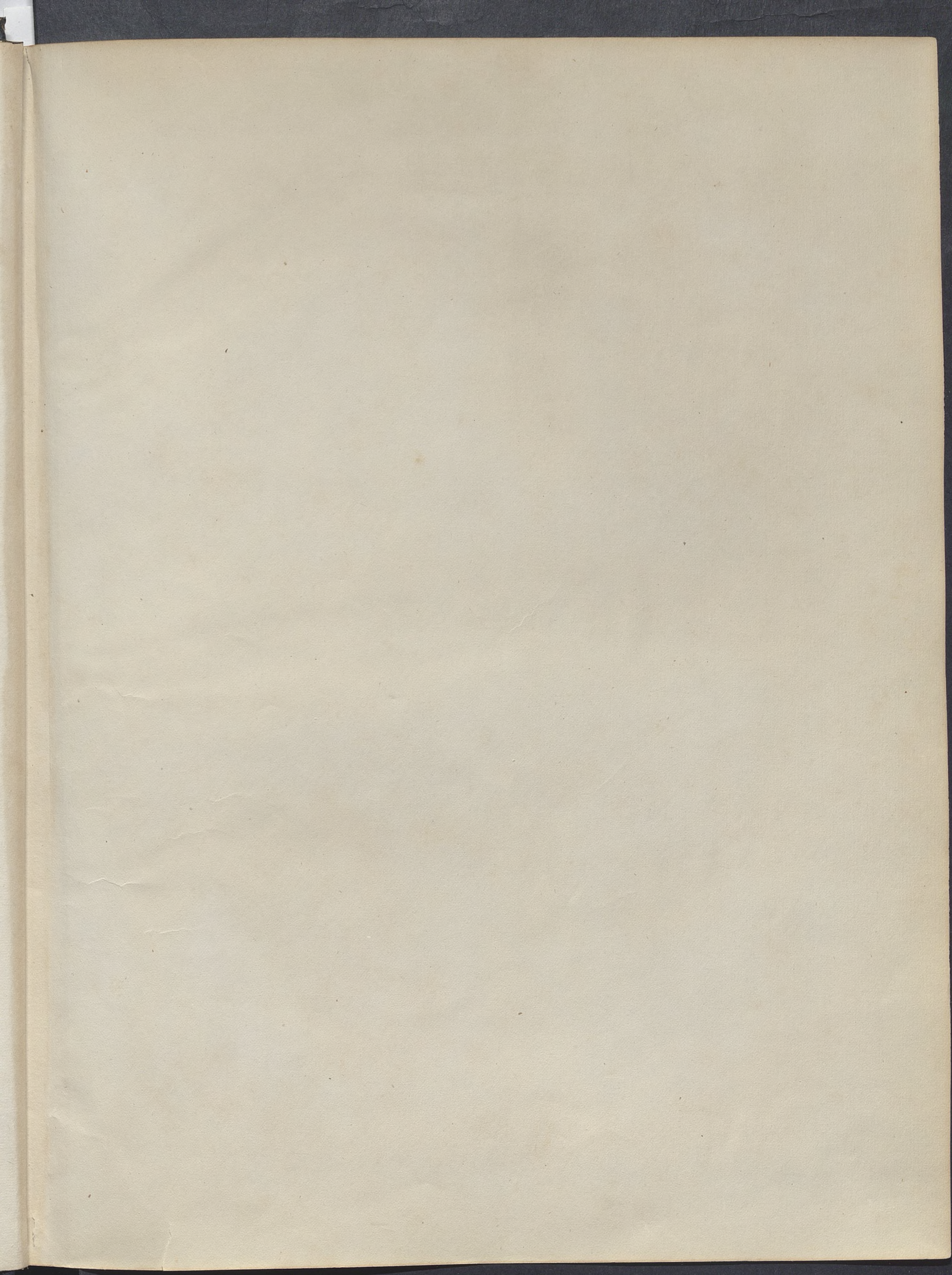
Biblioteka Jagiellońska



1002185402







Mux. 32434 III

Alfredowi Römerowi.

SWATY,

PIEŚŃ

STANI SŁAWA MONTUSZKI.

Cena 60 Kop.
20 Ngr.

WILNO

nakład Józefa Zawadzkiego.



Bibl. Jagiell.
Ms. 2006 D 56/137
(243)



SWATY.

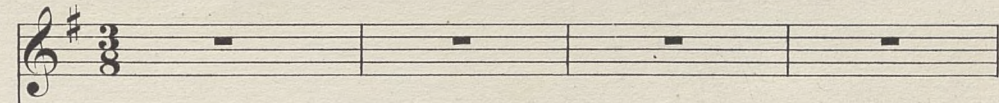
PIEŚŃ

STANISŁAWA MONIUSZKI.

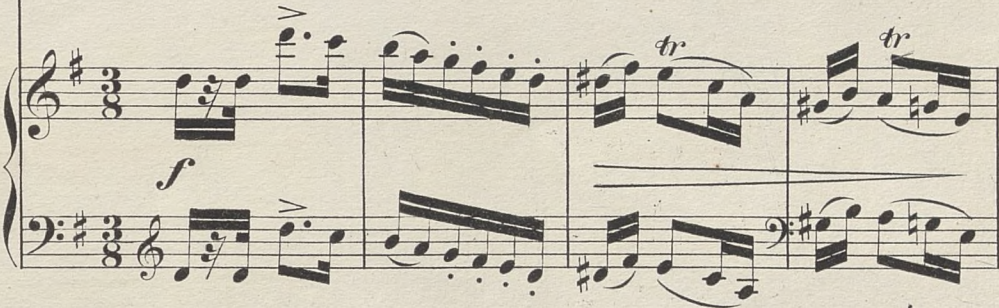
Allegro.

Słowa : Edmunda Wasilewskiego.

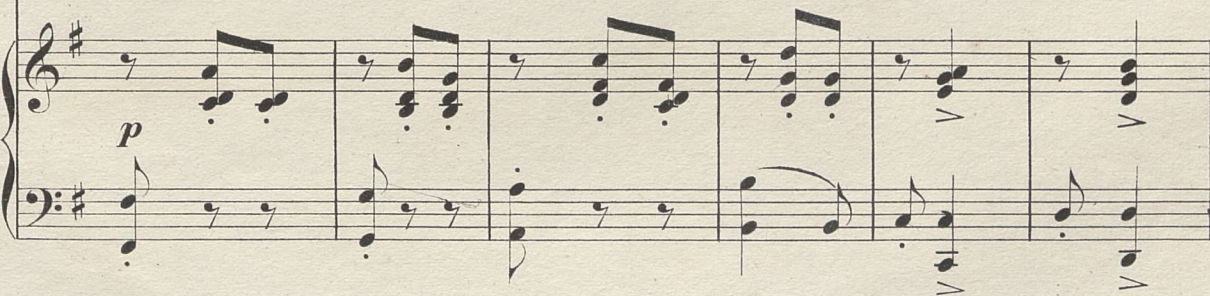
Głos.



Piano.



p W listecz-ki ma - li - na, za krewnych dziewczy - na *p* ri - te - nu - to
darem-nie! da - remnie



a tempo

chowa się przed swa - - chem; ma-li - ne zer - wie - - my,

f

Ped. *

Un poco più lento.

dziewcę na - mó - - wie - my,

dolcissimo.

pp ri - - te - nu - - to.

Ped. *

Tempo I!

chora - giew - kę za - - tkniem nad ro - dzi - ca da - - chem,*)

a tempo

cre - - scen - - do.

tr

*) Nad domem, w którym ma się odbywać wesele, Krakowiacy zatykają chorągiewkę.

cho-ra - giew - - kę za - tkniem nad ro - dzi - ca da - - chem.

f *mf*

This system contains the vocal line and the first system of piano accompaniment. The vocal line is in a treble clef with a key signature of one sharp (F#). The piano accompaniment is in a grand staff (treble and bass clefs). Dynamics include *f* and *mf*.

ff con fuoco

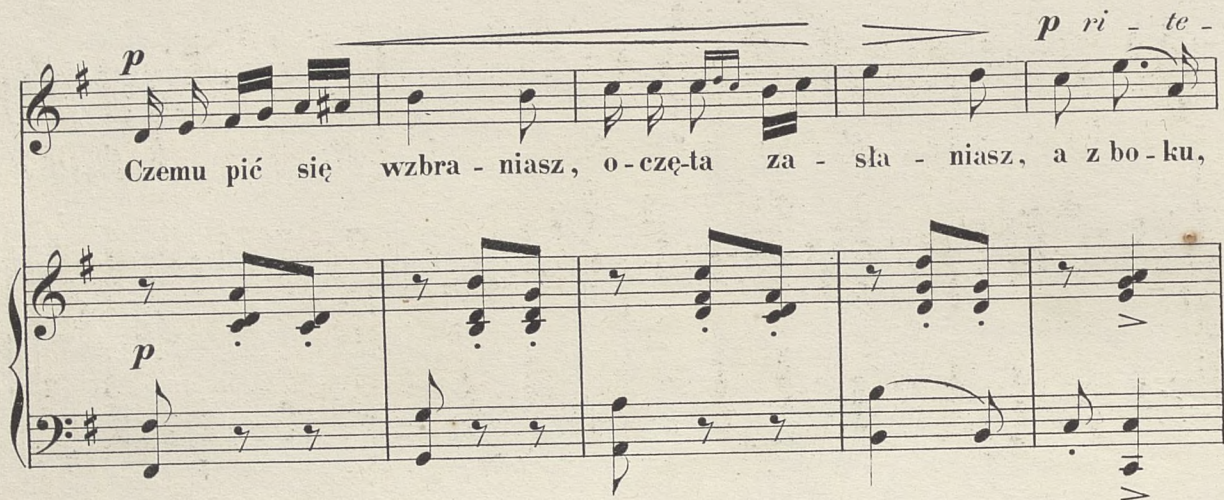
Ped. * Ped. * Ped. *

This system contains the second system of piano accompaniment. The vocal line is empty. Dynamics include *ff con fuoco*. Pedal points are marked with 'Ped.' and asterisks.

Ped. * Ped. *

This system contains the third system of piano accompaniment. The vocal line is empty. Pedal points are marked with 'Ped.' and asterisks.

p Czemu pić się wzbra - niasz, o - cze - ta za - sła - niasz, a z bo - ku, *p* ri - te -



mu - to a tempo z u - ko - sa, po - gładasz na Sta - cha; lepicj się u - śmie - chaj, *f*



Leo. *

Un poco più lento. Kielisz - ka nie nie - chaj ! *dolcissimo.* *Tempo I!* Kiedy wo - la *a tempo*

pp ri - te - ni - to. cre - -



Leo. *

Bo - - ska na - pij się do Swa - cha! Kiedy wo - - la Bo - ska,

scen - - - - do *f* *mf*



napij się do Swa - cha.

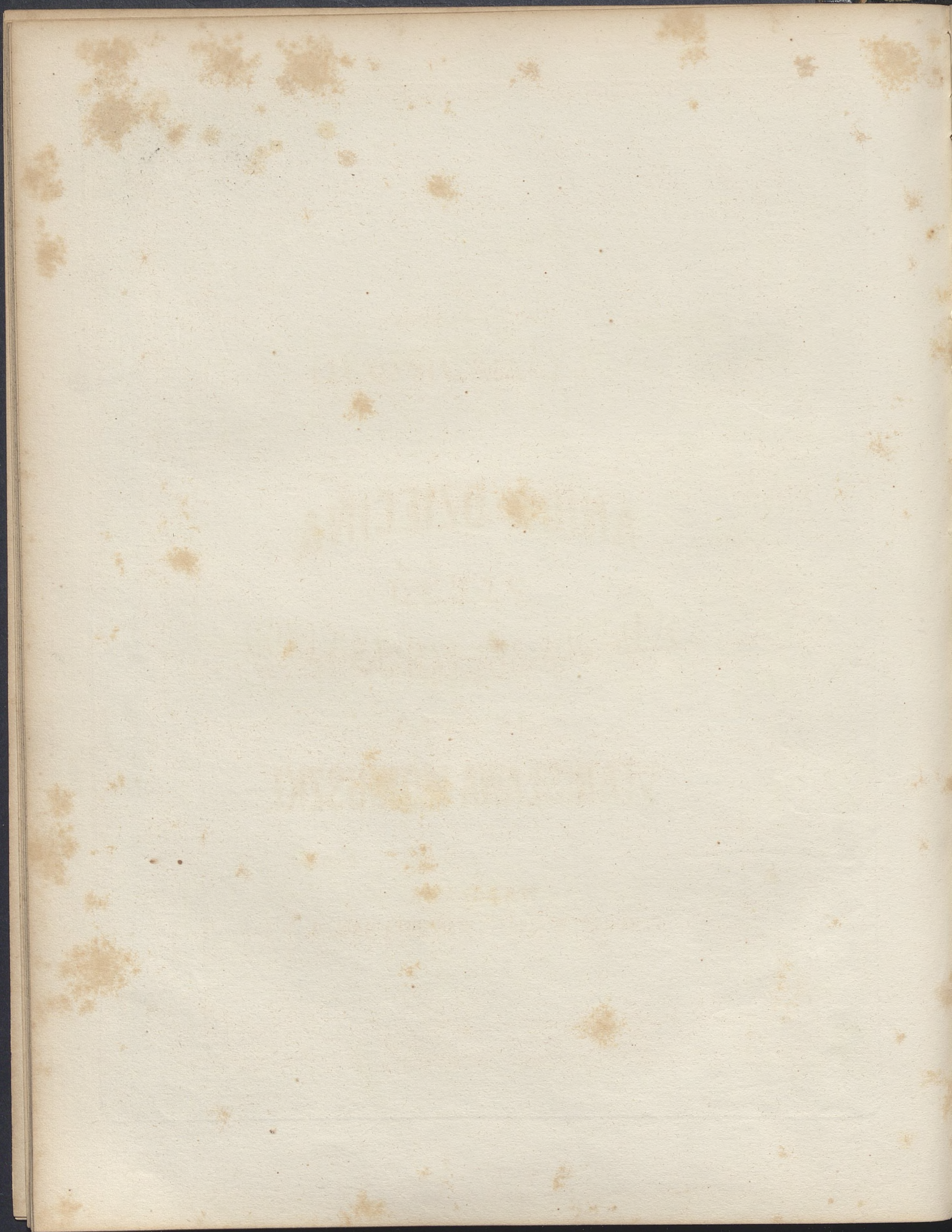
ff con fuoco.

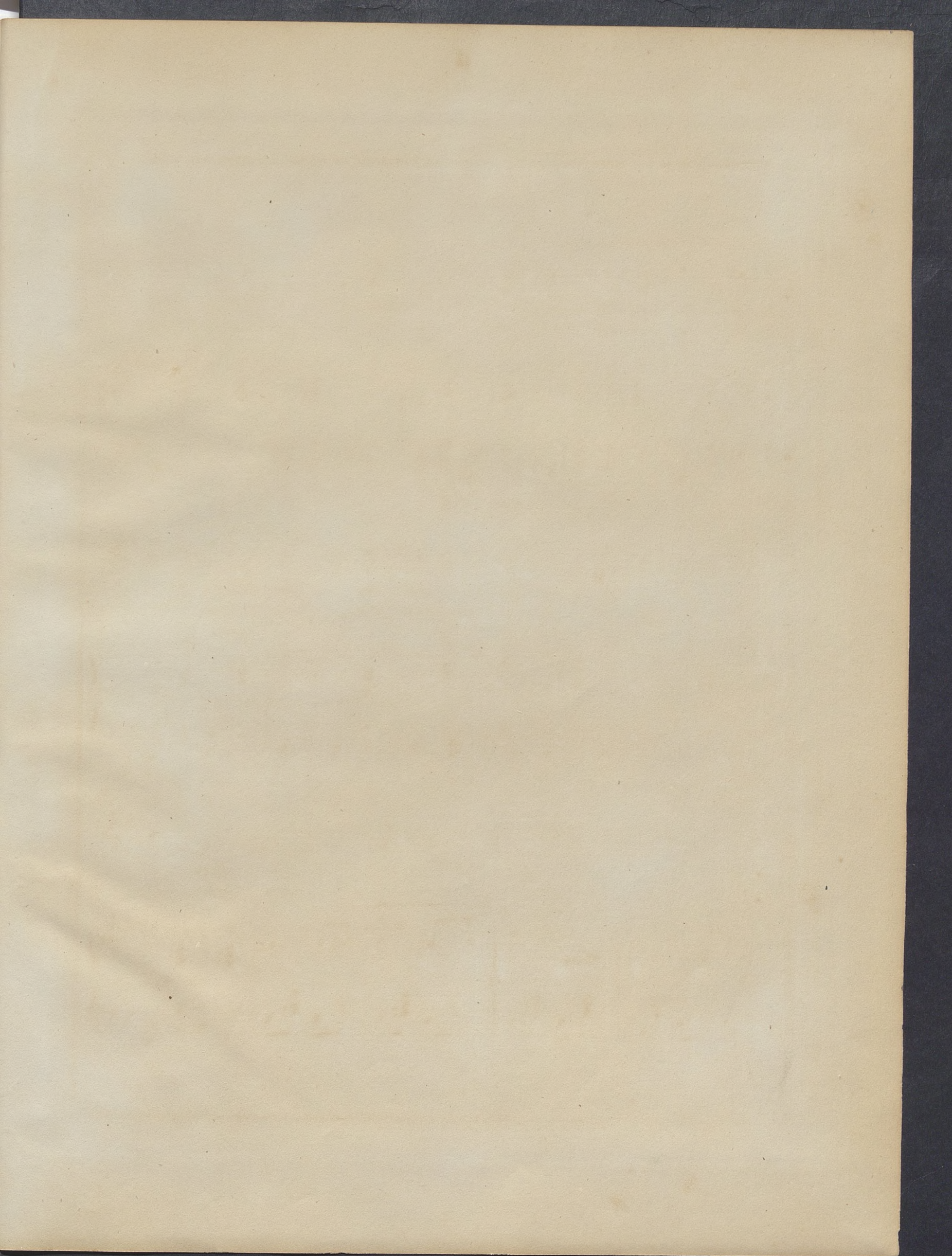
Ped. * Ped. *

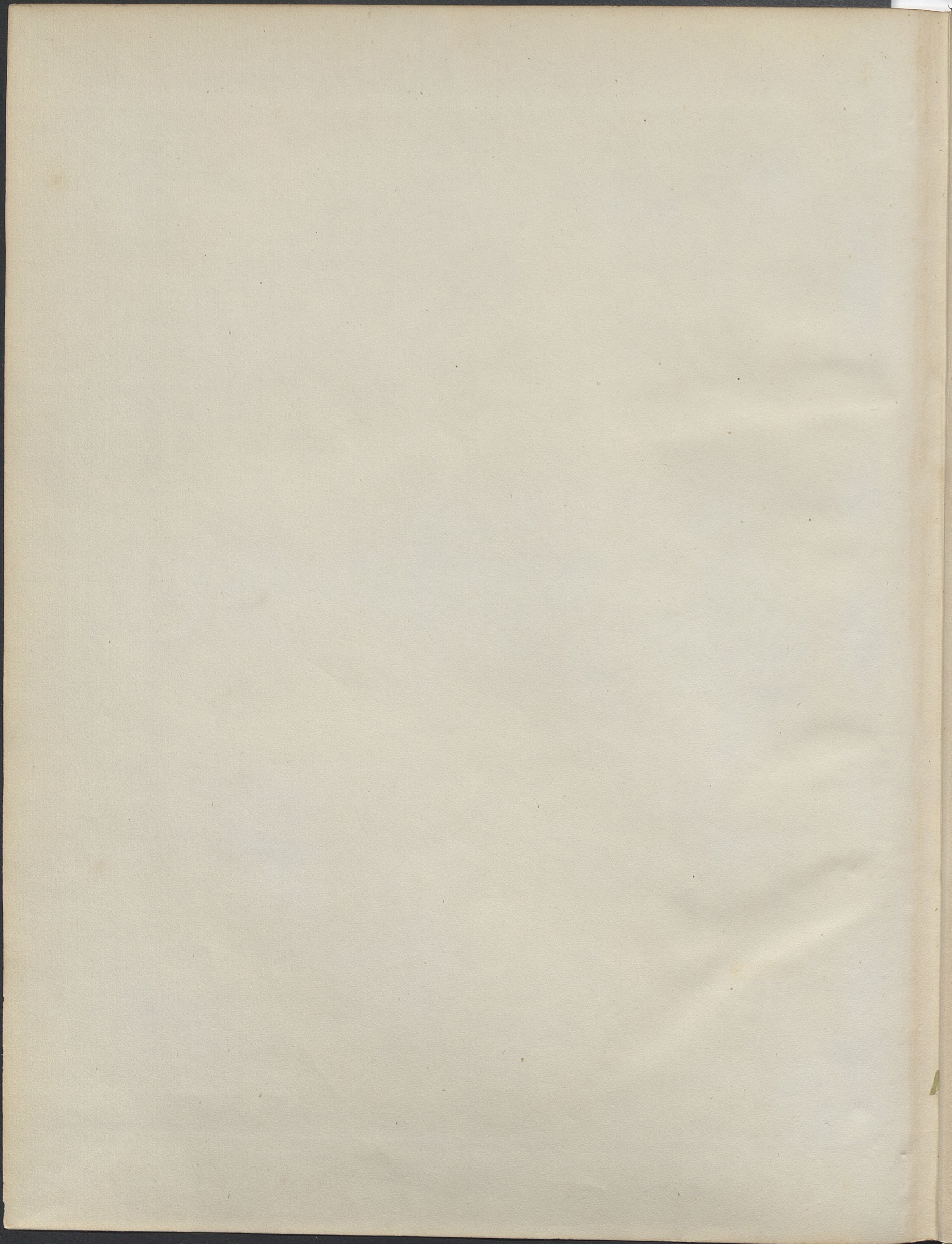


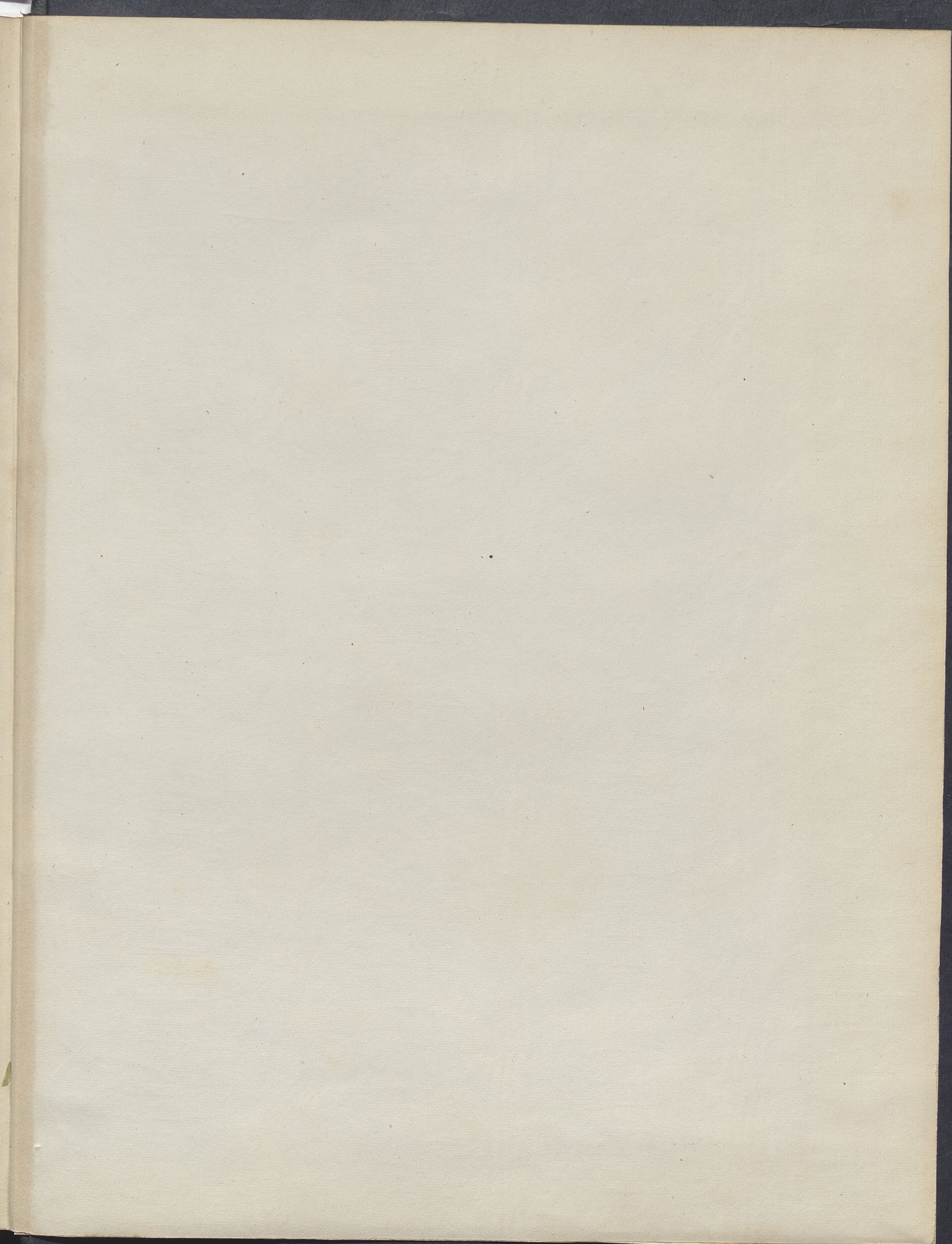
Ped. * Ped.

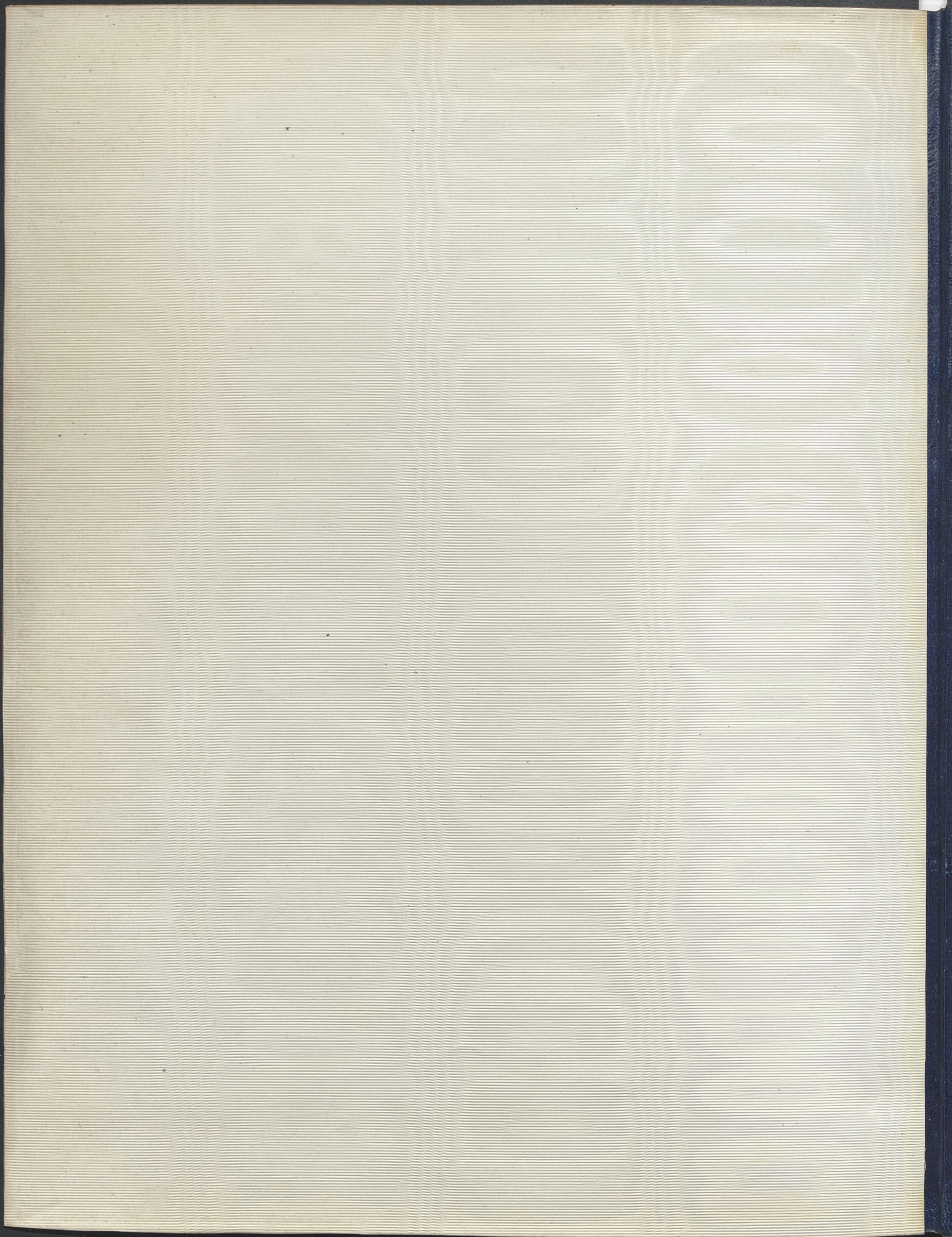


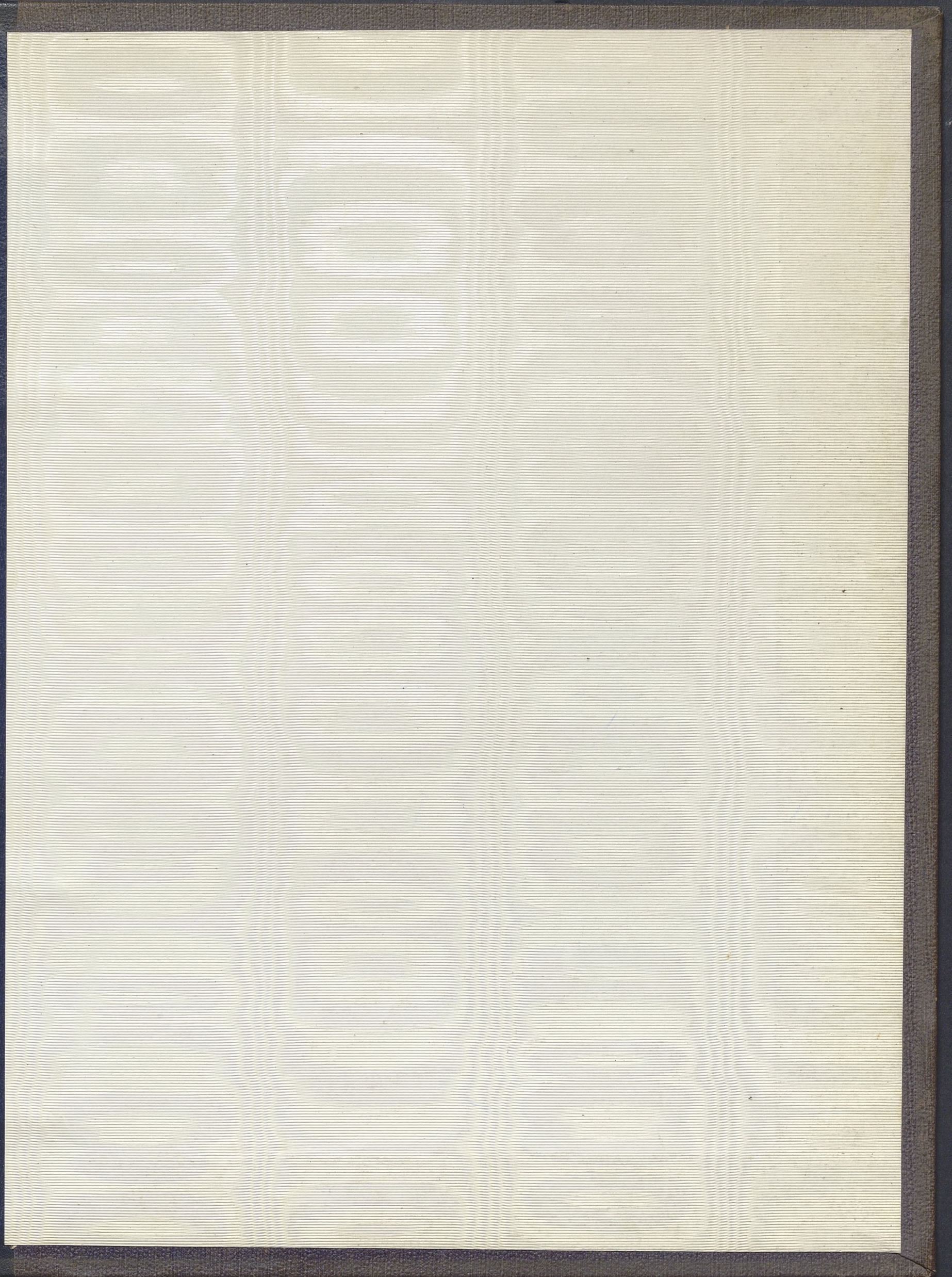












**Książka
po dezynfekcji**