

3221

5

Signa et causa.

(4)

N. Triv.

3221.

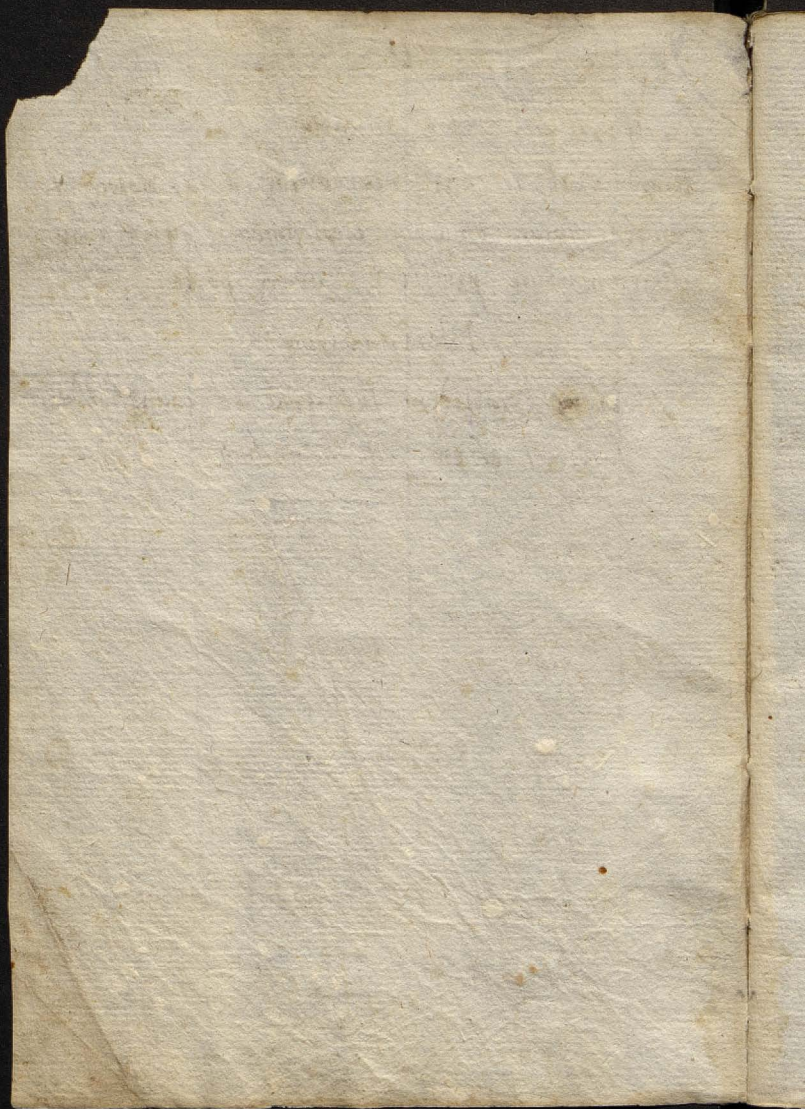
22.11
10

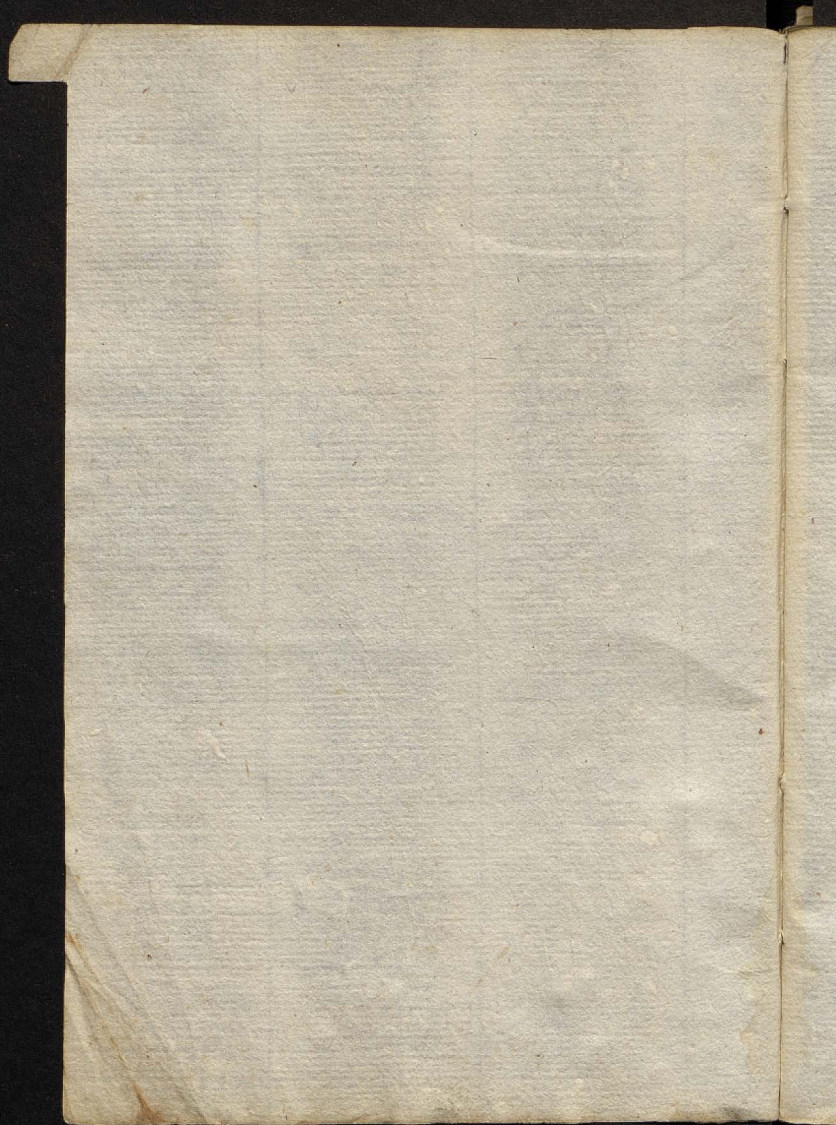
Hippocrates libro de arte.

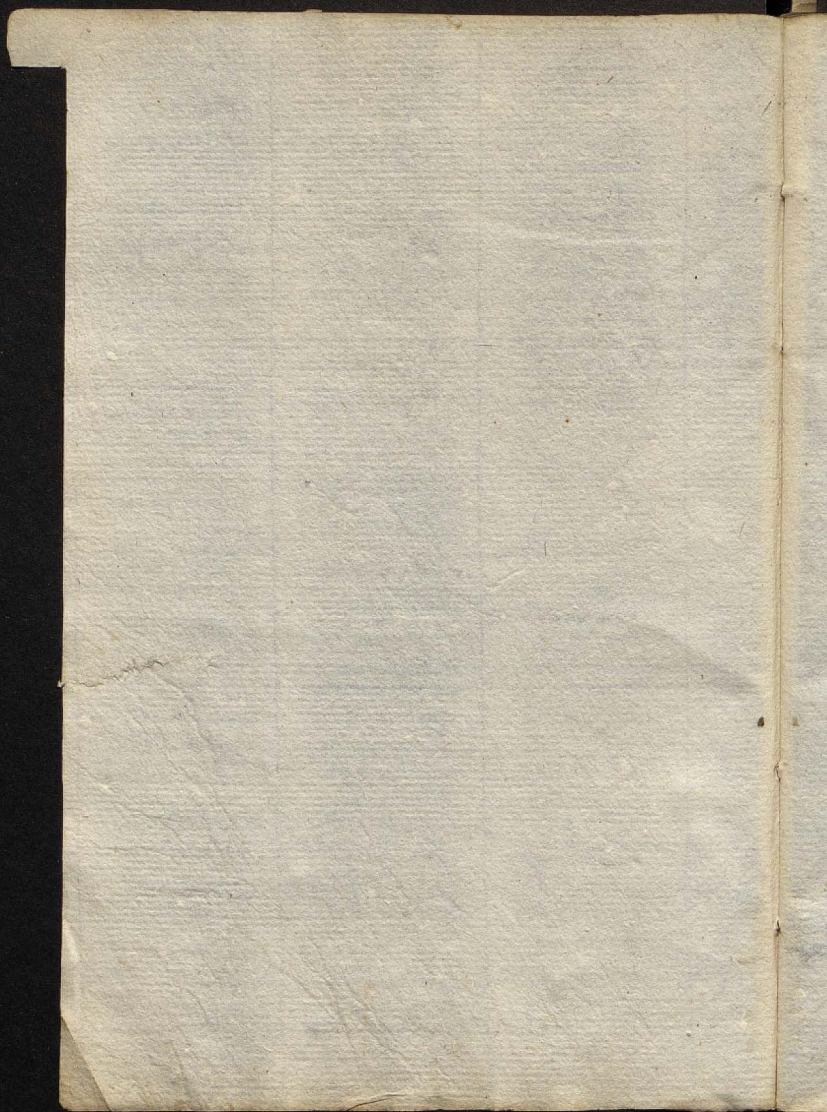
Eiusdem est scientia morborum causas nosse, et
morbos ipsos omnibus medicamentis, quae auge-
sere morbum prohibent, curare posse.

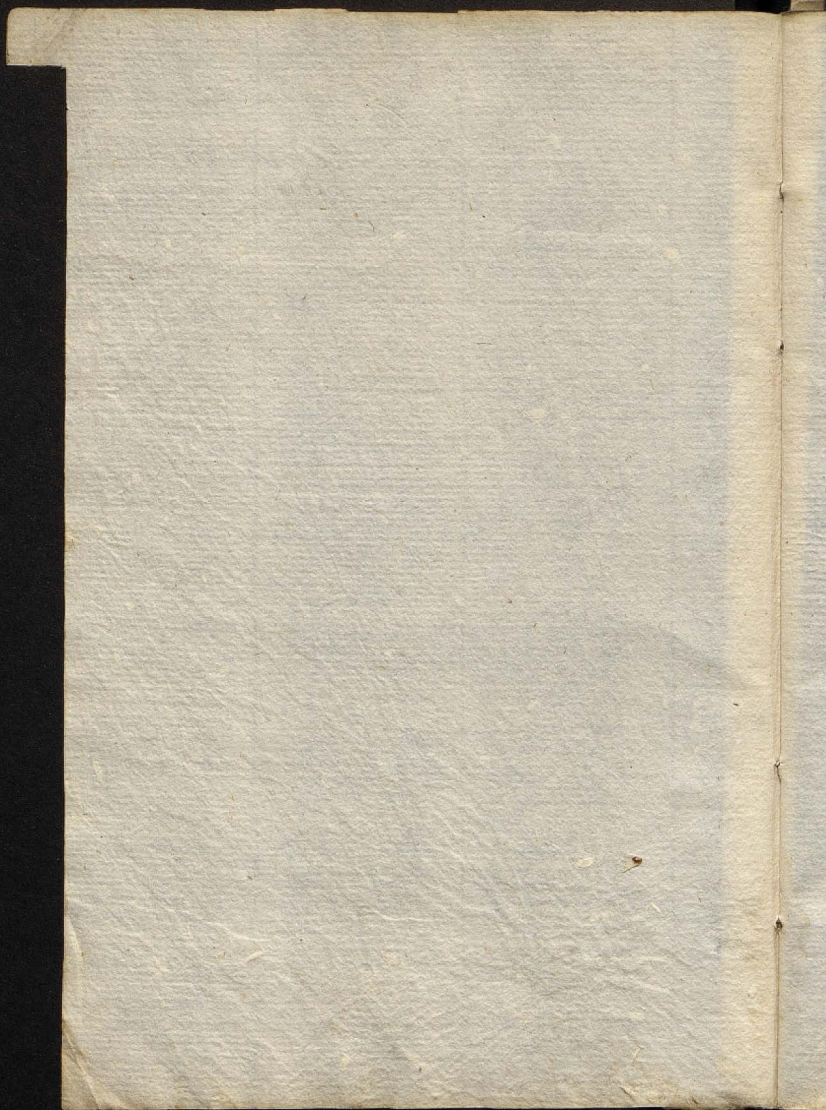
Idem, ibidem

Medicus siquidem suffecerit ad cognoscendum,
Suffecerit etiam ad sanandum.



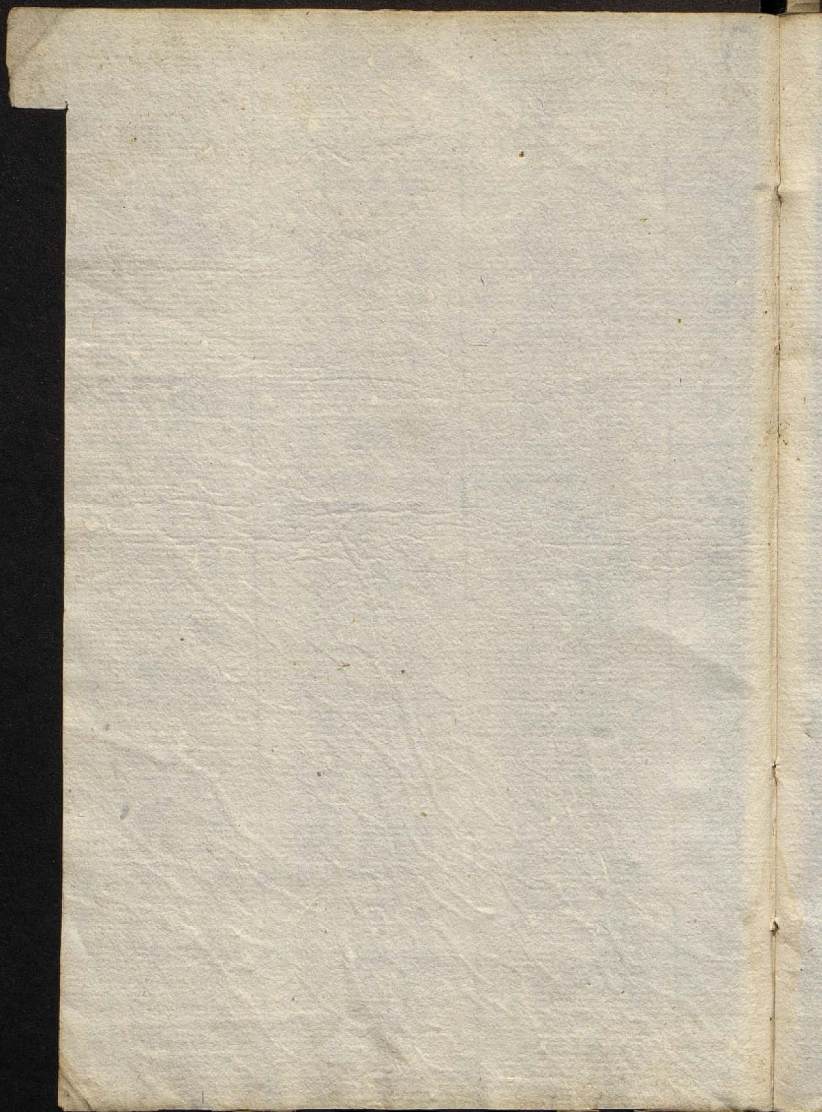


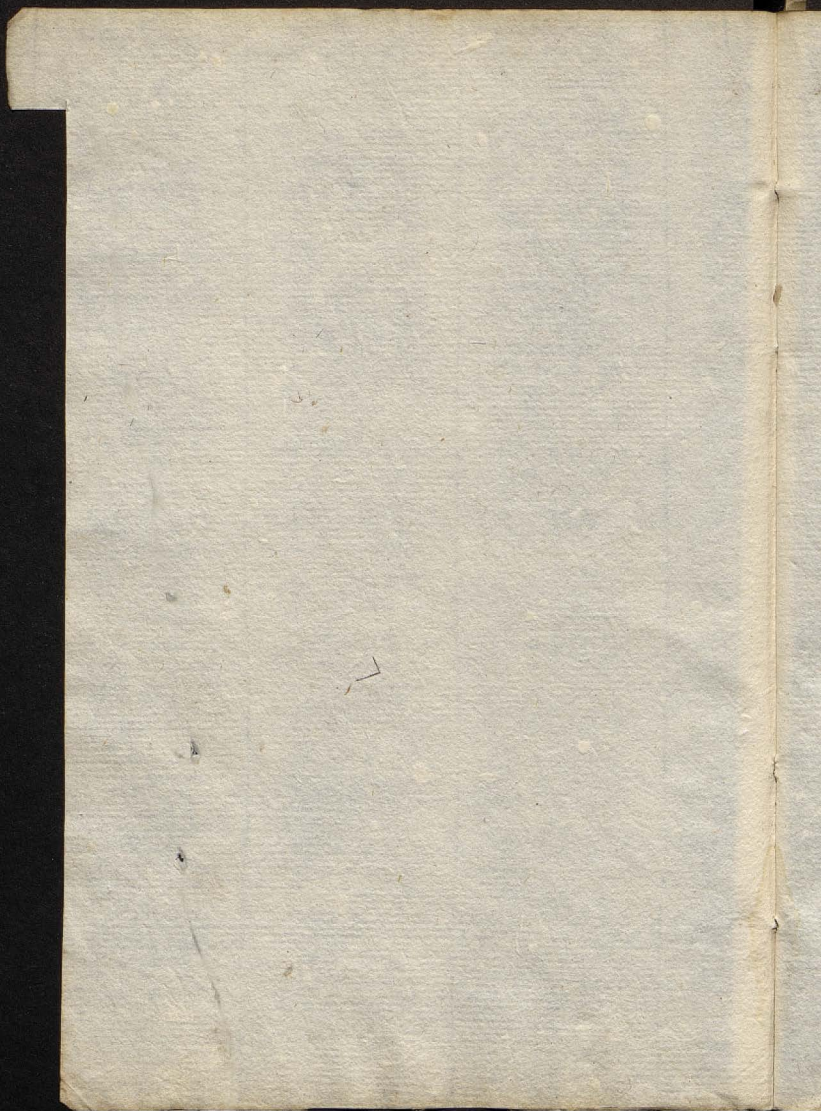


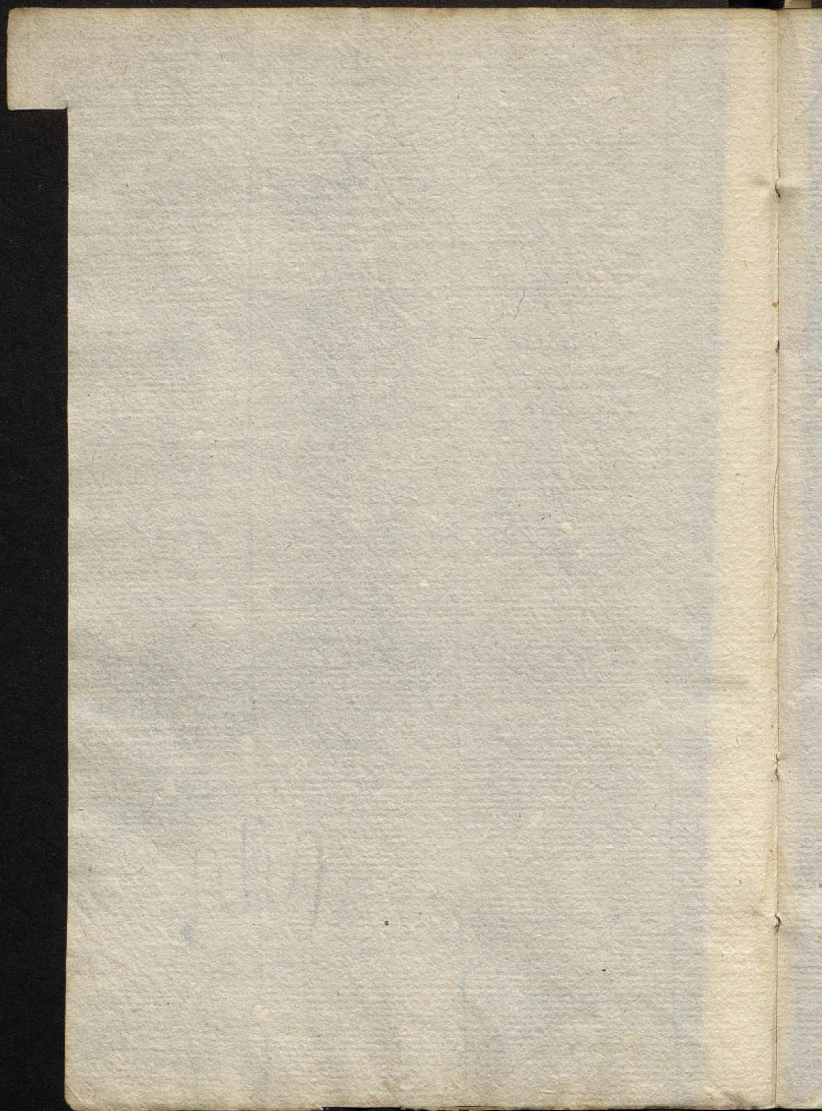


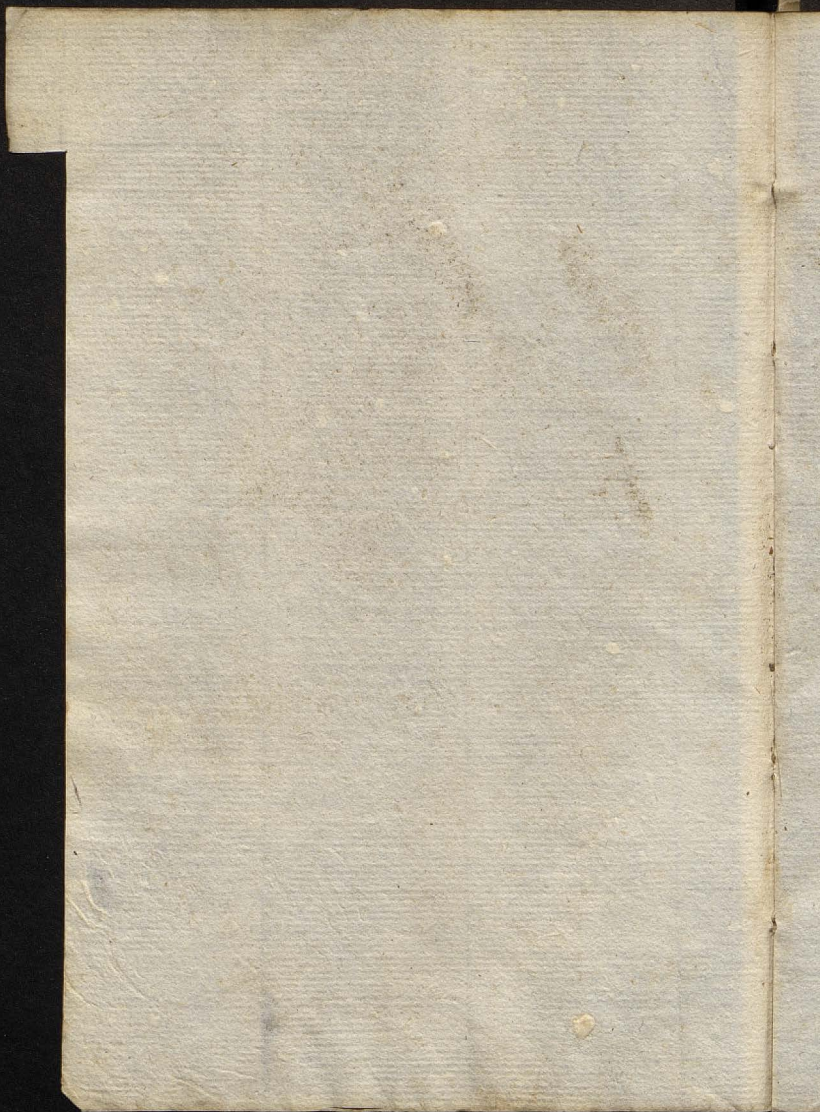
5

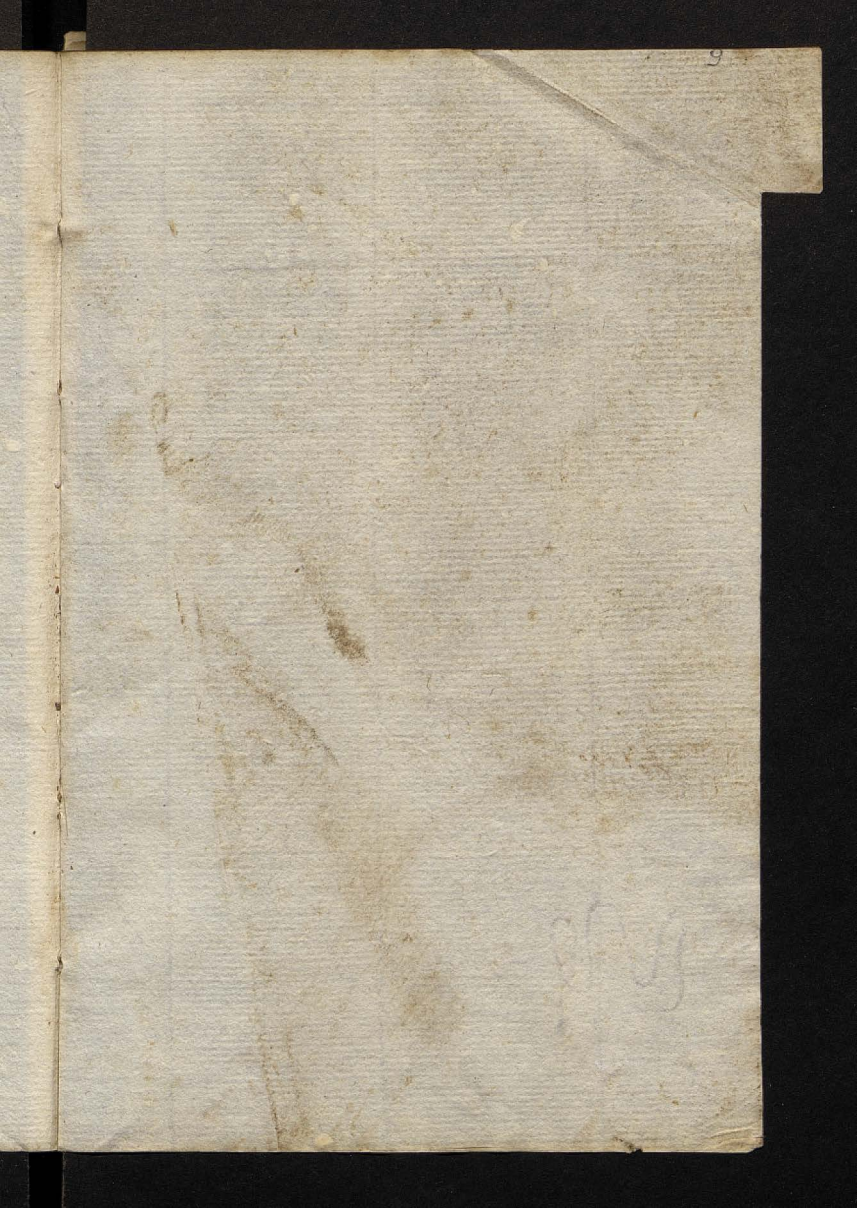
A

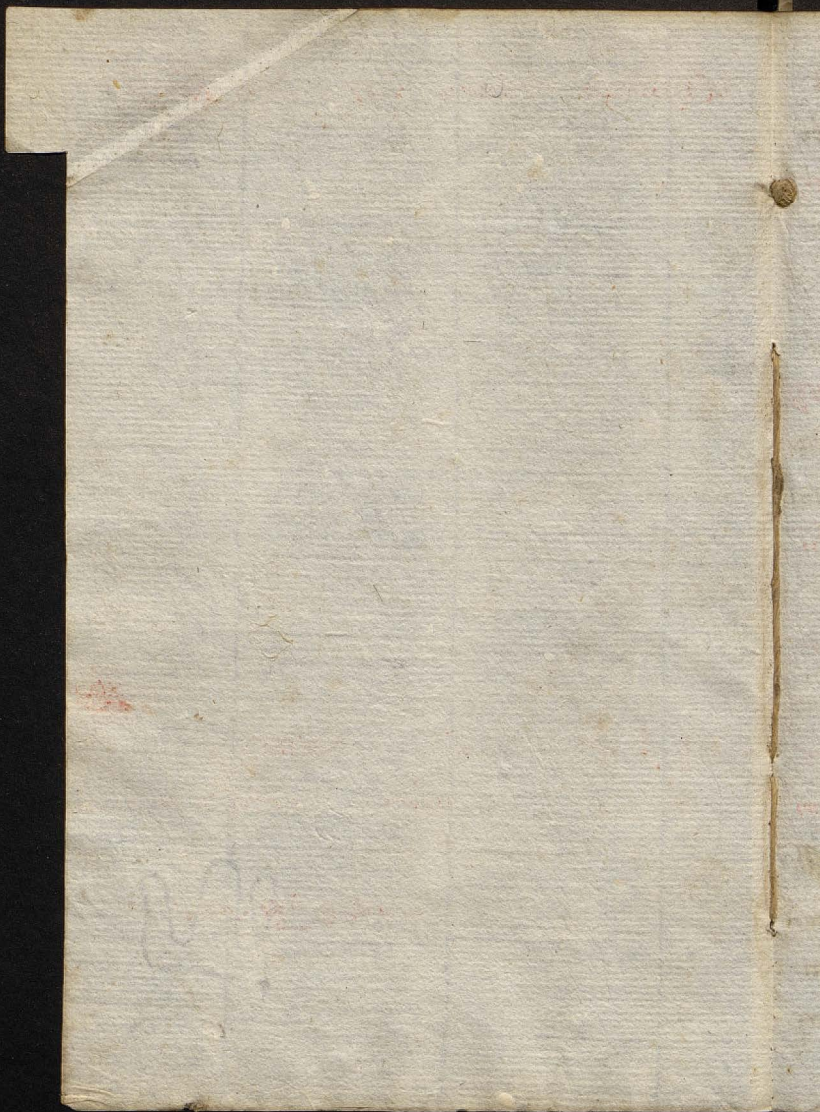












Cephalalgia et Cephalda capitis peculiaris dolor est:

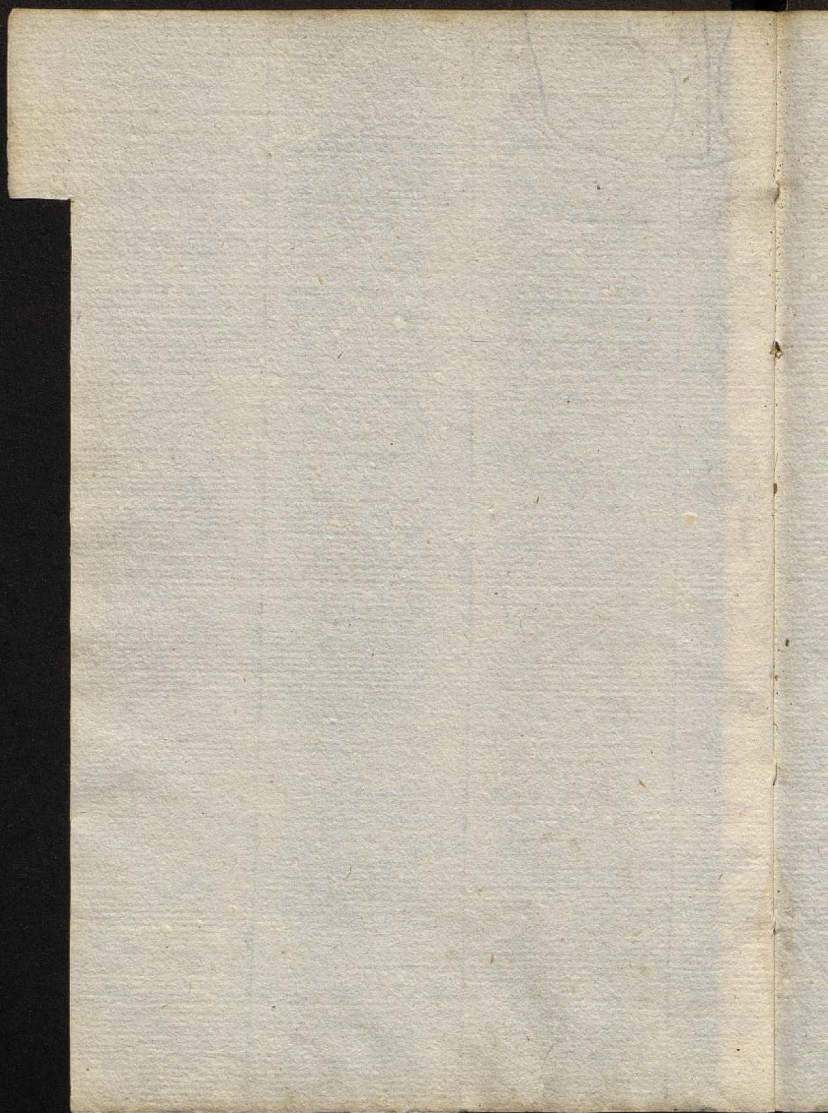
In cephalda quidem diuturnus, vehemens, et degre
 cedens: non continuus, sed morbi combales instar
 per accessiones et intervalla repetens, exacerbari
 q3 solitus, cum imbecillitate capitis: ob quam
 ocius ac frequentius accessio repetit. In Ce
 phalalgia vero nec diuturnus nec vehemens,
 sed qualis a Sole, labore, crapula solet exci
 tari: quare mitior, nec ut in Cephalda capitis
 imbecillitati conjunctus - ideoq; nec irritatu adeo
 facilis. Omnis vero capitis dolor in eius mem
 branis est: qui vel externus, vel internus. Cum
 externus est afficitur pericranii membrana, *dolor*
q3 sentitur in radicibus capillorum, qui pressu reddi
tur acutior. Sin internus, nimirum intra Calviam
 Cerebri meningis intemperiem, aut solutionem
 continui contraxere. *Doloris differentias*

Dolor est motus asper a sensibus alienus ex M.
 Tullio. Vel potius tristis ac molestus rei sensus: ut
 blanda voluptas ex Galeno. Qui fit quum temperies

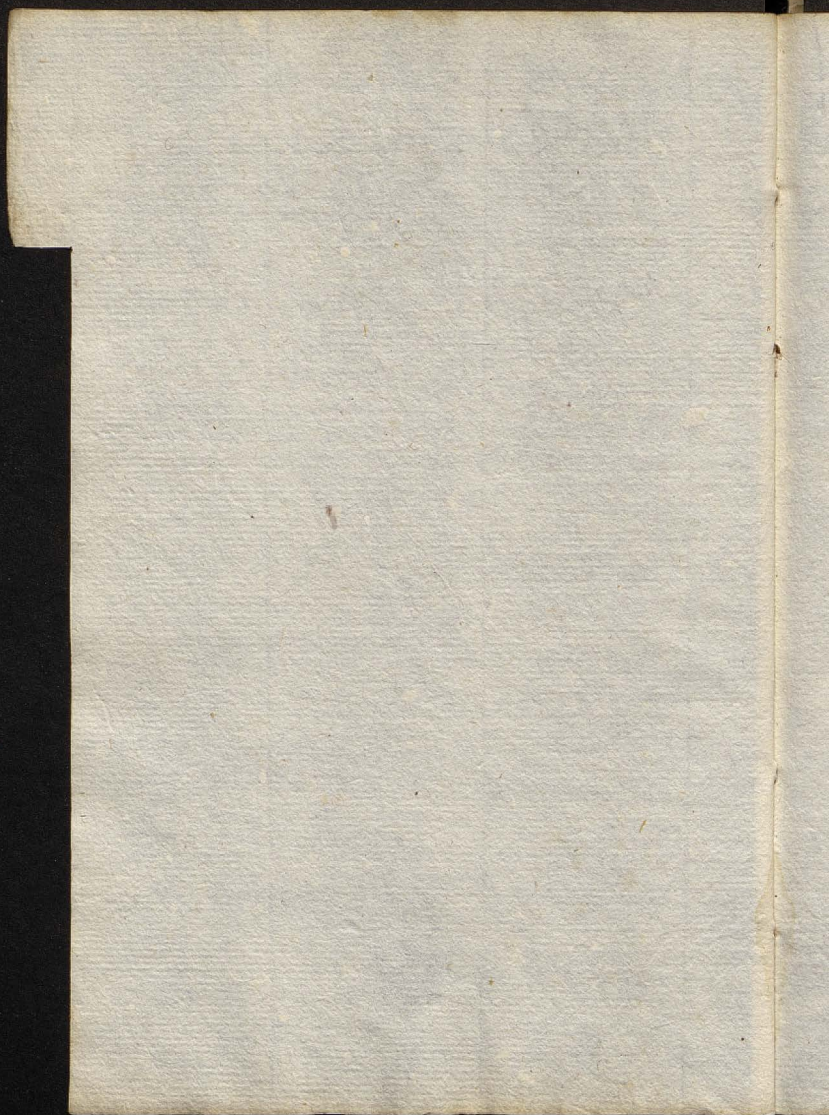
repente mutatur, aut continuitas soluitur. Consistit
autem dolor omnis in sensu, nec nisi in partibus sen-
sibilibus potest contingere. Qui si *pungens, acer,*
ac lancinans, bilem: si *tensius,* spiritum, seu
flatum: si *grauans,* humoris copiam indicat.
Gravans autem si pariter *obtusus,* pituita:
si *blandus,* sanguinis: si *pungens pulsansq;*
bilis exuperantis, aut inflammationis; interdum
et pituita vitrea signum habendum est: pitui-
ta vitrea quidem, si *instar acus, aut cerebri*
perforantis, aut impacti pali pars diuelli
videatur ut in colico dolore. Pulsatilis dolor
arteriarum est qui a partium vicinarum inflam-
matione comprimuntur: *punctorius et tensius*
membrantarum. ὀστέοπυος, seu *dolor ossium*
in his membranis est qui ossibus adiacent. Al-
ius est dolor qui *λάτρεπος,* seu *laxus et mol-*
lis ab Hippocrate nuncupatur, per quem is in-
telligitur, qui sit pblegmones ac tensionis expertus.

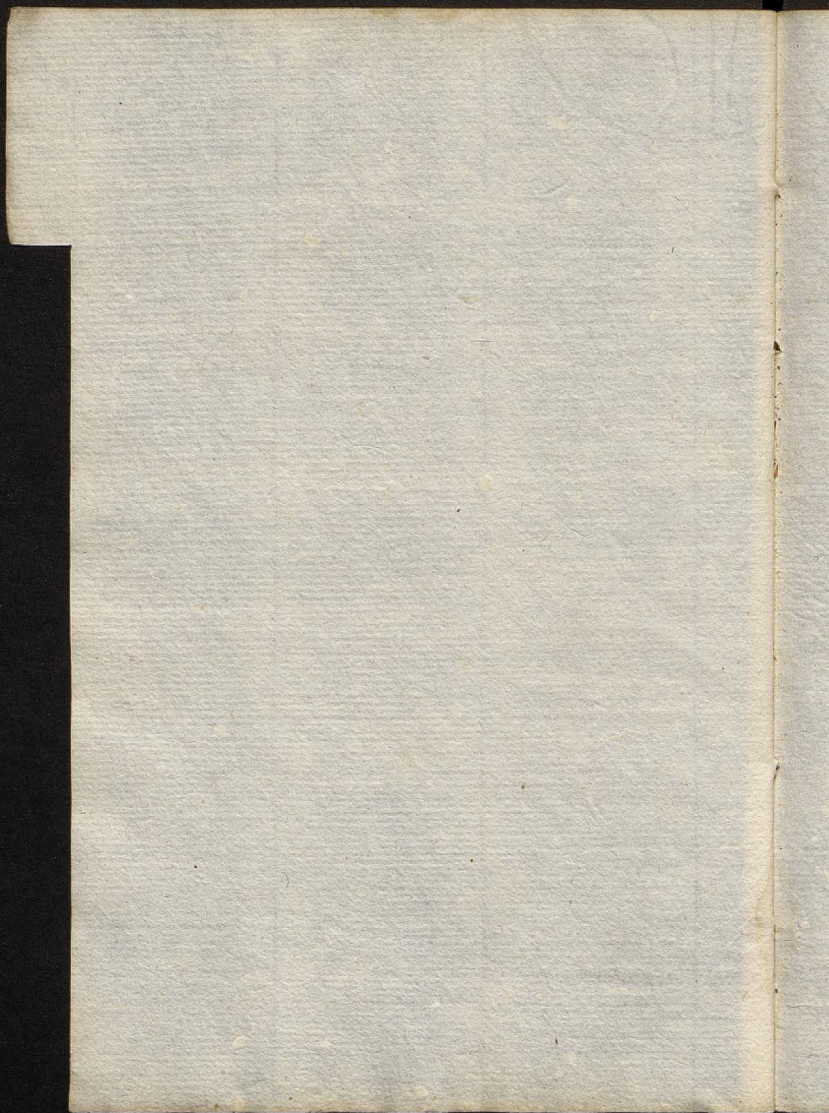
t
len
er,
u
icat.
:
nsq
dum
tūi-
bri
li
or
llam
us
am
lli
mol
in
ers.

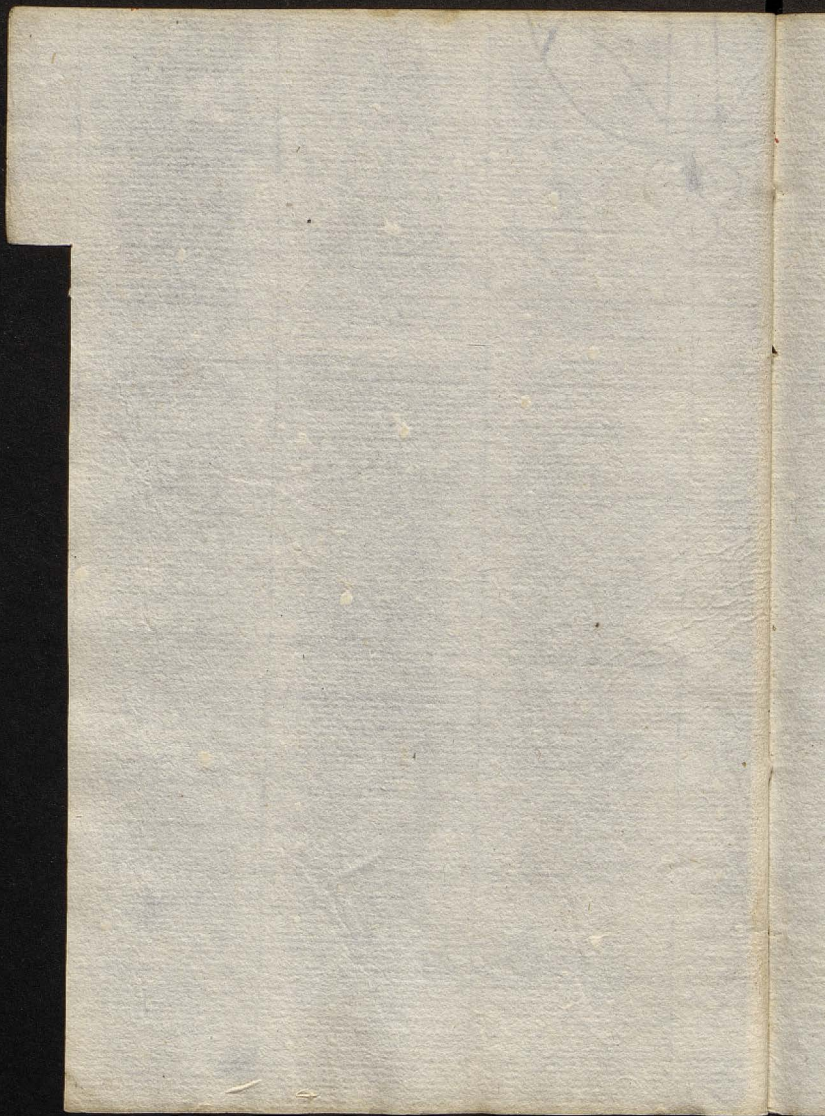
[Faint, mostly illegible text in a Gothic script, possibly representing a list or a table of contents. The text is written in black ink with some red initials or rubrics.]



D

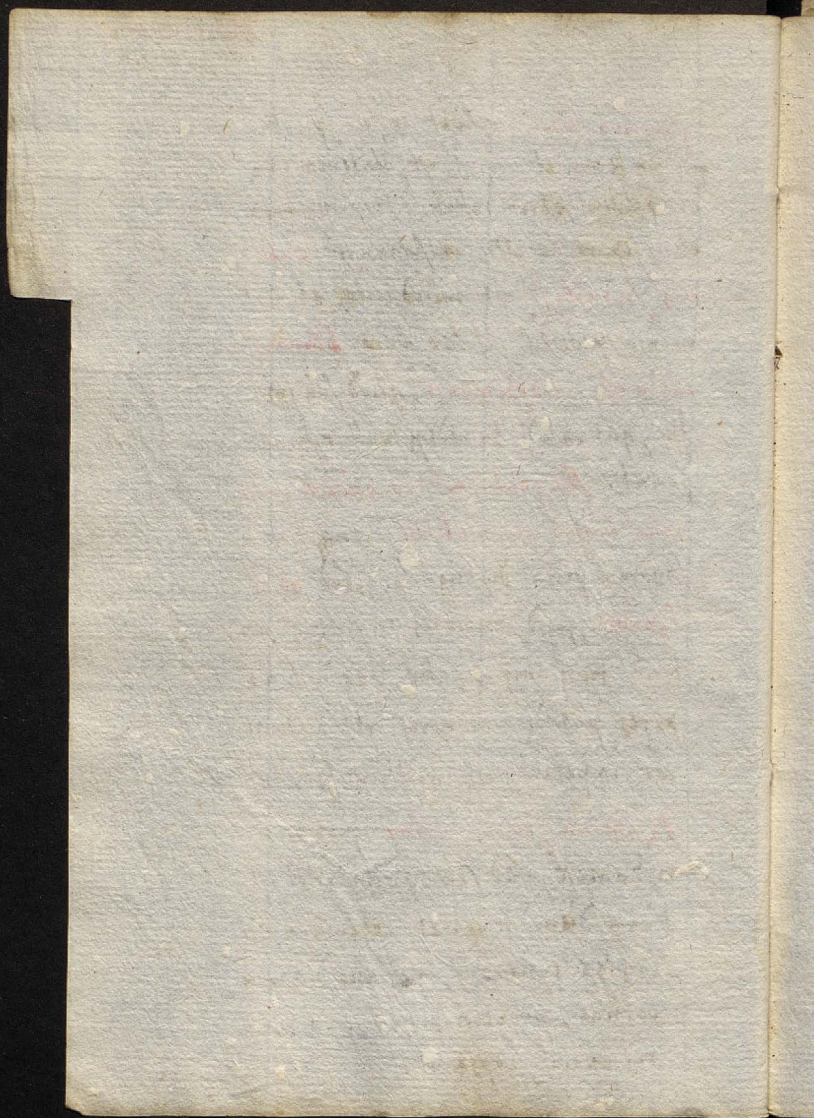


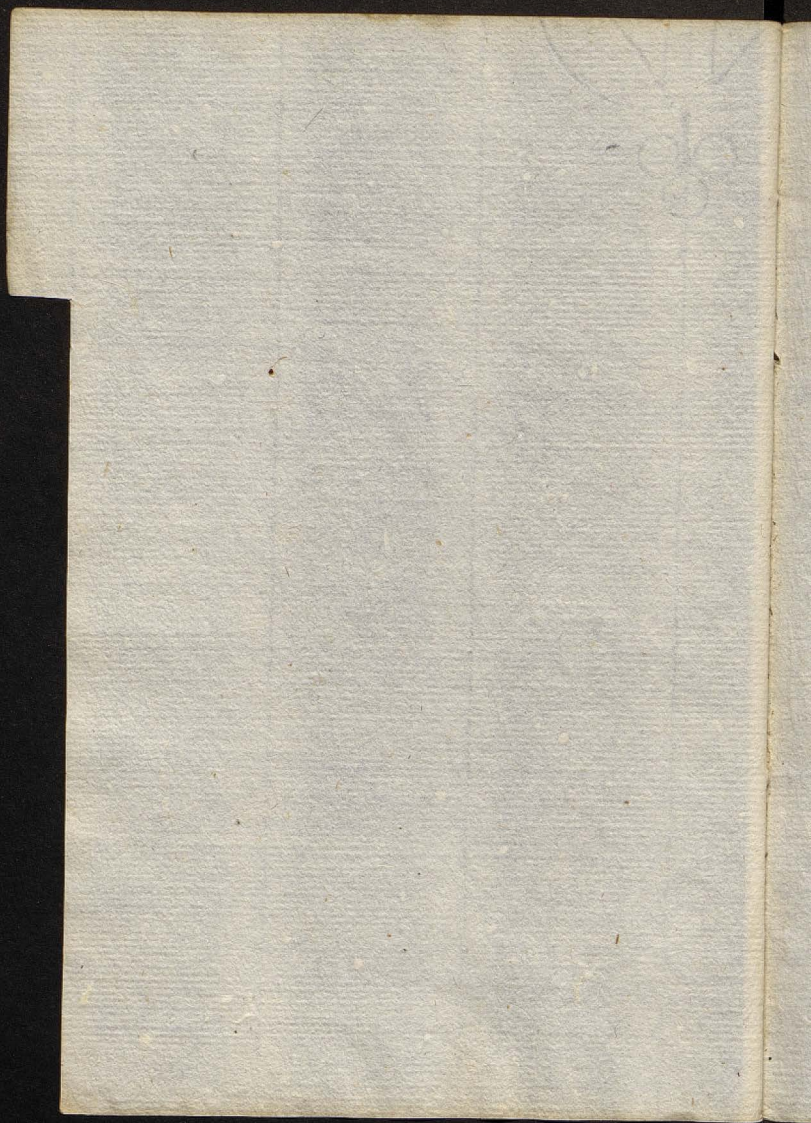


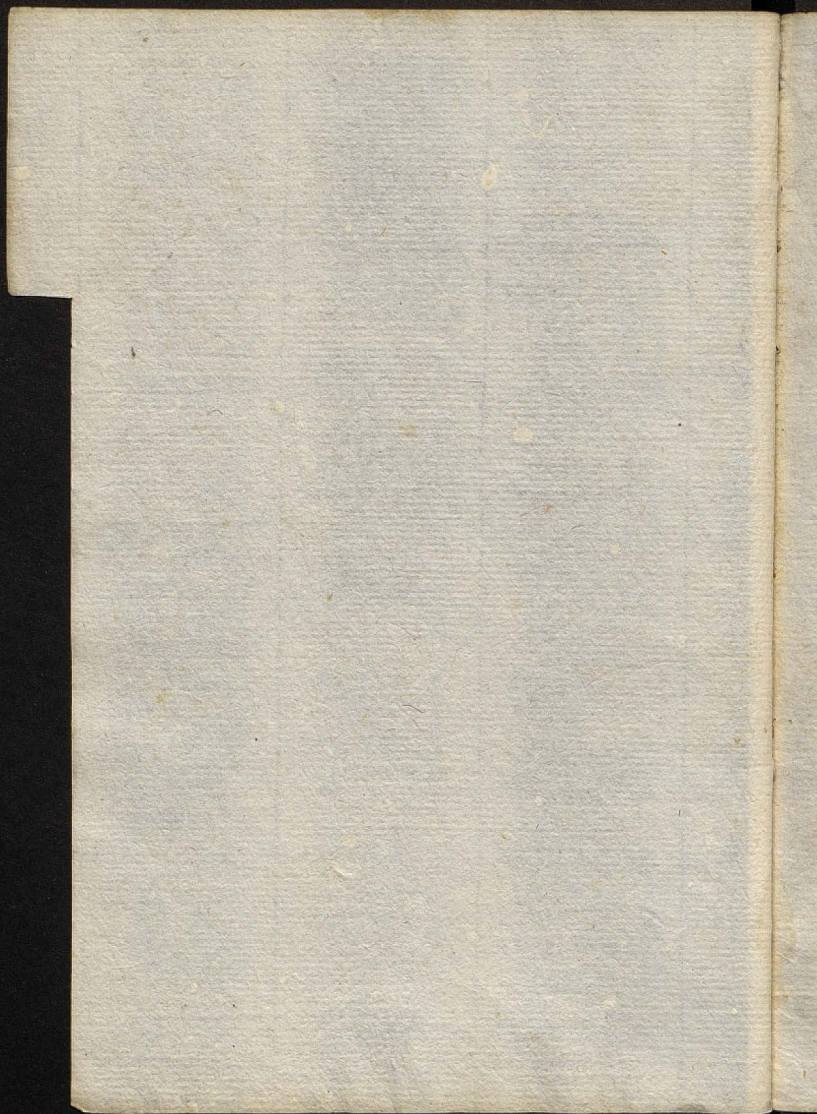


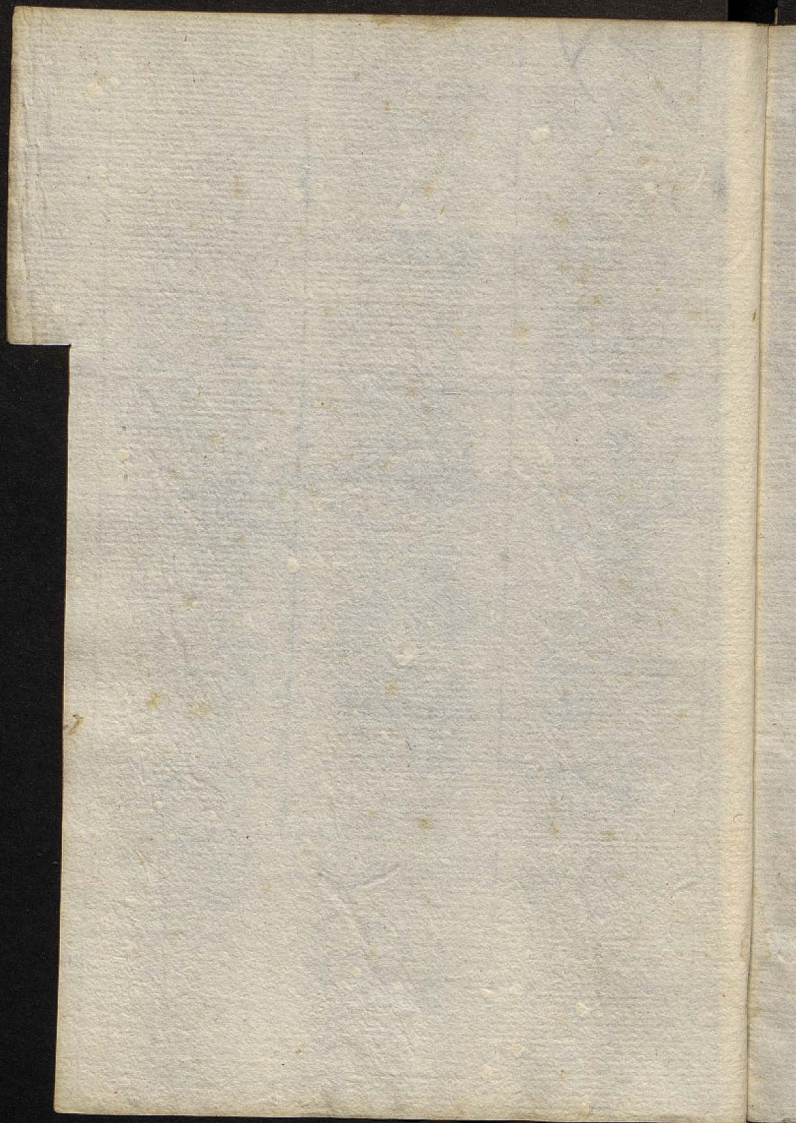
Ephemera febris reſidet in ſolo ſpiritu
 qui ut tenuis et vagus eſt, ita leuem citiq;
 diſſipabilem febrem inferit. Proprium autem
 et inſeparabile Diuiniſ ſignum eſt **calo-
 ris ſuauiſ**, ut mordacitas et acri-
 monia putridiſ. Ideo vero **blanduſ**
calor eſt in ephemera, quod ſoli ſpiri-
 tuſ, qui calidi humidiq; ſunt efferve-
 ſcant. **Aequaliſ eſt in eadem pulſuſ**
celer tamen ac validuſ, eaq; nota a
 ſanorum pulſu diſtinguitur. Sed **ob id**
aequaliſ quod humores in arteriſ con-
 tenti non impelluntur, nec vlli va-
 poreſ putridiſ vel acreſ vel maligni
 cor impetunt, ut in ceteriſ febriliſ.

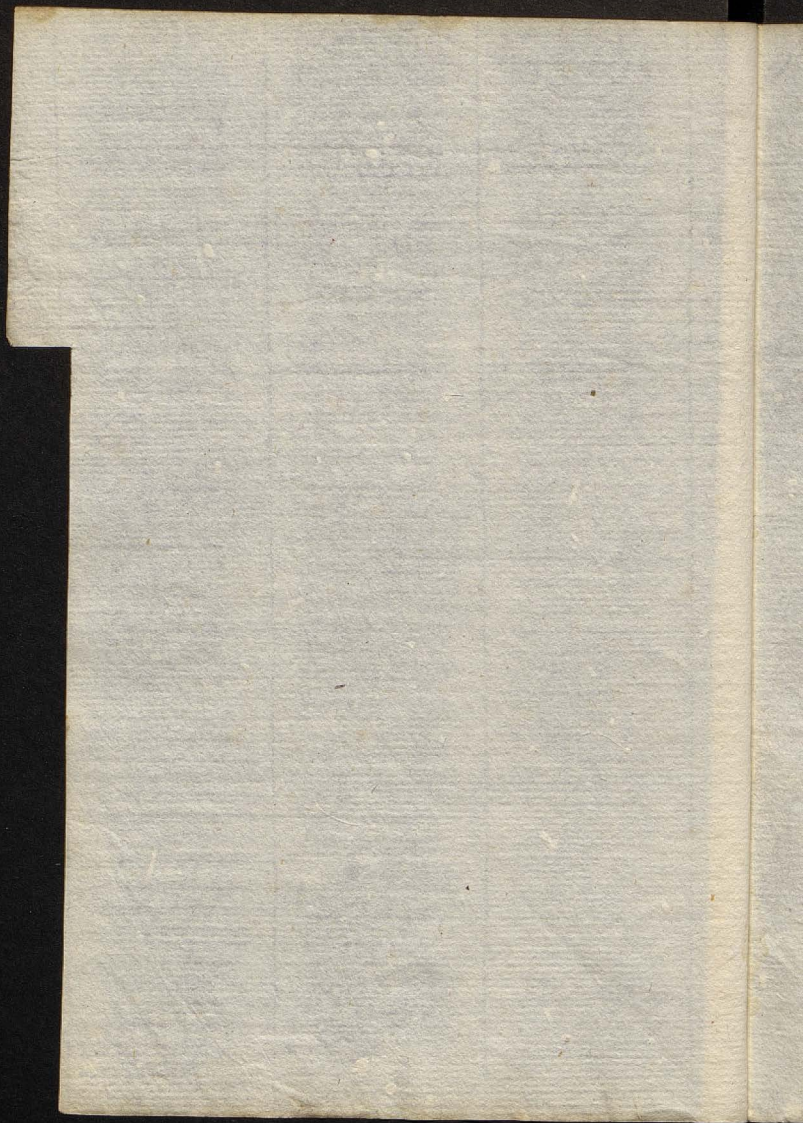
Naturaliſ ſimiliſ urina quia non
 in humore, ſed ſolo ſpiritu vitiiſ eſt.
 Vnum diem ſi ſeparet ephemeram, vel
 ſimplex ſynochuſ, vel alio dicenda
 nomine, prout a ſpiritubus in humo-
 reſ malū ſerperit.

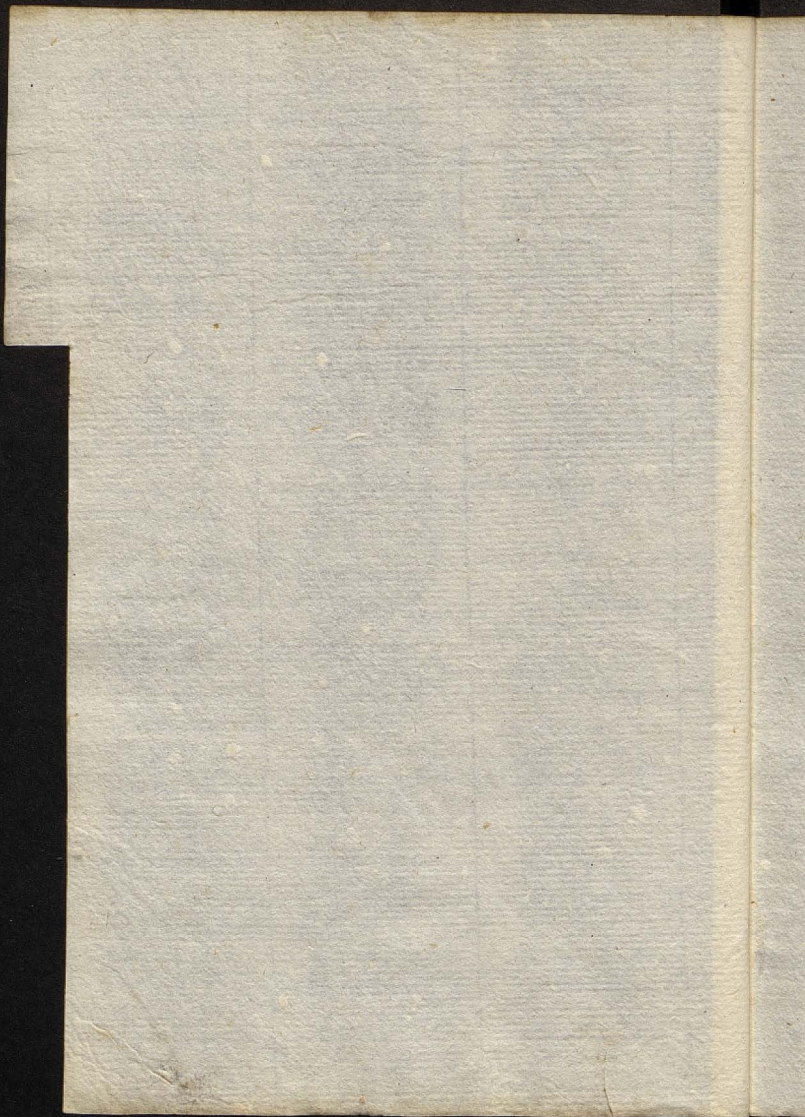


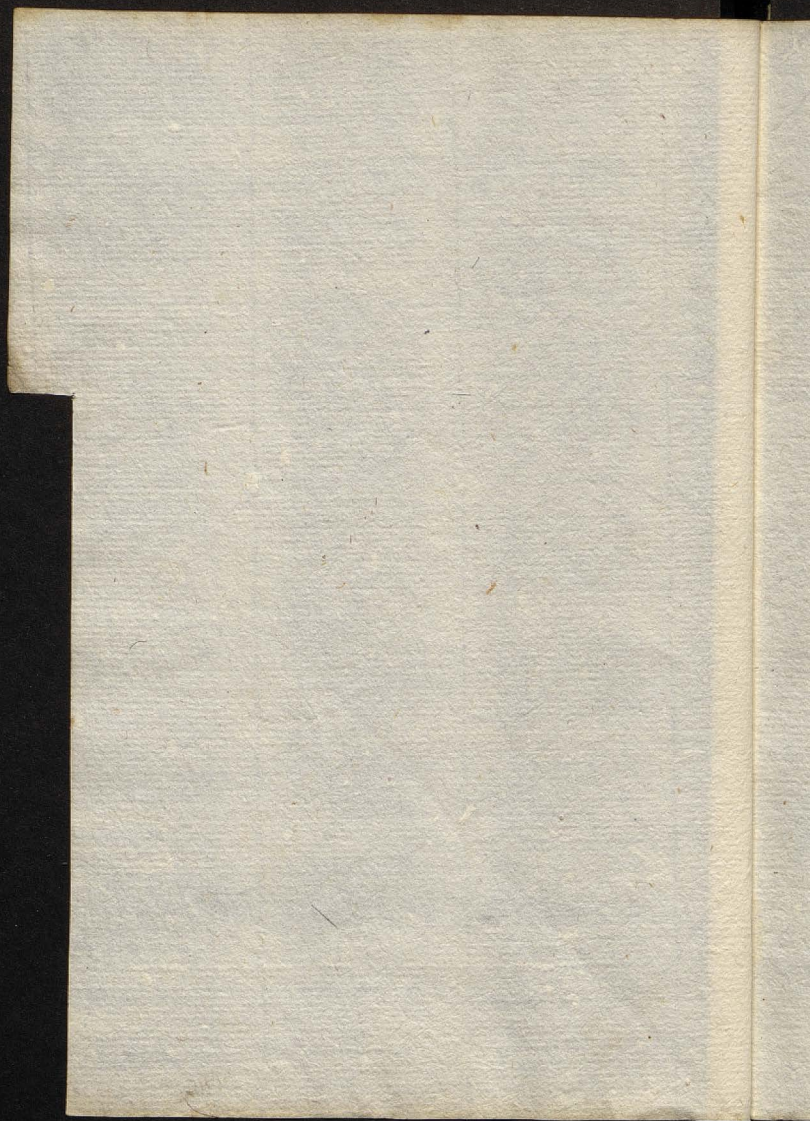


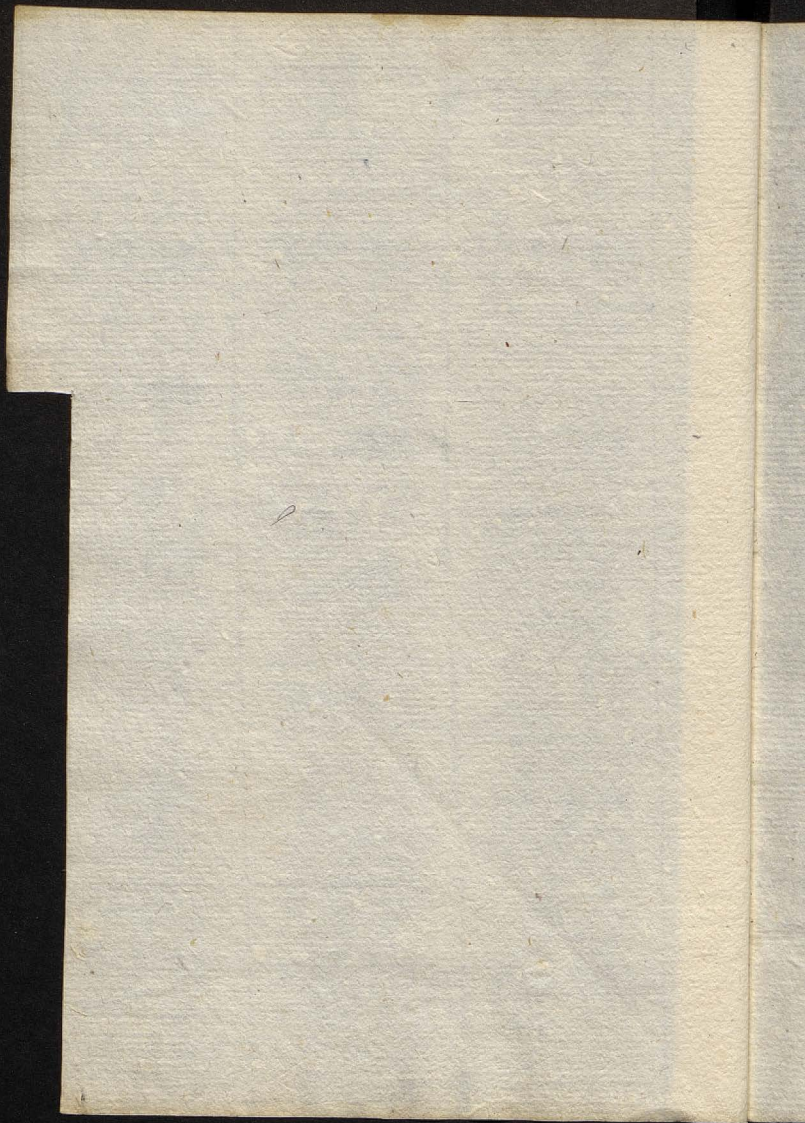


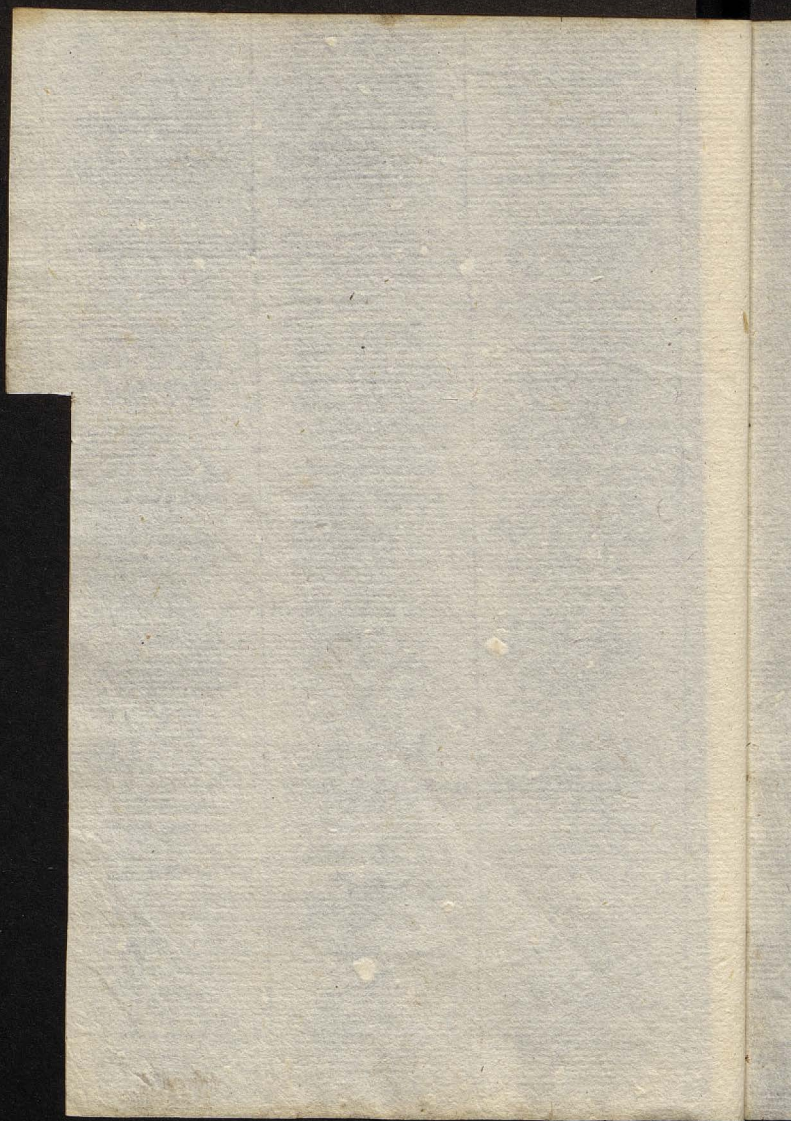




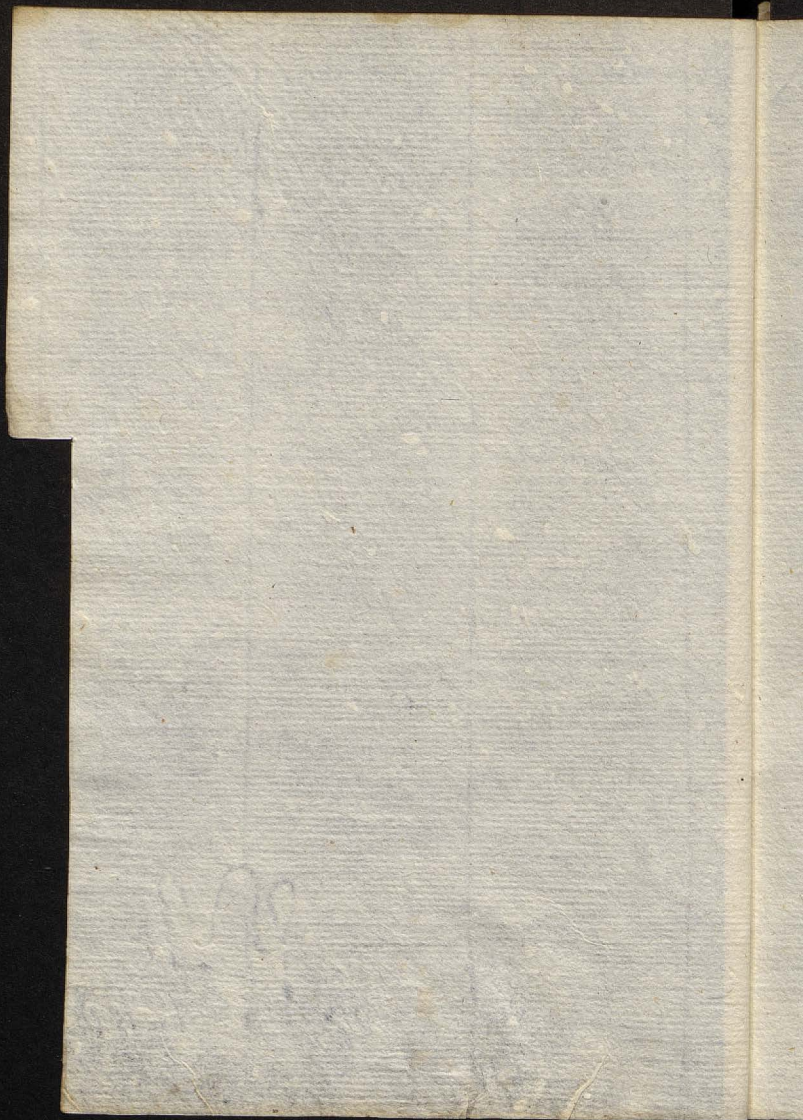


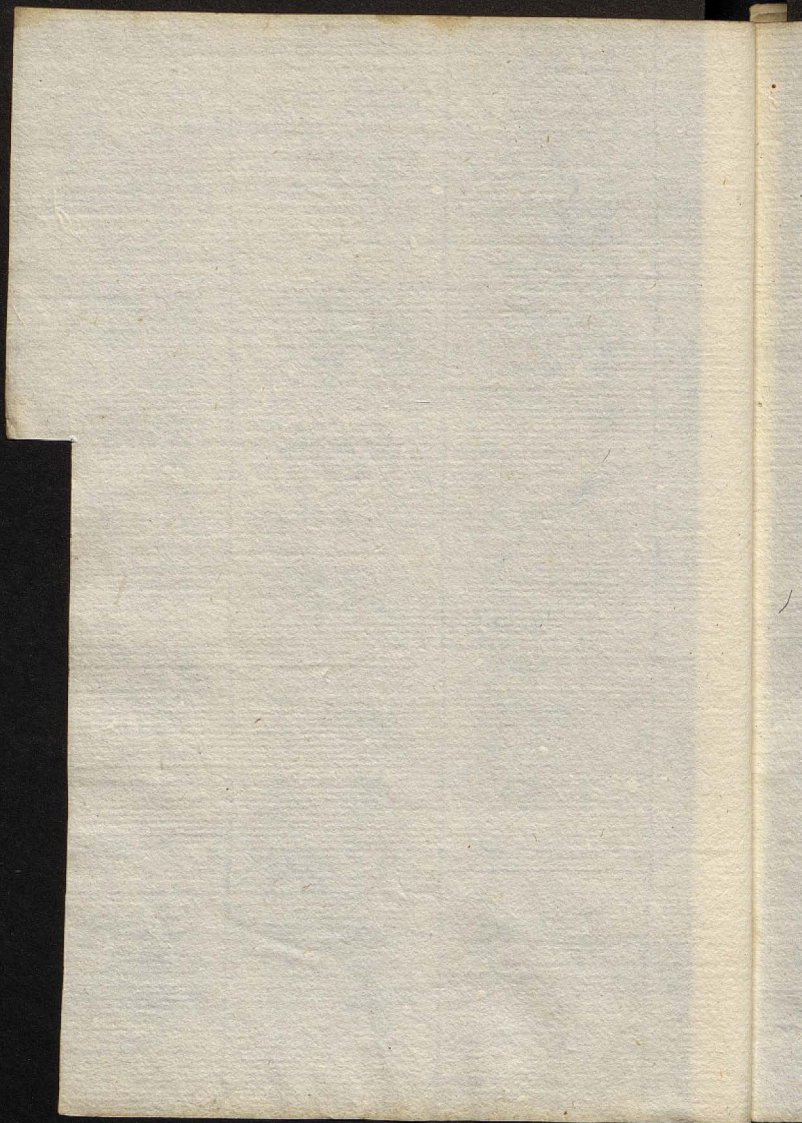


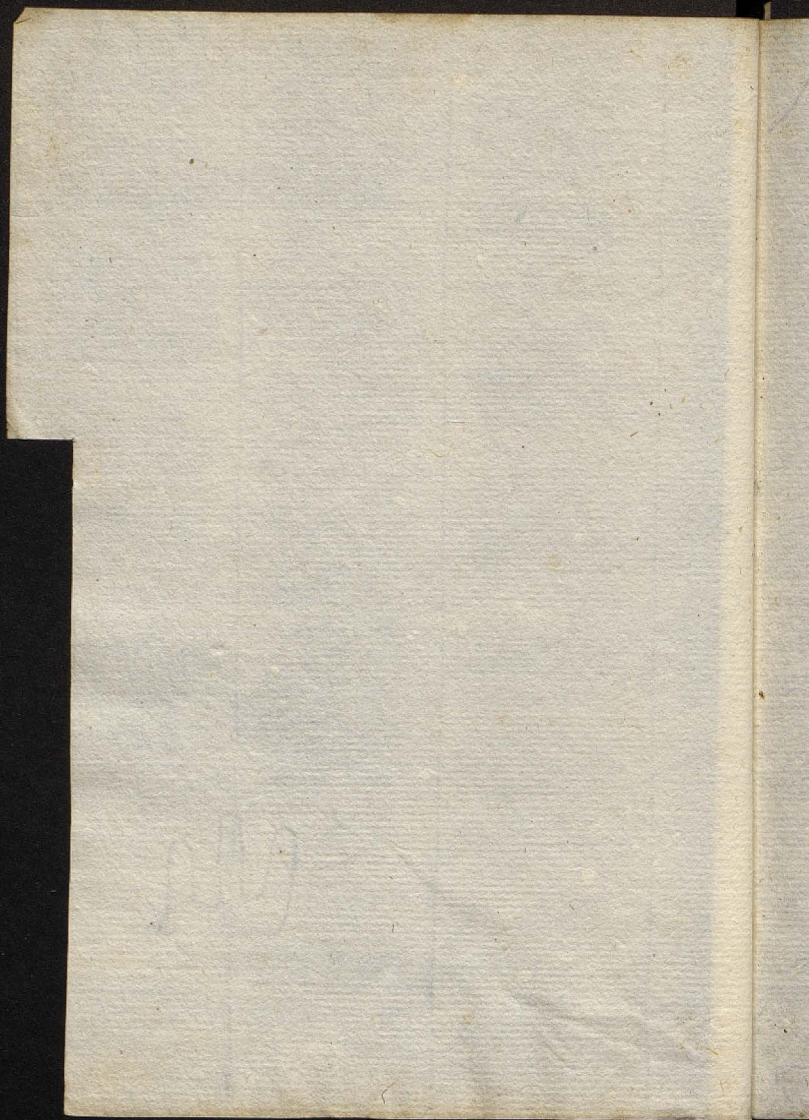


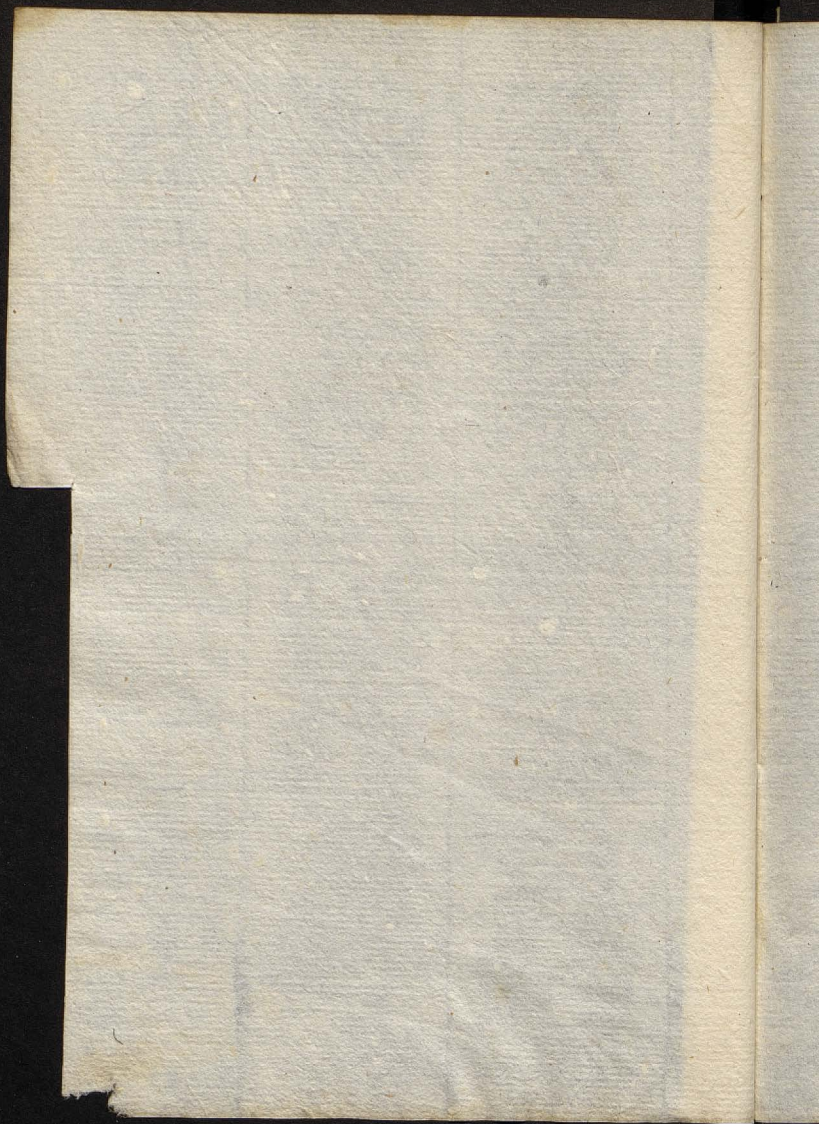


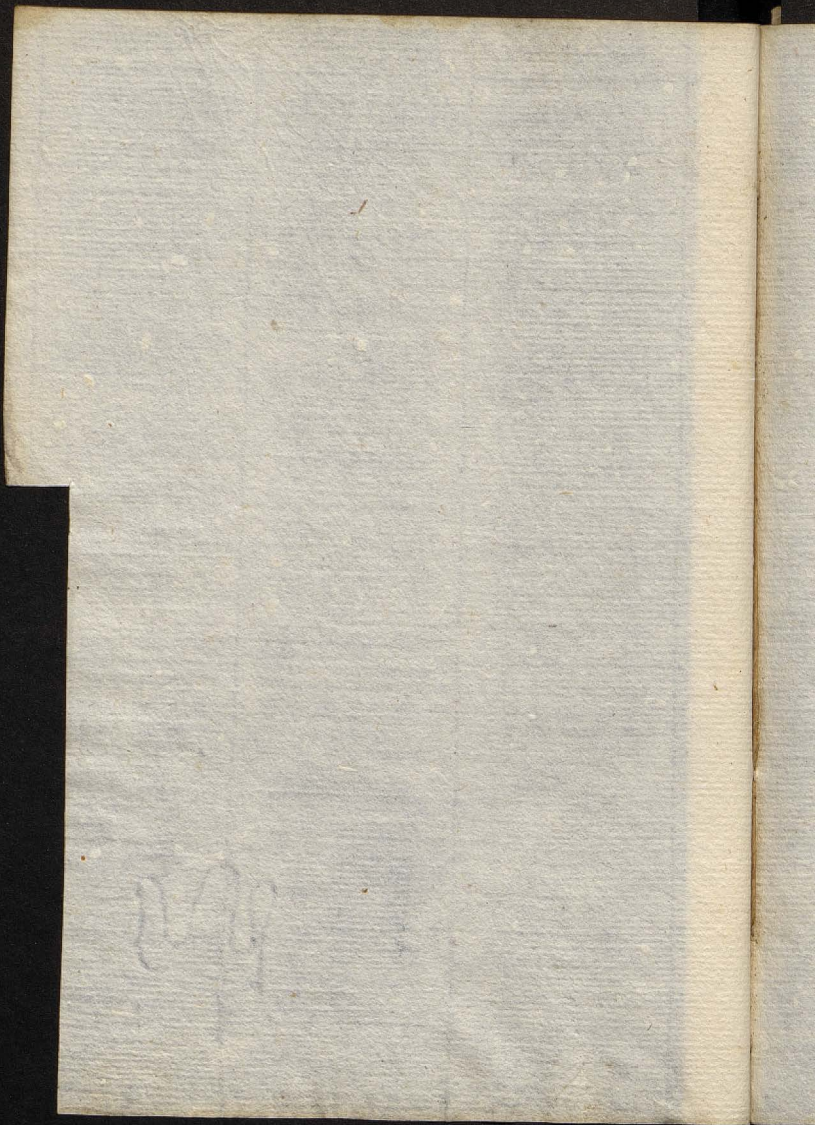
H



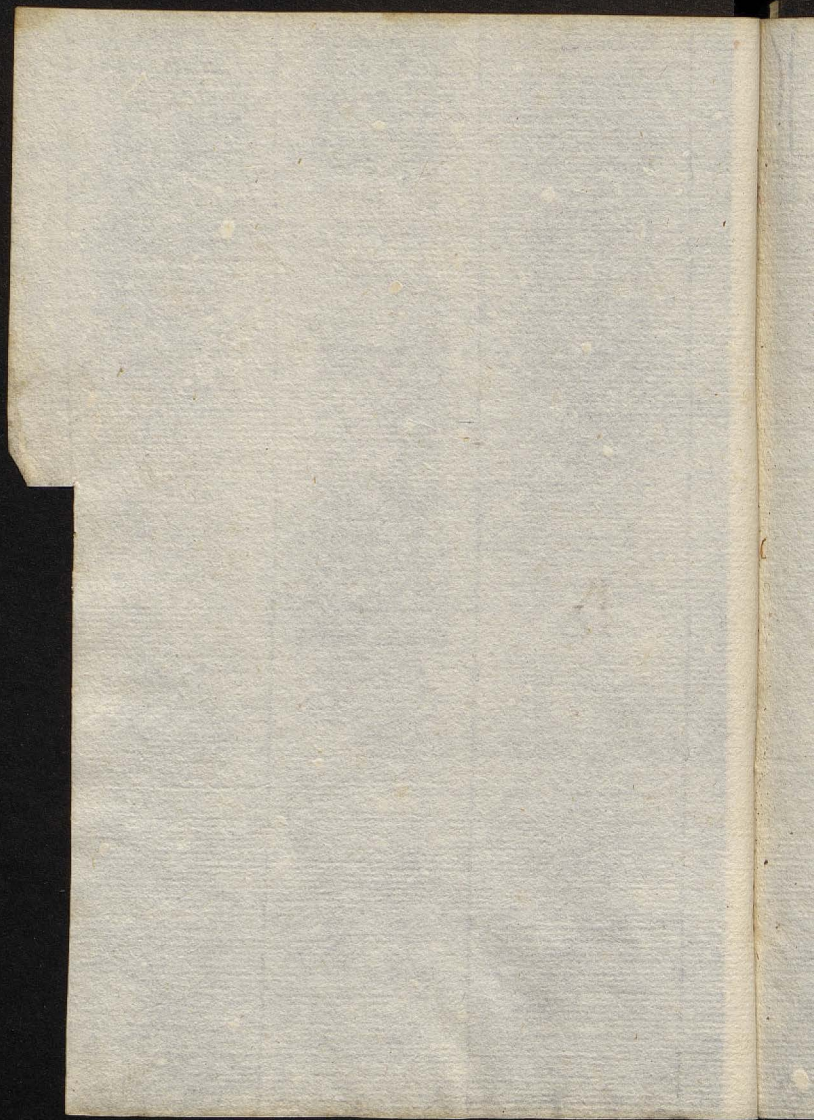




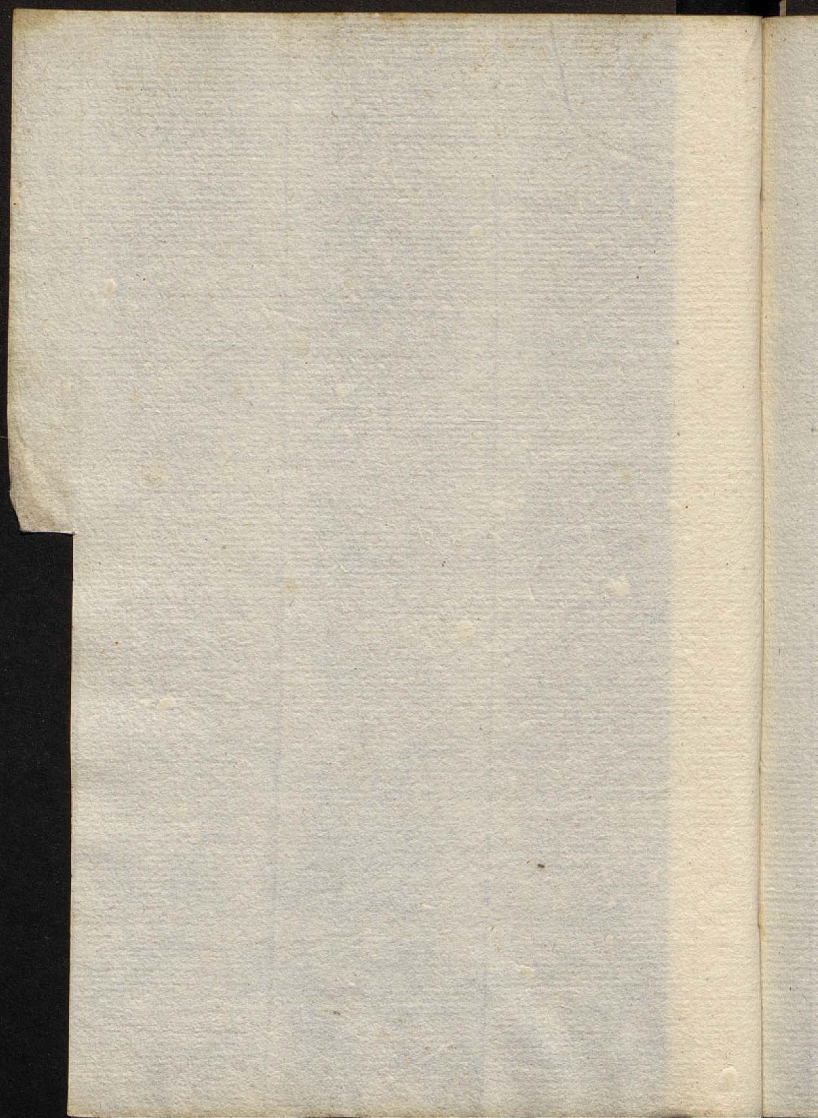


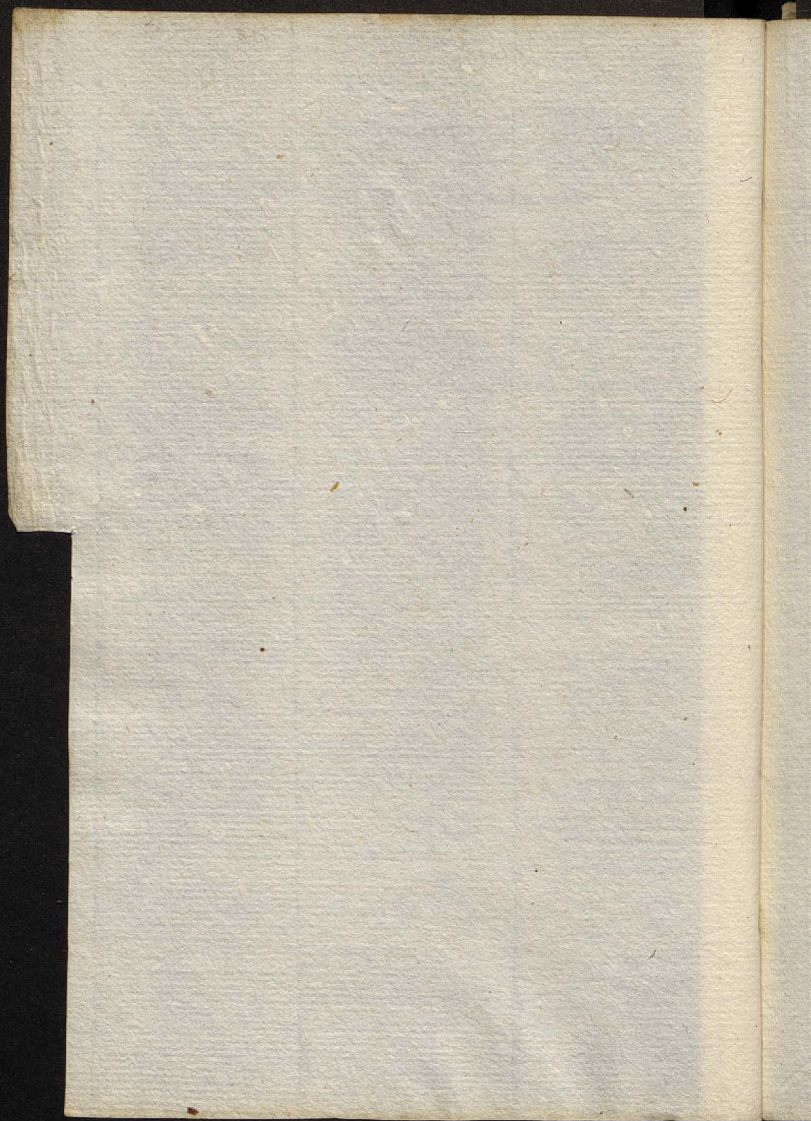


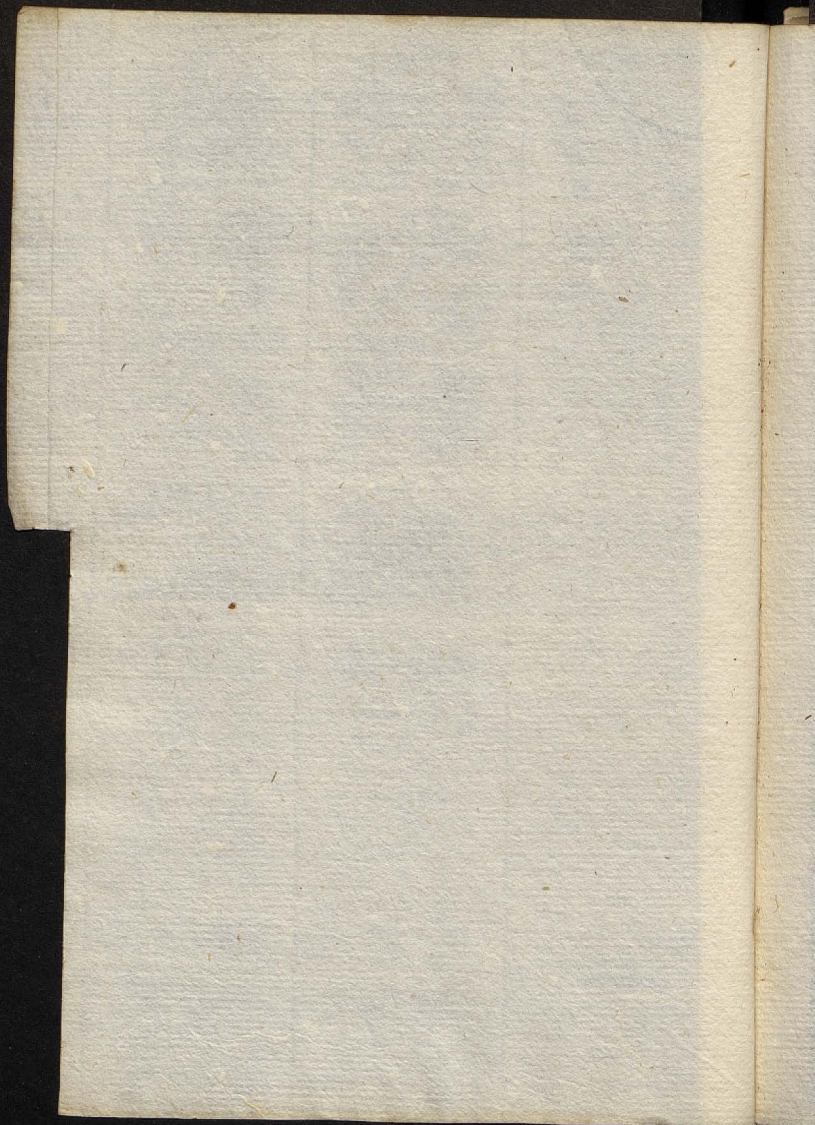
A

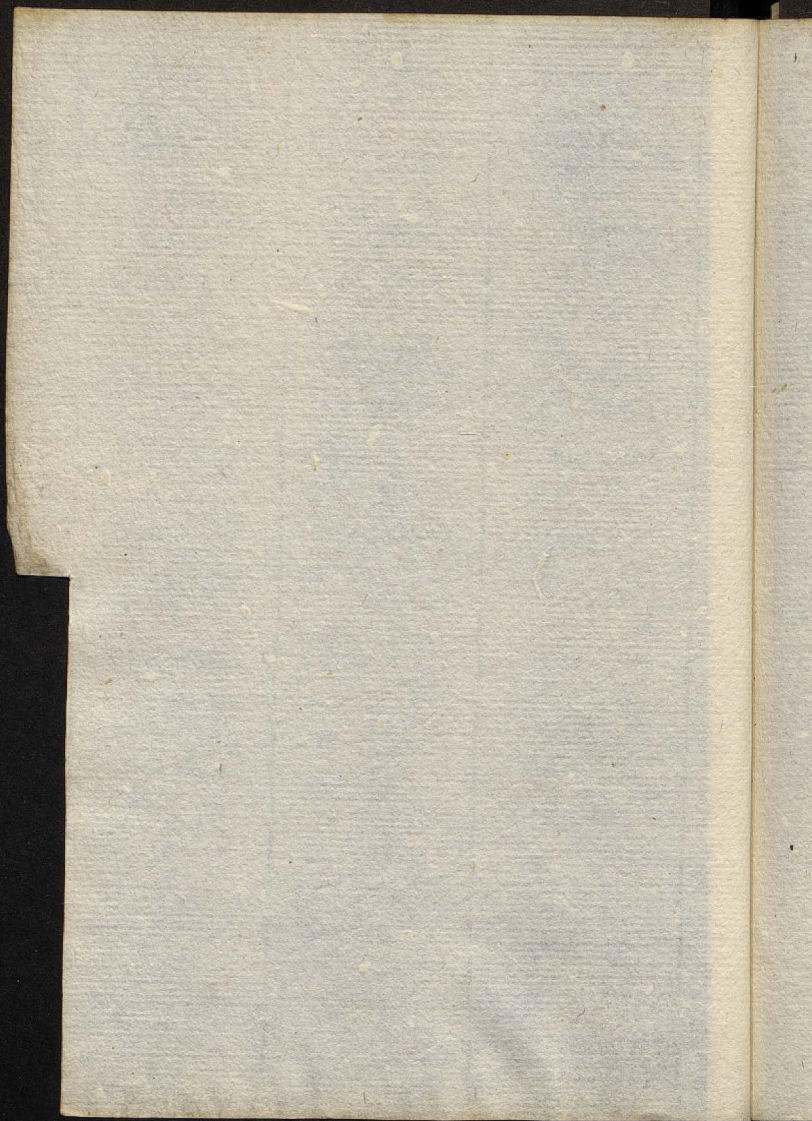


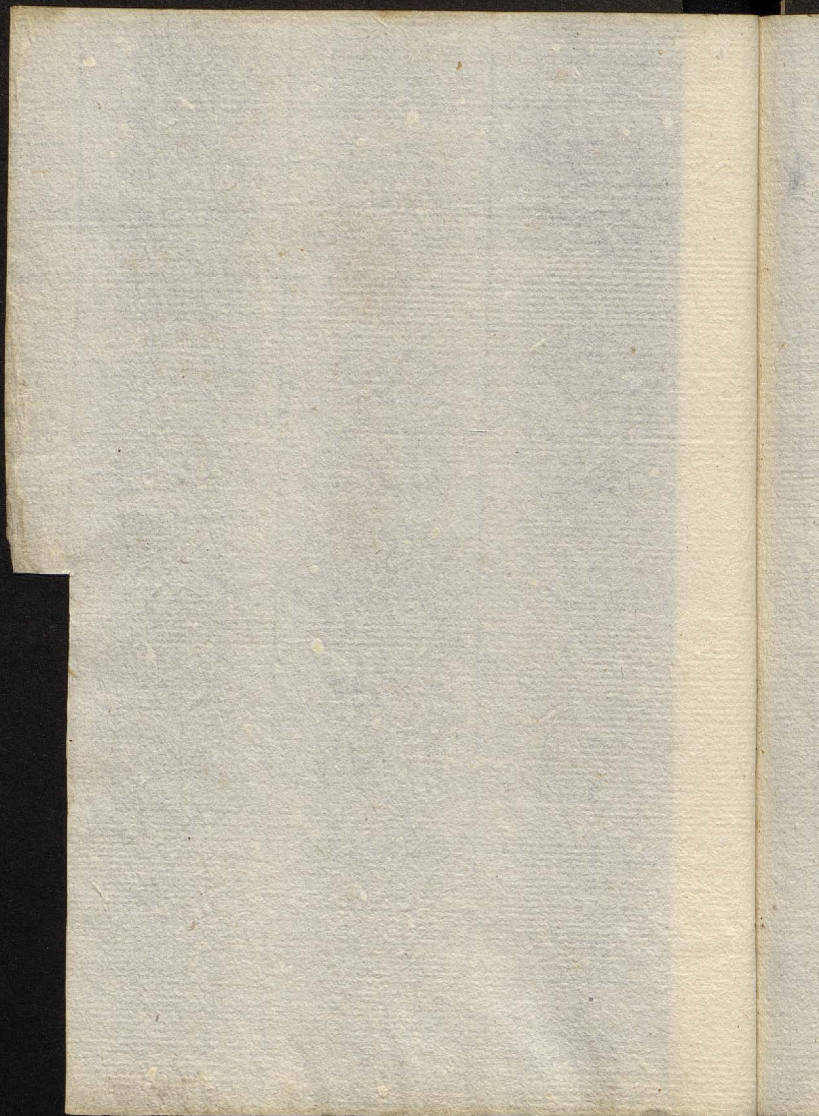
K

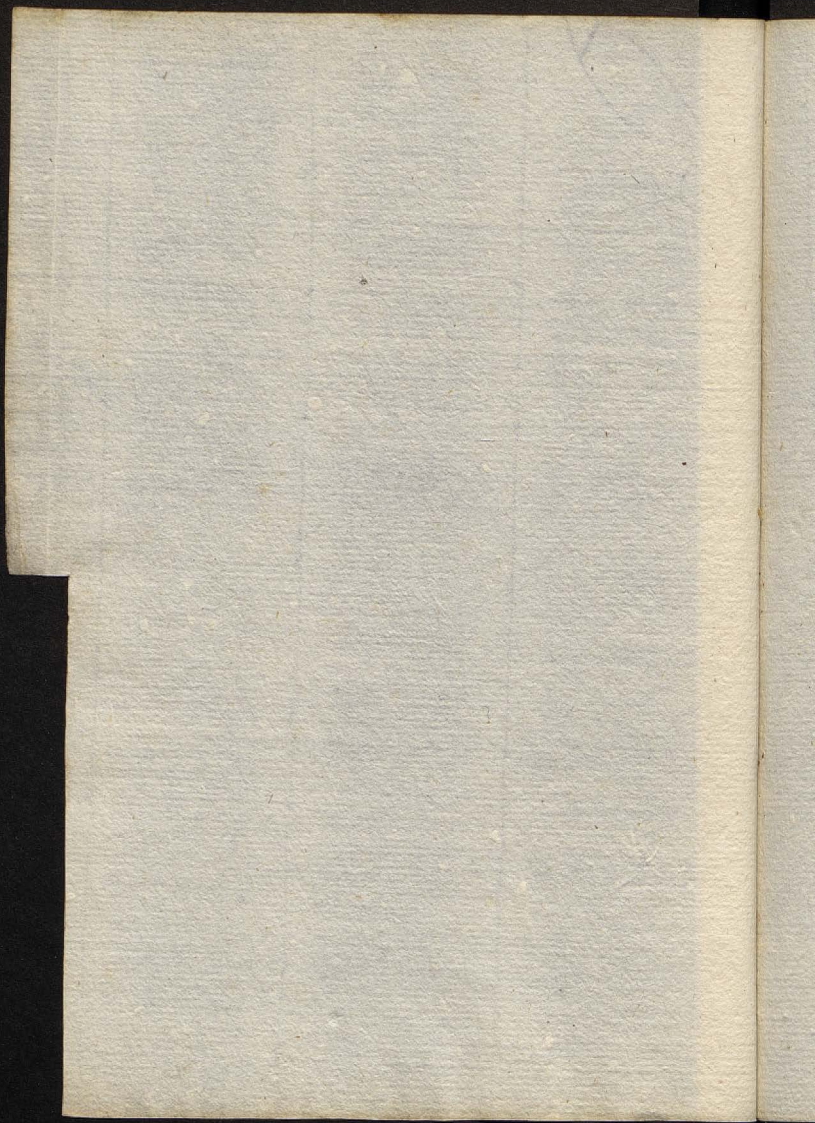




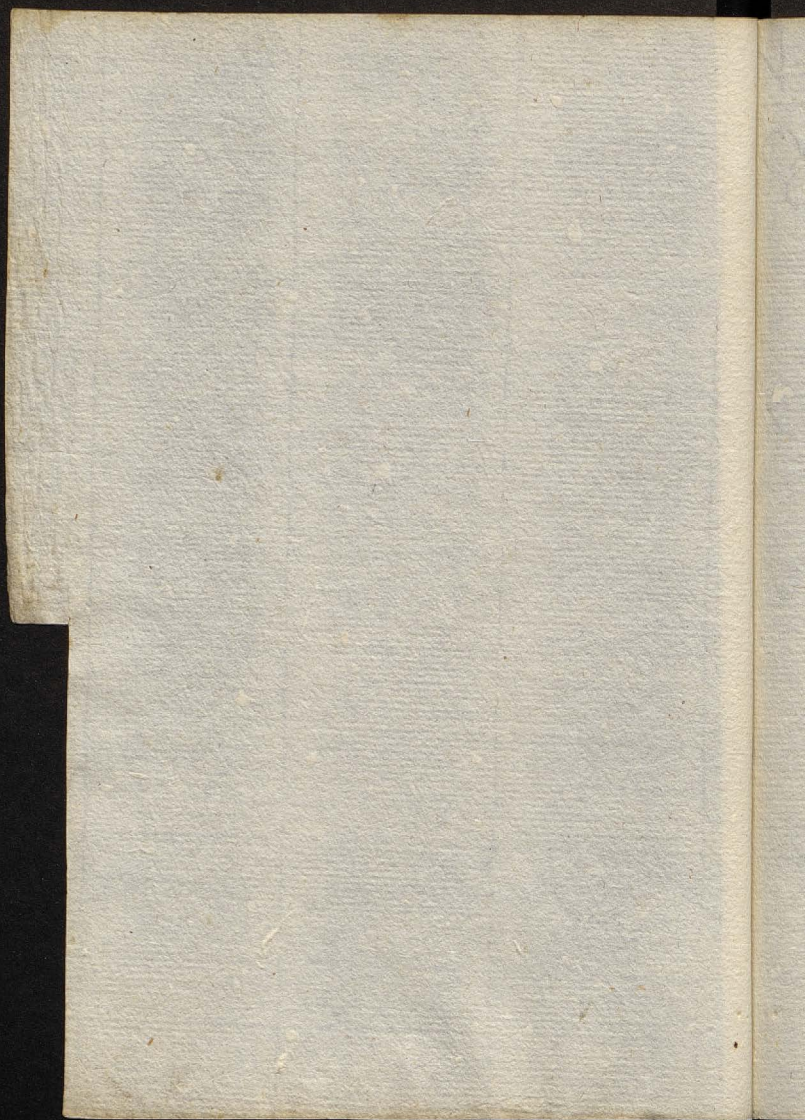


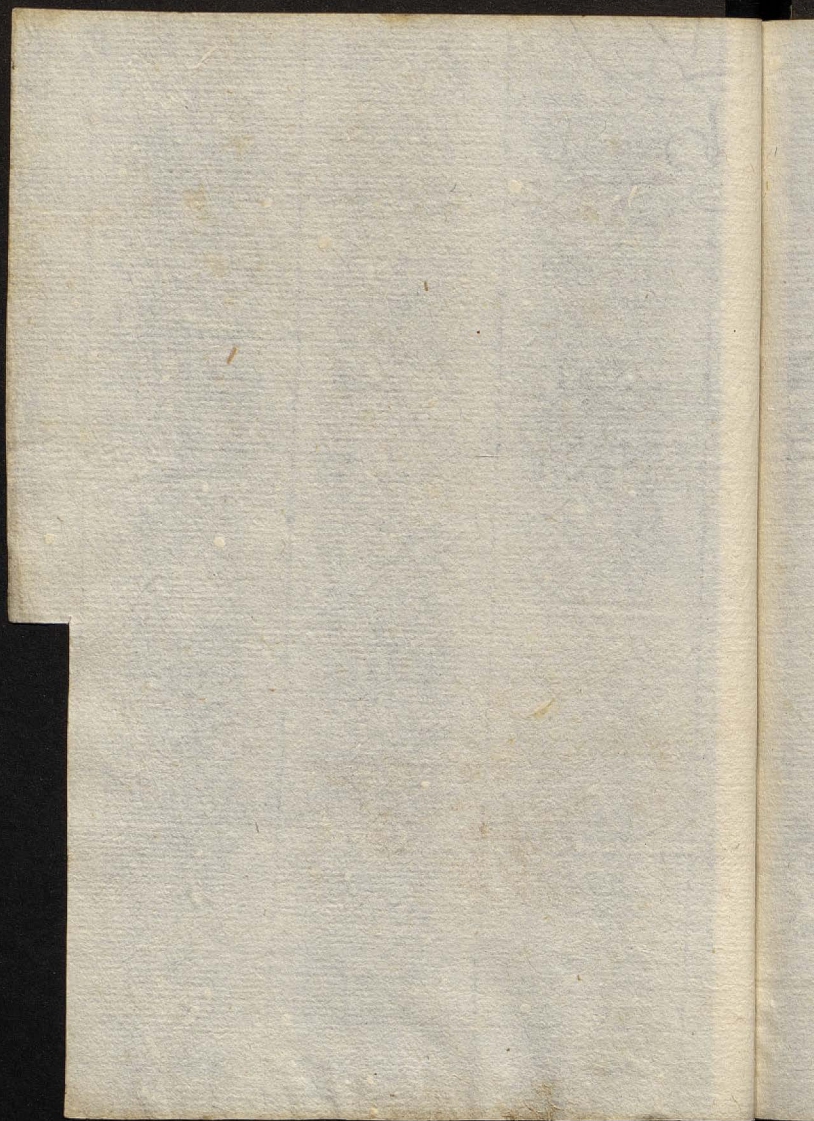


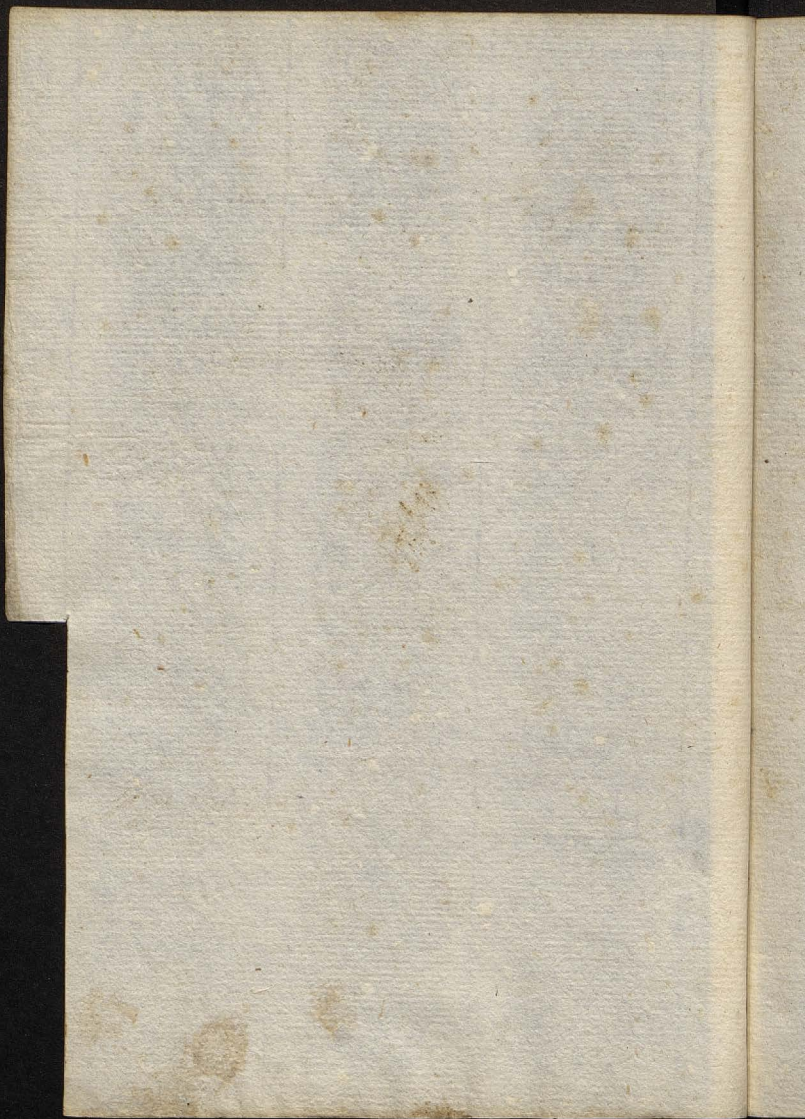




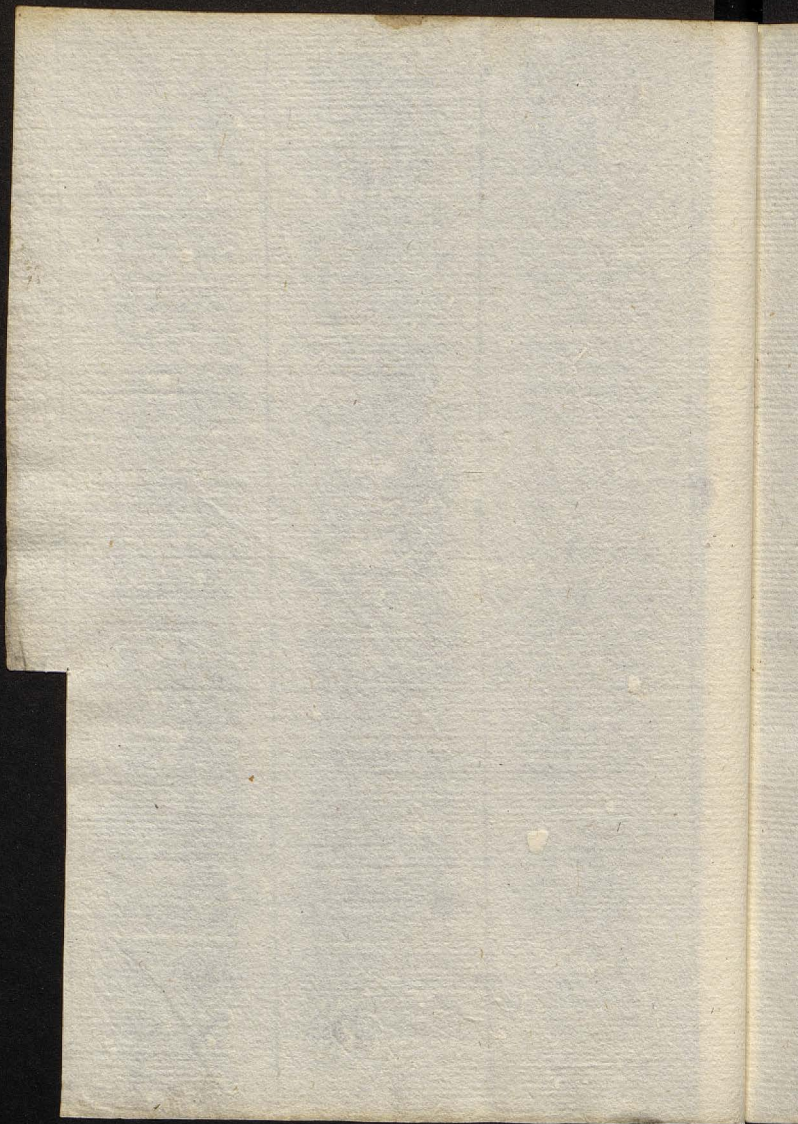
M

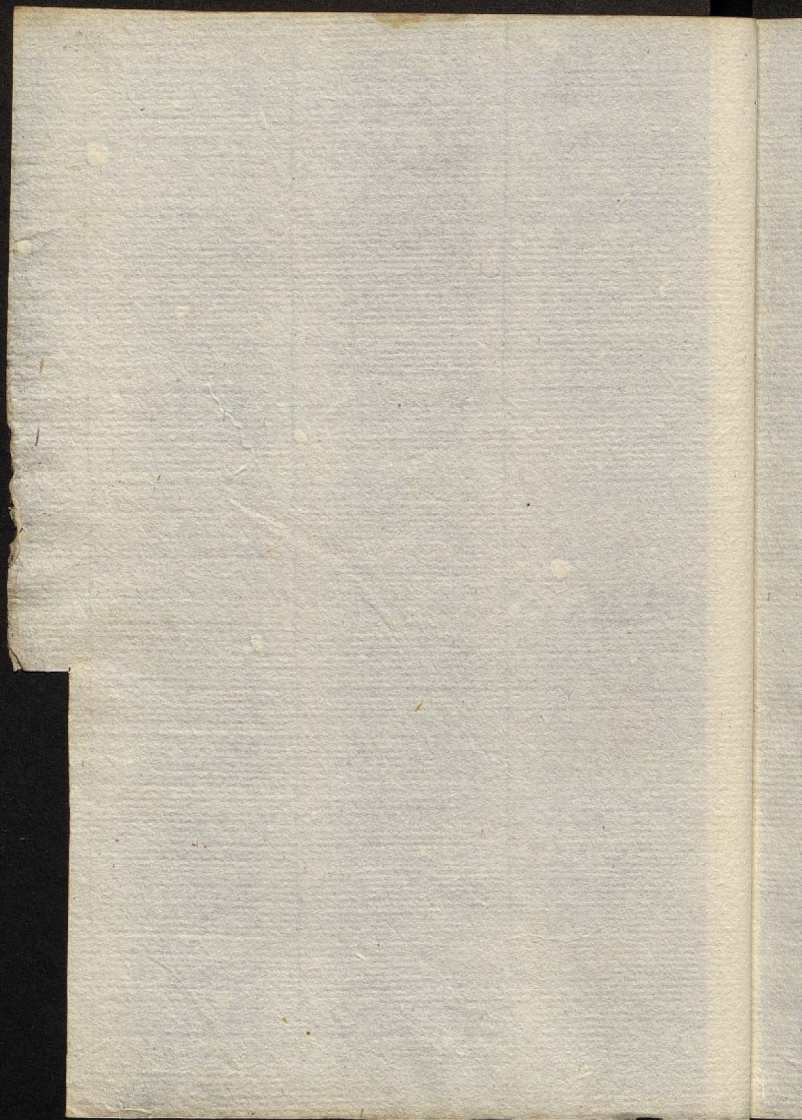






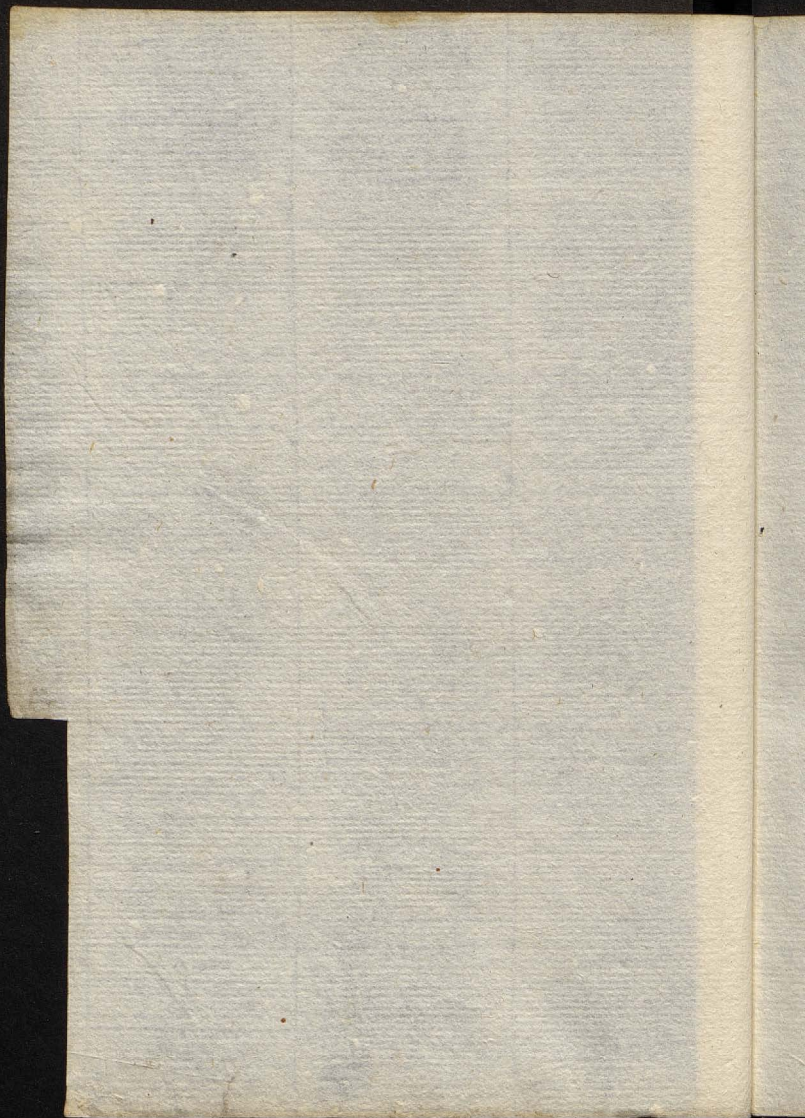
100

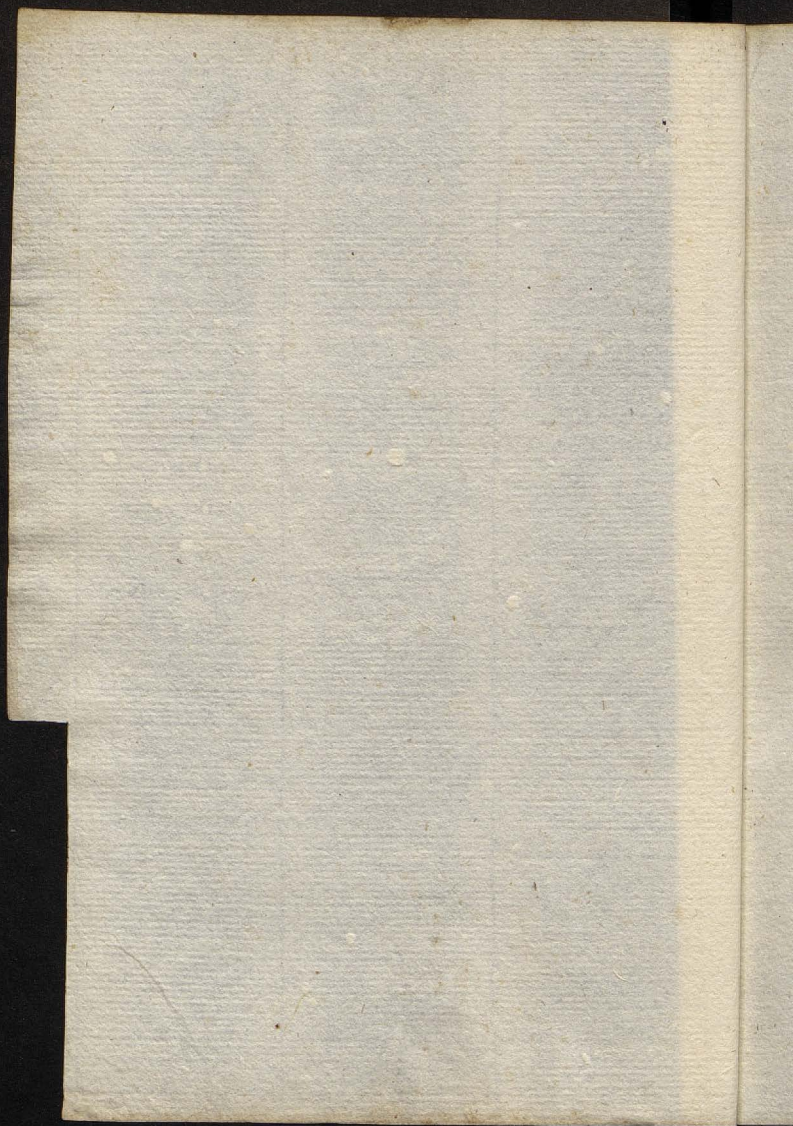


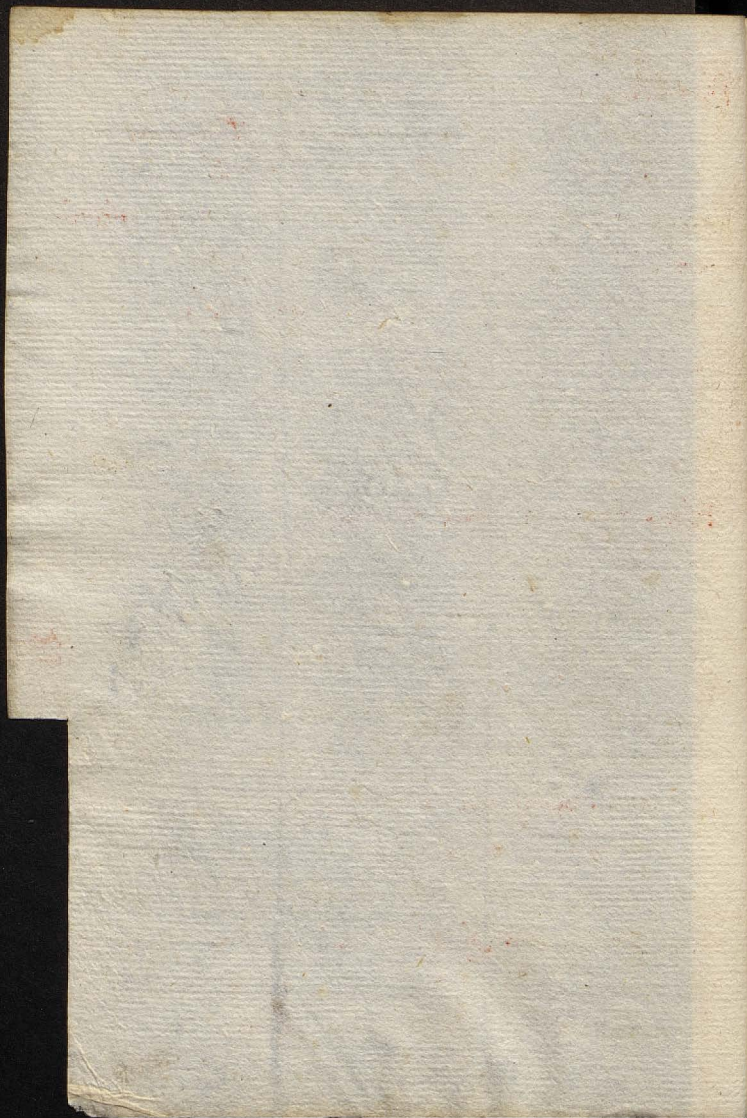


42

0







P

c

d

e

f

g

h

i

j

k

l

m

n

o

p

q

r

s

t

u

v

w

x

y

z

Phrenitis est cerebri et membranarum eius phlegmone cum acuta febre et continuo delirio. Phlegmone quidem a calidiorum humorum affluxu: febris quoniam affecta nobili parte, Cor in consensum trahitur: delirium fit vitiosa cerebri temperatura. Bilis, quae causa phrenitidis, in cerebro turgens vigilas facit. Siq; hinc incipit somnus, turbulentus est, non a flatibus, ut in melancholia, maniaq; sed a biliosi vaporis, aut sanguinis acrimonia, calore, motu comito validoq;.

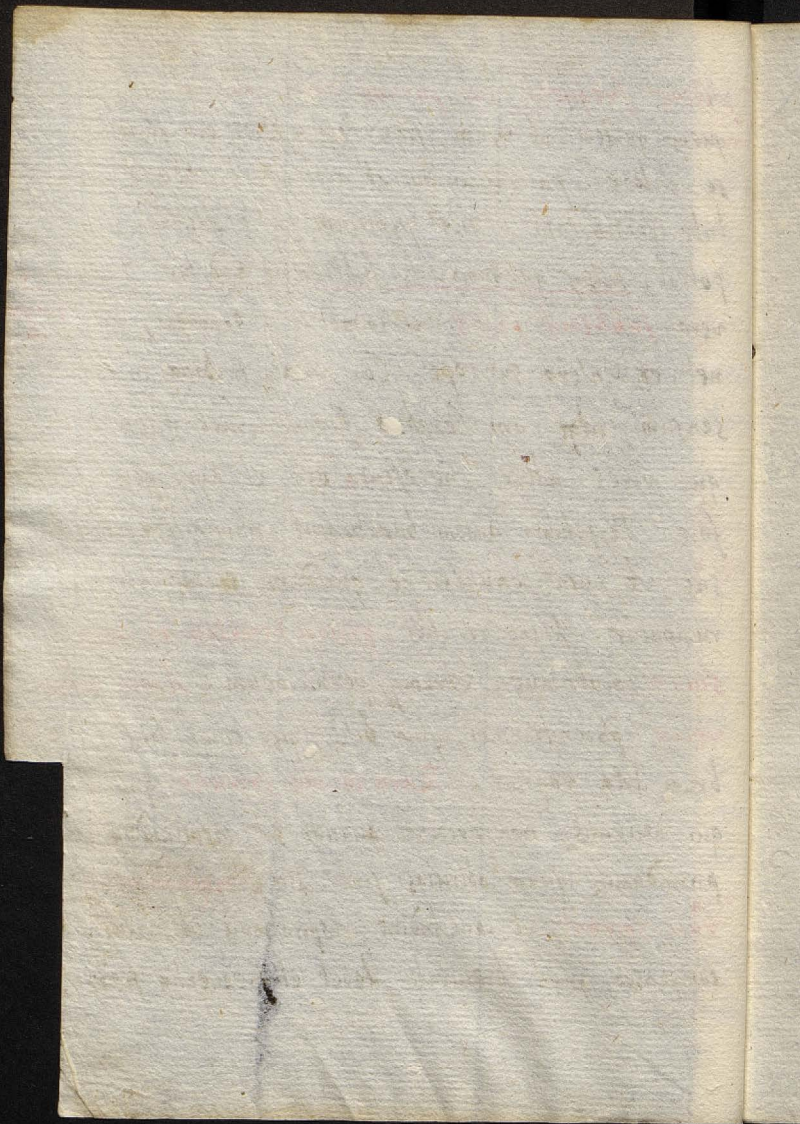
Ferox etiam ex miti responsio, signum est bitescantis sanguinis in cerebro. Quumq; sint in phrenitide deliria duorum generum: unum cum visu: serium et ferax alterum: securior est iocosa garrulitas quae calidioris duntaxat sanguinis exuperantiam indicat. Magis horrenda ferax et seria, cuius melancholicus atersq; sanguis est causa. Nonnunquam vero phrenitici prius feroces placidi subinde fiunt, vel metu quo refrigerant spiritus, ut quum vincula proferuntur: vel sedabilis paroxysmo. Squallidi sunt oculi cum lacrymis ab imbecillitate spiritus animalis, qui plurimus exhauritur per vigilias et febrem. Rubent etiam, adnata tunica phlegmonem patiente propter sanguinis

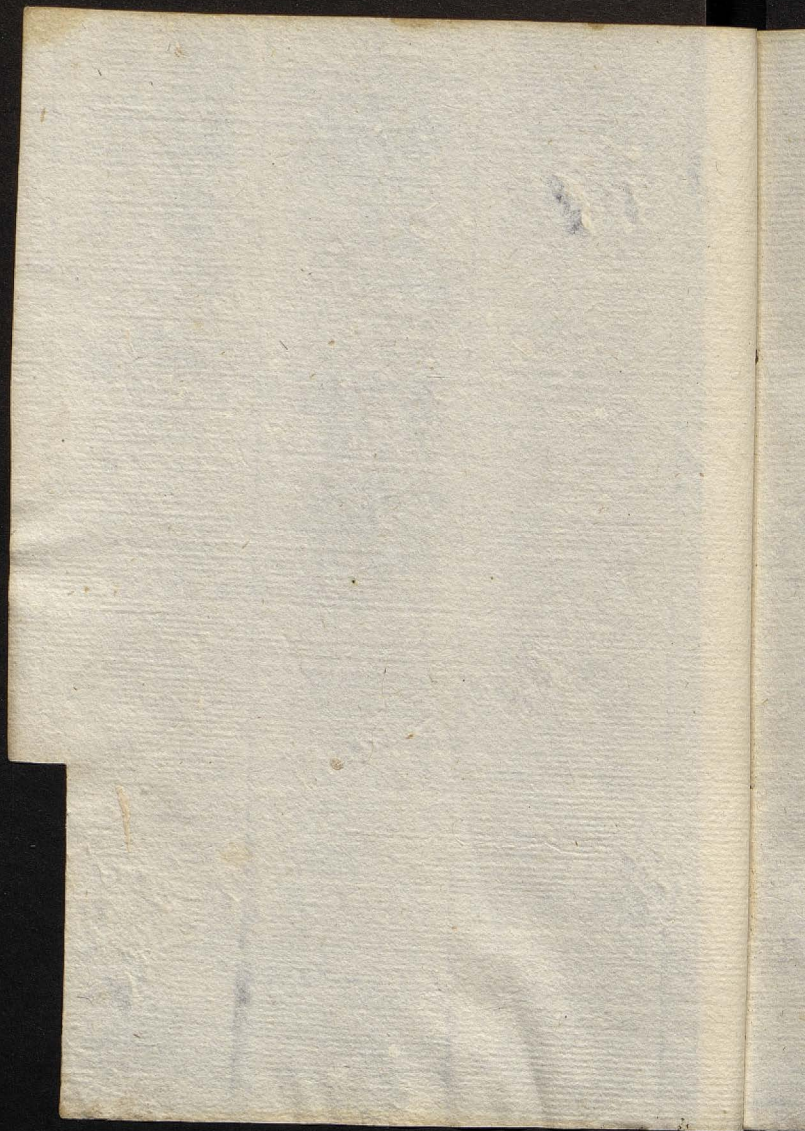
Hæc ad
Phreni-
tica.

P

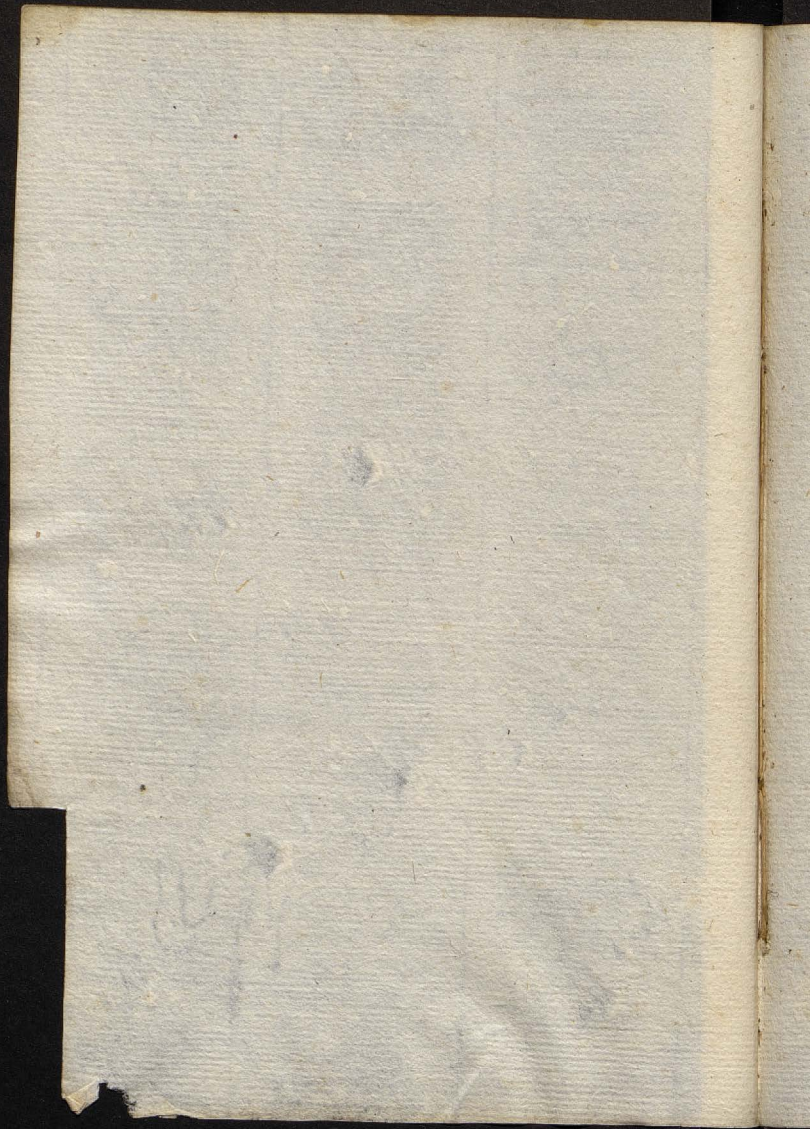
venularum assidentium copiam et acrimoniam. Nec solum
oculi vena rubent, sed et *tument reliquis capitis ve-*
na caloris Cerebri sympathia, quo sanguis sursum attra-
ctus Cerebri primum, inde Capitis venas implet, atq;
distendit. *Stillat tum sanguis e naribus* erosā
potius acrimonia sanguinis, quam aperta venā. *Lingua*
Scabra fit et aspera sanguinis appulsu, quo etiam non
raro nigricat. Ob bilis humoris subtilissimi motum
in Cerebro multa se phreneticis offerunt imagines,
quas quoniam hi sermone conantur explicare, *loqua-*
ritatis vitium incurrunt. Contenti vero sunt exi-
quo potu quia non sitiunt. Non sitiunt autem,
vel quia siticulosam affectionem non sentiunt, lan-
guida facultate appetitive stomachi: vel quod ardo-
ris causa longius abest a ventriculo: vel quod eis
mens aegrotat. Aliis multa siti torqueri debent, cum
in illis causa sitis abundet intemperies nempe cali-
da siccq;. Non autem re vera *fluccos, aut*
paleas, aut simile quidpiam phrenitici colligunt;
sed colligere se putant, vel cogitationis, vel sensus,
vel utriusq; iudicio destituti. Ut in phrenitide

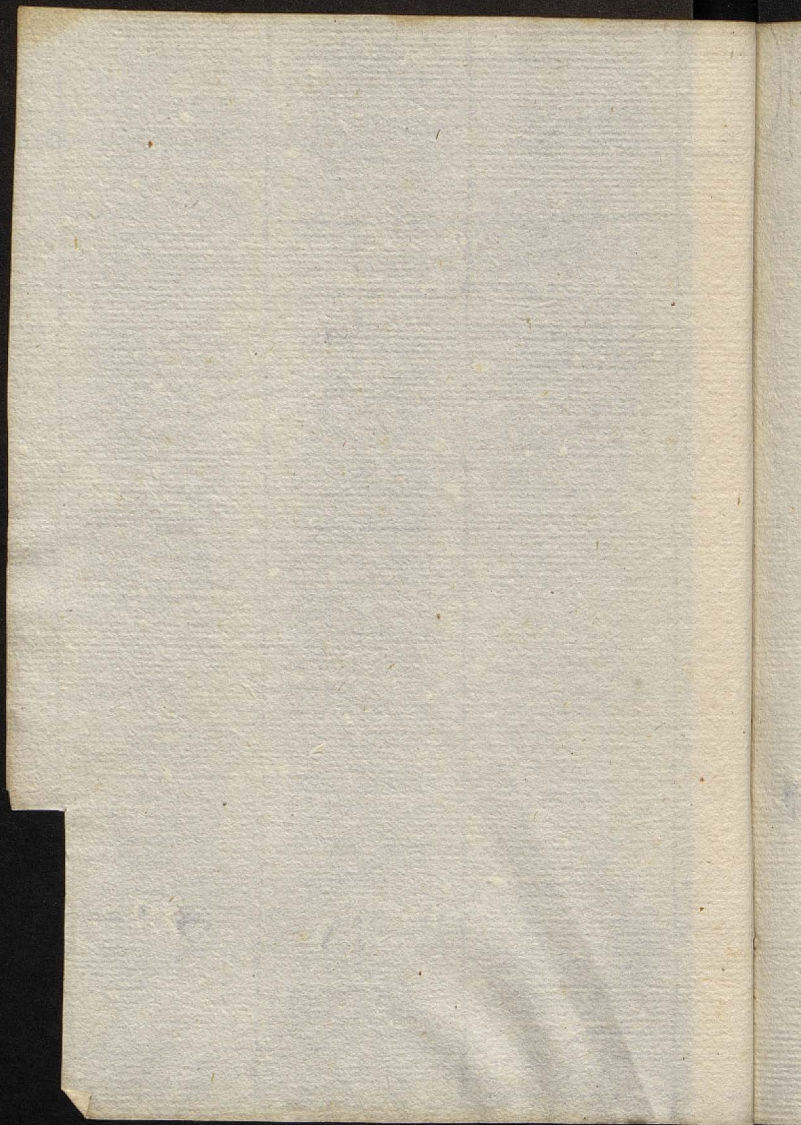
pulsus frequens, sic parvus tactu percipitur: fre-
 quens quidem ob usum, siquidem affectus est ab immen-
 so calore: parvus autem ob arteriarum duritiam a siccita-
 te contractam: quod quoniam satis distendi non
 potest, pulsus quodammodo subtemere videtur. Quum
 vero subtemit pulsus et immodice creber est, immi- ^{ad} _{sim} ^{Progno-}
 net ex Galeno syncope. Cor namque trahitur in con-
 sensum, idque cum Cerebro summo ardet incendio,
 quo vires alteri necessarium est et syncopem af-
 fore. Perpetuum autem hoc habent phreniticorum pul-
 sus, ut cum convulsione quadam motus eorum ab-
 rumpatur. Hinc in illis pulsus tremulum et convul-
sium notamus; utrumque perniciosum. Albet autem
urina phreniticorum, quia bilis, qua tingi solet in cere-
 brum tota rapitur. Rara in illis spiratio quia
 qui delirant, non norunt quando sit inspirandum ex-
 pirandumque quum obliuiosi sint. Itaque magnam et ra-
ram spirant, ut longitudine respirationis id natura
 compenset, quod breuitate debet et frequentia fieri.

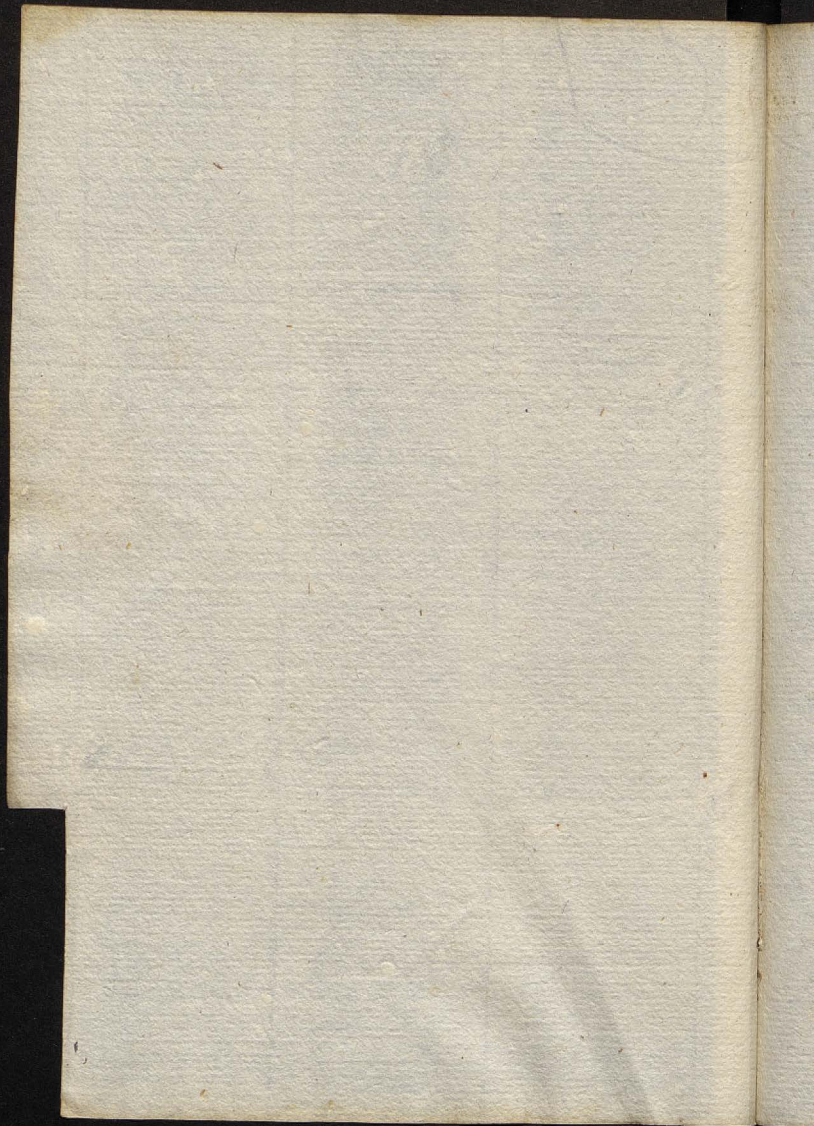


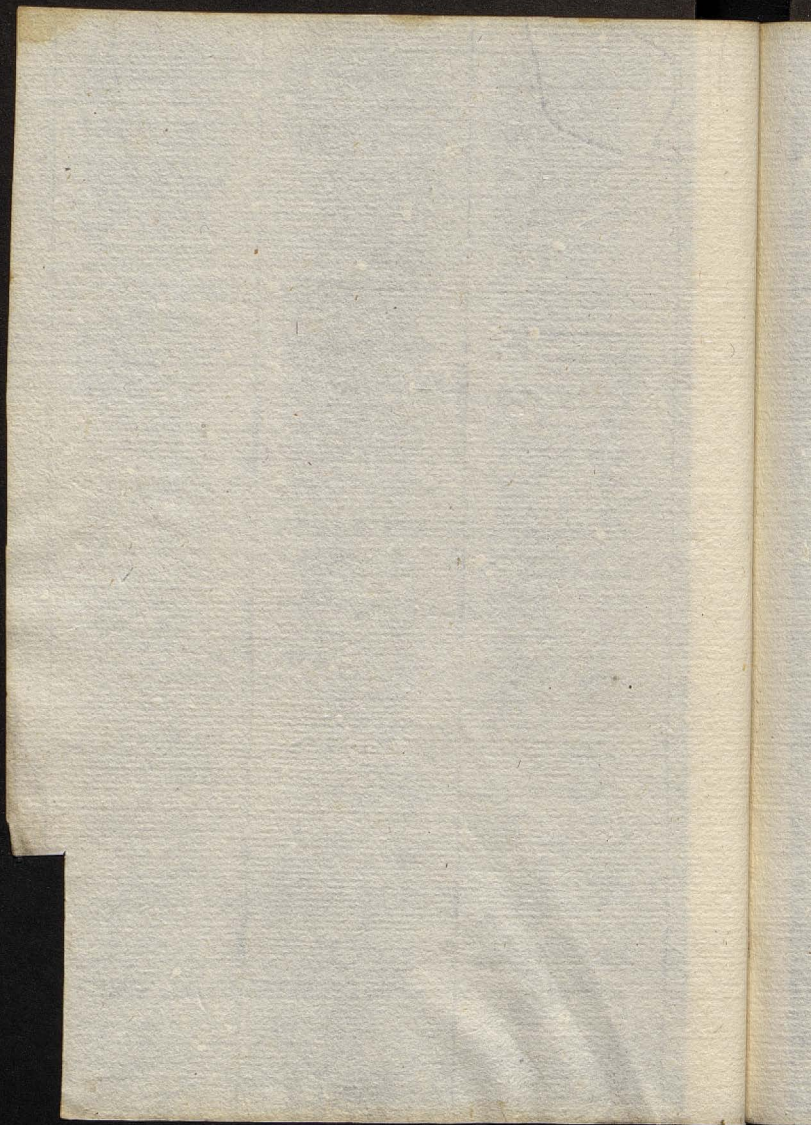


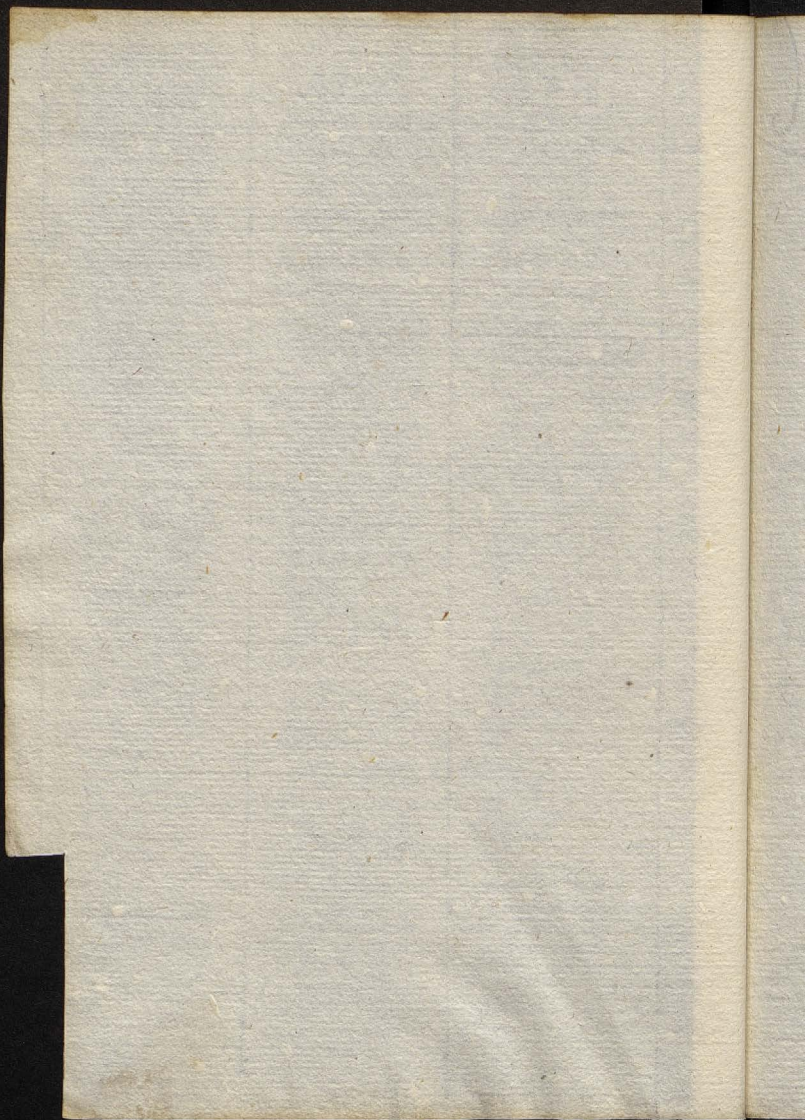
e











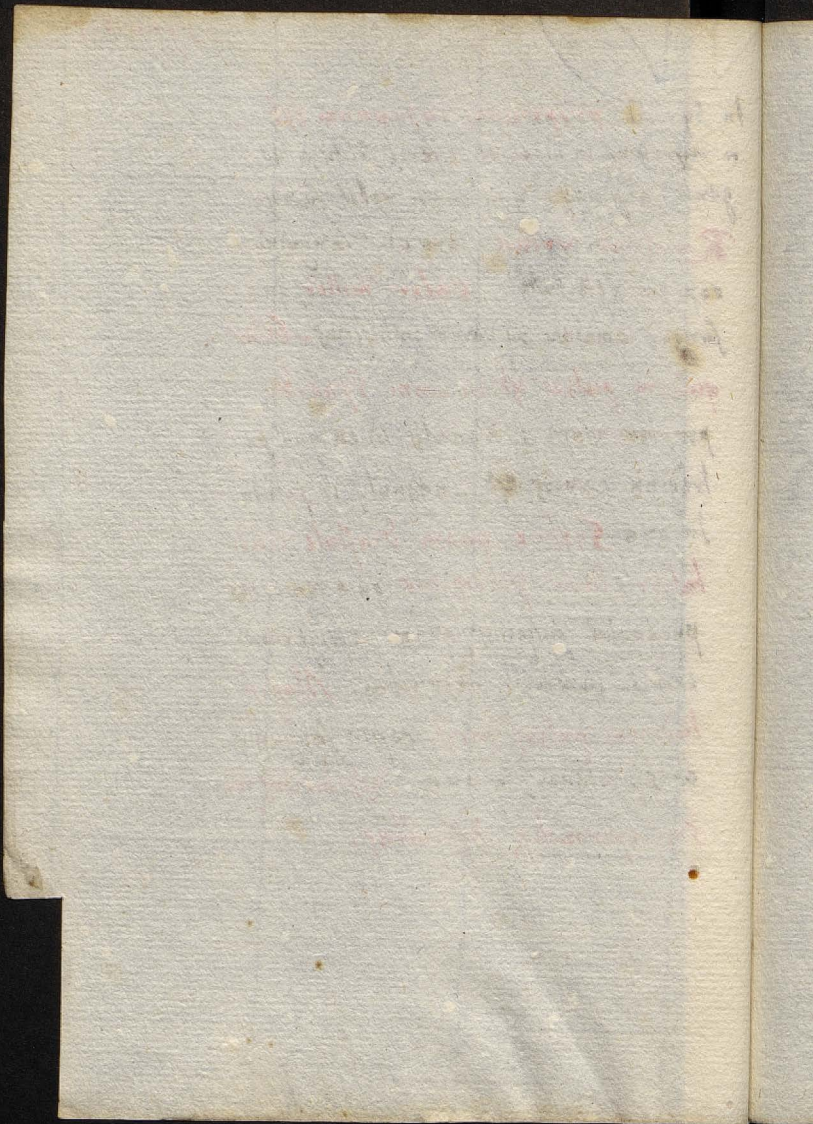
In
a
ga
T
o
fo
T
l
l
a
r
e

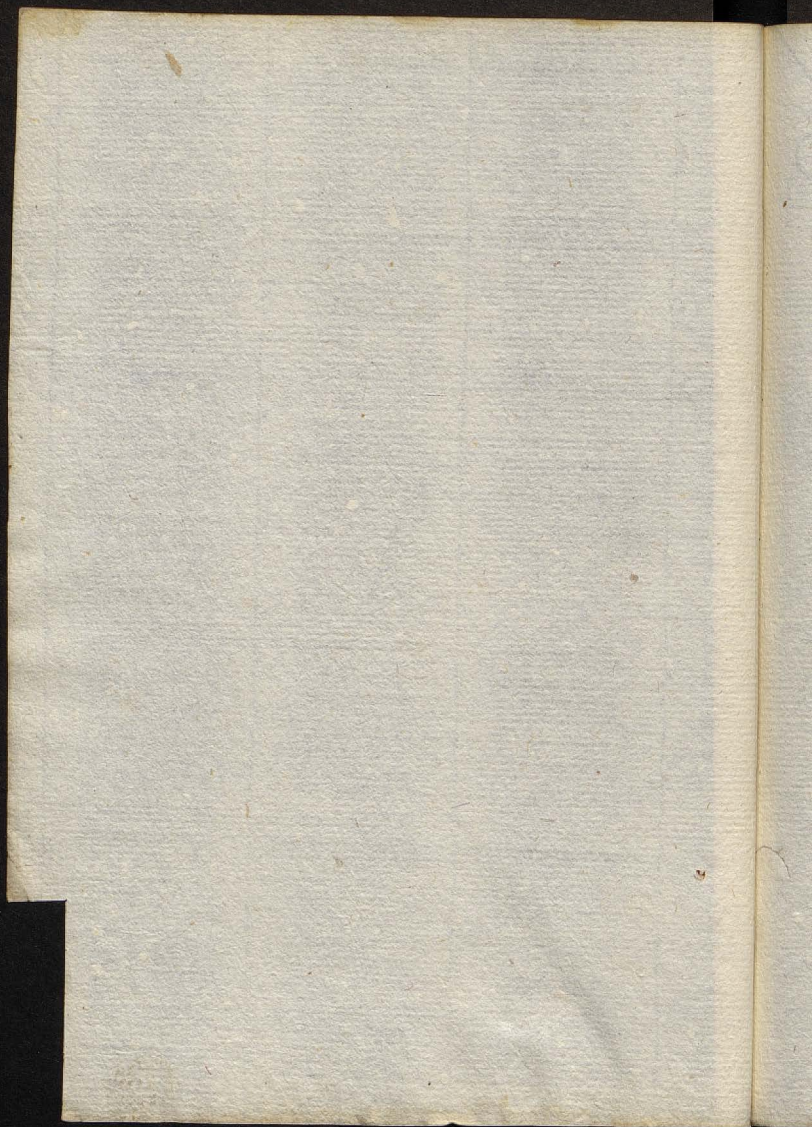
In Synocha propensitas in somnum est
a vaporibus in cerebrum efferri solitis a tur-
gante sanguine: qua causa rubet facies.

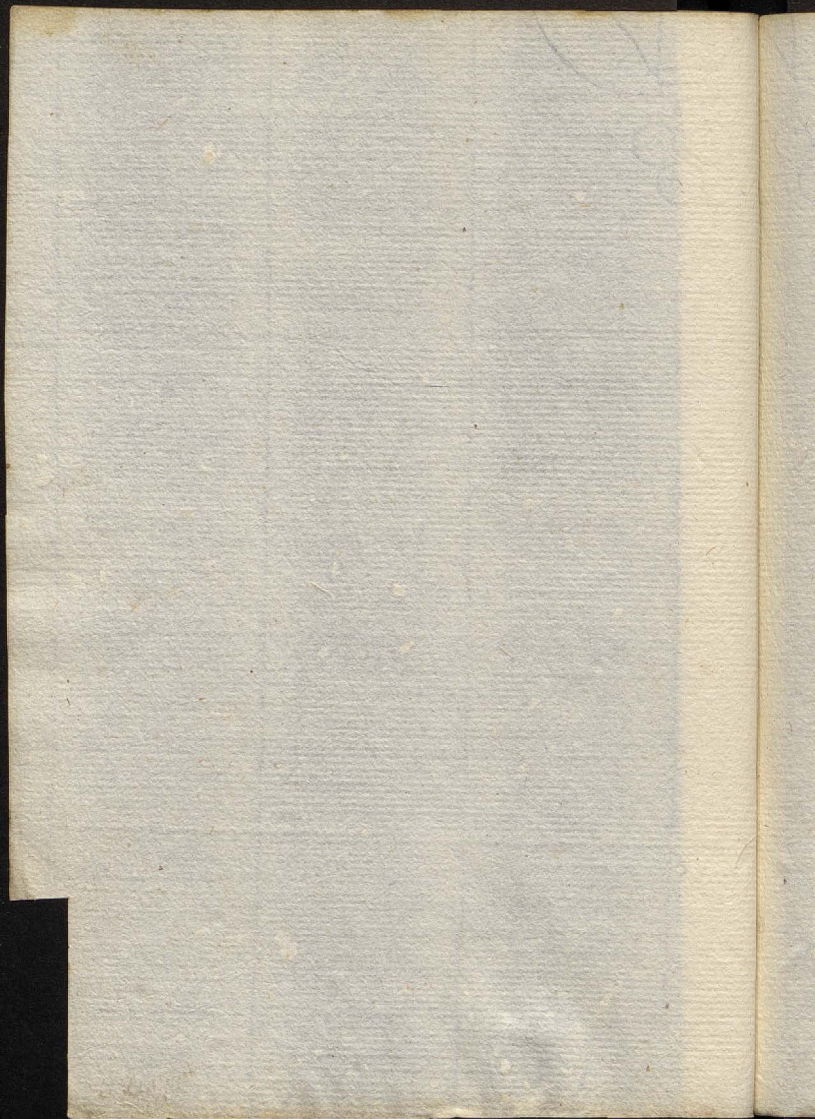
Rubet et urina sero eius sanguinis
copiam referente: calor mitior, quia
sanguis omnium humorum mitissimus. Calor

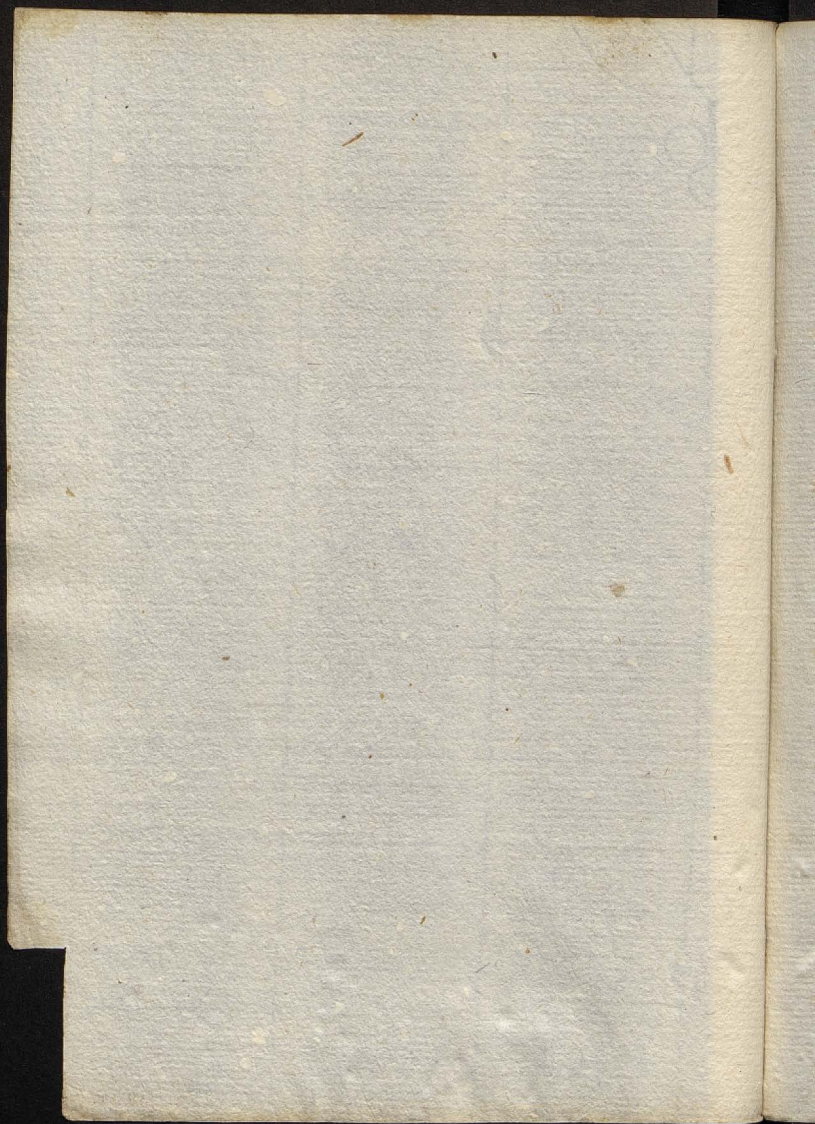
quidem pulsus est in omni Synocha
propter usum: aequalis in ea quod pu-
tredinis expers est, inaequalis in putrida.

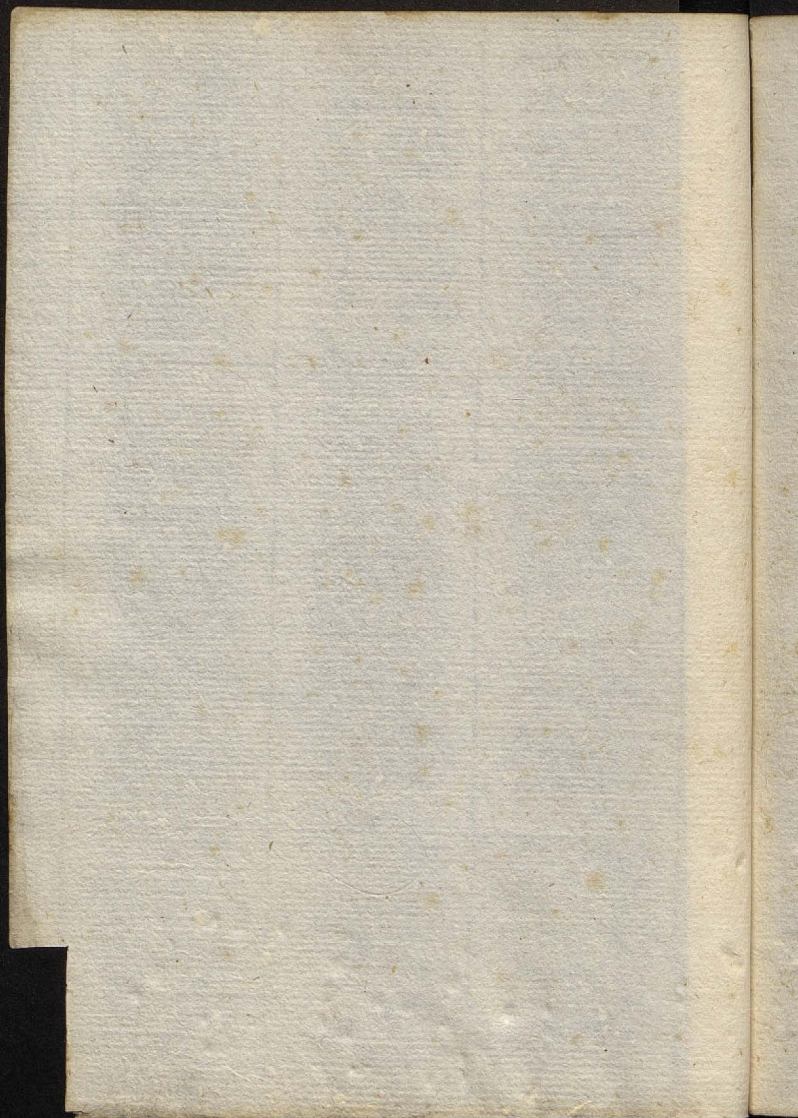
In qua **Systole** quam Diastole concii-
litor tactu percipitur quia maior ex
purganda fuliginis, quam refrigerandi
cordis incurrit necessitas. Magni-
tudinem pulsus facit copia sanguinis
et spirituum, a qua lassitudinis sen-
sus, spirandiq; difficultas.

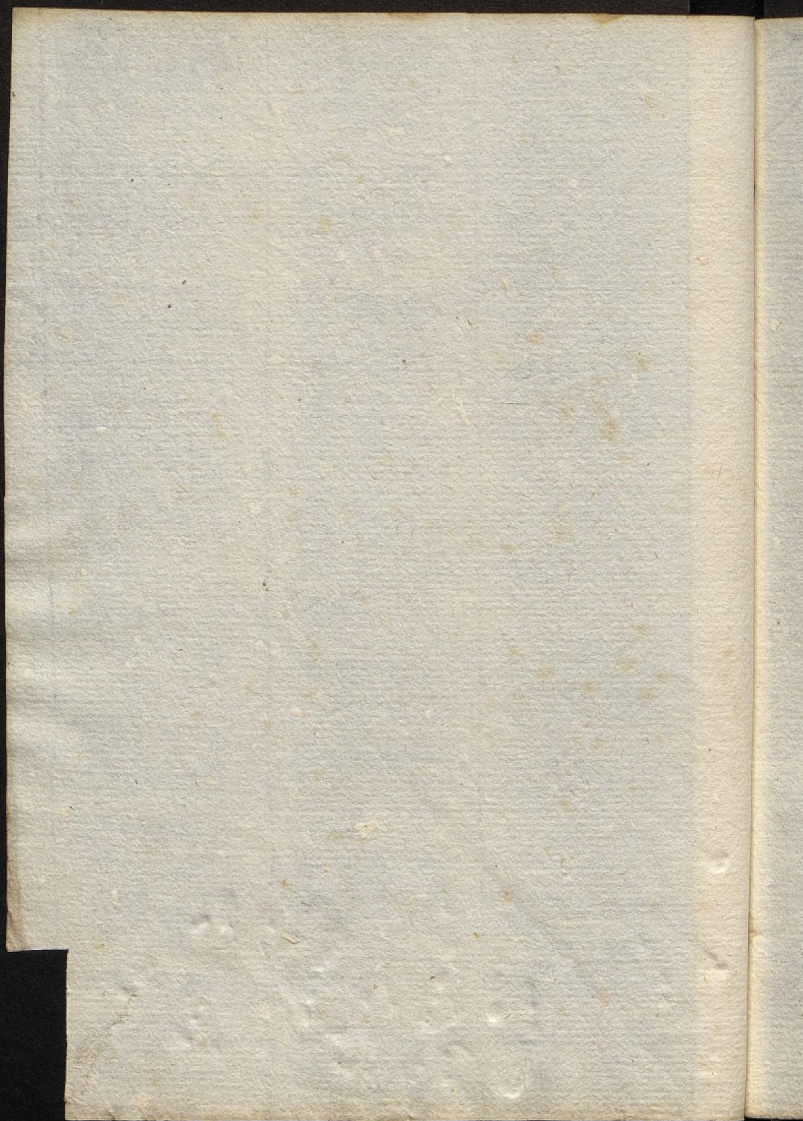




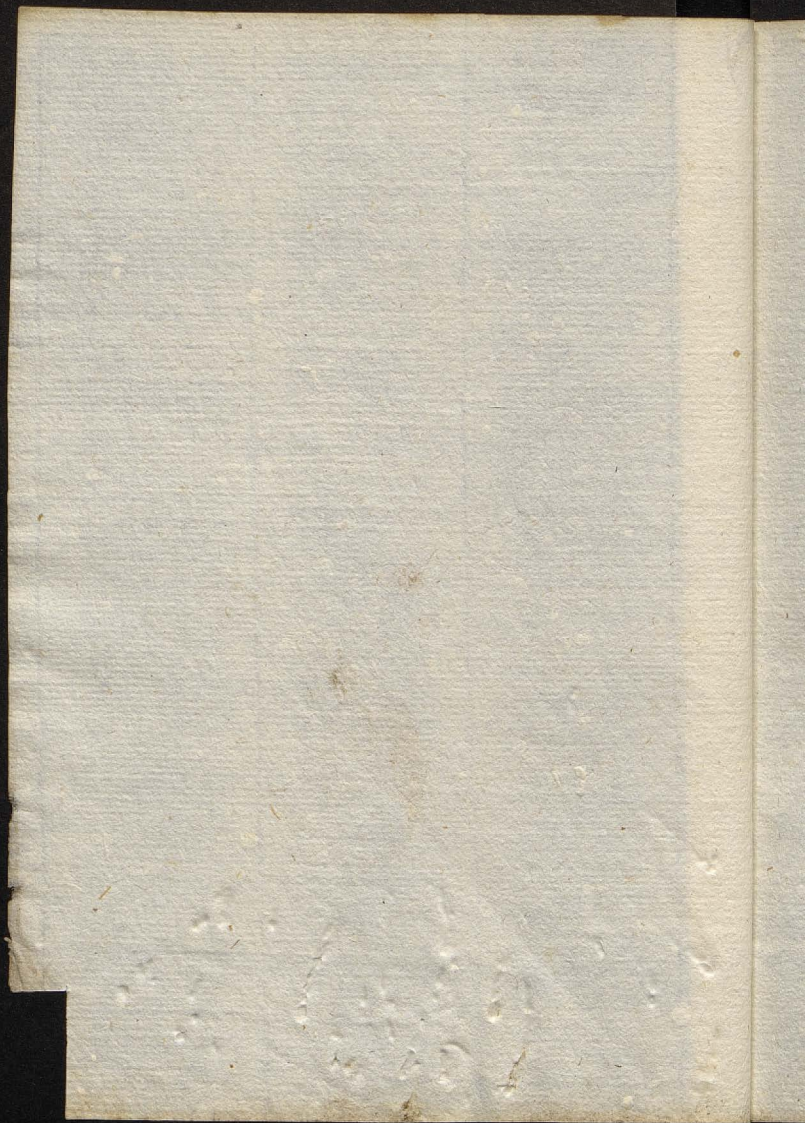


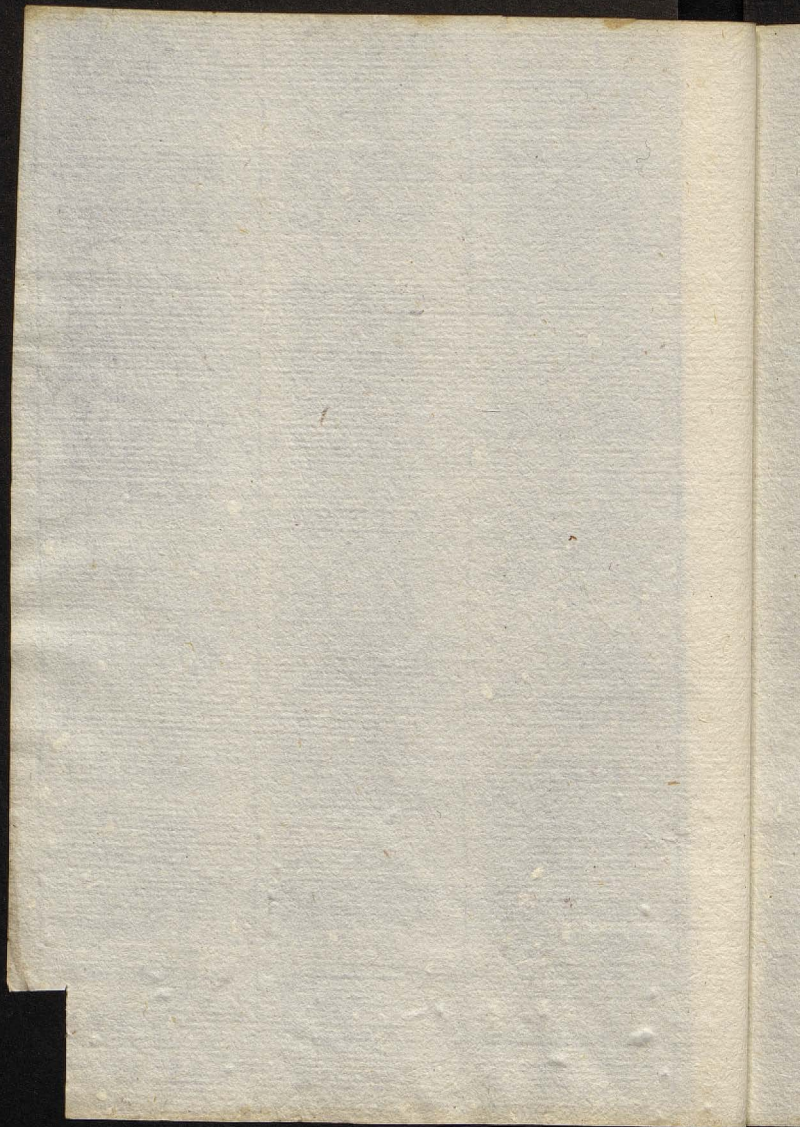


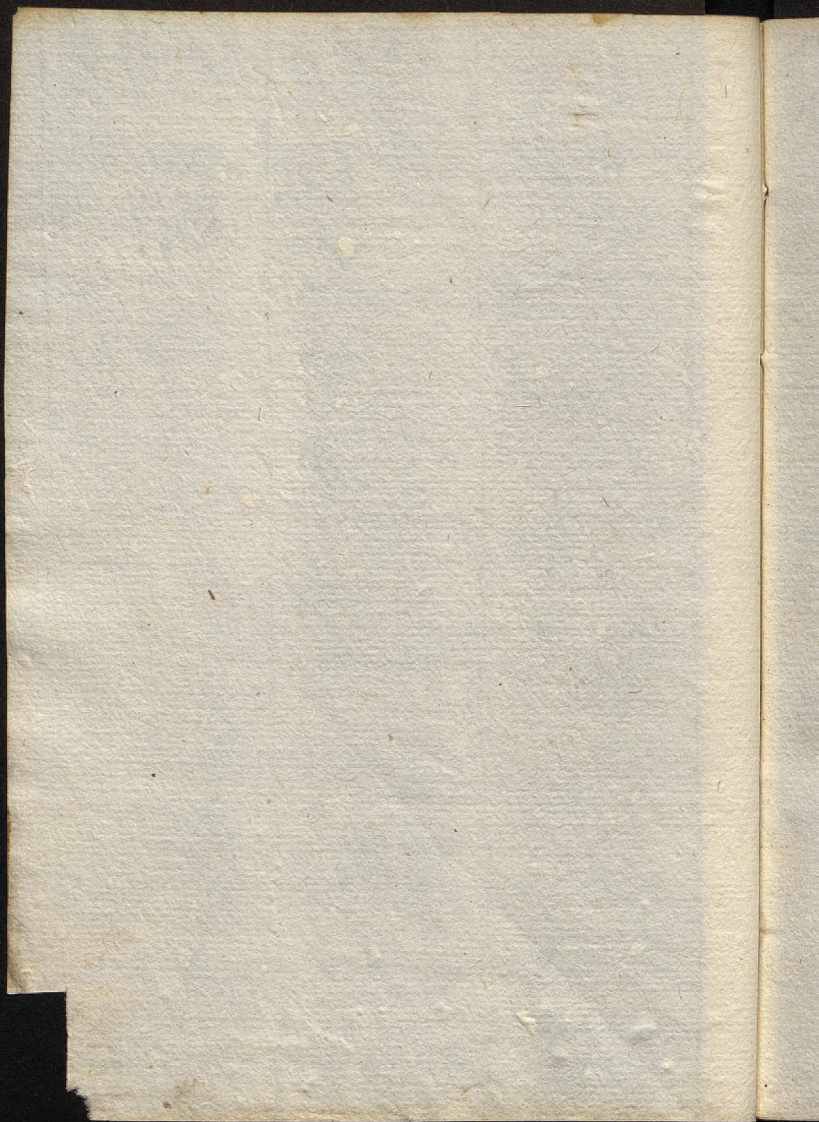




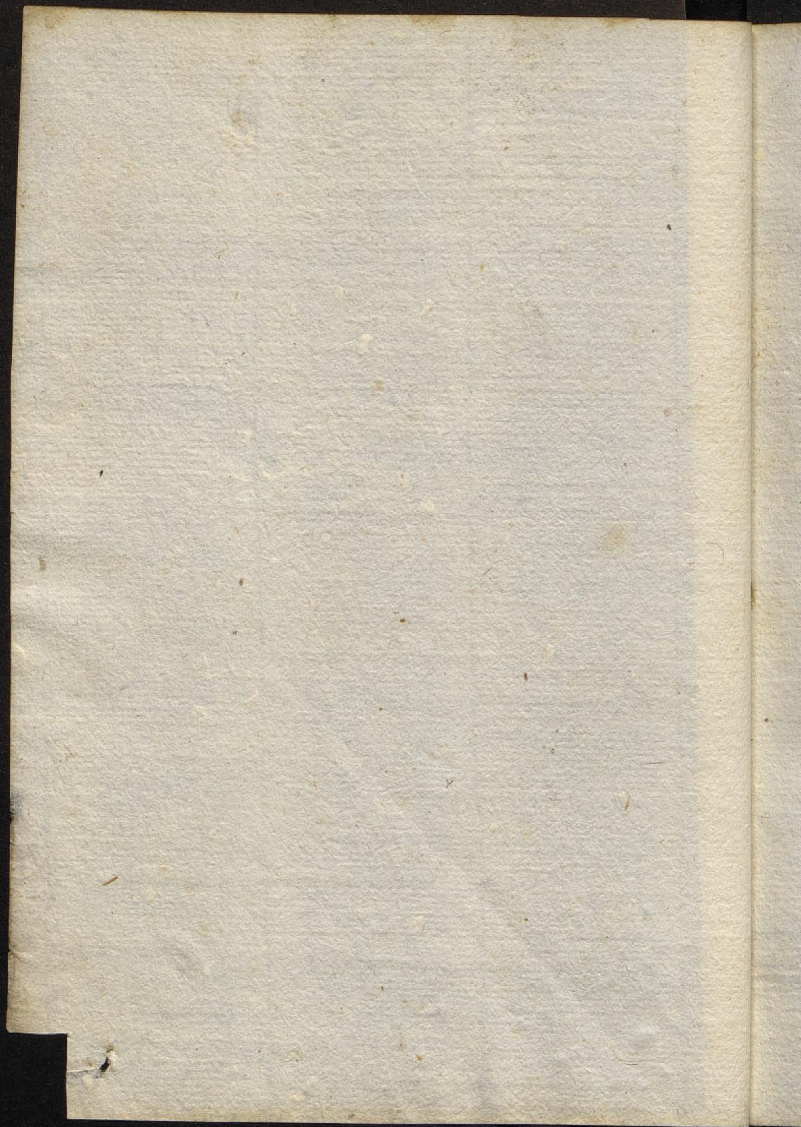
v

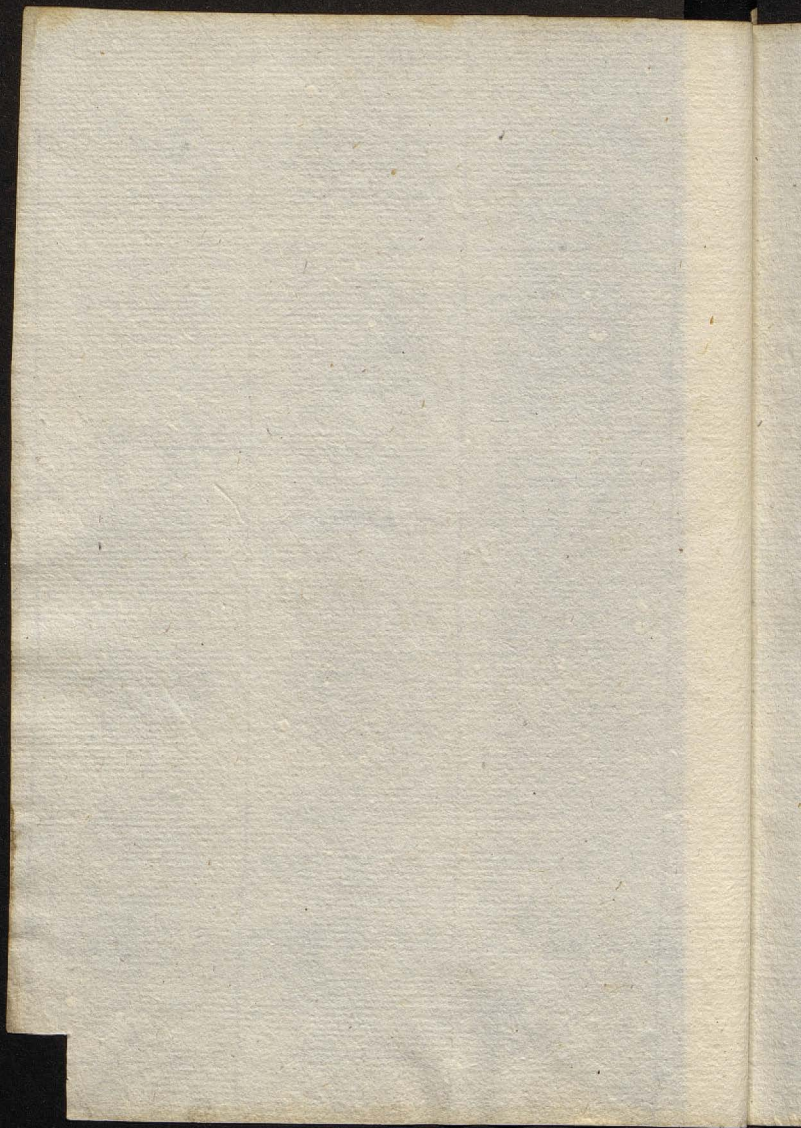


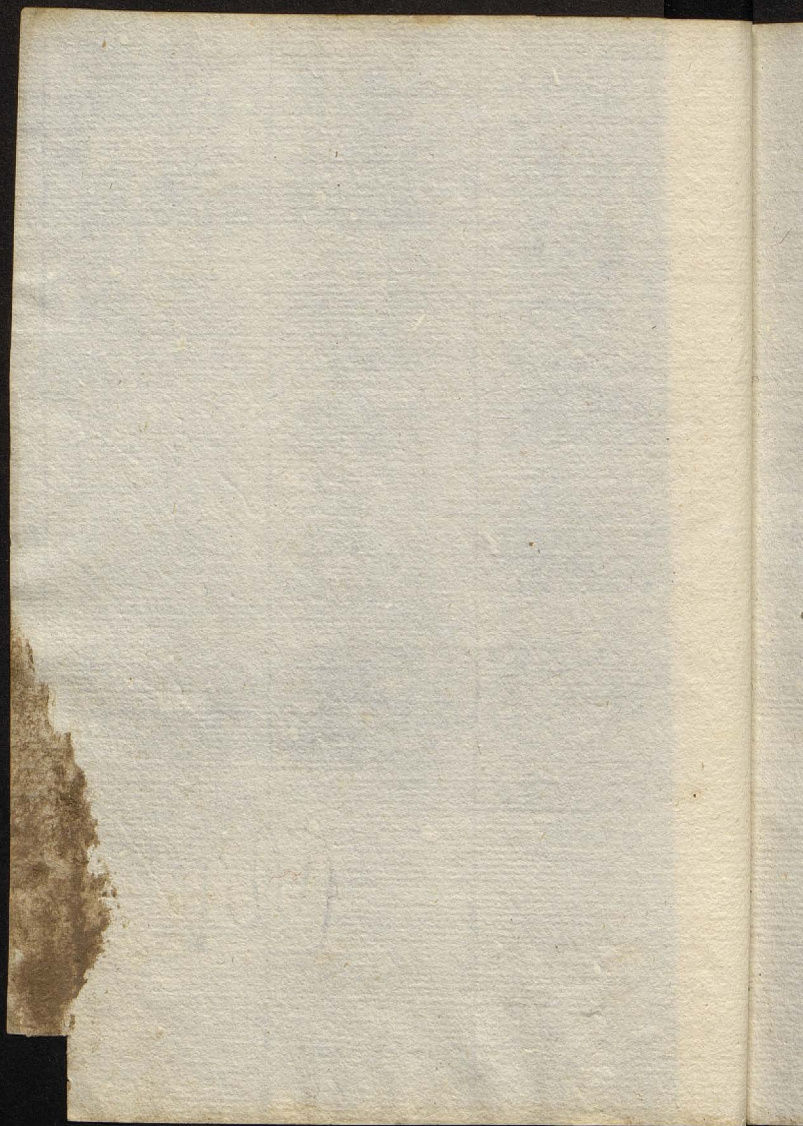


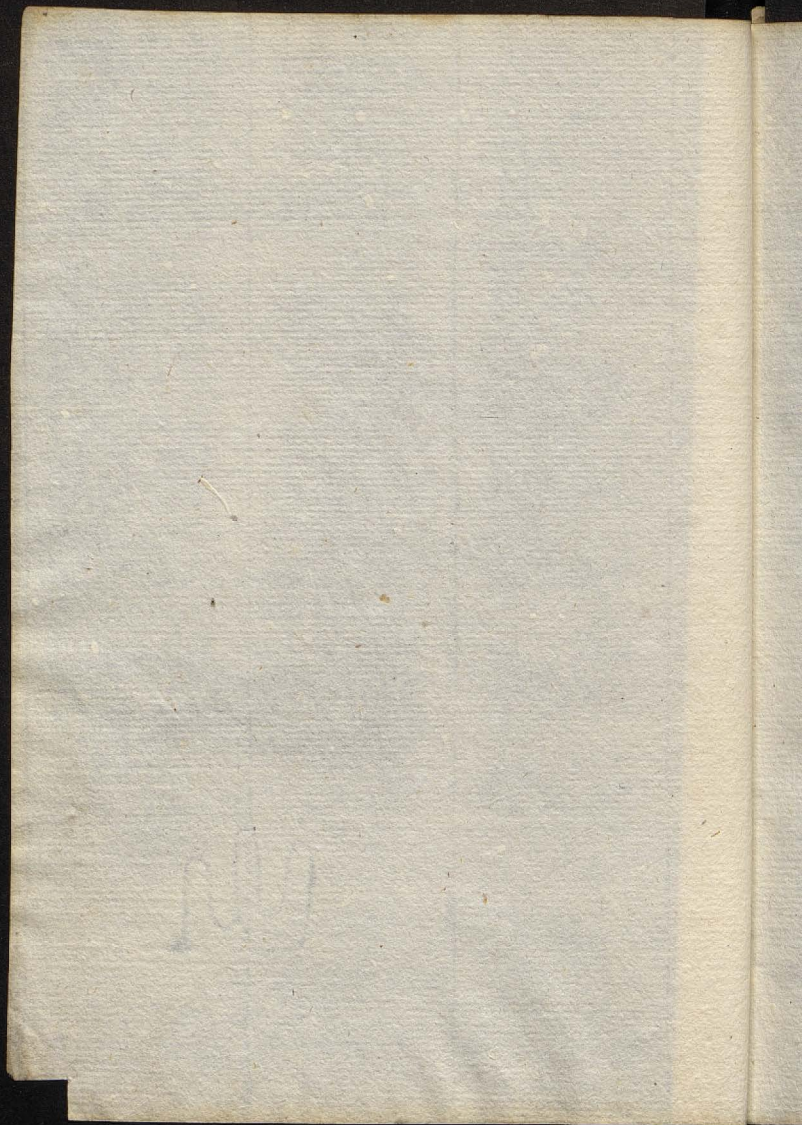


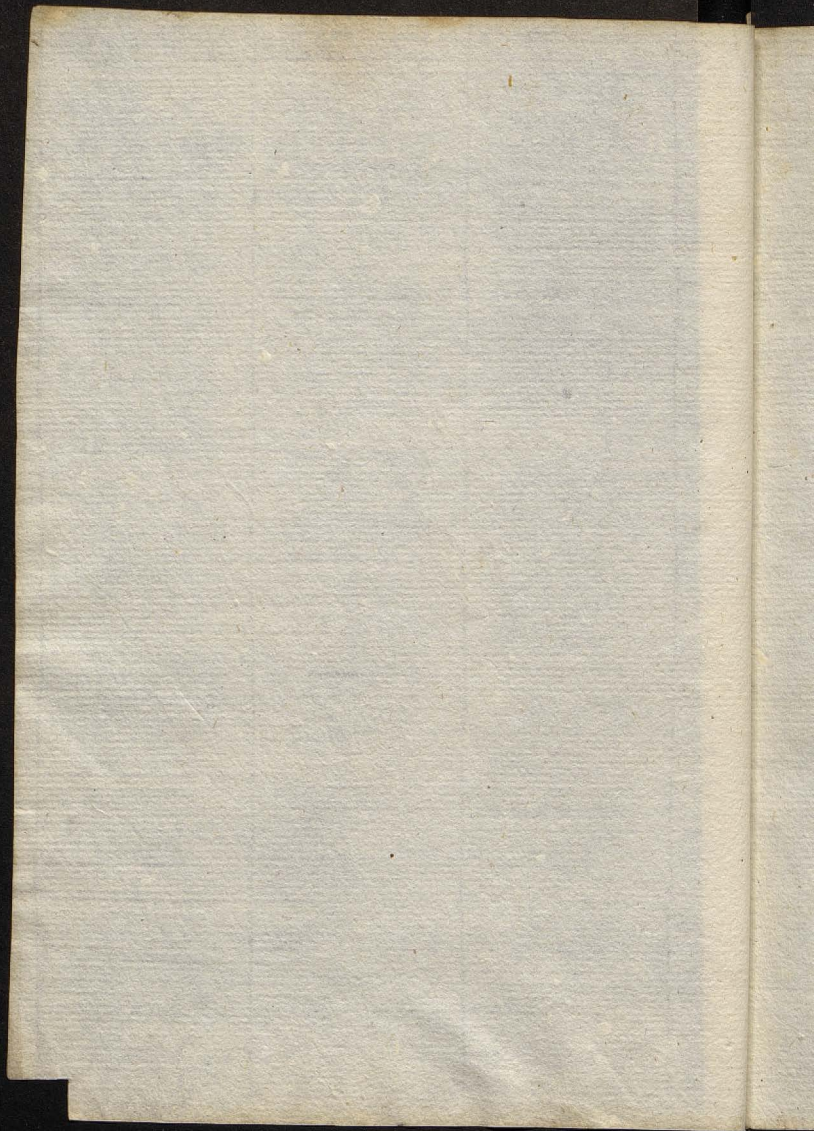
X

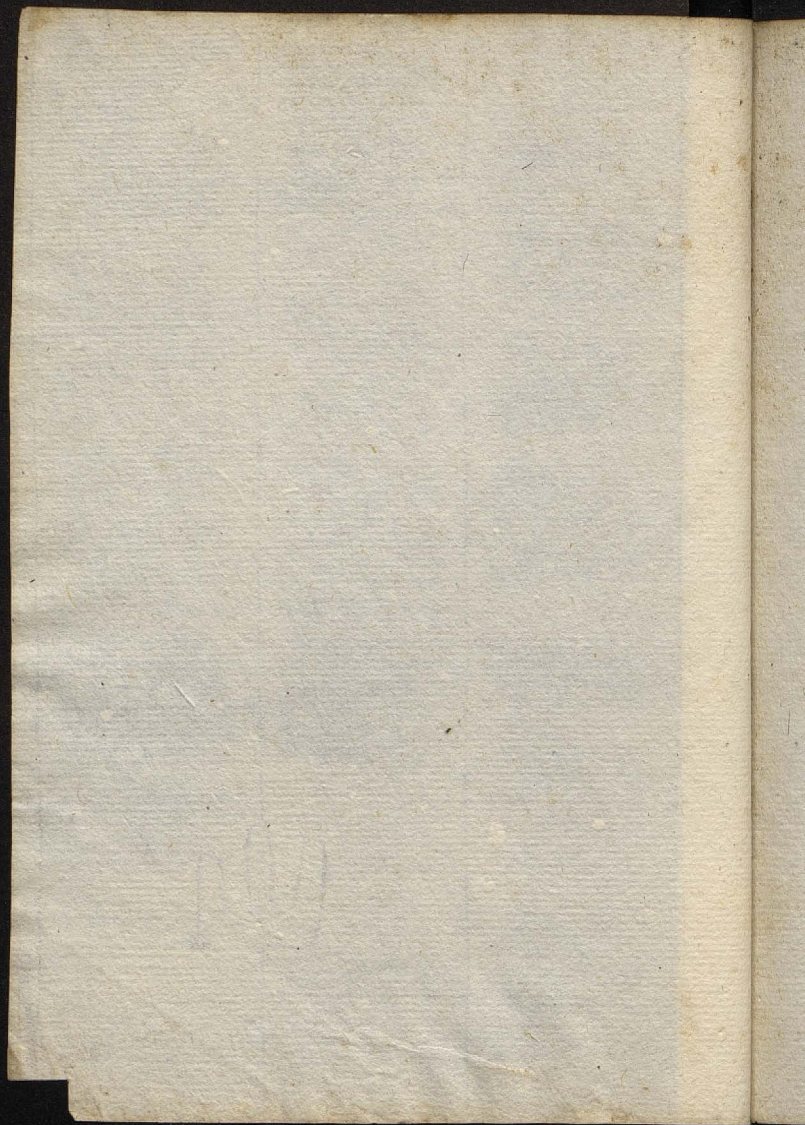


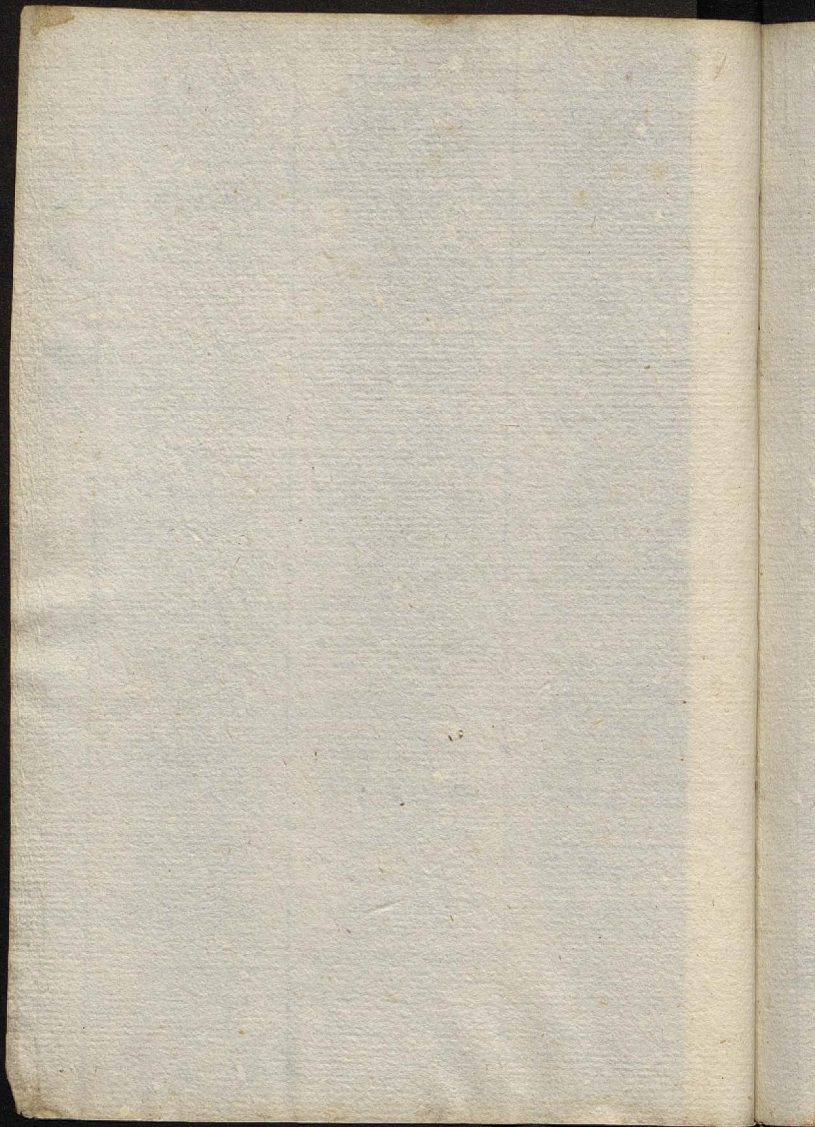


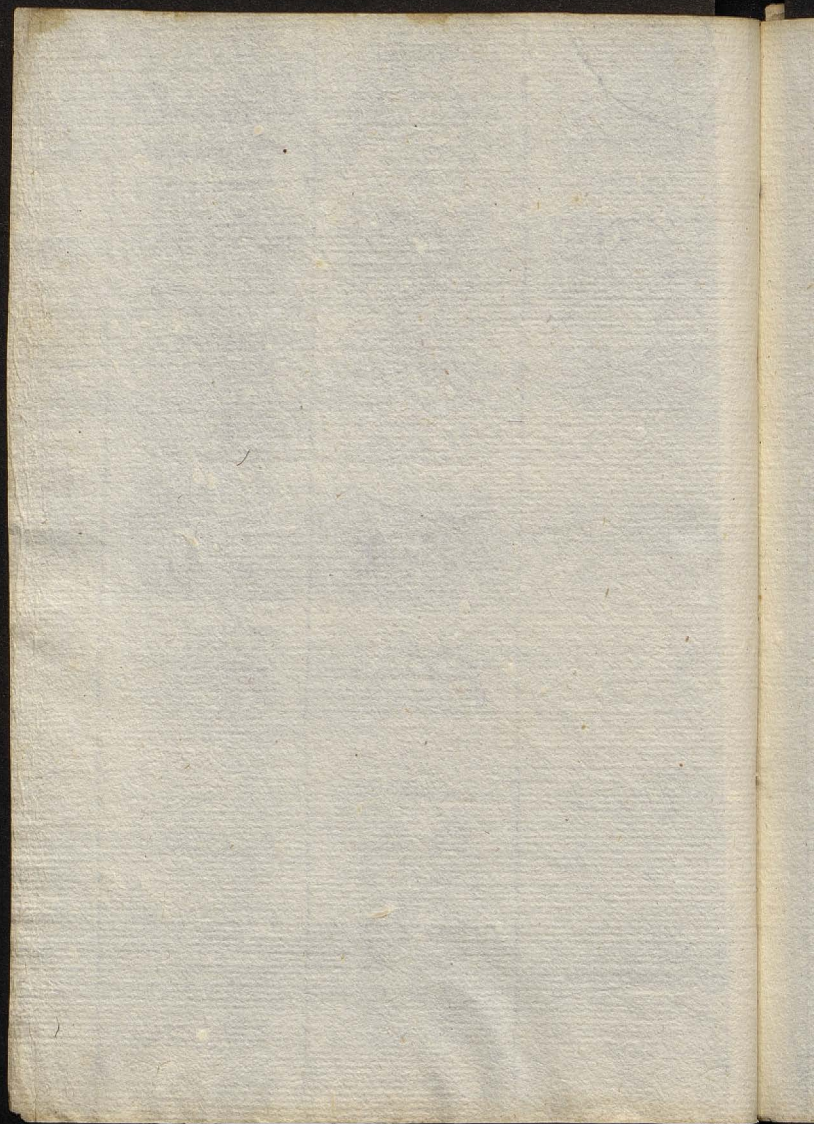


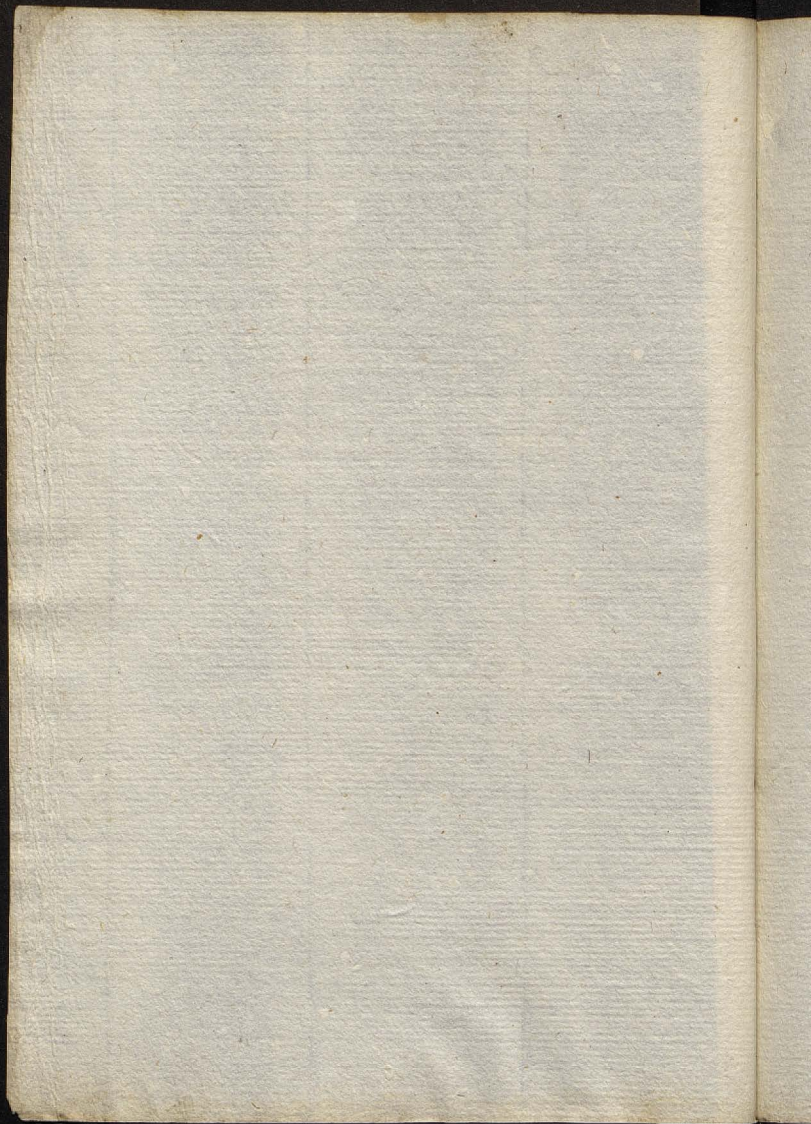


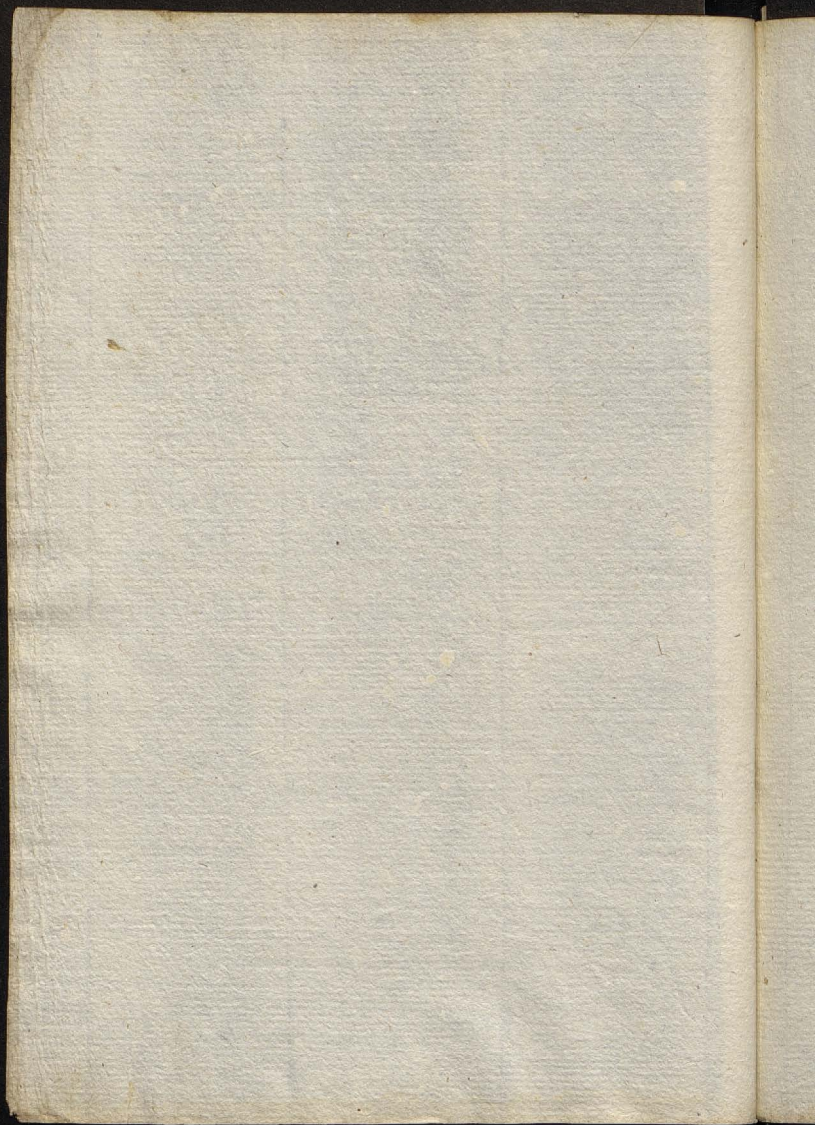


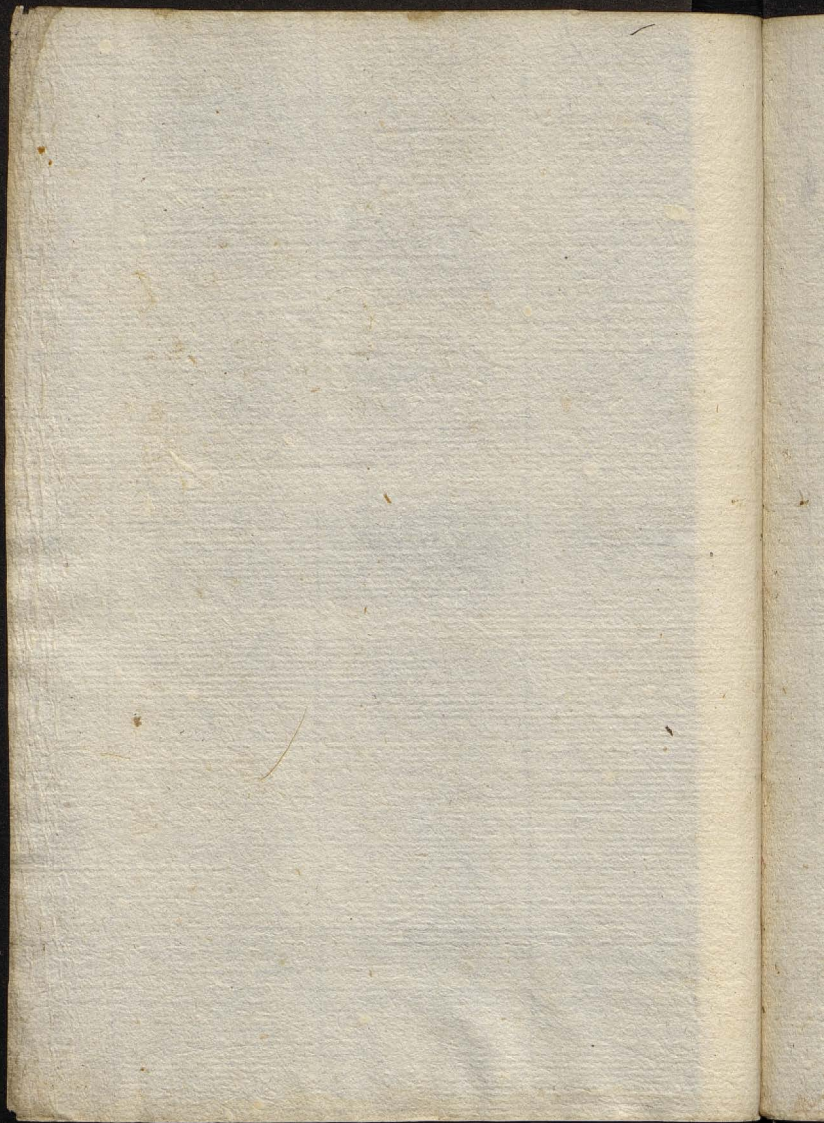


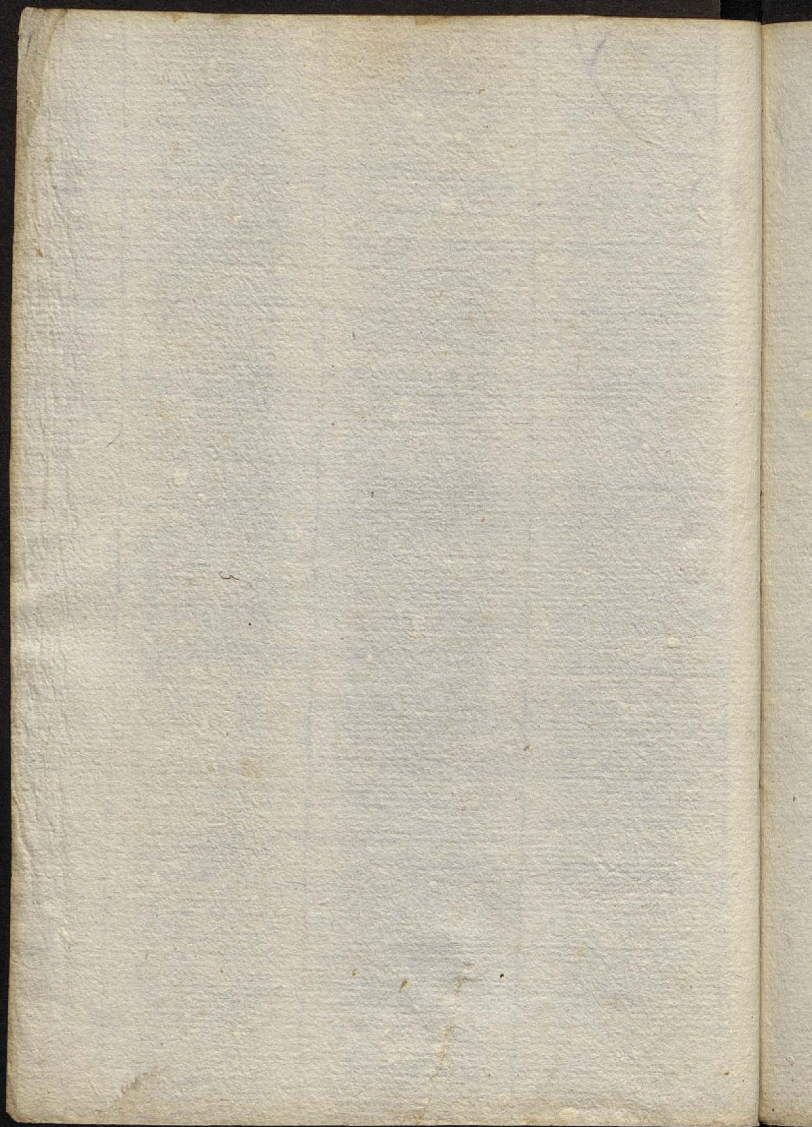


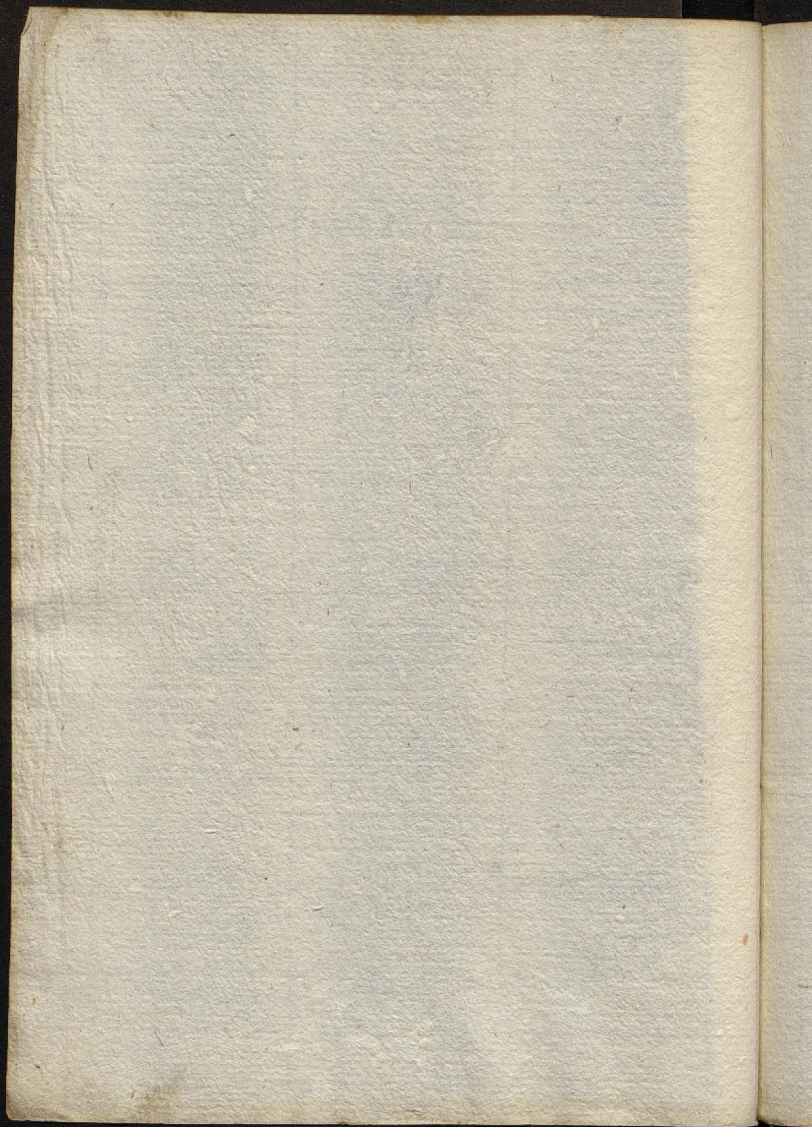


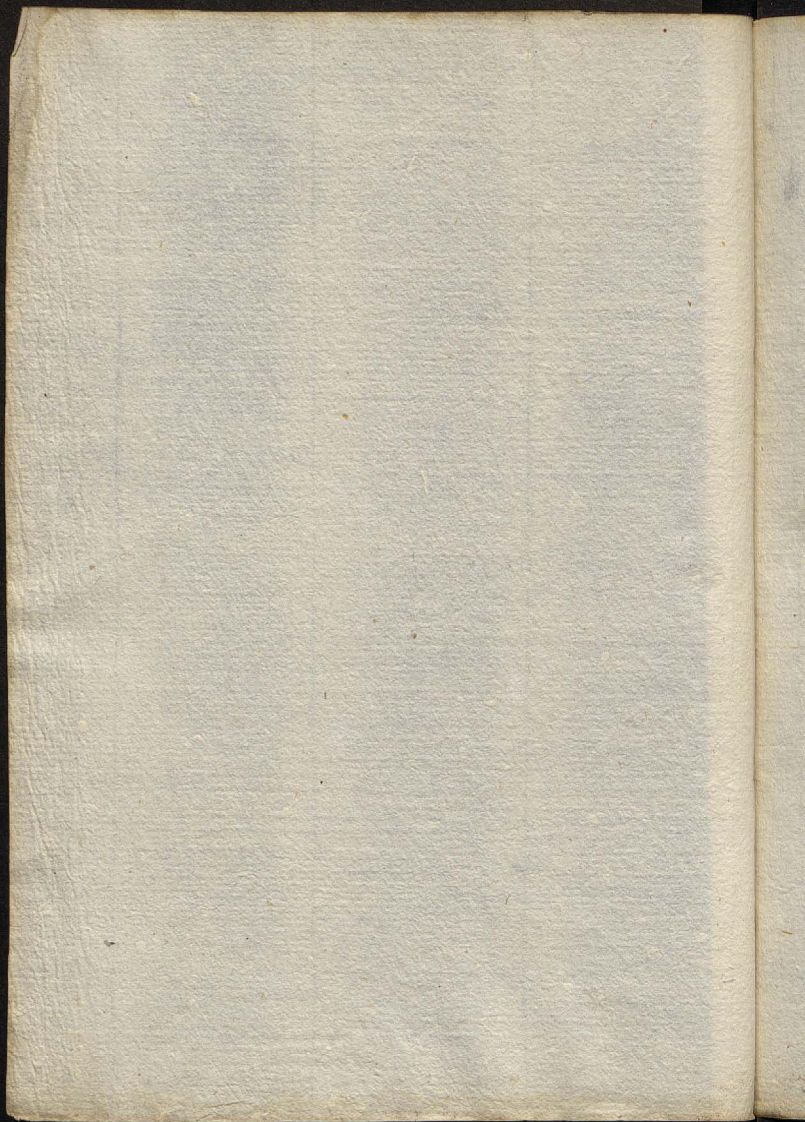


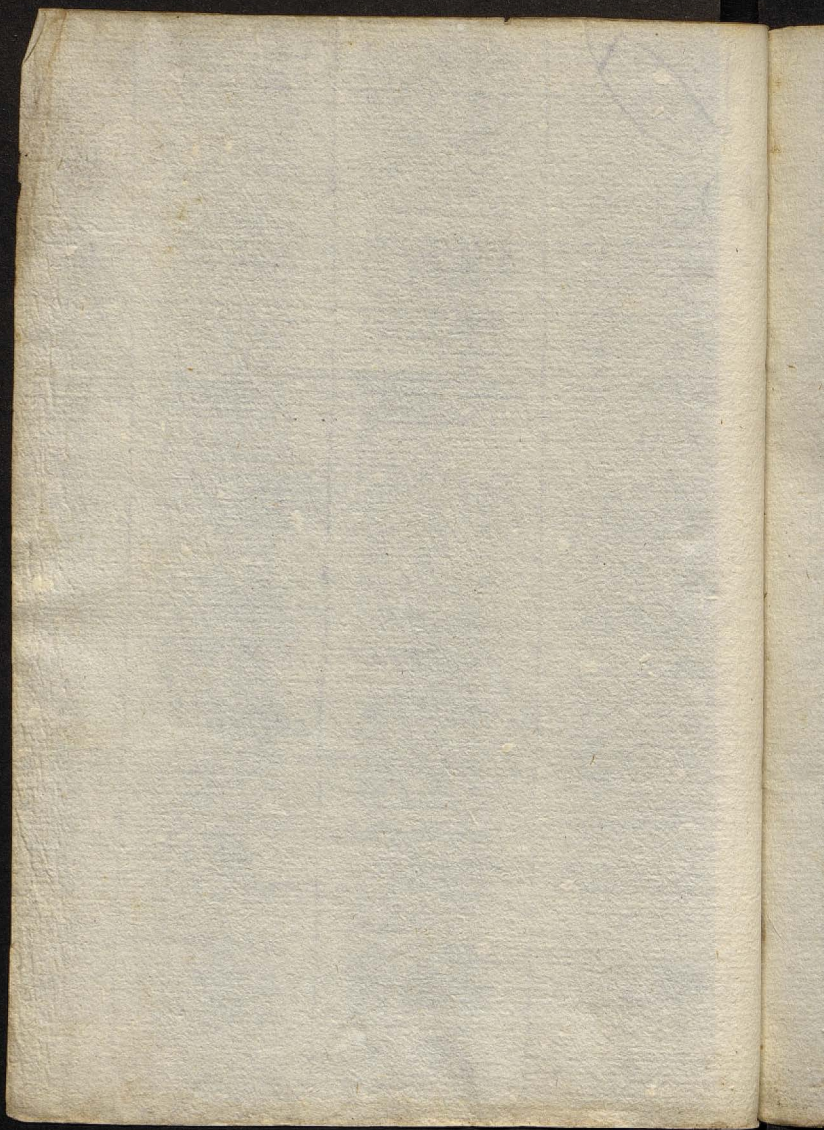


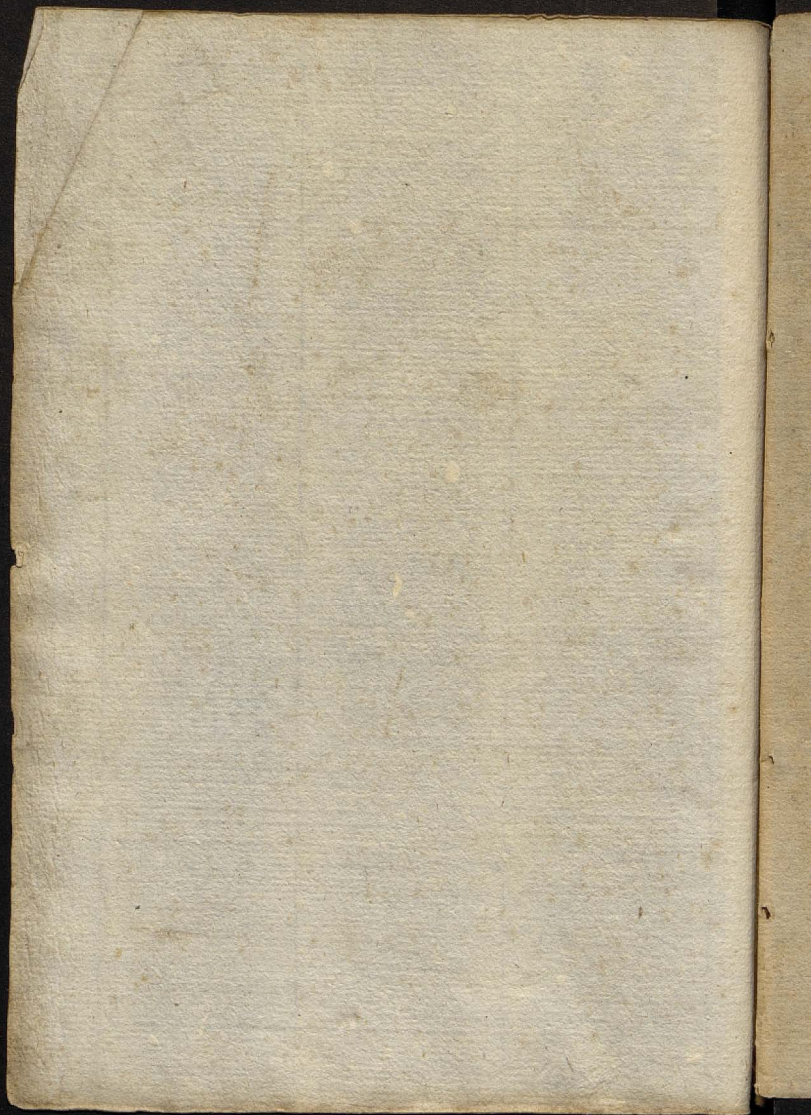












Pulsus in peste languidus

quia naturalis calor minimus, præter naturam plurimus a quo vitæ alteritur facultas. Etiam aura pestilens, et omne veneni genus, genuina sua proprietate Cor vitæ functionem ac domicilium primo potare solent, ac dein reliqua viscera, totumque corpus invadere. **Parvus et hinc pulsus** ab oppressione celer ac frequens ob usum: **inæqualis** cum a febre putrum a maligno vapore cor agitante. **Torvus aspectus** agitari succarum, notat animales spiritus unde **prevenitur: quod fit ut sitis et vomitus a bilis exuperantia**

Animi deliquium nascitur a
maligno vapore in Cordis ardem
elato: **frigus externum, in
ternusq; calor** est a viscerū
incendio. **Quiq; sopor** est
ut plurimum accidit conciden-
te robore facultatis animalis,
nisi multus dominetur humor
ab australi constitutione genitū.
Lethum est aliquando sano-
rum simile, sæpe turbidum
ut notat Hippocrates. Cum
in inguine tumor apparet,
Hepatis: cum **in axillis**
Cordis: quum **sub aure**
cerebri robur indicatur, si
febris nondum apparet, vel
mediocris est, et symptoma-
tum leuitas cum iuuē ro-
bore.

Cardiaca Febris dicitur
in qua cor praesertim affli-
gitur. Sive per Cor viscus
illud perpetuo pulsans, quod
est vitale principium, intelli-
gamus: sive os ventriculi, quo
qui dolent, **cardiacæ**
cordis dolore affici persiben-
tur. Syncopatis etiam febris
appellatur, quia frequentes indu-
cit syncopas. Tum **cor palpi-**
tat ab inflammationis magni-
tudine. **Ad ventriculum**
est calorem est, a bile flava
vel prasina ibi urgente vel
maligna illic insistente quali-
tate. **Cardiognus**, Cordis seu
potius ventriculi visio seu
morsus ab iisdem excitatur
causis **Respiratio frequens**
et parva ab opprobria.

facies rubor a vaporum
ascensu quos excitat insignis
plegmona: cuius signum est
ingens in regione cordis do-
lor. **Culis mador** est non
sudor, qui crithous id est non
est, et symptomatous, nempe
Diaphoretous et Syncrophous.

