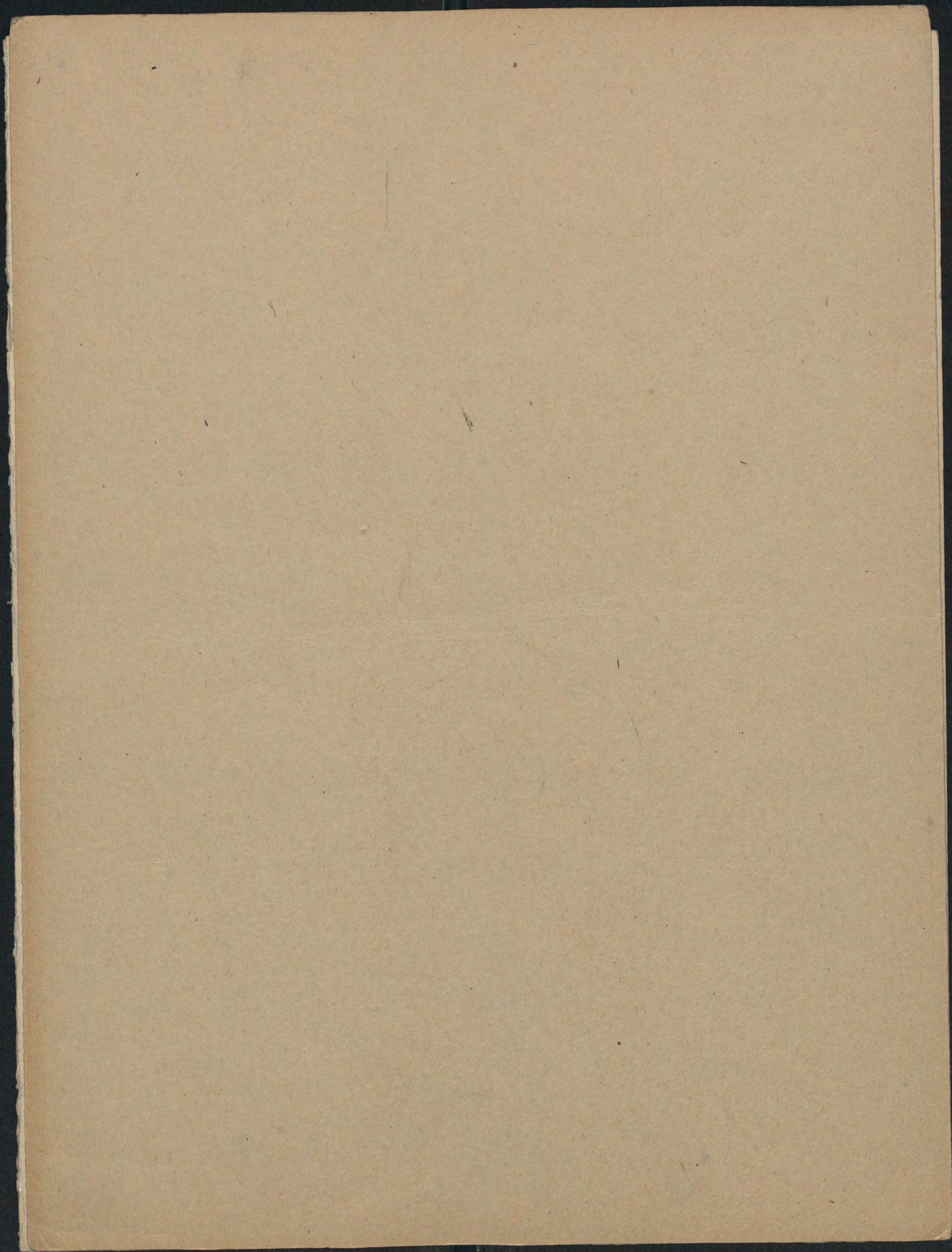


CIMELIA

F Vol. 16



CIMELIA

Vol. 16

Michael Vukobratovic. Epigramm pro anno 1832.

1/2

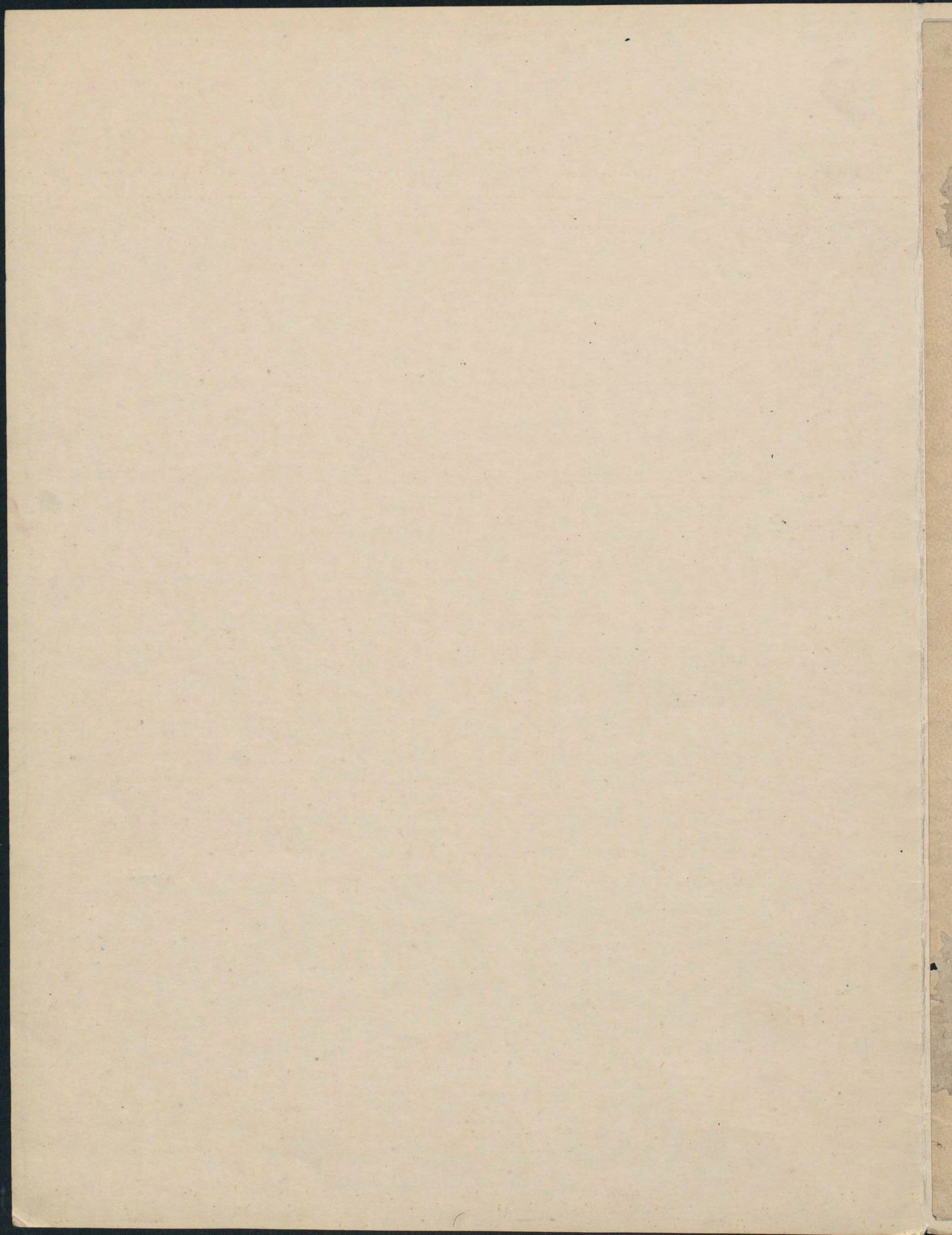
Ag 2 luntij

25



300  
C-1042  
Cim. 1154

Cim. Vol. 16





**Signa in Aries.**

Et festinaria incipit: prin-  
cipibus loquere: vales: bal-  
ta: caput non radas: me-  
dicinas capitis ne admo-  
ueas.



**Phemeris cum electionibus pro anno dñi 1532 qui**  
**Est bissextilis et embelimalis per Magistrū Michaelē Viliiciē. in celebra studio Cracouensi.**

duigentur confecta. Cuius quidem anni, Aureus numerus est 13. Cuius Sclatis 13. Antere dominicales 5. Interual-  
lū, 6. h. domade. Concurrētes, 6. dies. Festa mob. lia in suis locis patebunt.

**Characterum**

Coniunctio Solis & Lune.  
Prima designat quadrā.  
Oppositio Solis & Lune.  
Al. unam vno at quadrā.  
Mutatio opumam.

**interpretatio**

Mutatio medietatem.  
Balnei boni cu venetis.  
Balnei si ne venetis.  
Seminatio & plantatio.  
Puerorū blactatio.



Loratio per electuarū.  
Loratio per baulū.  
Purgatio per pillulas.  
Aries. V. Leo. S. Sagitta.  
Virgo. S. Capricor.  
Gemini. S. Libra. S. Aquari.  
Cancer. S. Scorpium. Pisces. X



Horas 26. unctio 7. 2. pro-  
ficio: ac quadraturā Lūmi-  
narū. ab occasu Solis (more vul-  
gi) incipit: atq; terminat ad oc-  
casum Solis sicut horologū in  
regum. Et id quidē primū 7. cō-  
digne p meridiano a leberime  
ciuitatē L. r. couici. Dein. p aliā  
incolis incti Regni Polonie.

**Signa in Tauro.**

hilia incipit edifi-  
cari: an-  
quere: arborē  
planta: vā vas colē: femi-  
na: sauro. Jouca.



**Januarius habet dies 31.**

Table of the month of January with columns for day, feast name, and astrological symbols.

**Februarius habet dies 29.**

Table of the month of February with columns for day, feast name, and astrological symbols.

**September habet dies 30.**

Table of the month of September with columns for day, feast name, and astrological symbols.

**Luna in Geminis.**

Dominae anca incipit  
ad litteras discen-  
applica.



**Signa in Leone.**

hilia incipit: meli-  
cūta: refugae: vestimenta  
nova non induas.



**Luna in Virgine.**

Cū nos lit. ris er. de:  
amores puellarum quere:  
vgo. em ne dcaas.



**Luna in Libra.**

Ladaua incipit: et spiri-  
tibus loquere: em: pen-  
iter aggredere.



**Junius habet dies 30.**

Table of the month of June with columns for day, feast name, and astrological symbols.

**October habet dies 31.**

Table of the month of October with columns for day, feast name, and astrological symbols.

