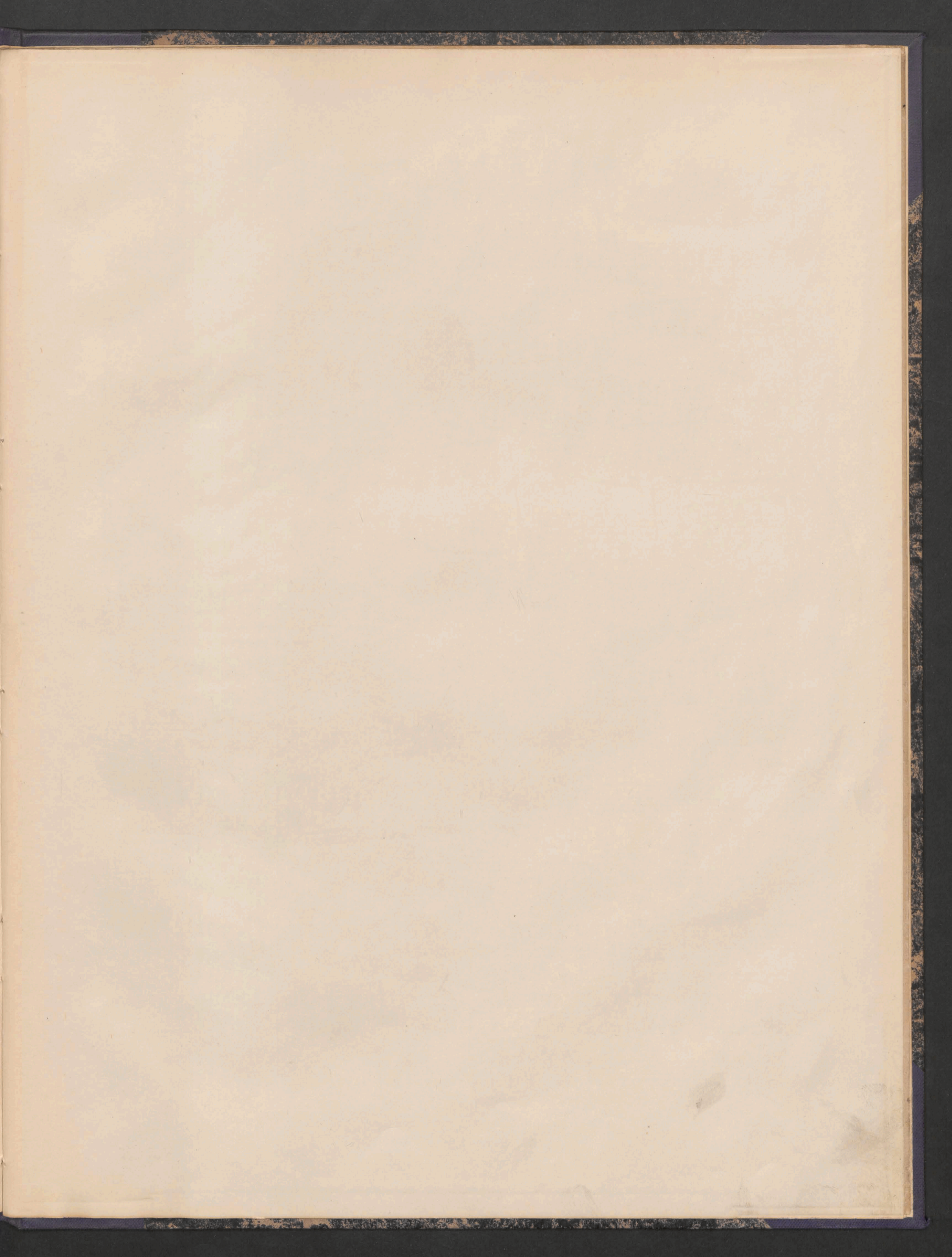




Muz.-Rkp. 265 IV

BIBLIOTHEC
UNIV. JAGELL.
CRACOVENSIS





Un morceau symphonique

J. Lad. J. Kozeluh

The first system of handwritten musical notation consists of two staves. The top staff is in treble clef and the bottom in bass clef. The key signature has one sharp (F#) and the time signature is 3/4. The music begins with a piano (*p*) dynamic marking. The notation includes various note values, rests, and accidentals.

The second system continues the musical piece. It features a melodic line in the upper voice with a slur and a 'sa' marking above it. The lower voice provides harmonic support. A 'loco' marking is present above the staff.

The third system shows further development of the musical themes. A 'loco' marking is visible above the staff, indicating a change in articulation or phrasing.

The fourth system introduces a change in tempo, marked 'meno tempo'. The music features a prominent melodic line in the upper voice with a slur and a '12' marking above it.

The fifth system continues with complex rhythmic patterns and melodic lines. It includes markings for '12' and '8' above the staff, possibly indicating fingerings or specific rhythmic values.

The sixth system features a 'loco' marking above the staff and a piano-piano (*pp*) dynamic marking. The music is characterized by dense chordal textures and melodic fragments.

The seventh system concludes the piece with a melodic line in the upper voice marked with a '6' and a 'sa' marking. The lower voice continues with harmonic accompaniment.

Muz. Rkp. 265 IV

Handwritten musical score, first system. Treble and bass staves. The music features sixteenth-note runs with slurs and a '6' marking. A 'loco' marking is present above the treble staff.

Handwritten musical score, second system. Treble and bass staves. The music continues with sixteenth-note runs and slurs.

Handwritten musical score, third system. Treble and bass staves. The music continues with sixteenth-note runs and slurs.

Handwritten musical score, fourth system. Treble and bass staves. The music continues with sixteenth-note runs and slurs. A 'loco' marking is present above the treble staff.

Handwritten musical score, fifth system. Treble and bass staves. The music continues with sixteenth-note runs and slurs. A 'loco' marking is present above the treble staff. A 'Tempo' marking is present above the treble staff.

Handwritten musical score, sixth system. Treble and bass staves. The music continues with sixteenth-note runs and slurs. A 'loco' marking is present above the treble staff.

Handwritten musical score, seventh system. Treble and bass staves. The music continues with sixteenth-note runs and slurs. A 'loco' marking is present above the treble staff.

Handwritten musical notation, first system. Treble and bass clefs. Includes notes, rests, and dynamic markings like *sa* and *loco*. A triplet of eighth notes is visible in the treble staff.

Handwritten musical notation, second system. Treble and bass clefs. Includes notes, rests, and dynamic markings like *sa* and *loco*. A *pp.* marking is present in the bass staff.

Handwritten musical notation, third system. Treble and bass clefs. Includes notes, rests, and dynamic markings like *loco* and *sa*. Some notes in the treble staff are marked with an 'X'.

Handwritten musical notation, fourth system. Treble and bass clefs. Includes notes, rests, and dynamic markings like *loco* and *sa*.

Handwritten musical notation, fifth system. Treble and bass clefs. Includes notes, rests, and dynamic markings like *loco* and *sa*. Some notes in the treble staff are marked with an 'X'.

Handwritten musical notation, sixth system. Treble and bass clefs. Includes notes, rests, and dynamic markings like *loco* and *sa*. A sixteenth note figure is visible in the bass staff.

Handwritten musical notation, seventh system. Treble and bass clefs. Includes notes, rests, and dynamic markings like *loco* and *sa*. A sixteenth note figure is visible in the bass staff.

Handwritten musical score, first system. Treble and bass clefs. Includes a sixteenth-note scale in the treble and a bass line with sixteenth-note accompaniment. A *rit.* marking is present above the treble staff.

Handwritten musical score, second system. Treble and bass clefs. Treble staff contains a series of chords with a *rit.* marking above. Bass staff contains a melodic line with eighth notes.

Handwritten musical score, third system. Treble and bass clefs. Treble staff contains a series of chords with a *rit.* marking above. Bass staff contains a melodic line with eighth notes.

Handwritten musical score, fourth system. Treble and bass clefs. Treble staff contains a melodic line with triplets and a *rit.* marking above. Bass staff contains a melodic line with triplets.

Handwritten musical score, fifth system. Treble and bass clefs. Treble staff contains a melodic line with eighth notes. Bass staff contains a melodic line with eighth notes.

Handwritten musical score, sixth system. Treble and bass clefs. Treble staff contains a melodic line with eighth notes and a *rit.* marking above. Bass staff contains a melodic line with eighth notes.

Handwritten musical score, seventh system. Treble and bass clefs. Treble staff contains a melodic line with eighth notes. Bass staff contains a melodic line with eighth notes.

loco

Handwritten musical notation for the first system, featuring a treble and bass staff with various notes and accidentals.

ritard

Handwritten musical notation for the second system, including a "ritard" marking and a "sa" marking above the treble staff.

fissura *loco*

Handwritten musical notation for the third system, with "fissura" and "loco" markings.

fissura

Handwritten musical notation for the fourth system, featuring a "fissura" marking and a double bar line.

loco

Handwritten musical notation for the fifth system, including a "loco" marking and various rhythmic values.

lunge simile *fissura* *pp.*

Handwritten musical notation for the sixth system, with "lunge simile", "fissura", and "pp." markings.

loco

Handwritten musical notation for the seventh system, including a "loco" marking and a "sa" marking.

8a *loco* *rapido e forte*

Velocissimo
ff sempre

molte llato *ppp rallent*

8a *loco*

8a

loco *leggiere*

Handwritten musical score for piano and voice. The score consists of six systems of staves. The first system shows a piano introduction with a treble clef and a bass clef, marked *lento*. The second system introduces the vocal line with a treble clef and the word *sa* written above the notes. The third system continues the piano accompaniment with a bass clef. The fourth system shows the vocal line with a treble clef and the word *sa* again. The fifth system features a piano accompaniment with a bass clef and a *3/8* time signature, marked *lento*. The sixth system concludes the piece with a piano accompaniment in a *3/8* time signature, marked *lento*, and ends with a *Fine.* marking and a double bar line.

