

Mus. ant.  
pract.

L 875

L 875

Musik



PRIMA PARTE  
DELL'AVREA  
CORONA

DELLA NATÀ PARMONIA

Composta da

Chi Quirico Voci & Sull'Avrea

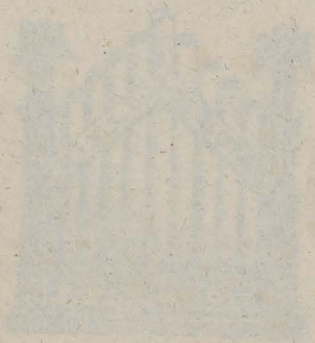
Autore della *Lettera del* *Signor* *di* *...*

Di *...* *...* *...*

*...* *...* *...*

*...* *...* *...*

*...* *...* *...*



VENEZIA MDCXXV

*...* *...* *...*





CANTO Primo

PRIMA PARTE

# DELL' AVREA CORONA

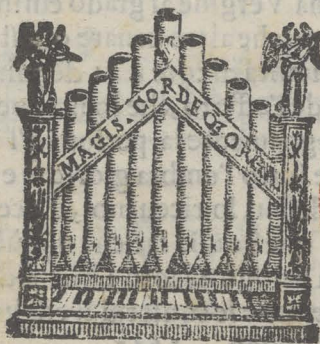
INGEMMAT A D'ARMONICI  
Concerti, a Dieci

Con Quattro Voci, & Sei Istromenti.

*In Lode della Santissima Incoronata di Vicenza,  
Di Leon Leoni, Academico Olimpico.*

Et anco con le Voci sole, con il Basso continuo  
Et a due Chori diuisi, adoprando li Bassi dell'vno e l'altro Choro  
con Organi, Chitaroni, o simili.

Nonamencomp osta, & data in luce



IN VENETIA M. DCXV.

Appresso Ricciardo Amadino.

F





MI  
ALL'ILLVSTRISS. SIGNORI  
DEPV TATI AL PVBLICO GOVERNO  
dell' Illuſtriſs. Città di Vicenza, miei Sig. collendiſſimi.



A diuotione, e la pietà, che ha moſſo queſta Illuſtriſs. Città di Vicenza alcuni anni ſono a celebrare ogni Sabato cõ opera degna d'immortal memoria, le diuine Lodi de la Beatifs. Vergine, ha parimente a me dato animo di teſſerle queſta AVREA CORONA, la quale io ben conoſco douer eſſer di lei ornamento indegno, ſe di veſtirla e coronarla indegni ſono gli ſplendori dil Sole, e le Stelle del Cielo. Ma ſarà forſe da lei gradita ſe humile, e piameſte offerta ſi veſtirà di quelle gran virtù, che puotero eſſa ltrare la medefima Vergine al grado eminētiffimo di Madre di Dio. Per queſto io, che non hò con che altro ornare queſto mio pouero dono, lo dedico, & offeriſco a lei con humiltà di core. Si degnino VV.SS. Illuſtriſſime di accompagnarlo con la pietà de l'affetto, che io non per altro l'appreſento a loro. E gia che elle ſoſtengono degnamente la perſona e'l nome di queſta Illuſtriſs. Città, che lieta, e ſicura viue ſotto l'ombra glorioſa e grande de la Santifs. Vergine, in vece della Città medefima lo riceuano, e riceuuto a gli eterni honori di lei lo conſacrino, & habbian queſte mie fatiche il più bello di tutti gli ornamenti dal ſolo eſſer gradite da la benignità loro: Mentre che io in tanto prego il Signor Iddio che feliciffime ſempre le conſerui & eſalti.

Di Venetia, il primo di Giugno. 1615.

Di VV.SS. Illuſtriſs.

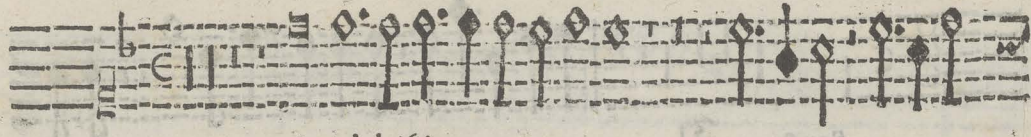
Deuotiſs. Seruitore

Leon Leoni.





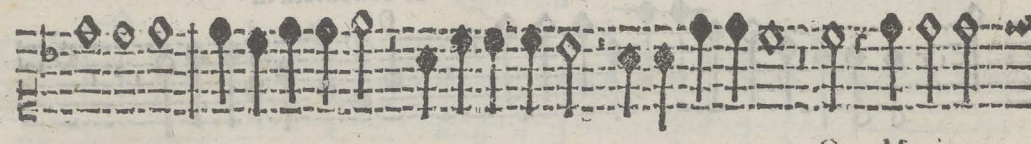
Sinfonia



Aue dulcissima



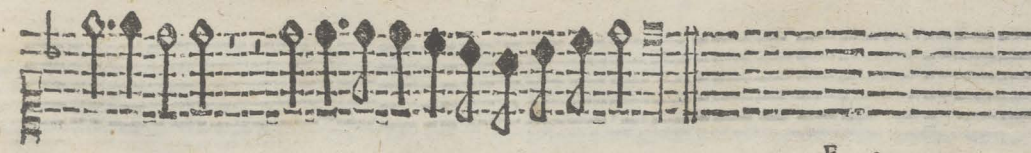
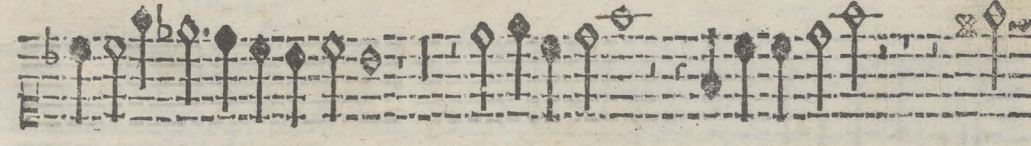
Dulce



O Maria



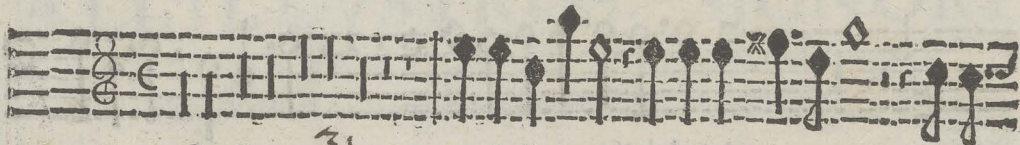
Ad te







Sinfonia



Sancta

31.

Benedicta tu

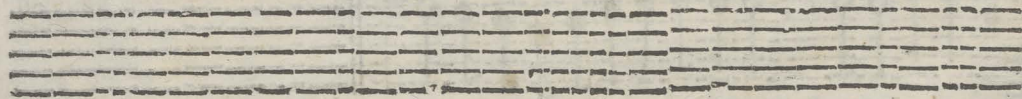
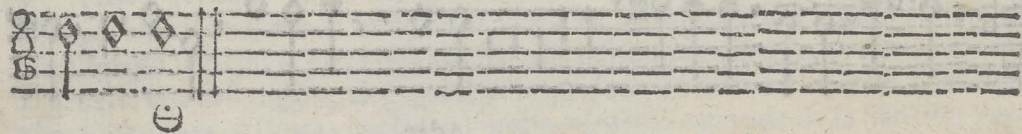


21.

& benedicta tu



alle/na





A musical staff in G major (one sharp) and common time. It begins with a treble clef and a common time signature. The notation consists of a series of quarter notes, mostly on the G line, with some eighth notes and a final quarter note with a fermata.

Sinfonia

A musical staff in G major and common time. It begins with a treble clef. The notation consists of a series of quarter notes, mostly on the G line, with some eighth notes and a final quarter note with a fermata.

A musical staff in G major and common time. It begins with a treble clef and a common time signature. The notation consists of a series of quarter notes, mostly on the G line, with some eighth notes and a final quarter note with a fermata.

Omnes gentes

A musical staff in G major and common time. It begins with a treble clef. The notation consists of a series of quarter notes, mostly on the G line, with some eighth notes and a final quarter note with a fermata.

Quoniam

A musical staff in G major and common time. It begins with a treble clef. The notation consists of a series of quarter notes, mostly on the G line, with some eighth notes and a final quarter note with a fermata.

A musical staff in G major and common time. It begins with a treble clef. The notation consists of a series of quarter notes, mostly on the G line, with some eighth notes and a final quarter note with a fermata.

Miserere

A musical staff in G major and common time. It begins with a treble clef. The notation consists of a series of quarter notes, mostly on the G line, with some eighth notes and a final quarter note with a fermata.

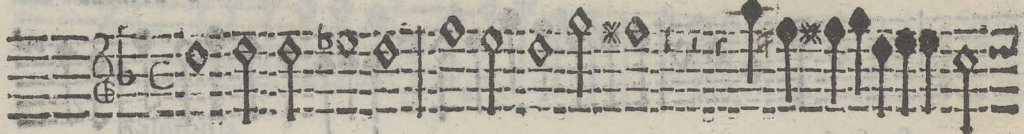
Four empty musical staves, each with a treble clef and a common time signature, indicating the end of the musical piece on this page.



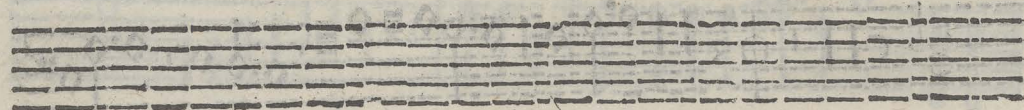
Violino.

4

CHORVS Primus



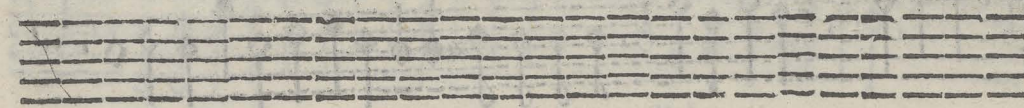
Sinfonia



Exaudi Domine Tacet.



Sinfonia Secunda



Tibi dixit Tacet.

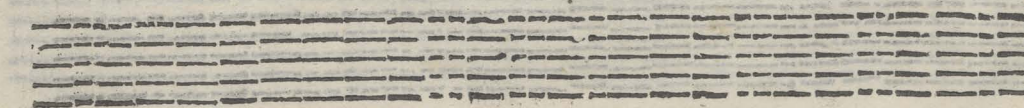


Tutti Miserere mei ij & exaudi



Ne auertas Tacet.

Miserere vt sup.



Corona d' orologia B.V. di Leoni Putei



Violino.

CHORVS Primus

55

Sinfonia

Beata es is is Beata es

28.

Beata vbera alleluia

29.

Beata es



A musical staff containing ten diamond-shaped notes, each with a vertical stem. The notes are arranged in a sequence across the staff, with some notes having additional markings above them.

Sinfonia

A musical staff containing ten diamond-shaped notes, each with a vertical stem. The notes are arranged in a sequence across the staff, with some notes having additional markings above them.

Tacer.

A musical staff containing ten diamond-shaped notes, each with a vertical stem. The notes are arranged in a sequence across the staff, with some notes having additional markings above them.

Tutti Assumpta est Maria

A musical staff containing ten diamond-shaped notes, each with a vertical stem. The notes are arranged in a sequence across the staff, with some notes having additional markings above them.

A musical staff that is very faded and difficult to read. It appears to contain diamond-shaped notes and stems, similar to the other staves on the page.

Aperta est nobis Tacer. Te laudamus Tacer.

A musical staff containing ten diamond-shaped notes, each with a vertical stem. The notes are arranged in a sequence across the staff, with some notes having additional markings above them.

Tutti Assumpta est

A musical staff containing ten diamond-shaped notes, each with a vertical stem. The notes are arranged in a sequence across the staff, with some notes having additional markings above them.

Four empty musical staves at the bottom of the page, with no notes or markings.



20

Veni dilecte mi

Sinfonia

Sinfonia Prima

12. Manefurgamus

Sinfonia

14. Aprchedam



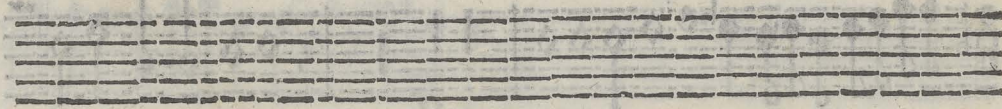
Violino

8

CHORVS Primus



Sinfonia Prima



O pijsfime Iesu Tacet.



Sinfonia Secunda



O dulcissime Iesu Tacet.



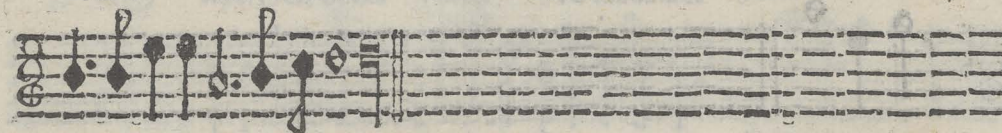
Tutti

Vide Domine

37

Et misere

ij



Corona d'oro alla B.V. di Leon. Scip. P. 1711



A musical staff in treble clef with a common time signature (C). It contains a series of notes, including a half note with a flat (Bb) and several quarter notes.

Sinfonia

A musical staff in treble clef with a common time signature (C). It begins with a treble clef and a common time signature, followed by a series of notes.

A musical staff in treble clef with a common time signature (C). It contains a series of notes, including a half note with a flat (Bb) and several quarter notes.

Aue virgo

Mater Dei

Favo mellis

A musical staff in treble clef with a common time signature (C). It contains a series of notes, including a half note with a flat (Bb) and several quarter notes.

Omnis virtus

Quaerendum

20.

A musical staff in treble clef with a common time signature (C). It contains a series of notes, including a half note with a flat (Bb) and several quarter notes.

Esto nobis

A musical staff in treble clef with a common time signature (C). It contains a series of notes, including a half note with a flat (Bb) and several quarter notes.

An empty musical staff with five lines.

An empty musical staff with five lines.

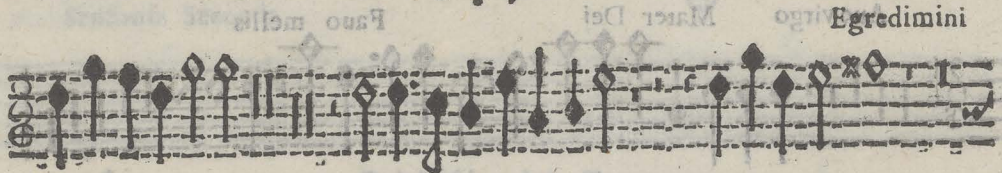
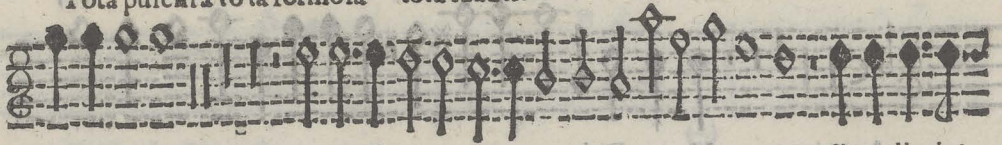




Sinfonia



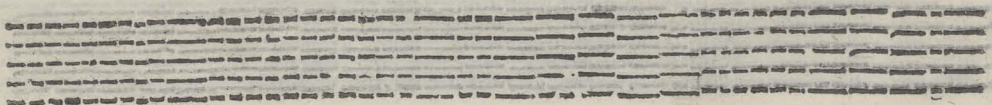
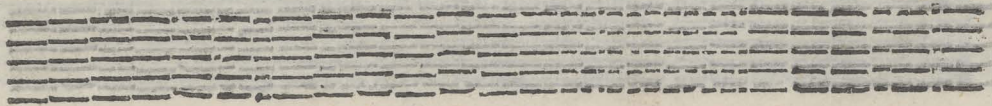
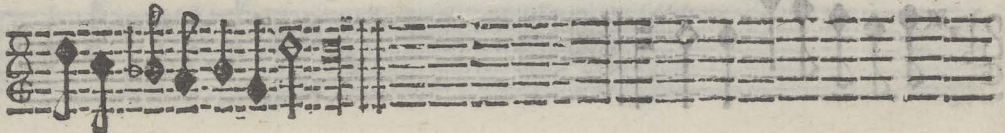
Tota pulchra tota formosa tota suavis.



Qua cherubim



Tota formosa





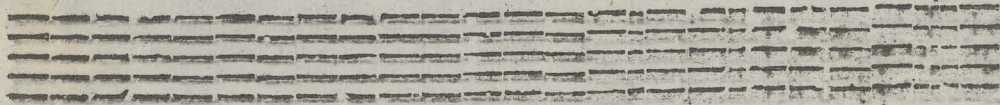
Violino

11

CANTVS Primus



Sinfonia



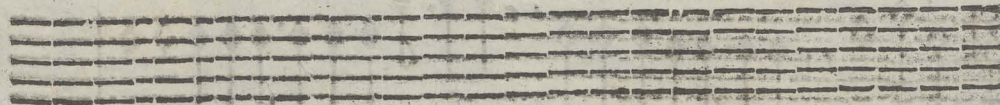
In hac die Tacer.

Introite Tacer

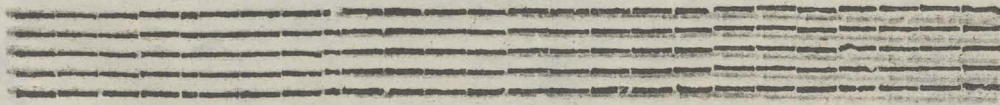
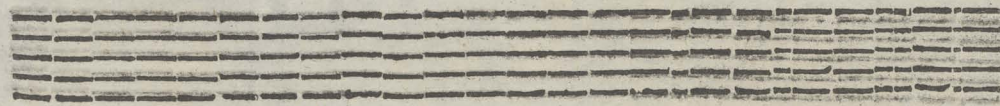
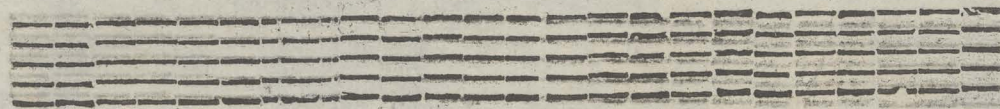


Tutti

Iubilare Deo



In himnis Tacer. Iubilare vt supra.



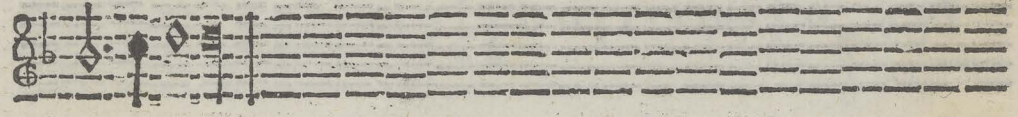
Corona d'oro alla B.V. di Leon Leoni Parte 1.

F 7



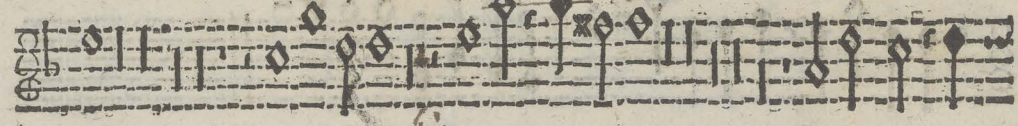


Sin fonia



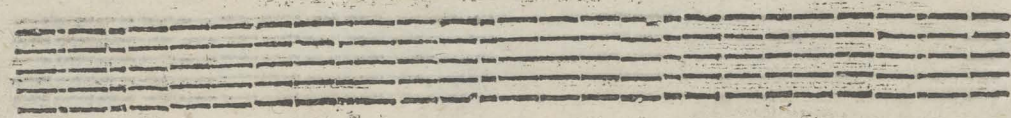
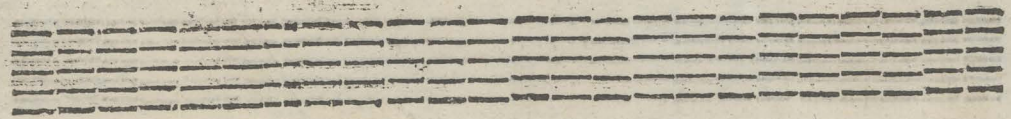
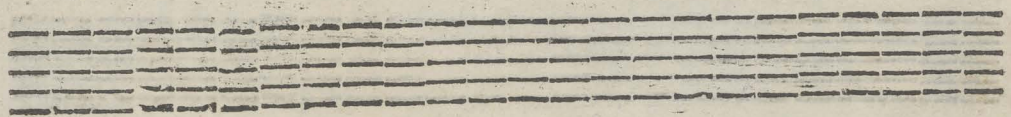
Venite filij

Quis est homo



inquire

vt perdat





Violino

Decem Voc.

13

CHORVS Primus

Musical staff for Violino, featuring a treble clef, a key signature of one flat (B-flat), and a common time signature (C). The notation includes various note values and rests.

Sinfonia

Musical staff for Sinfonia, featuring a treble clef, a key signature of one flat, and a common time signature. The notation includes various note values and rests.

Musical staff for Sinfonia, featuring a treble clef, a key signature of one flat, and a common time signature. The notation includes various note values and rests.

Exurge Maria

Musical staff for Exurge Maria, featuring a treble clef, a key signature of one flat, and a common time signature. The notation includes various note values and rests.

Musical staff for Exurge Maria, featuring a treble clef, a key signature of one flat, and a common time signature. The notation includes various note values and rests.

3

Adre

Musical staff for Exurge Maria, featuring a treble clef, a key signature of one flat, and a common time signature. The notation includes various note values and rests.

Non deficiat

Musical staff for Non deficiat, featuring a treble clef, a key signature of one flat, and a common time signature. The notation includes various note values and rests.

Musical staff for Non deficiat, featuring a treble clef, a key signature of one flat, and a common time signature. The notation includes various note values and rests.





Sinfonia

Protektor noster aspice Deus de sede sancta tua & miserere nobis



Duo

Populum ruum



Sinfonia

Protektor noster aspice Deus de sede sancta tua & miserere nobis



Duo

Misericors



Tutti

Protektor noster aspice Deus de sede sancta tua & miserere nobis





A musical staff in treble clef with a common time signature (C). It contains a series of notes, mostly quarter notes, with some eighth notes. The notes are mostly on the middle lines of the staff.

Sinfonia

A musical staff in treble clef with a common time signature (C). It contains a series of notes, mostly quarter notes, with some eighth notes. The notes are mostly on the middle lines of the staff.

Quæ est ista

Ipsam inuocamus

A musical staff in treble clef with a common time signature (C). It contains a series of notes, mostly quarter notes, with some eighth notes. The notes are mostly on the middle lines of the staff.

A musical staff in treble clef with a common time signature (C). It contains a series of notes, mostly quarter notes, with some eighth notes. The notes are mostly on the middle lines of the staff.

17.

Ista est viero Maria

Ipsam inuo-

A musical staff in treble clef with a common time signature (C). It contains a series of notes, mostly quarter notes, with some eighth notes. The notes are mostly on the middle lines of the staff.

camus

ad Dominum

An empty musical staff with five lines.

An empty musical staff with five lines.

An empty musical staff with five lines.



A musical staff with a treble clef and a common time signature (C). It contains a series of notes, including quarter and eighth notes, with some notes marked with diamond-shaped ornaments.

Sinfonia

A musical staff with a treble clef and a 3/4 time signature. It contains a series of notes, including quarter and eighth notes, with some notes marked with diamond-shaped ornaments.

Exul.ent

16.

in letitia

A musical staff with a treble clef and a common time signature (C). It contains a series of notes, including quarter and eighth notes, with some notes marked with diamond-shaped ornaments.

21.

Date gloriam

A musical staff with a treble clef and a common time signature (C). It contains a series of notes, including quarter and eighth notes, with some notes marked with diamond-shaped ornaments.

pleni sunt

M. mirabilis virgo

A musical staff with a treble clef and a common time signature (C). It contains a series of notes, including quarter and eighth notes, with some notes marked with diamond-shaped ornaments.

13.

fiat

An empty musical staff with a treble clef and a common time signature (C).

An empty musical staff with a treble clef and a common time signature (C).

An empty musical staff with a treble clef and a common time signature (C).



Musical staff with a treble clef and a common time signature (C). It contains a series of notes, including quarter and eighth notes, with stems pointing upwards.

Sinfonia

Musical staff with a treble clef and a common time signature (C). It contains a series of notes, including quarter and eighth notes, with stems pointing upwards.

Musical staff with a treble clef and a common time signature (C). It contains a series of notes, including quarter and eighth notes, with stems pointing upwards.

Surgite mortui

Musical staff with a treble clef and a common time signature (C). It contains a series of notes, including quarter and eighth notes, with stems pointing upwards.

Venite

Musical staff with a treble clef and a common time signature (C). It contains a series of notes, including quarter and eighth notes, with stems pointing upwards.

Vbi erit

Musical staff with a treble clef and a common time signature (C). It contains a series of notes, including quarter and eighth notes, with stems pointing upwards.

Musical staff with a treble clef and a common time signature (C). It contains a series of notes, including quarter and eighth notes, with stems pointing upwards.

Five empty musical staves at the bottom of the page.





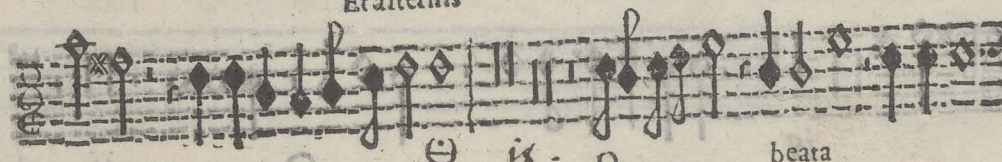
Sinfonia



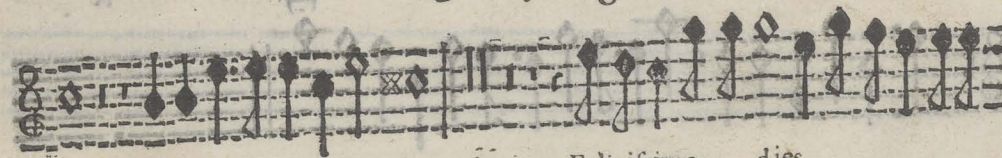
Felicissima dies



Et alternis



is - o beata



Felicissima dies



ij



A musical staff in G-clef and C-clef with a common time signature. It contains a series of notes, some with stems pointing up and some with stems pointing down, interspersed with rests. There are some markings above the notes, possibly indicating ornaments or specific performance instructions.

Sinfonia

A musical staff in G-clef and C-clef with a common time signature. It contains a series of notes, some with stems pointing up and some with stems pointing down, interspersed with rests. There are some markings above the notes, possibly indicating ornaments or specific performance instructions.

A musical staff in G-clef and C-clef with a common time signature. It contains a series of notes, some with stems pointing up and some with stems pointing down, interspersed with rests. There are some markings above the notes, possibly indicating ornaments or specific performance instructions.

A musical staff in G-clef and C-clef with a common time signature. It contains a series of notes, some with stems pointing up and some with stems pointing down, interspersed with rests. There are some markings above the notes, possibly indicating ornaments or specific performance instructions.

Beata Dei

33.

Santa Maria

refoue

A musical staff in G-clef and C-clef with a common time signature. It contains a series of notes, some with stems pointing up and some with stems pointing down, interspersed with rests. There are some markings above the notes, possibly indicating ornaments or specific performance instructions.

19.

Sentiant

4.

A musical staff in G-clef and C-clef with a common time signature. It contains a series of notes, some with stems pointing up and some with stems pointing down, interspersed with rests. There are some markings above the notes, possibly indicating ornaments or specific performance instructions.

A musical staff in G-clef and C-clef with a common time signature. It contains a series of notes, some with stems pointing up and some with stems pointing down, interspersed with rests. There are some markings above the notes, possibly indicating ornaments or specific performance instructions.

Four empty musical staves at the bottom of the page, with no notes or markings.



A single musical staff in treble clef with a common time signature. It contains a series of notes, including a sharp sign, and some notes are marked with diamond symbols.

Sinfonia

A musical staff in bass clef with a common time signature. It contains a series of notes, some marked with diamond symbols, and a fermata over the final note.

A musical staff in treble clef with a common time signature. It contains a series of notes, some marked with diamond symbols, and a fermata over the final note.

Oportet

qui quærit

A musical staff in treble clef with a common time signature. It contains a series of notes, some marked with diamond symbols, and a fermata over the final note.

30.

Beatus

A musical staff in bass clef with a common time signature. It contains a series of notes, some marked with diamond symbols, and a fermata over the final note.

Oportet enim

A musical staff in bass clef with a common time signature. It contains a series of notes, some marked with diamond symbols, and a fermata over the final note.

An empty musical staff with a common time signature.

An empty musical staff with a common time signature.





Sinfonia

Sinfonia



20. Sub tuum

Confitebimur

si BA

adhibend O



22.

Confundantur



17.

Confitebimur



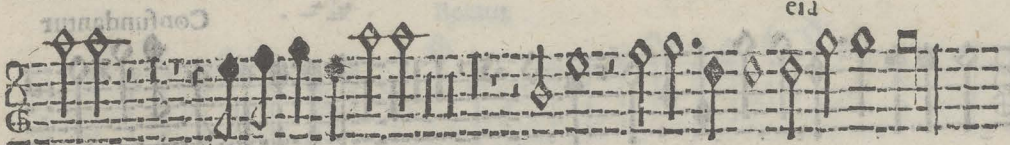




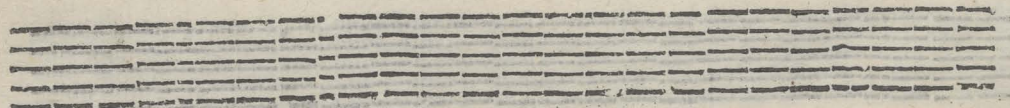
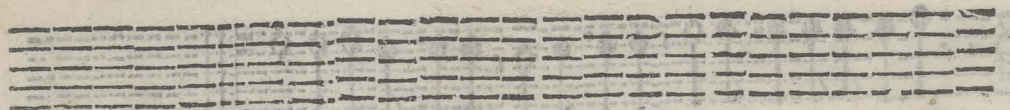
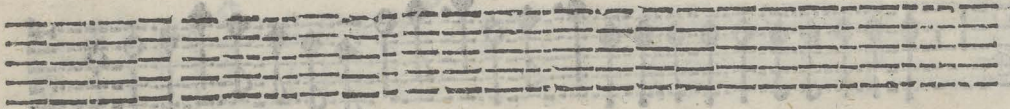
Sinfonia



O benedicta 31. Ad te 13. eia



13.





Violino.

23

CANTVS Primus



Sinfonia



Ne reminiscaris

Ecco



Aspice Domine



ii. Quia

propter puritatem

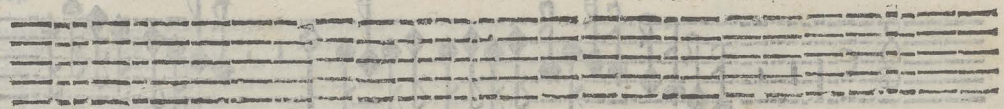






Sinfonia

Sinfonia



Reco

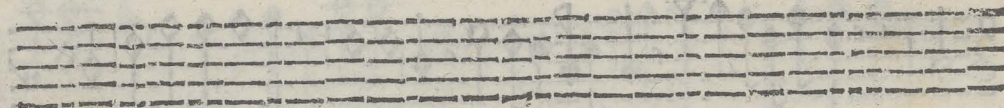
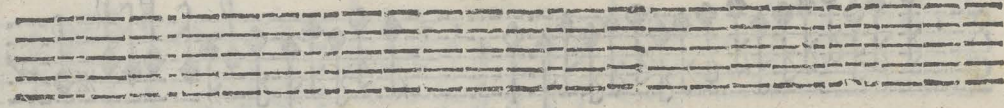
Qualis est.

Reco

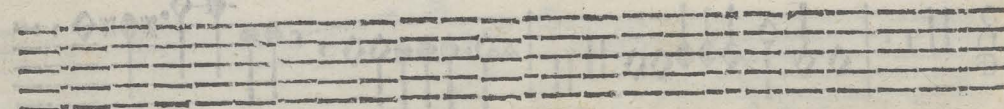
Recomitatus



Sinfonia vi supra.

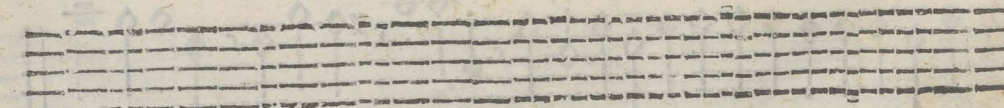
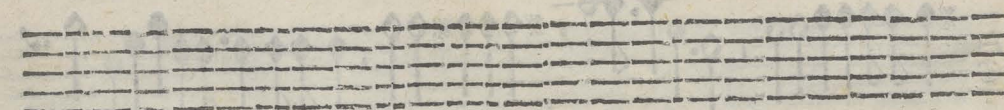


Domine



Recomitatus

Qua





A musical staff in G major, 3/4 time, featuring a series of eighth notes and quarter notes.

Sinfonia

A musical staff in G major, 3/4 time, continuing the melodic line.

A musical staff in G major, 3/4 time, with a '3' time signature and a repeat sign.

Annuntio vobis alleluia

A musical staff in G major, 3/4 time, with a '3' time signature.

Quem vidistis Natum vidimus

A musical staff in G major, 3/4 time, with a '3' time signature.

alleluia

Dicite quid

A musical staff in G major, 3/4 time, with a '3' time signature.

Natum vidimus

A musical staff in G major, 3/4 time, with a '3' time signature.

Gloria

A musical staff in G major, 3/4 time, with a '3' time signature.

alleluia





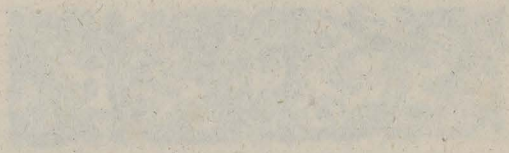
# TAVOLA.

Aue Dulcissima Maria	1	Exurge Maria	13
Sancta & immaculata.	2	Protector noster	14
Omnes gentes	3	Quæ est ista	15
Exaudi Domine	4	Exultent iusti	16
Beata es	5	Surgite mortui	17
Assumpta est Maria.	6	Felicissima dies	18
Veni dilecte mi	7	Beata Dei genetrix	19
O piissime Iesu	8	Oportet peite	20
Aue Virgo	9	Sub tuum presidium	21
Tota pulcra es	10	O benedicta Virgo	22
In hac die	11	Ne reminiscaris	23
Venite filii	12	Qualis est.	24
		Annuntio vobis.	25



3  
4  
5  
6  
7  
8  
9  
1  
2  
3  
4  
5





# TAYOLA

1. ...  
2. ...  
3. ...  
4. ...  
5. ...  
6. ...  
7. ...  
8. ...  
9. ...  
10. ...

1. ...  
2. ...  
3. ...  
4. ...  
5. ...  
6. ...  
7. ...  
8. ...  
9. ...  
10. ...



Mus. proest. ant.



