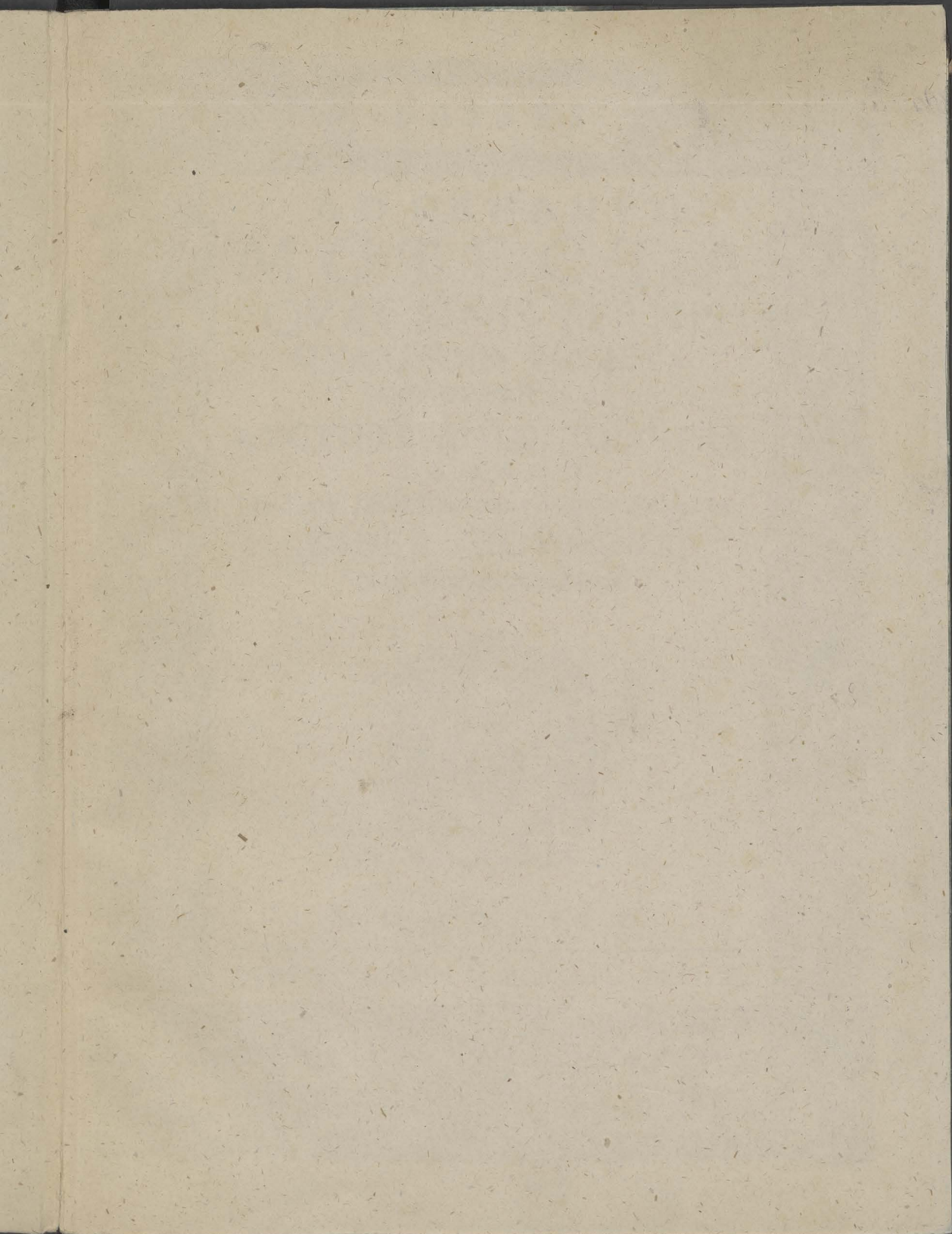


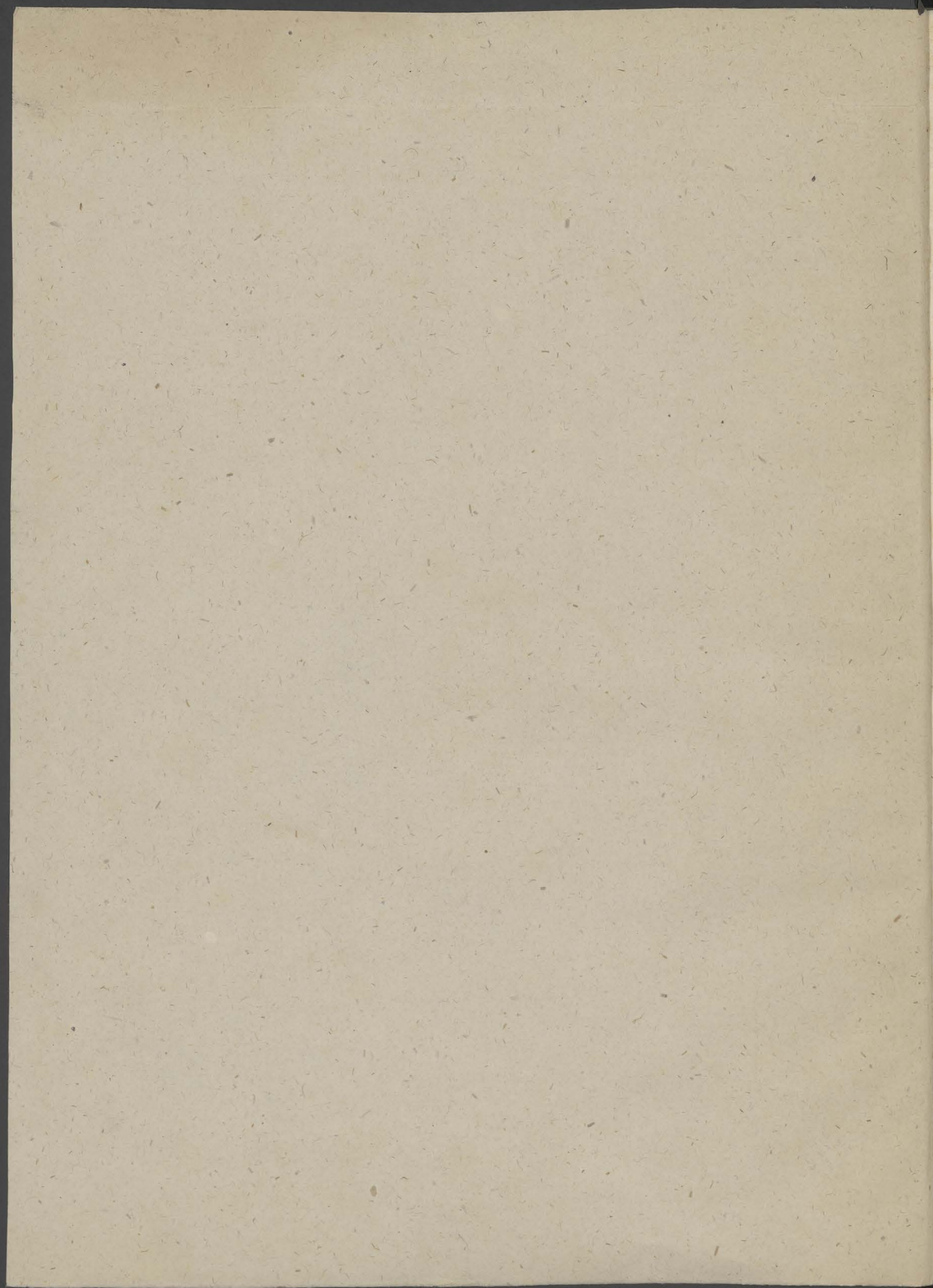


Mus. ant.  
pract.  
C 635

L. 635

Musik





BASSVS

122.  
c.2

AD ORGANVM  
MOTECTA  
QVAE BINIS, TERNIS  
QVATERNIS VOCIBVS  
CONCINVTVR  
AVCTORE ANTONIO CIFRA  
ROMANO

*In Alma Aede Lauretana Musica Magistro*

OPVS VNDECIMVM  
LIBER QVINTVS  
Nunc primum in lucem aeditus.



VENETIIS

Apud Alexandrum Vincentium. 1621. C

1  
2  
3  
4  
5  
6  
7  
8  
9  
0  
0  
1  
2  
3



BASSVS

AD ORDANVM  
MOTECTA  
OVAE BINIS TERNIS  
QVATERNIS VOIBVS

CONCIANTVA  
AVCTORE ANTONIO CIFRA  
ROMANO

In Abbat. E. de Laureana Mag. Sc. Magistro

OPVS VINDICIAM  
LIBER QVINTVS  
Nuncupatum in laudatione



VENETIIS

Apud Alexandrum Vascinum. 1631. C.

A Due Soprani.

F

D

6 6



A musical staff with a treble clef and a common time signature. It contains several measures of music with notes and rests. Above the staff, the number '6' is written twice.

Vm eslet

98



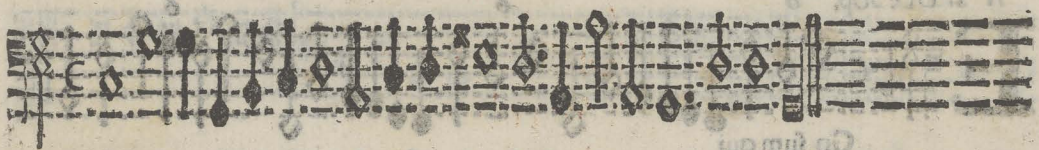
A musical staff with a treble clef and a common time signature. It contains several measures of music with notes and rests.



A musical staff with a treble clef and a common time signature. It contains several measures of music with notes and rests.



A musical staff with a treble clef and a common time signature. It contains several measures of music with notes and rests.



A musical staff with a treble clef and a common time signature. It contains several measures of music with notes and rests.



A musical staff that is very faded and difficult to read, appearing to contain several measures of music.



A musical staff that is very faded and difficult to read, appearing to contain several measures of music.



A musical staff that is very faded and difficult to read, appearing to contain several measures of music.



Due Soprani.

A Due Soprani.

**B**

Eata mater

V. effec

A 2. Due Sop. 6

**E**

Go sum qui

A 2. Due Soprani.

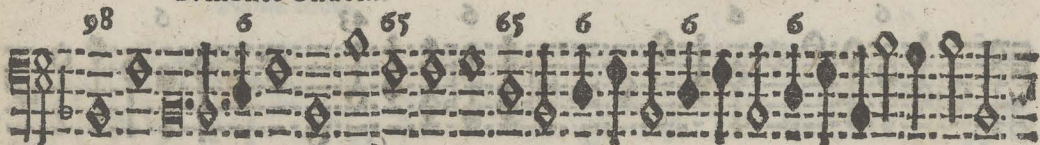
6 6 b 6 43 43 6 6 76 6 76 6



The first staff of music features a series of notes on a five-line staff. Above the staff, lute tablature numbers are written: 6, 6, b, 6, 43, 43, 6, 6, 76, 6, 76, 6. The notes are mostly quarter notes and half notes, with some beamed eighth notes.

N monte Oliueti.

98 6 65 65 6 6 6



The second staff of music continues the piece. Above the staff, lute tablature numbers are written: 98, 6, 65, 65, 6, 6, 6. The notation includes various note values and rests.

6 6 65 6 6



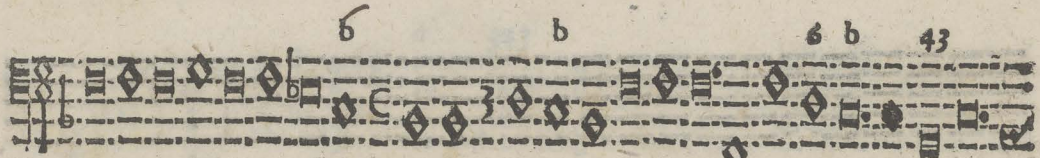
The third staff of music continues the piece. Above the staff, lute tablature numbers are written: 6, 6, 65, 6, 6. The notation includes various note values and rests.

6 b 43



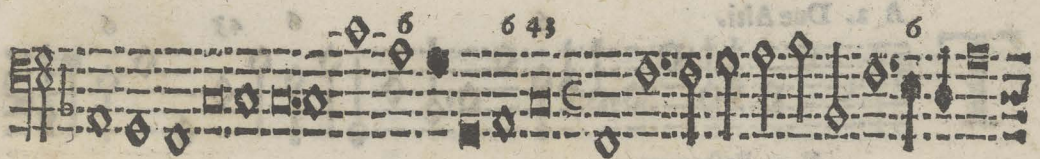
The fourth staff of music continues the piece. Above the staff, lute tablature numbers are written: 6, b, 43. The notation includes various note values and rests.

6 b 6 b 43



The fifth staff of music continues the piece. Above the staff, lute tablature numbers are written: 6, b, 6, b, 43. The notation includes various note values and rests.

6 6 43 6



The sixth staff of music continues the piece. Above the staff, lute tablature numbers are written: 6, 6, 43, 6. The notation includes various note values and rests.

6 6 343 6 6



The seventh staff of music continues the piece. Above the staff, lute tablature numbers are written: 6, 6, 343, 6, 6. The notation includes various note values and rests.

65 43



The eighth staff of music continues the piece. Above the staff, lute tablature numbers are written: 65, 43. The notation includes various note values and rests.

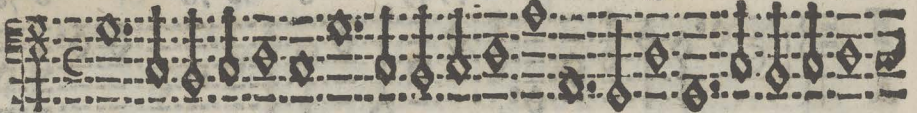
Due Contralti.

4

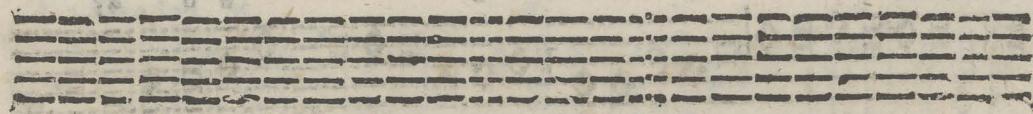
6 43

76

**B**



Eatus Andreas.



A a. Due Altri.

6

6 43

6

**T**



V es Pastoronium.



A 2. Due Tenori.

A

6 6 6 43 63 56 76

Nima mea.

4 3

34 43

343

D

Illeus meus.

A 2. Due Bassi.

73

76

6 76 43

**B**



Eatus vir.

6 76

65 43 43

6



76

43

43

6



6

43

43

6

6

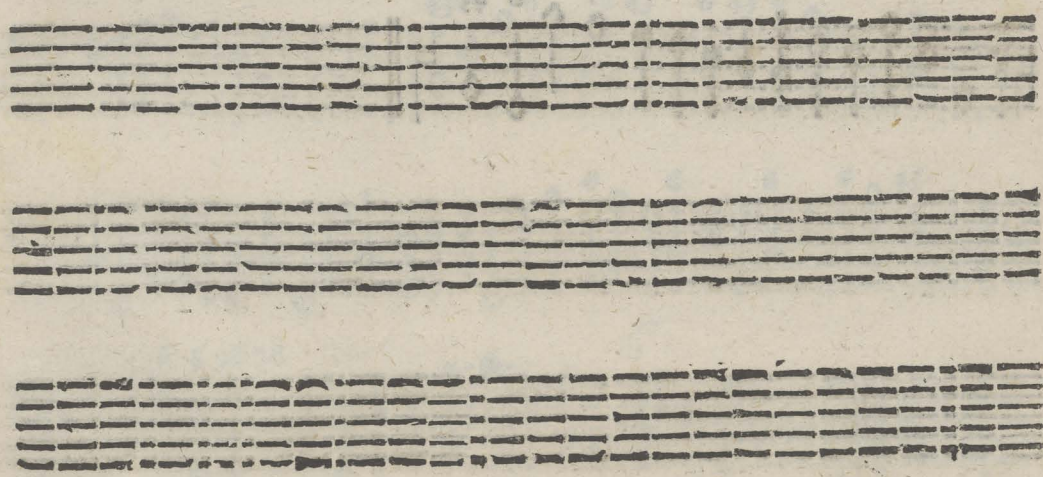


6

6

6

43



D

6 6 6 43 65 65

Omne pater.

65

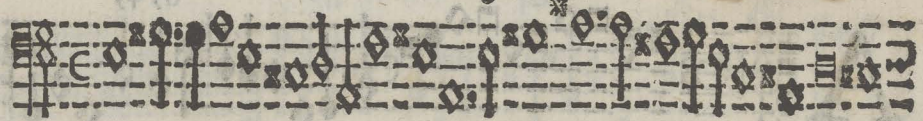
56 6 6

56 43 343 43

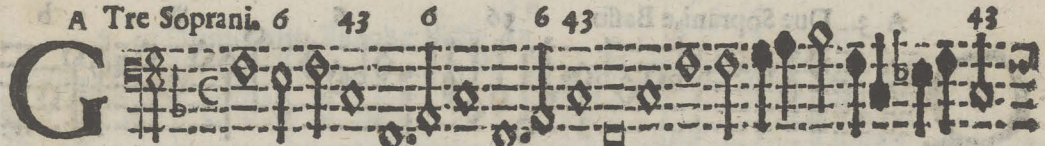
76 343 76

6 43

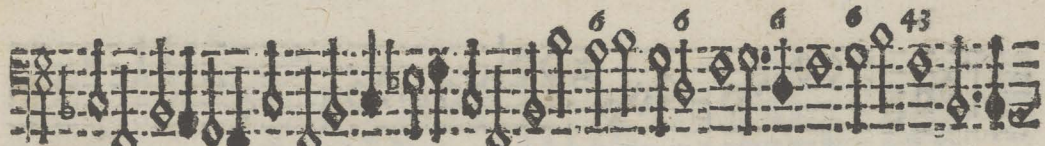
**A**



D Dominum.



Loriosi.





**A**

First musical staff for section A, featuring a treble clef and a common time signature. The staff contains a series of notes and rests, with some notes marked with diamond-shaped ornaments.

Vdite caeli.

Second musical staff for section A, continuing the melody. It includes several measures with diamond-shaped ornaments above the notes.

Third musical staff for section A, showing further development of the musical line with various ornaments.

Fourth musical staff for section A, concluding the phrase with a final cadence.

**Q**

First musical staff for section Q, starting with a treble clef and a common time signature. The notation includes notes, rests, and diamond-shaped ornaments.

Vanti mercenarij.

Second musical staff for section Q, continuing the melodic line with various ornaments.

Third musical staff for section Q, showing further development of the musical line.

Fourth musical staff for section Q, concluding the phrase with a final cadence.

A 4. Due Soprani, Alto, e Basso.

Handwritten musical notation on a single staff. It begins with a large, bold letter 'I'. The staff contains several measures of music with notes, rests, and clefs. Above the staff, there are handwritten numbers '56' and '56'.

Esum omnes

Handwritten musical notation on a single staff. It contains several measures of music with notes, rests, and clefs. Above the staff, there are handwritten numbers '643' and '643'.

Handwritten musical notation on a single staff. It contains several measures of music with notes, rests, and clefs. Above the staff, there is a handwritten number '343'.

Handwritten musical notation on a single staff. It contains several measures of music with notes, rests, and clefs. Above the staff, there is a handwritten number '43'.

A 4. Canto, Alto, Tenor, e Basso.

Handwritten musical notation on a single staff. It begins with a large, bold letter 'Q'. The staff contains several measures of music with notes, rests, and clefs. Above the staff, there are handwritten numbers '43' and '43'.

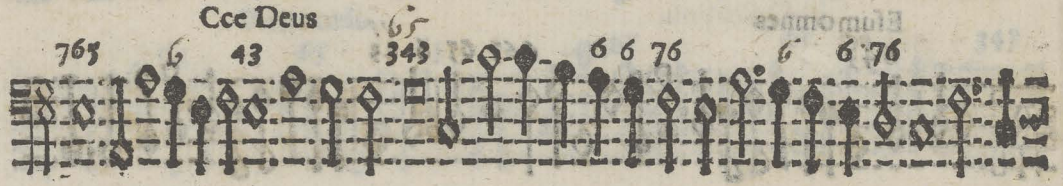
Vando Iesus diligitur

Handwritten musical notation on a single staff. It contains several measures of music with notes, rests, and clefs. Above the staff, there are handwritten numbers '76', '43', and '43'.

Handwritten musical notation on a single staff. It contains several measures of music with notes, rests, and clefs. Above the staff, there is a handwritten number '6'.

Handwritten musical notation on a single staff. It contains several measures of music with notes, rests, and clefs. Above the staff, there are handwritten numbers '56' and '43'.

**E** 

*Cce Deus* 

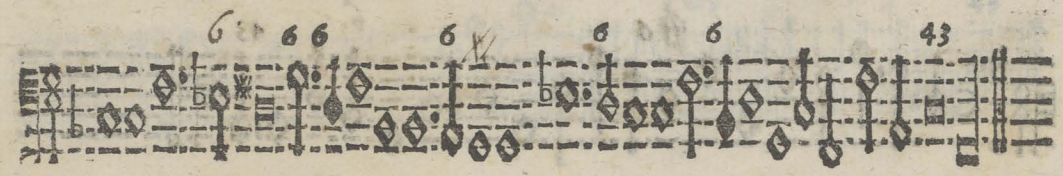




**I** *A Quattro* 

*Vistorum animæ* 





A 4, Due Soprani, Alto, e Basso.



6 56 6 76 13 343 76 4 6

Handwritten musical notation on a single staff. It begins with a large 'O' and contains several measures of music with diamond-shaped notes. Fingerings are indicated by numbers 6, 56, 6, 76, 13, 343, 76, 4, and 6 above the notes.

Quam pulchra est

7 6 43 6 6 43 43 6 43

Handwritten musical notation on a single staff. It contains several measures of music with diamond-shaped notes. Fingerings are indicated by numbers 7, 6, 43, 6, 6, 43, 43, 6, and 43 above the notes.

6 43 5676 76 6 6 6 6 6 43

Handwritten musical notation on a single staff. It contains several measures of music with diamond-shaped notes. Fingerings are indicated by numbers 6, 43, 5676, 76, 6, 6, 6, 6, 6, and 43 above the notes.

6 43 6 56

Handwritten musical notation on a single staff. It contains several measures of music with diamond-shaped notes. Fingerings are indicated by numbers 6, 43, 6, and 56 above the notes.

43 43 43 34356343

Handwritten musical notation on a single staff. It contains several measures of music with diamond-shaped notes. Fingerings are indicated by numbers 43, 43, 43, and 34356343 above the notes.

56 43

Handwritten musical notation on a single staff. It contains several measures of music with diamond-shaped notes. Fingerings are indicated by numbers 56 and 43 above the notes.

A set of empty musical staves, consisting of five horizontal lines.

A set of empty musical staves, consisting of five horizontal lines.



TAVOLA DE I MOTETTI A DVE. A TRE,  
ET A QVATTRO VOCI  
DI ANTONIO CIFRA.



A DVE VOCI.

<b>D</b> Vm esset sumus Pont, fex	Due Soprani	1
Beata Mater & intacta Virgo	Due Soprani	2
Ego sum qui sum & consilium meum	Due Soprani	2
In monte Oliueti orauit ad patrem	Due Soprani	3
Beatus Andreas orabat dicens	Due Alti	4
Tues pastor ouium	Due Tenori	4
Dilectus meus mihi	Canto, e Tenore	5
Anima mea liquefacta est	Due Tenori	6
Beatus vir qui inuentus	Due Bassi	7
Domine pater & Deus	Canto, e Basso	8
Ad Dominum cum tribularer	Canto, e Basso	9

A TRE VOCI

Gloriosi principes terraz	Tre Soprani	9
Audite cæli quæ loquor	Due Soprani, e Basso	10
Quanti mercenarij	Due Soprani, e Basso	10

A QVATTRO VOCI.

Iesum omne. agnoscite	Due Soprani, Alto, e Basso	11
Quando Iesus diligitur	Canto, Alto, Tenor e Basso	11
Ecce Deus magnus	Due Soprani Alto, e Basso	12
Iustorum animæ	Due Soprani, Alto, e Basso.	13
O quam pulchra est	Due Soprani Alto, e Bassol	13

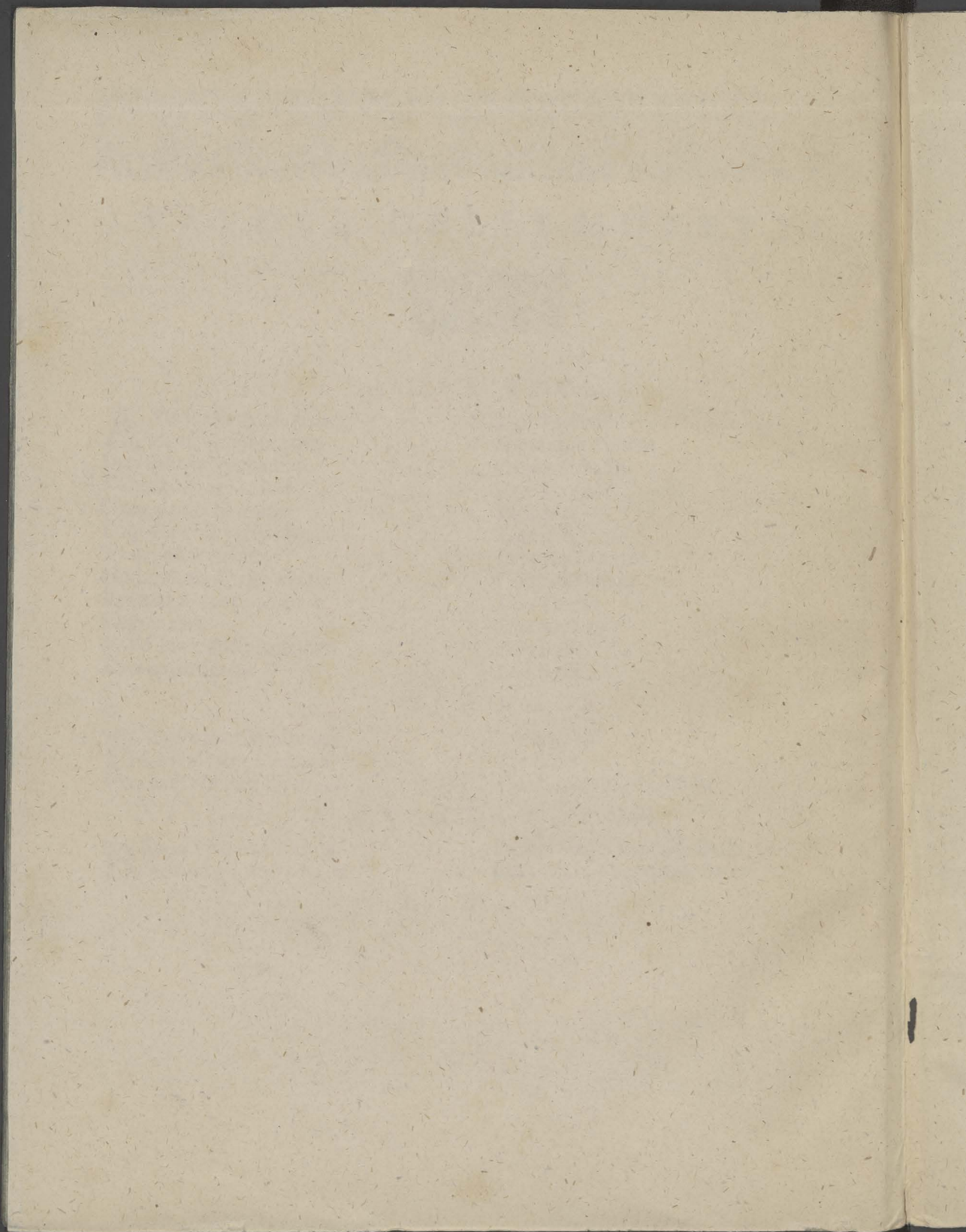
I L F I N E



1  
2  
3  
4  
4  
5  
6  
6  
7  
8  
8  
9

10  
10  
11

13  
13



Mus. - front, cent.



