

Mus. ant.

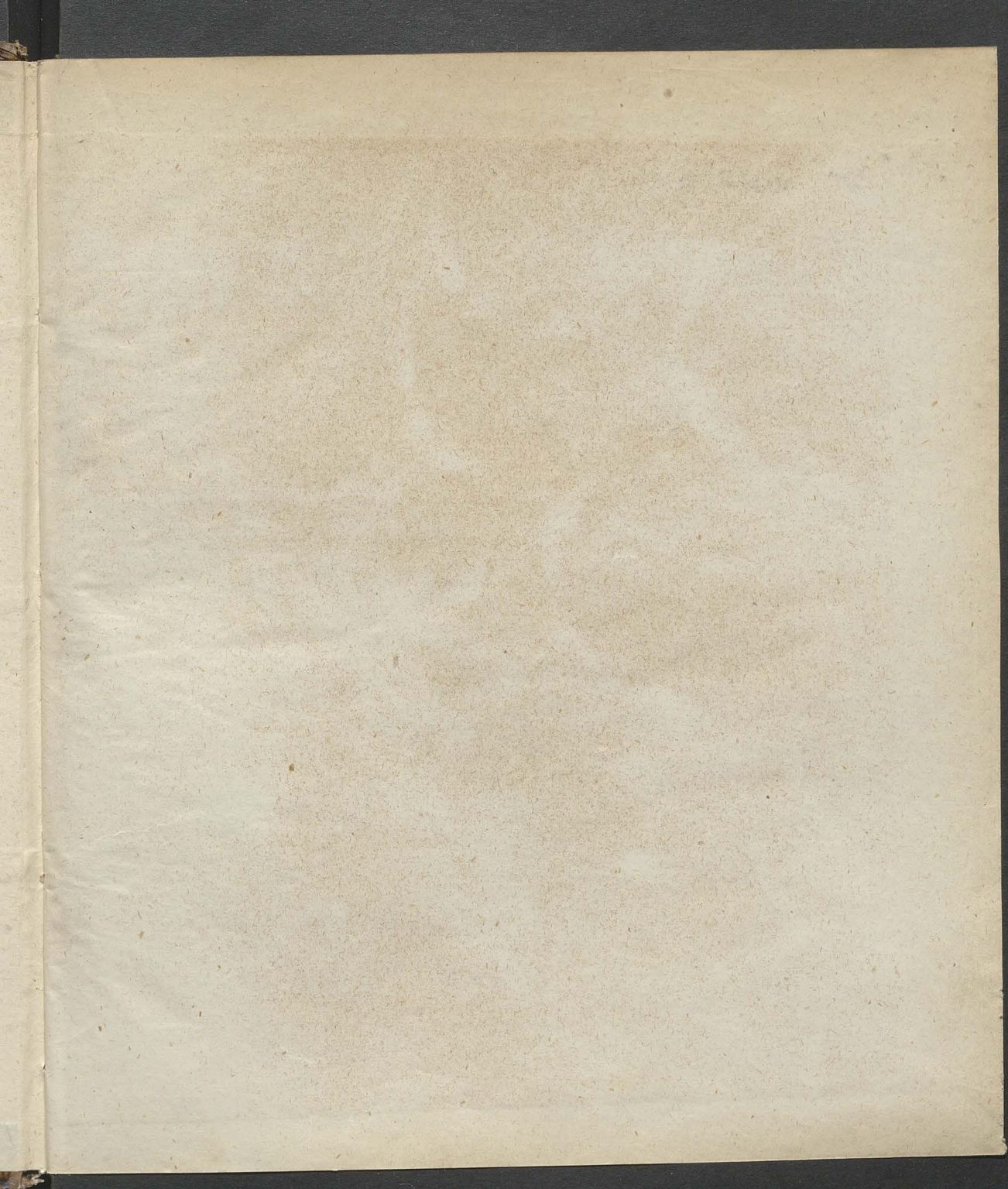
pract.

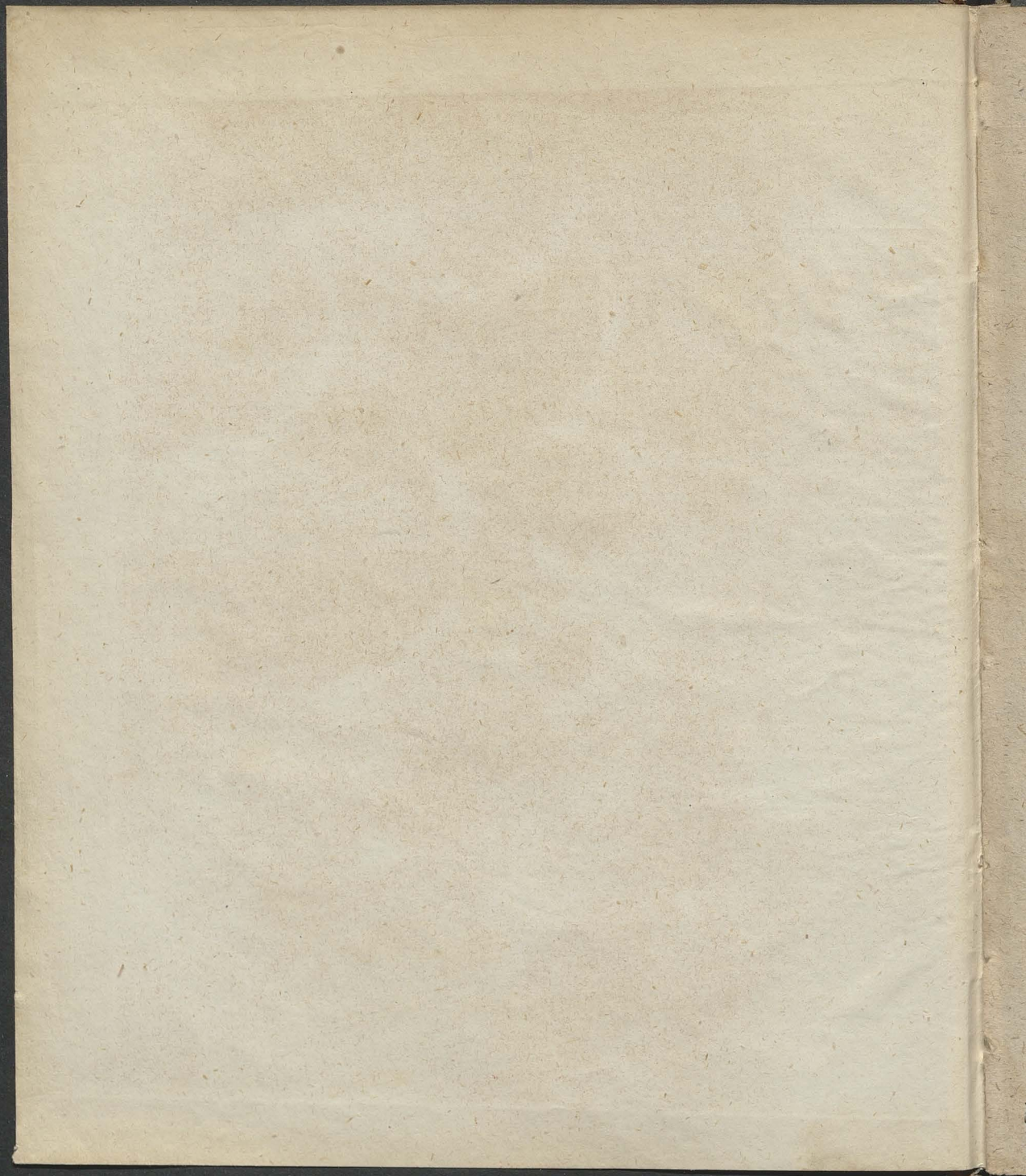
A 319

Banus

A 319

Mus. ant. pract. A 319





Erster Theil.

Neuer Lieblicher vnd Zierlicher INTRADEN,
mit sechs Stimmen.

Welche zu förderst auff
Geigen Lauten Instrumenten vnd Orgelwerck
gerichtet sind / darein zugleich eine ChoralStimm aus dem
Gesangbuch des Herrn D. Martini Lutheri ganz
zierlich / deutlich vnd vernehmlich von Jederman
kan mit gesungen werden / oder also das wen
fünff Personen solche geigen vnter dens
selben einer bedoraus der Bassist
die Choralstim singen kan.
componirt

Durch

MICHAELEM ALTENBURGIUM
Tröchterb. Pastorem.

BASSVS.

Gedruckt zu Erfurdt / bey vnd in Ver-
legung Johan Köbock.

M. DC. XX.
Bibl. Regia
Berolin.

Handwritten text at the top of the page, likely a title or header, appearing as a mirror image.

Middle section of handwritten text, appearing as a mirror image.

Section of handwritten text, appearing as a mirror image.

Section of handwritten text, appearing as a mirror image.

Section of handwritten text, appearing as a mirror image.

Section of handwritten text, appearing as a mirror image.



Handwritten text below the stamp, appearing as a mirror image.

MICHAEL ALTMANN
Tischschreiber

Bas 272

Handwritten text at the bottom of the page, appearing as a mirror image.



1.

Bassus.

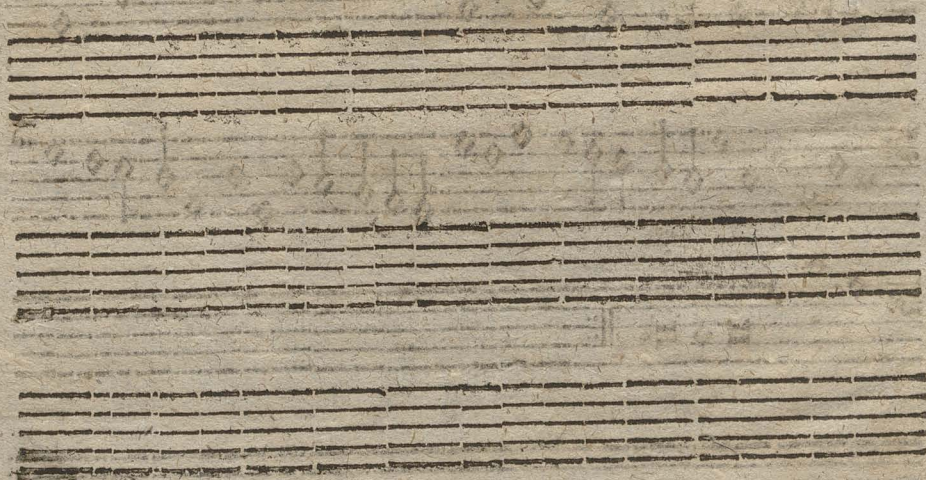
Intrada.

26. voc.

2



O Gott der Herr nicht bey uns helt/te.



M

G II

M

Du lob mein Seel den Herren/oc.

113

Vater

III.

Bassus.

Intrada.

a 6. voc.



Ater vnser im Himmel reich/c.

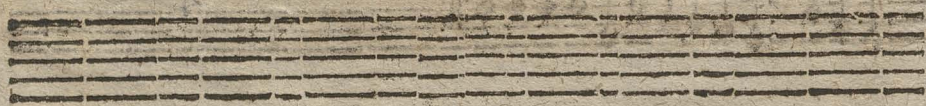
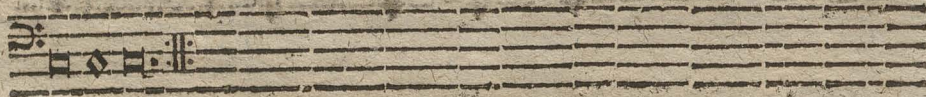


G III

D HER

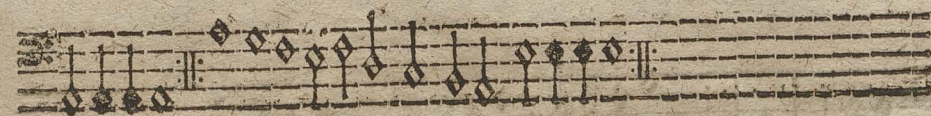


Herr Gott dein Göttlich Wort/






Gh Gott von Himmel sich darein/



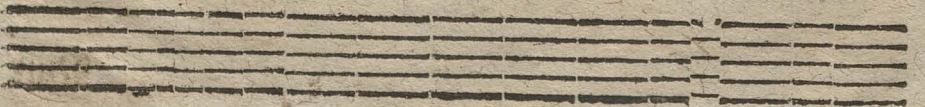

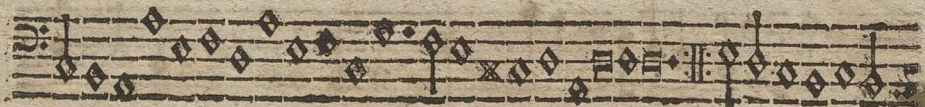
Am

Ab



W

On höret zu ihr Christenleut/te.



Du Gott wil ich nicht lassen/
Musical notation on a five-line staff with a treble clef and a common time signature. The melody begins with a large, ornate initial 'D'.

Musical notation on a five-line staff, continuing the melody from the previous staff.

Musical notation on a five-line staff, continuing the melody.

Musical notation on a five-line staff, continuing the melody.

Musical notation on a five-line staff, continuing the melody.

Musical notation on a five-line staff, continuing the melody.

Four empty musical staves, indicating the end of the piece.

5

Warumb

Arumb betrübſtu dich mein Herz!

Nun

IX. Musicalische Freude.

a 6. Voc.

B Du laßt uns Gott den Herren/

Mun

Hu

Es

X. Bassus. Intrada a 6. voc.



Sprecht der unweisen Mund wol/xc.



Alles



Mein Gott in der Höh sey Ehr/te.



[Faint, illegible text, likely bleed-through from the reverse side of the page.]

XII.

Bassus.

Intrada.

26. voc.

In feste Burg ist unser Gott/

Gott



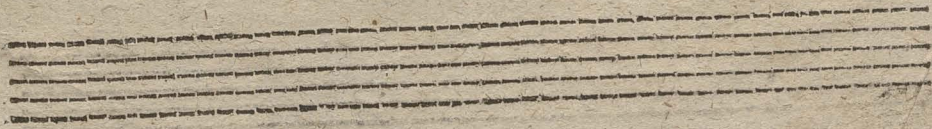
Derher Vater wohn vns bey/



ott

G Mich hab ich gehoffet Herr!

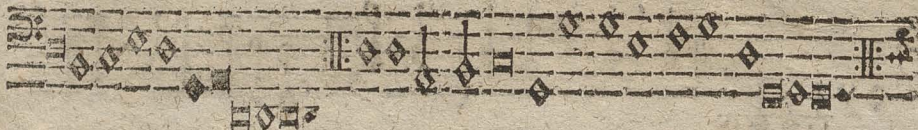
L Ist und Meid/re.



P Ist und Meid/



The first staff of music begins with a treble clef and a 3/2 time signature. It contains a series of diamond-shaped notes, some with stems, and rests. The notes are arranged in a sequence that suggests a specific melodic line.



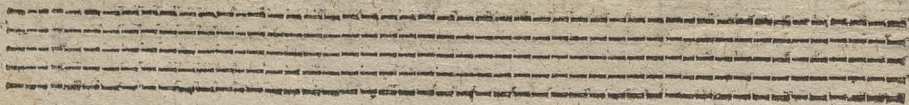
The second staff of music continues the melodic line with diamond-shaped notes and rests. It features a repeat sign (double bar line with dots) and ends with a double bar line.



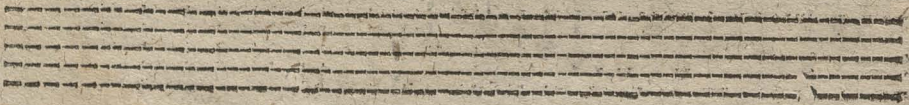
The third staff of music continues the melodic line with diamond-shaped notes and rests. It features a repeat sign and ends with a double bar line.



The fourth staff of music continues the melodic line with diamond-shaped notes and rests. It features a repeat sign and ends with a double bar line.



Five empty musical staves.



Five empty musical staves.



Five empty musical staves.

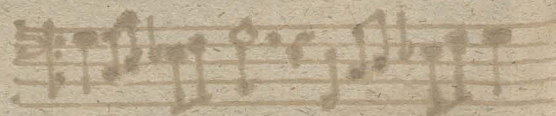
Faint, illegible text at the top of the page, possibly bleed-through from the reverse side.

Faint, illegible text in the upper middle section of the page.

Faint, illegible text in the lower middle section of the page.

Faint, illegible text in the lower section of the page.

Faint, illegible text at the bottom of the page, possibly bleed-through from the reverse side.



miss. pract. sent.

