

Mus. ant.

pract.

570

*Violino I*



Mus. ant. pract.

G 70

13.

VIOLINO. I.



CANTIO=  
NES SACRÆ,

Unius, duarum, trium, & quatuor Vo-  
cum, cum Instrumentis, & Basso  
Continuo.

AUTHORE

LEONARDO SAILER,

Ulmenfi,

SERENISSIMI PRINCIPIS à BADEN  
& HOCHBERG, &c.

*Musico & Organista Aulico.*



VIOLINO. I.

BASILEAE,

---

Typis JOHANN. CONRADI à MEHEL.  
Anno M. DC. XCVI.



I N D E X.

- I. *Volate caelitus*, Canto & 2. Violin.
- II. *Ave Jesu Christe*, C. C. B. 2. Violin.
- III. *Quicumque amat te*, C. C. 2. Violin.
- IV. *Ad Cantus ad Sonos*, C. A. B. 2. Violin.
- V. *Eamus*, à 4. Voc. 4. Instr.
- VI. *O Jesu mi*, Alto, 4 Instrum.
- VII. *O! anima mea*, A. T. B. 3. Instrum.
- VIII. *Ad mensam superum, ad panem caelicum*, A. T. B. 2. VV.
- IX. *O! caeli beati*, A. T. B. 2. VV.
- X. *Durum Cor*, A. T. B. 2. VV.
- XI. *Valete*, A. T. B. 2. VV.
- XII. *Nolite timere*, A. T. B. 3. Instrum.
- XIII. *Das neugebohrne Kindelein*, A. T. B. VV.
- XIV. *O! Cor meum*, A. T. 3. Instrum.
- XV. *O! anima miseranda*, Tenore solo. VV.
- XVI. *Anima mea*, Basso solo, 2. VV.

E R R A T A.

fol. 1. syst. 5.    fol. 6. syst. 5.    fol. 6. syst. 10.

Errata, 

Sic corrigantur. 

fol. 8. syst. 7.    fol. 25. syst. 5. fol. 26. syst. 5. fol. 27. syst. 4.




I.

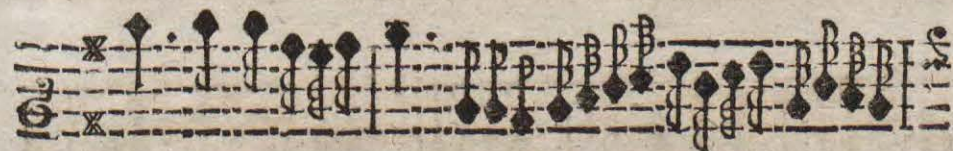
Violino I.



Volate,

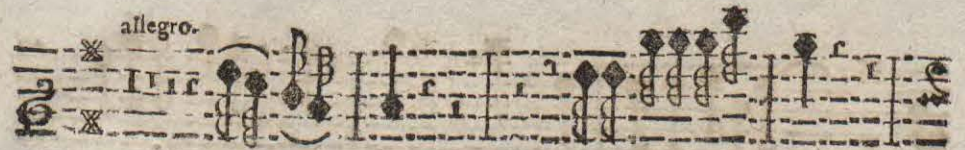
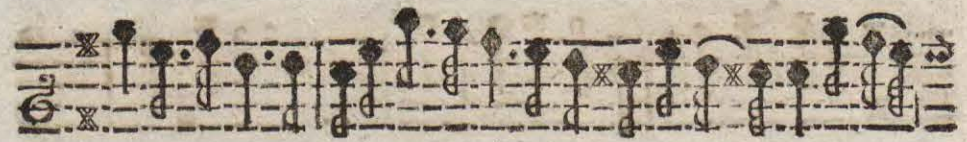
B b





Bb 2









Alleluja.

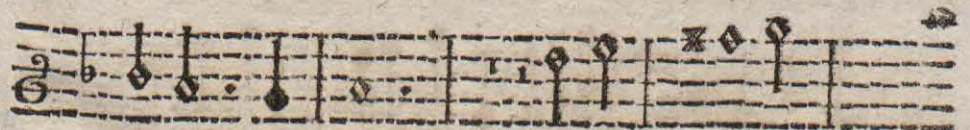


II.

Violino I.



Sinfonia.







Ave.



Sonate piano.



Ritor.

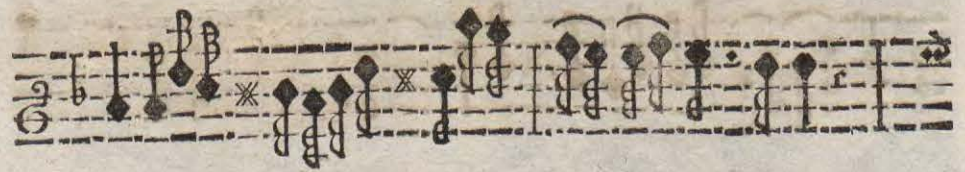


C 2.



C c









III.

Violino I.



Sinfonia.



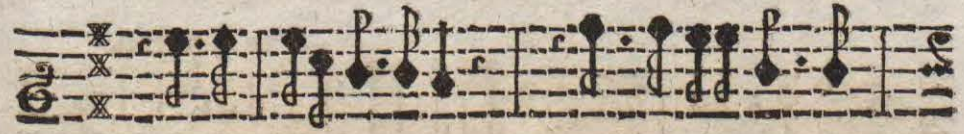
Quicumque amat te.



piano.



adagio.



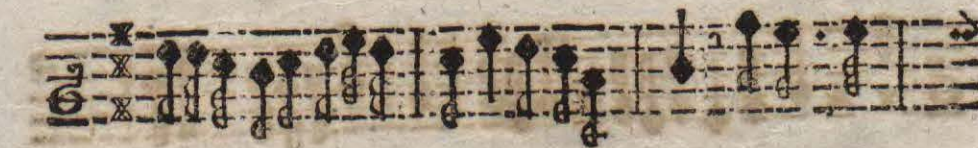
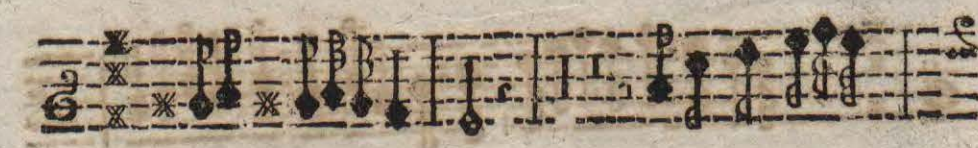








Alleluja.



IV.

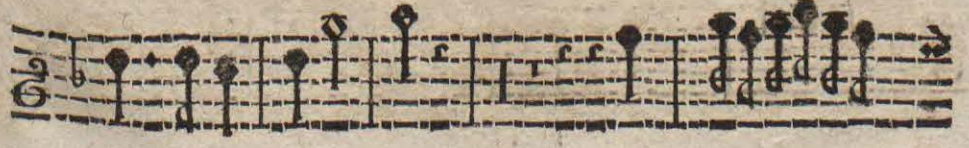
Violino I.



Sinfon.

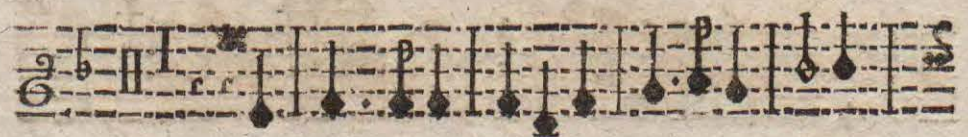


Ad sonos.



D a









Alleluja.

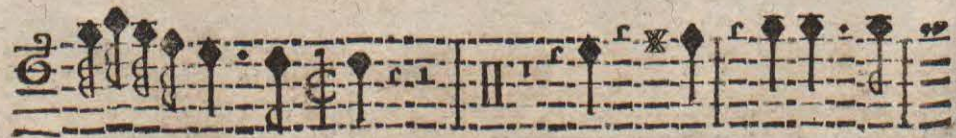






V.

Violino I.



Eamus.





The left page of the manuscript contains seven staves of handwritten musical notation. Each staff begins with a treble clef and a common time signature (C). The notation is dense, featuring a variety of note values including minims, crotchets, and quavers, along with rests and accidentals. The ink is dark and the paper shows signs of age and wear, particularly at the bottom edge.

The right page of the manuscript contains eight staves of handwritten musical notation. The notation continues from the left page, maintaining the same style of treble clef and common time. The final staff on this page includes a key signature change to E major, indicated by a sharp sign on the F line. The handwriting is consistent with the left page, and the paper shows some staining and wear.





VI.

Violino. I.



Sinf.



O! Jesu mi.



Ec 2





Ritor.



Mens tui.



Sinf.







O! Jesu mi.



VII.

Violino I.







O anima,



FI





F f 2





VIII.

Violino I.



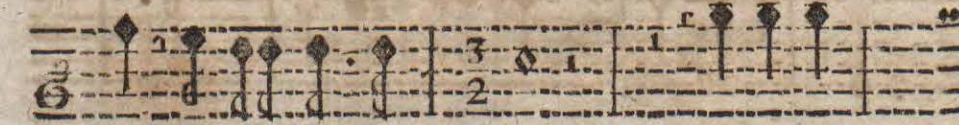
Sinf.



Ad mensura.







IX.

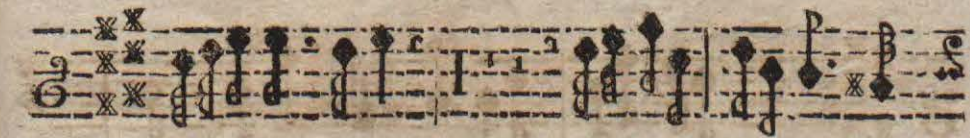
Violino. I.



O celi beati.















Alleluja.



adagio



X.

Violino I.



Sinfon.



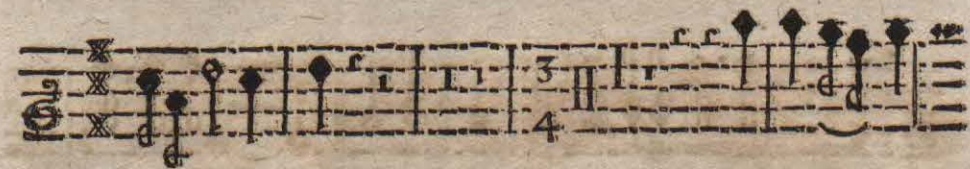
Durum Cor.







Violino I







XI.

Violino. I.



Sinfonia.



Valete.



H h









XII.

Violino I.



Nolite timere.







Aria, Ritor.



piano.

Repetat. bis.



Seven staves of handwritten musical notation on the left page. The notation is in a single system, likely for a single instrument or voice. It features a treble clef, a 3/4 time signature, and various rhythmic values including eighth and sixteenth notes, rests, and accidentals. The paper shows signs of age and wear.



XIII.

Violino. I.

Seven staves of handwritten musical notation on the right page, labeled 'Violino. I.' and 'Sinfon.'. The notation is in a single system, likely for a violin. It features a treble clef, a 3/4 time signature, and various rhythmic values including eighth and sixteenth notes, rests, and accidentals. The paper shows signs of age and wear.





Sinf.







Sinf.



Alla brevè.



XIV.

Violino I.



Sinfon.



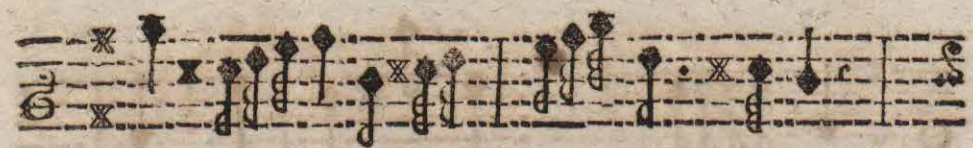




O Cor meum.







XV.

Violino I.



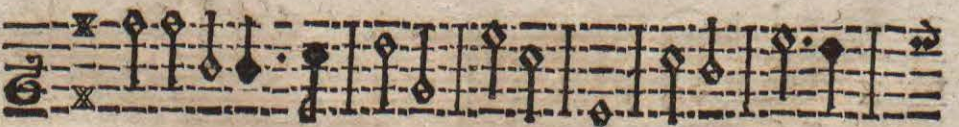
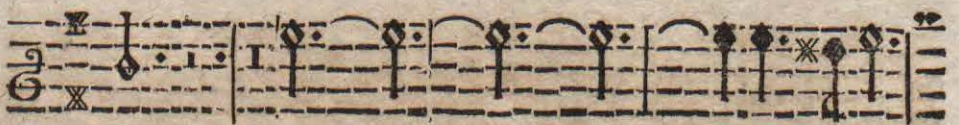
Sinfon.

K k





O anima miseranda.







XVI.

Violino. I.



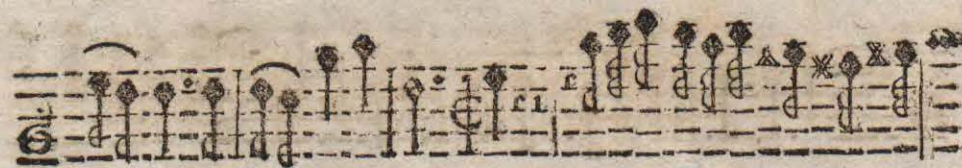
allegro.



adag.







Aria.







3. Straffa.



Amen.

F I N I S.



Mus. - proct. ant.



