

Mus. ms.

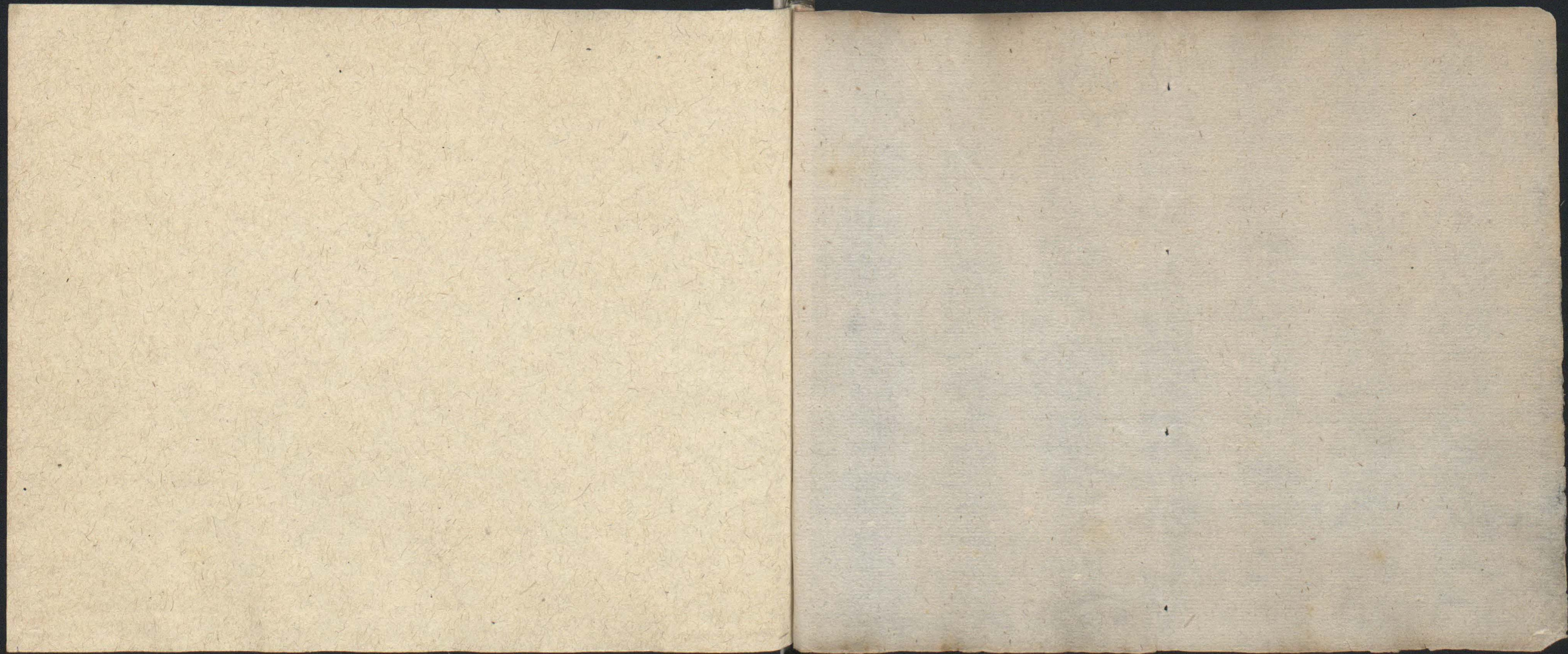
40293

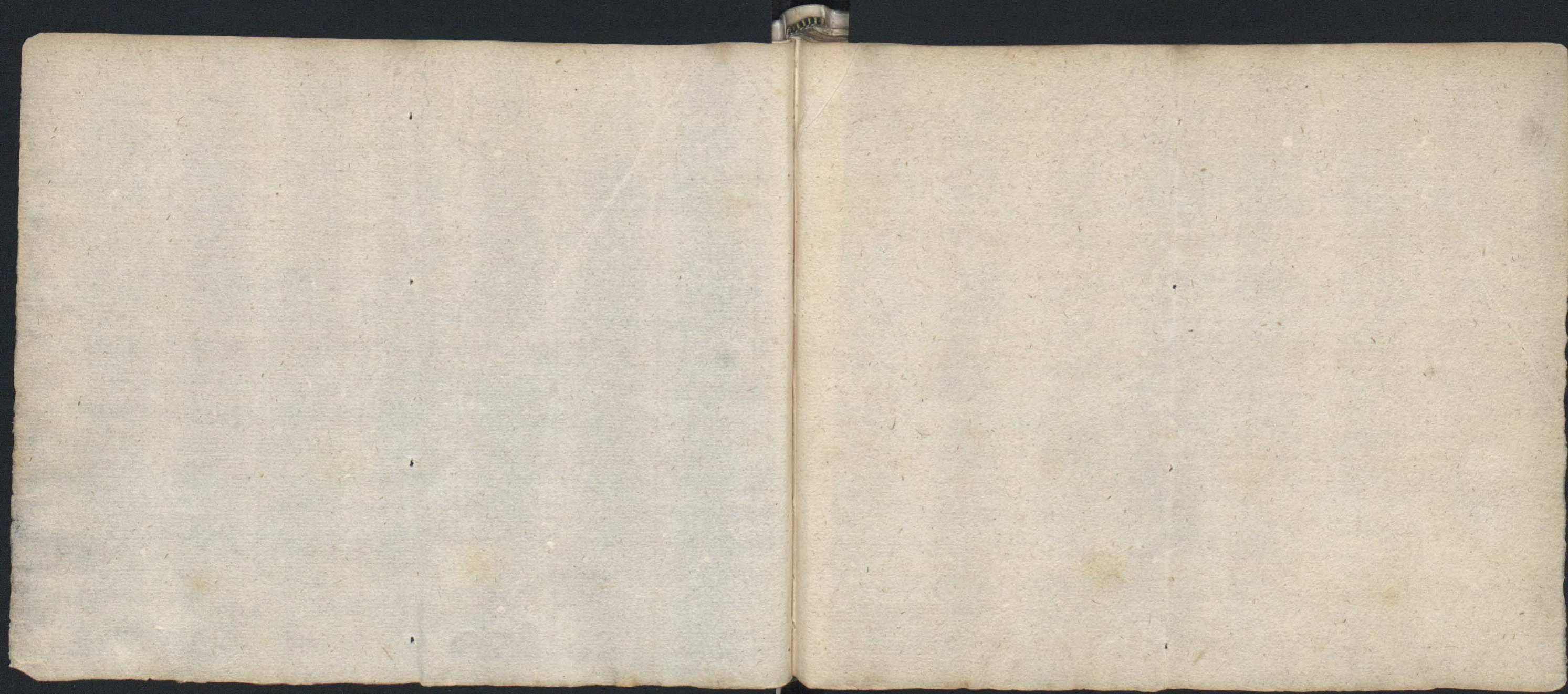
ze

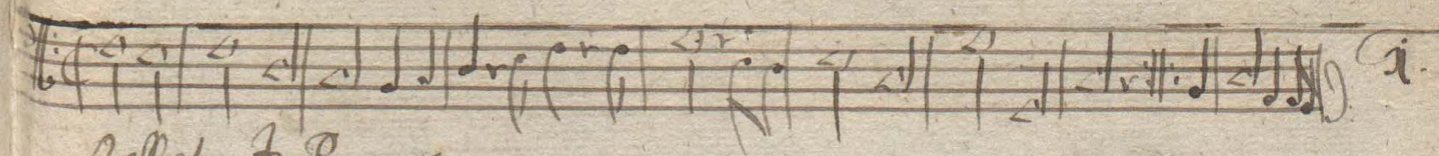
h.

us

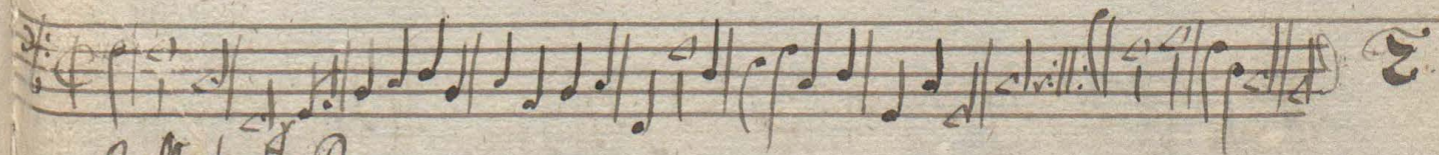
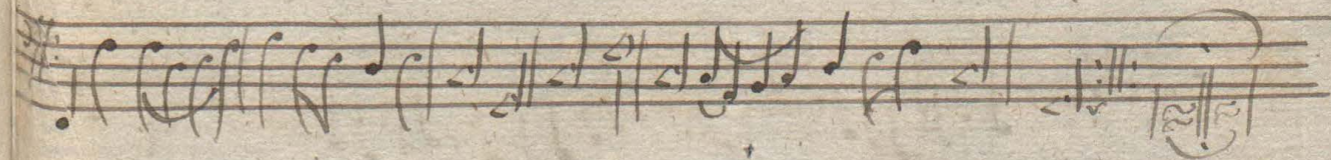
Mms. ms. 40 293



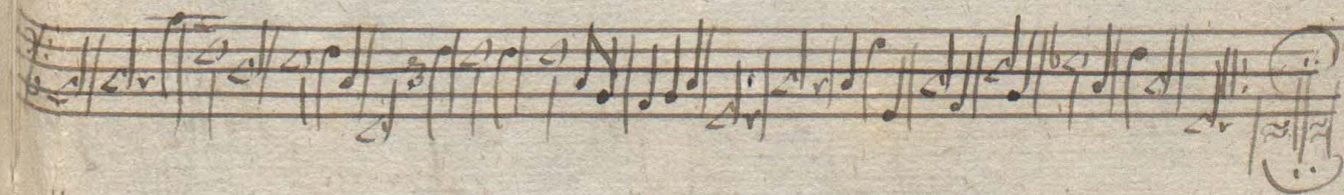




Ballet. F.R.



Ballet. F.R.



Courant.

Staatsbibliothek
Musikabteilung
Berlin

4. Courant.

5. Allemanda F.R.

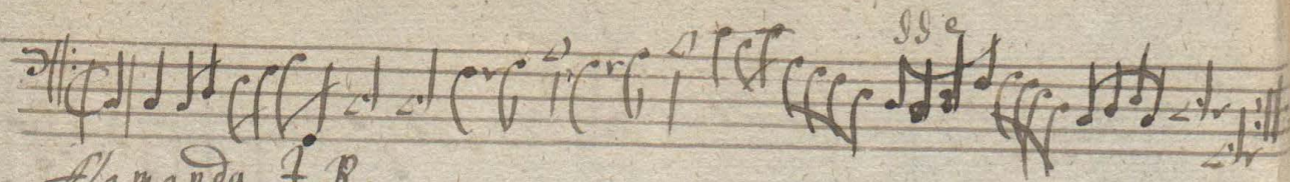
6. Courant.

Allemanda Biscioni Agostini da 18. Sarabanda.

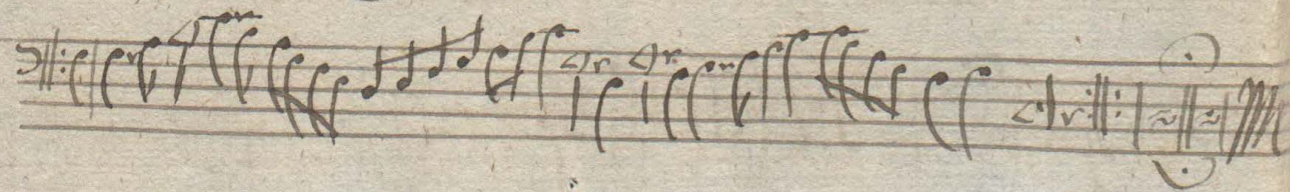
8. Rauffigal.

9. Sarabanda

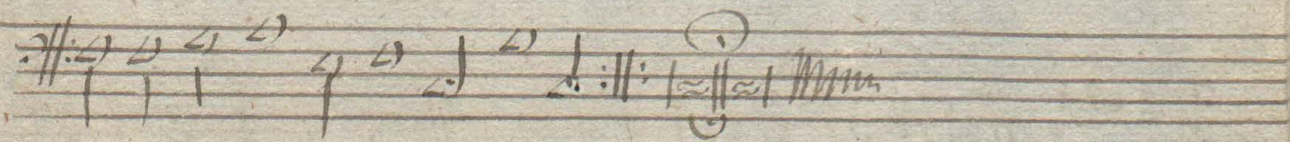
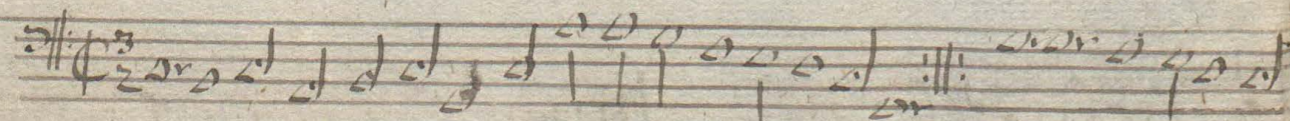
10.



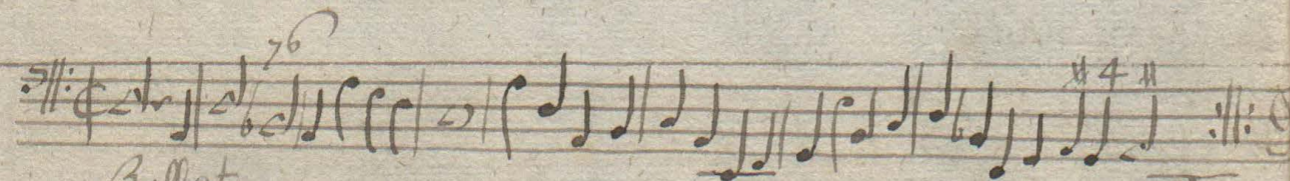
Alamanda F.R.



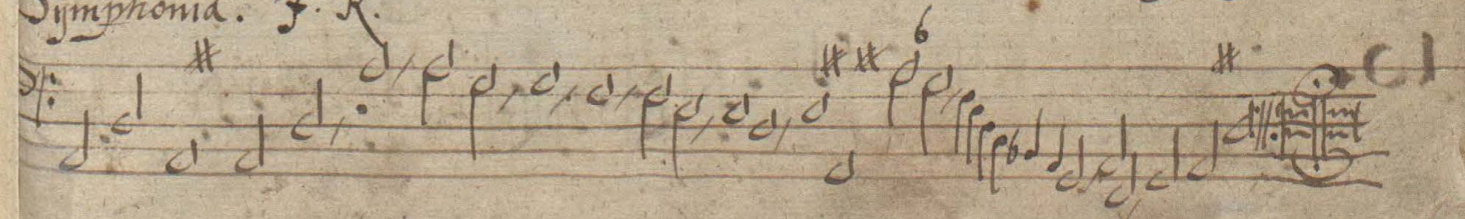
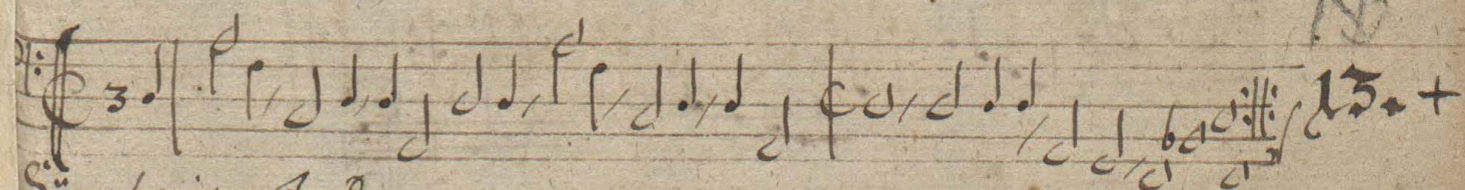
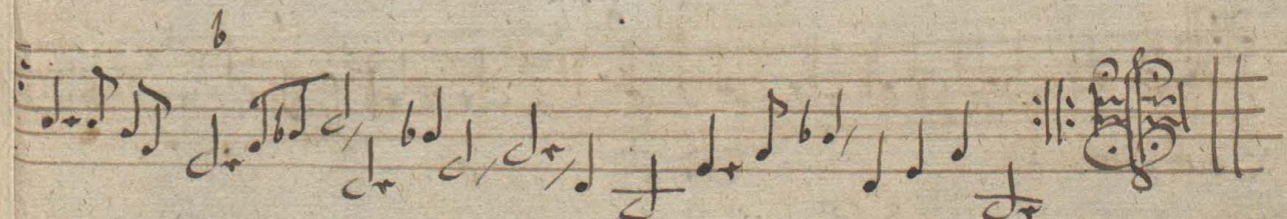
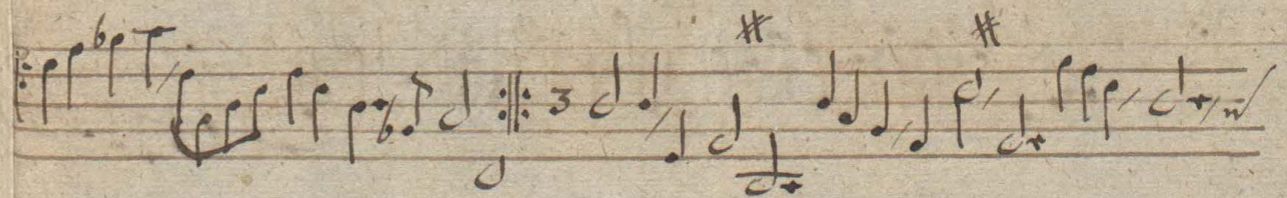
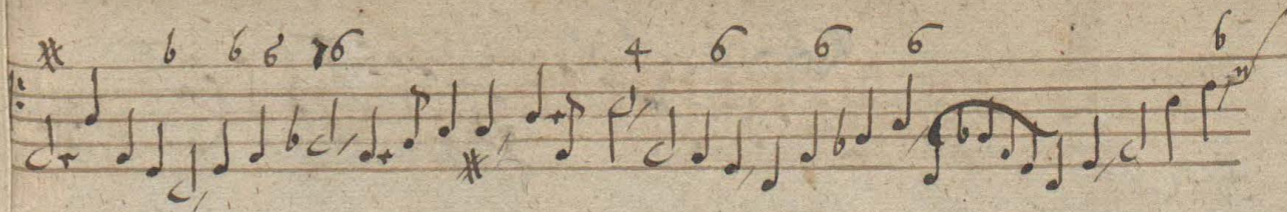
11.



12.



Ballet.



Symphonia. F.R.

14. +

Aria.

15.

Courant.

16.

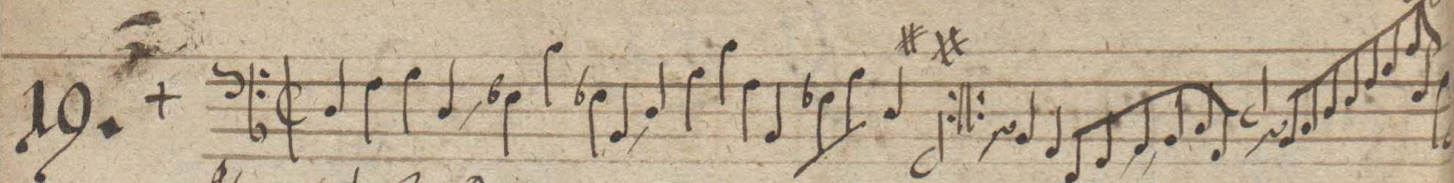
Alemanda.

17.

Sarabanda


18. +

Aria

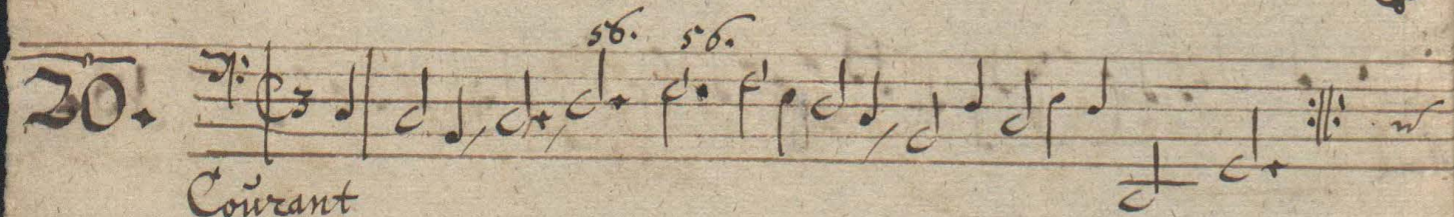
19. + 

Alemand 3. R.

N3

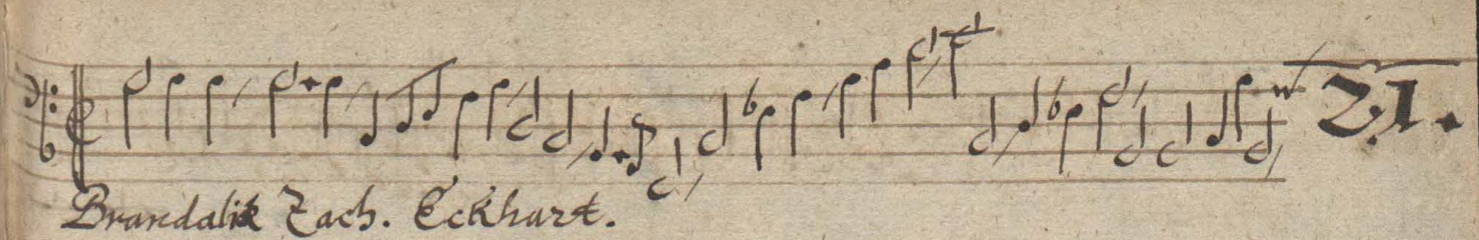




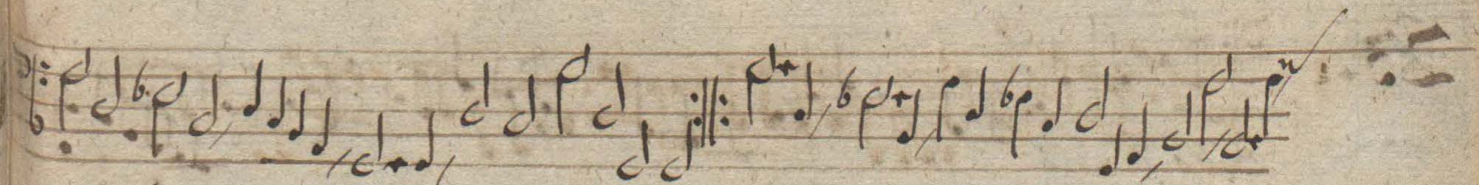
20. 

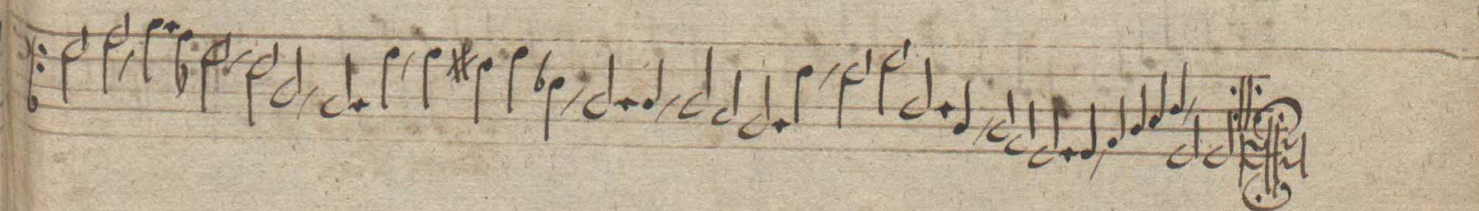
Courant

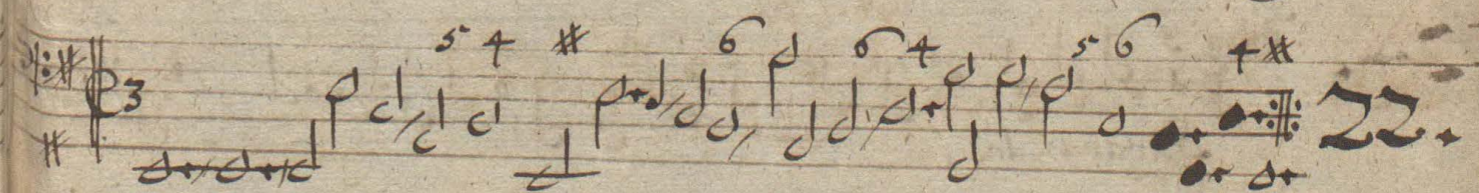


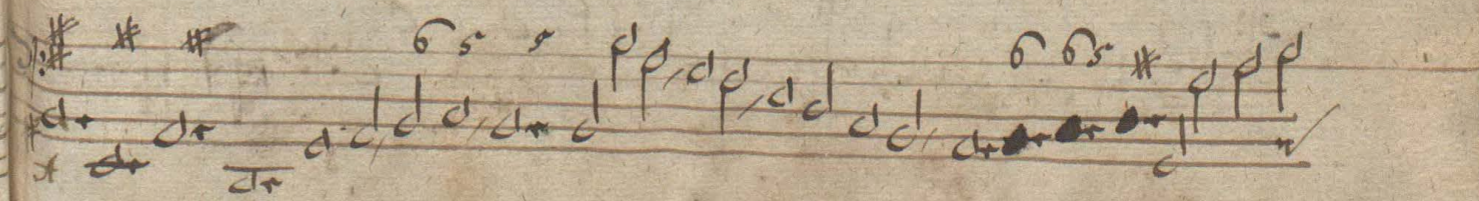


Brandalik Zach. Eckhart.





22. 



1. # + # 4

23. *Ballo*

24. *Sarabanda.*

25.

Ballo
F.R.

Montizande 26.

27.

Brandel. J. Rosenmüller

Handwritten musical notation on a single staff, featuring a treble clef, a key signature of one sharp (F#), and a common time signature (C). The piece concludes with a double bar line and repeat signs.

Handwritten musical notation on a single staff, featuring a treble clef, a key signature of one sharp (F#), and a common time signature (C). The piece concludes with a double bar line and repeat signs.

28. *Garolte*
Handwritten musical notation on a single staff, featuring a treble clef, a key signature of one sharp (F#), and a common time signature (C). The piece concludes with a double bar line and repeat signs.

Handwritten musical notation on a single staff, featuring a treble clef, a key signature of one sharp (F#), and a common time signature (C). The piece concludes with a double bar line and repeat signs.

Handwritten musical notation on a single staff, featuring a treble clef, a key signature of one sharp (F#), and a common time signature (C). The piece concludes with a double bar line and repeat signs.

Handwritten musical notation on a single staff, featuring a treble clef, a key signature of one sharp (F#), and a common time signature (C). The piece concludes with a double bar line and repeat signs.

29. + *Ballet F. R.*
Handwritten musical notation on a single staff, featuring a treble clef, a key signature of one sharp (F#), and a common time signature (C). The piece concludes with a double bar line and repeat signs.

Handwritten musical notation on a single staff, featuring a treble clef, a key signature of one sharp (F#), and a common time signature (C). The piece concludes with a double bar line and repeat signs.

30. + *Courant F. R.*
Handwritten musical notation on a single staff, featuring a treble clef, a key signature of one sharp (F#), and a common time signature (C). The piece concludes with a double bar line and repeat signs.

Handwritten musical notation on a single staff, featuring a treble clef, a key signature of one sharp (F#), and a common time signature (C). The piece concludes with a double bar line and repeat signs.

Handwritten musical notation on a single staff, featuring a treble clef, a key signature of one sharp (F#), and a common time signature (C). The notation includes various note values and rests, ending with a double bar line and repeat dots.

34. Handwritten musical notation on a single staff, featuring a treble clef, a key signature of one sharp (F#), and a common time signature (C). The notation includes various note values and rests, ending with a double bar line and repeat dots. The word "Ballet." is written below the staff.

Handwritten musical notation on a single staff, featuring a treble clef, a key signature of one sharp (F#), and a common time signature (C). The notation includes various note values and rests, ending with a double bar line and repeat dots.

35 Handwritten musical notation on a single staff, featuring a treble clef, a key signature of one sharp (F#), and a common time signature (C). The notation includes various note values and rests, ending with a double bar line and repeat dots. The word "Saraband." is written below the staff.

Handwritten musical notation on a single staff, featuring a treble clef, a key signature of one sharp (F#), and a common time signature (C). The notation includes various note values and rests, ending with a double bar line and repeat dots.

Handwritten musical notation on a single staff, featuring a treble clef, a key signature of one sharp (F#), and a common time signature (C). The notation includes various note values and rests, ending with a double bar line and repeat dots. The number "36." is written at the end of the staff.

Ballet J.R.

Handwritten musical notation on a single staff, featuring a treble clef, a key signature of one sharp (F#), and a common time signature (C). The notation includes various note values and rests, ending with a double bar line and repeat dots.

Handwritten musical notation on a single staff, featuring a treble clef, a key signature of one sharp (F#), and a common time signature (C). The notation includes various note values and rests, ending with a double bar line and repeat dots. The word "Courant" is written below the staff. The number "37." is written at the end of the staff.

Handwritten musical notation on a single staff, featuring a treble clef, a key signature of one sharp (F#), and a common time signature (C). The notation includes various note values and rests, ending with a double bar line and repeat dots.

Handwritten musical notation on a single staff, featuring a treble clef, a key signature of one sharp (F#), and a common time signature (C). The notation includes various note values and rests, ending with a double bar line and repeat dots. The word "Allemand J.R." is written below the staff. The number "38." is written at the end of the staff.

28

39

Almand

40

Sarabanda

41

Saraband F. R.

42

Sarabanda F. R.

43

Ballet

44.

Ballet.

45.

Ballet

46.

Courant

47.

Courant



48.

Ballet

49.

Sarabanda

50.

Brandel de Mos. Const.

84

51. +

Garotte.

54.

Courant.

52.

Courant.

54.

53.

55.

Eser.

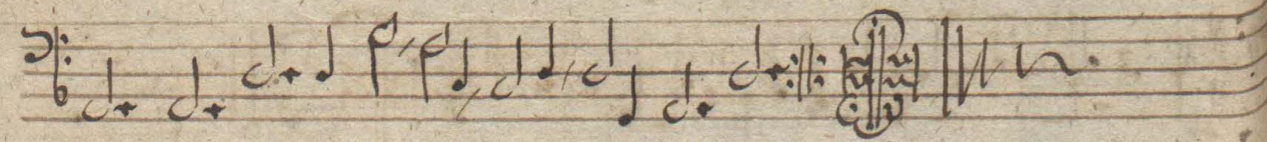
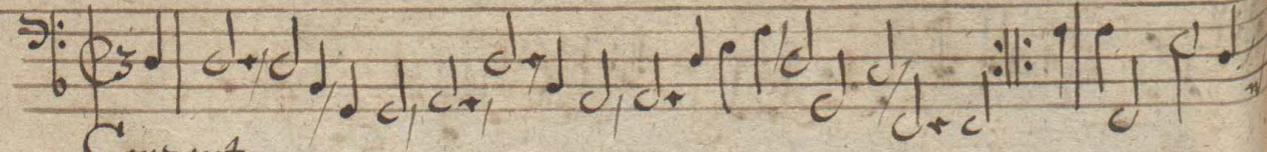
53.

Courant.

55.

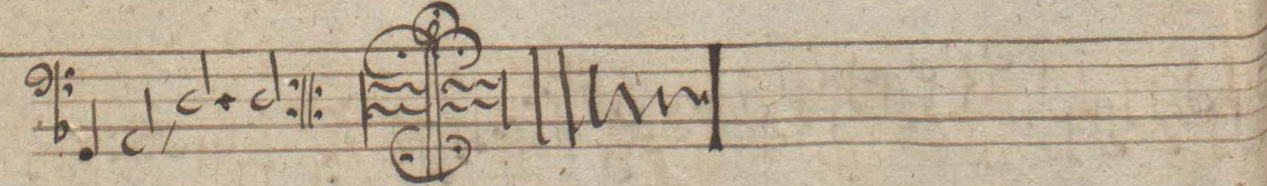
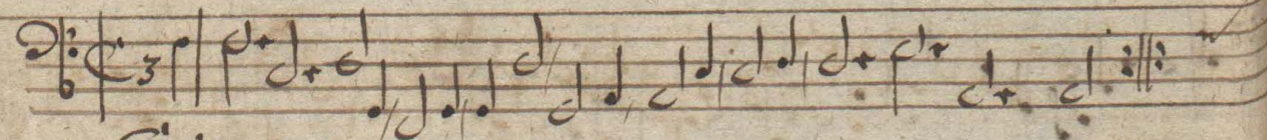
56.

Courant



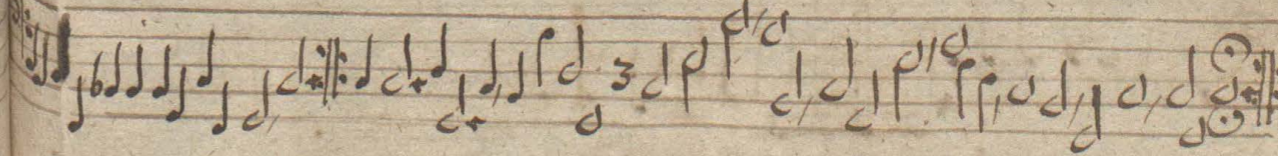
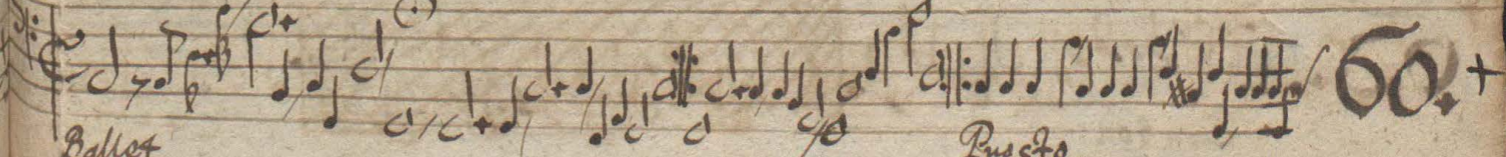
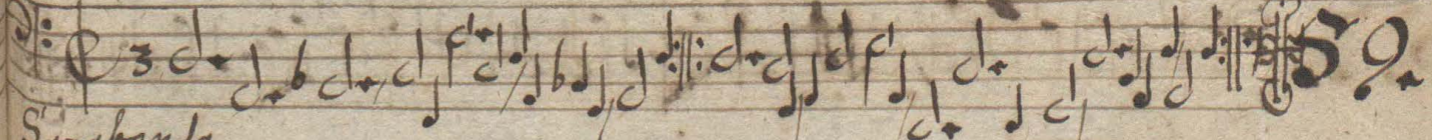
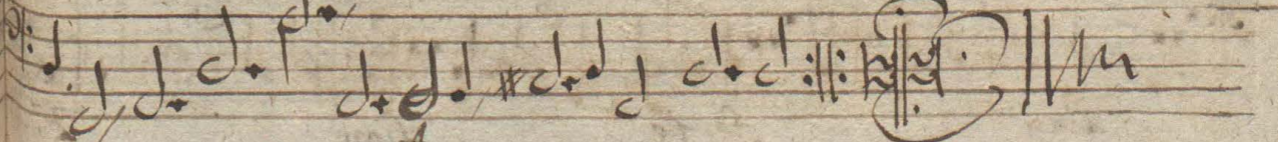
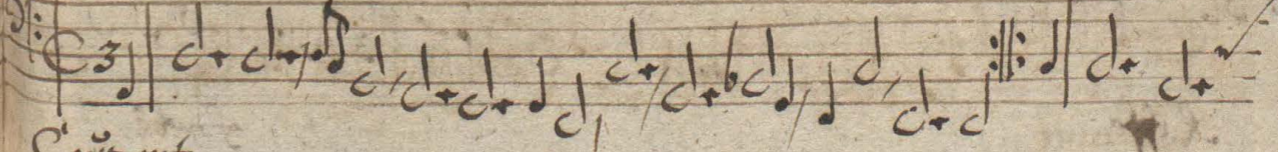
57.

Courant.



58.

Courant



61. + *Raffe.* *forte*

Pian *forte* *Pian* *forte*

Pian *forte* *Pian*

62. + *Canzon*

Ballet 63.

Courant. 64.

Courant. 65.

65.

66. Ballet

67.

68.

69. Ballet

68. Courant.

69.

69. Courant.

70.

70. Ballet

Handwritten musical notation on a single staff, featuring a treble clef and a key signature of one sharp (F#). The piece concludes with a double bar line and repeat signs.

71. *Courante 2.*
Handwritten musical notation on a single staff, featuring a treble clef and a key signature of one sharp (F#). The piece concludes with a double bar line and repeat signs.

Handwritten musical notation on a single staff, featuring a treble clef and a key signature of one sharp (F#). The piece concludes with a double bar line and repeat signs.

72. *Ballet*
Handwritten musical notation on a single staff, featuring a treble clef and a key signature of one sharp (F#). The piece concludes with a double bar line and repeat signs.

Handwritten musical notation on a single staff, featuring a treble clef and a key signature of one sharp (F#). The piece concludes with a double bar line and repeat signs.

Courant
Handwritten musical notation on a single staff, featuring a treble clef and a key signature of one sharp (F#). The piece concludes with a double bar line and repeat signs.

Ballet
Handwritten musical notation on a single staff, featuring a treble clef and a key signature of one sharp (F#). The piece concludes with a double bar line and repeat signs.

Saraband
Handwritten musical notation on a single staff, featuring a treble clef and a key signature of one sharp (F#). The piece concludes with a double bar line and repeat signs.

Alamand
Handwritten musical notation on a single staff, featuring a treble clef and a key signature of one sharp (F#). The piece concludes with a double bar line and repeat signs.

Handwritten musical notation on a single staff, featuring a treble clef and a key signature of one sharp (F#). The piece concludes with a double bar line and repeat signs.

77

Courant.

77

78

Almand. f. R.

78

79

Ballet

78

80

Ballet f. R.

81

Sarabanda.

82

Courant.

82

83.

Alemanda

83.

84.

Alemand

84.

85.

Aria ganz Langsam

Ballet Adagio. Presto.

Sarabanda

Sarabanda. oder sehr Ballet.

83.

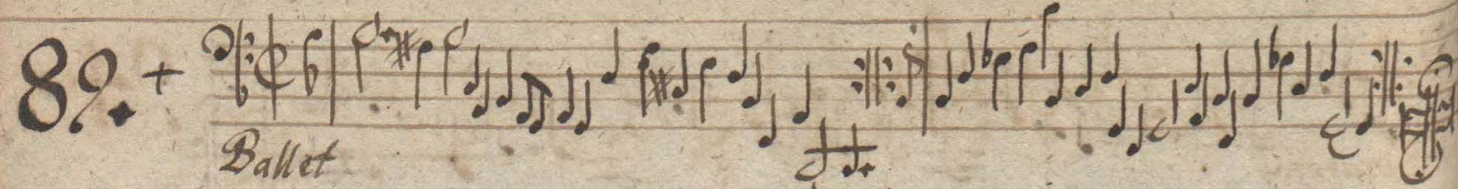
86.

87.

87.

88.

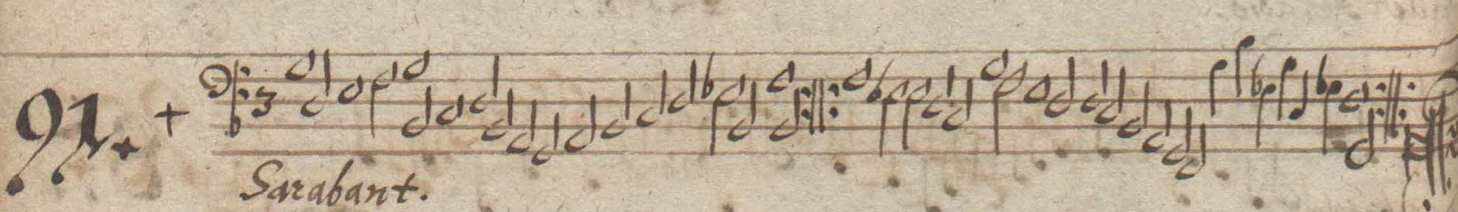
89. + *Ballet*



90. + *Courant*



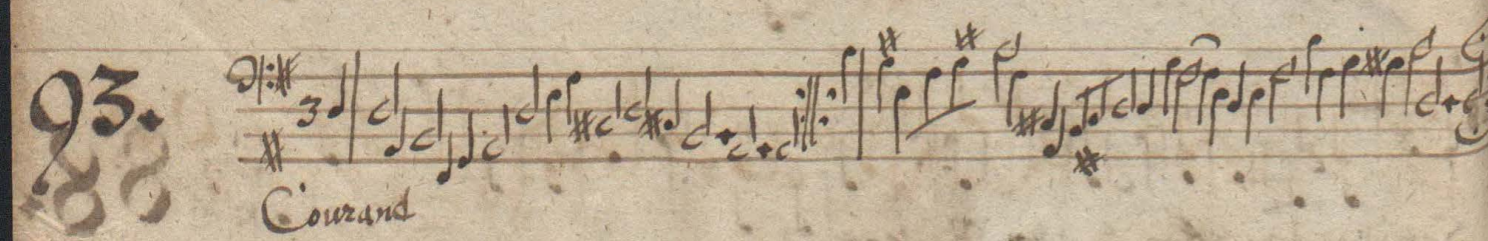
91. + *Saraband.*



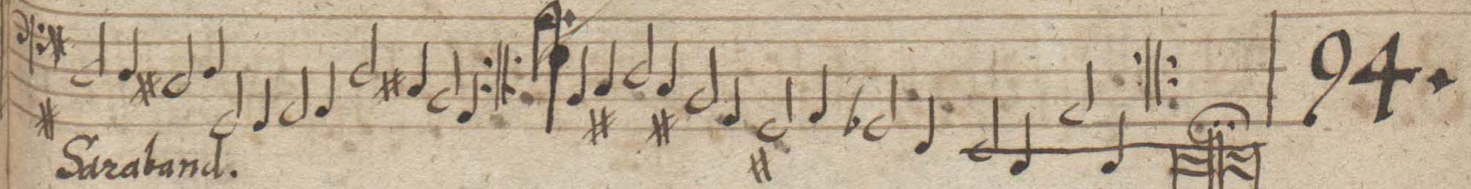
92. *Amanda*



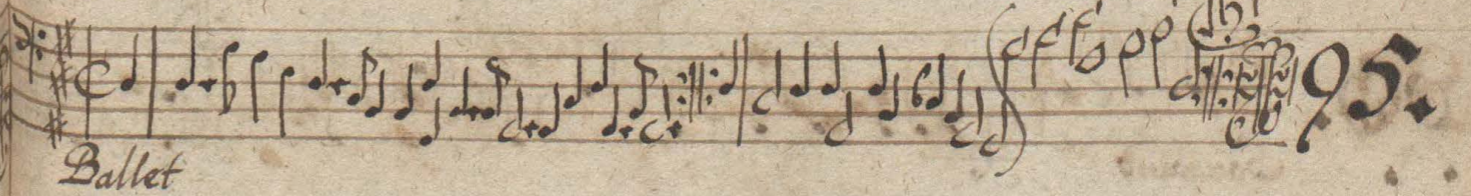
93. *Courant*



Saraband. 94.



Ballet 95.



Courant. 96.

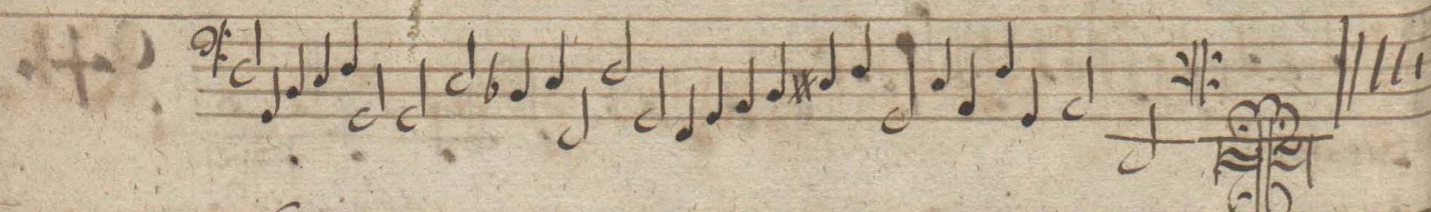


Saraband 97.

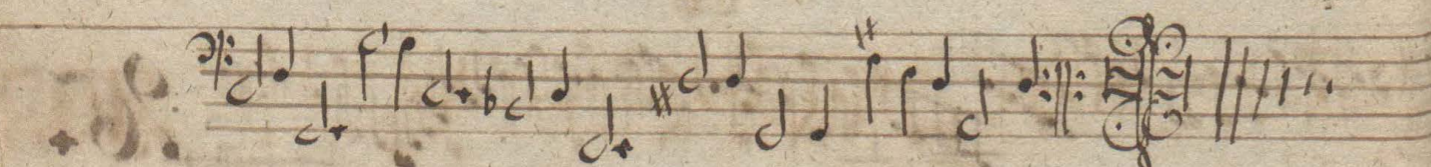


Ballet 98.

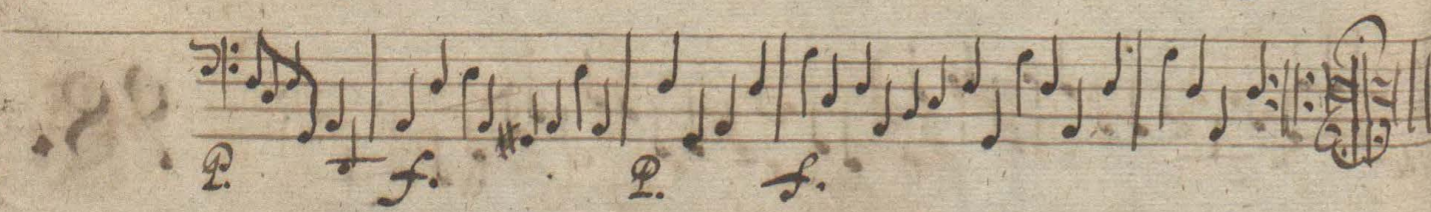


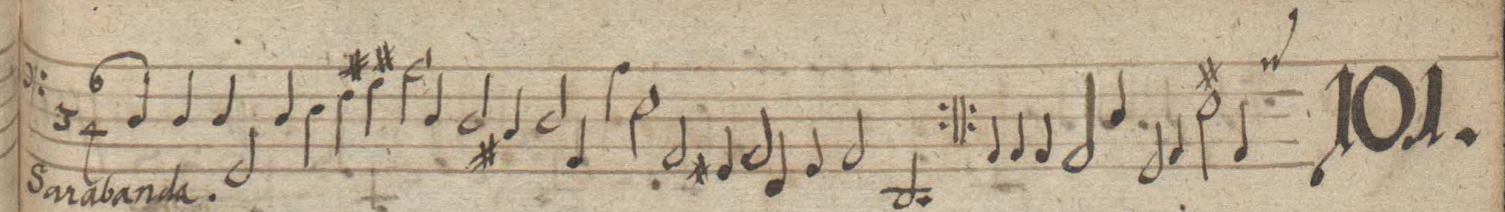
98.  Musical notation for piece 98, first system. The staff contains a single line of music with a treble clef, a key signature of one sharp (F#), and a common time signature (C). The piece concludes with a double bar line and repeat signs.

99. *Sarabanda*  Musical notation for piece 99, first system. The staff contains a single line of music with a treble clef, a key signature of one sharp (F#), and a common time signature (C). The piece concludes with a double bar line and repeat signs.

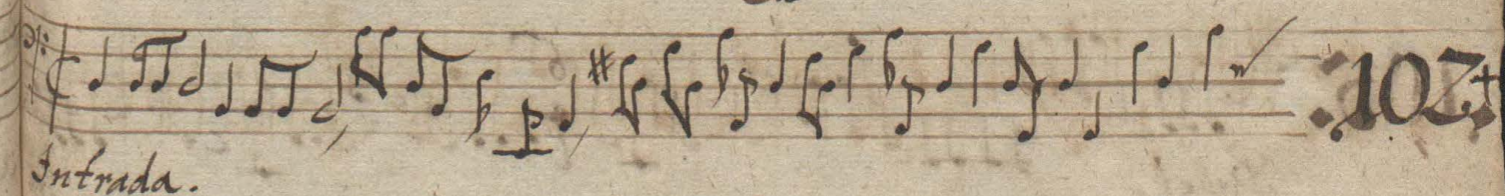
 Musical notation for piece 99, second system. The staff contains a single line of music with a treble clef, a key signature of one sharp (F#), and a common time signature (C). The piece concludes with a double bar line and repeat signs.

100. *Ballet forte*  Musical notation for piece 100, first system. The staff contains a single line of music with a treble clef, a key signature of one sharp (F#), and a common time signature (C). The piece includes dynamic markings such as *p*, *f*, and *f#*. It concludes with a double bar line and repeat signs.

 Musical notation for piece 100, second system. The staff contains a single line of music with a treble clef, a key signature of one sharp (F#), and a common time signature (C). The piece includes dynamic markings such as *p* and *f*. It concludes with a double bar line and repeat signs.

 Musical notation for piece 101, first system. The staff contains a single line of music with a treble clef, a key signature of two sharps (F# and C#), and a common time signature (C). The piece concludes with a double bar line and repeat signs.

Sarabanda.  Musical notation for piece 101, second system. The staff contains a single line of music with a treble clef, a key signature of two sharps (F# and C#), and a common time signature (C). The piece concludes with a double bar line and repeat signs.

 Musical notation for piece 102, first system. The staff contains a single line of music with a treble clef, a key signature of one sharp (F#), and a common time signature (C). The piece concludes with a double bar line and repeat signs.

Intrada.  Musical notation for piece 102, second system. The staff contains a single line of music with a treble clef, a key signature of one sharp (F#), and a common time signature (C). The piece concludes with a double bar line and repeat signs.

 Musical notation for piece 103, first system. The staff contains a single line of music with a treble clef, a key signature of two sharps (F# and C#), and a common time signature (C). The piece concludes with a double bar line and repeat signs.

Courant.  Musical notation for piece 103, second system. The staff contains a single line of music with a treble clef, a key signature of two sharps (F# and C#), and a common time signature (C). The piece concludes with a double bar line and repeat signs.

103.

104. *Saraband.*

105. *Ballet.*

106. *Sarabanda*

106. *Sarabanda*

107. *Ballet.*

108. *Sarabanda*

108. *Sarabanda*

109. *Ballet*

109.

110. *Sarabanda*

111. *Ballet*

112. *Sarabanda*

113. *Ballet*

114. *Sarabanda*

115. *Ballet*

116. *Sarabanda*

117.

Ballet.

118.

Sarabanda.

119.

Ballet.

120.

Sarabanda.

73 56

121.

Ballet.

Sarabanda.

122.

Ballet.

123.

Sarabanda.

124 Sarabanda

125 Ballet.

126 Sarabanda

127 Sarabanda

Intrada.

Piuv.

Sinfonia.

131.

Sarabanda.

132.

Alemarda.

133.

Courant.

134.

Ballet Presto

135.

Sarabanda.

Handwritten musical notation on a single staff, featuring a treble clef, a key signature of one sharp (F#), and a common time signature (C). The piece concludes with a double bar line and a repeat sign.

136. Ballet.

Handwritten musical notation on a single staff, featuring a treble clef, a key signature of one sharp (F#), and a common time signature (C). The piece concludes with a double bar line and a repeat sign.

137. Sarabanda.

Handwritten musical notation on a single staff, featuring a treble clef, a key signature of one sharp (F#), and a common time signature (C). The piece concludes with a double bar line and a repeat sign.

138. Ballet.

Handwritten musical notation on a single staff, featuring a treble clef, a key signature of one sharp (F#), and a common time signature (C). The piece concludes with a double bar line and a repeat sign.

139. Ballet.

Handwritten musical notation on a single staff, featuring a treble clef, a key signature of one sharp (F#), and a common time signature (C). The piece concludes with a double bar line and a repeat sign.

140. Ballet allegro.



Handwritten musical notation on a five-line staff, featuring a treble clef, a 6/4 time signature, and a series of rhythmic notes.

Handwritten musical notation on a five-line staff, featuring a treble clef and a double bar line. Below the staff, the tempo markings "lento." and "Alleg: presto" are written in cursive.

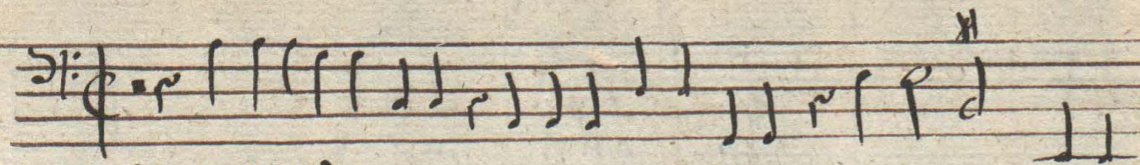
Handwritten musical notation on a five-line staff, featuring a treble clef and a double bar line.

Handwritten musical notation on a five-line staff, featuring a treble clef and a double bar line. The number "148." is written at the end of the staff.

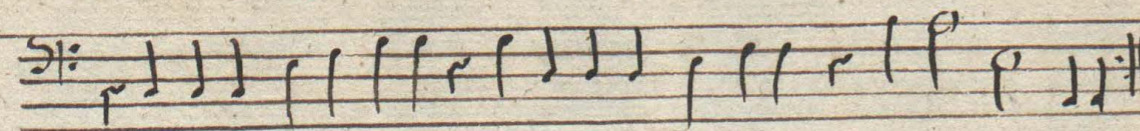
Symphonia 4. G.

Handwritten musical notation on a five-line staff, featuring a treble clef and a double bar line.

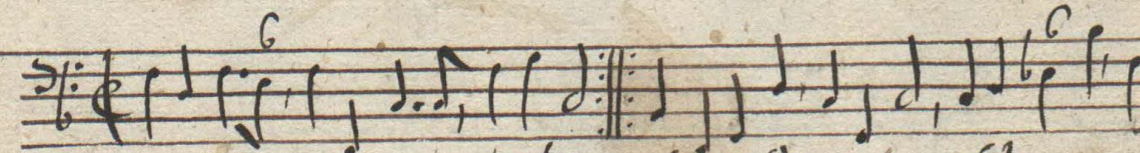
149.



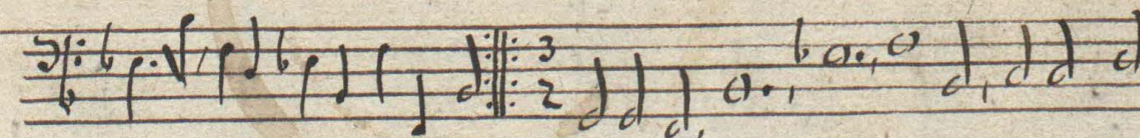
Ballet 3. Zuber.



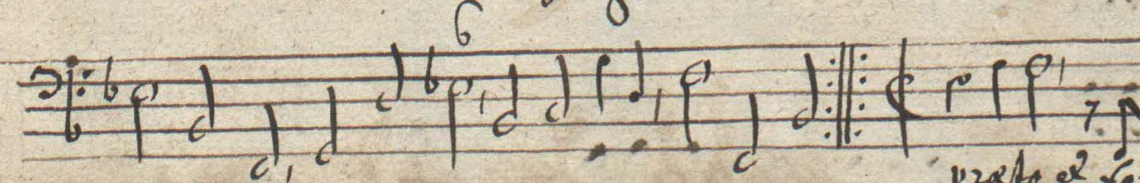
150.



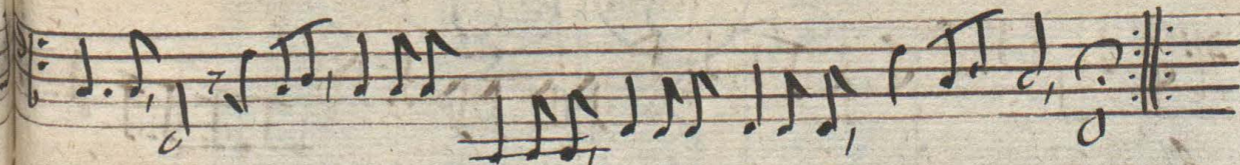
Syren: L. G. *lento* *submissè* *forte*



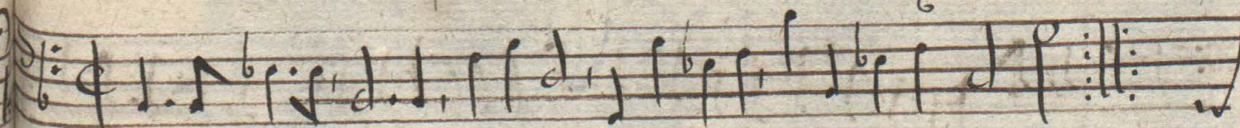
Adagio



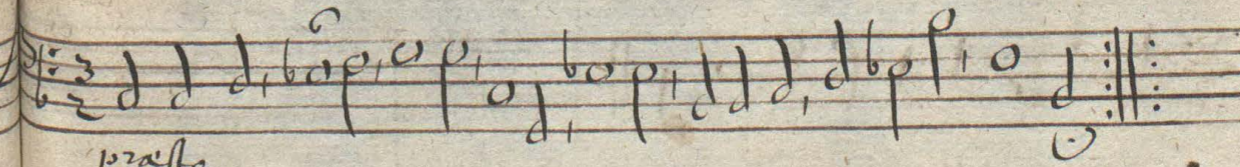
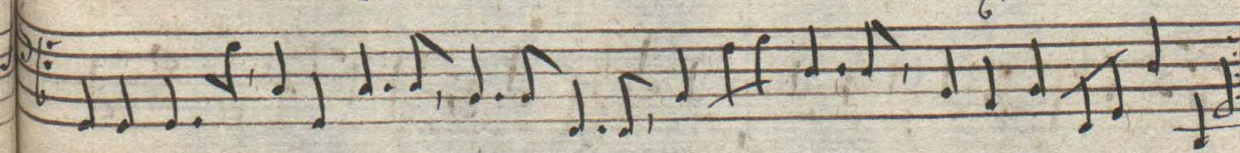
presto et forte



Balletto L. G.



151.



presto.

152.

Alemanda.

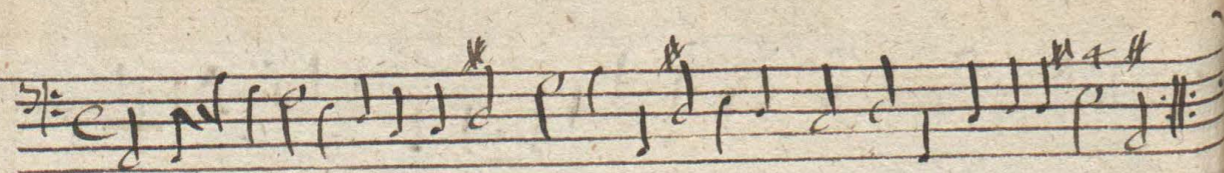
153.

Ballet F. C. Bayreuth. n. 11.

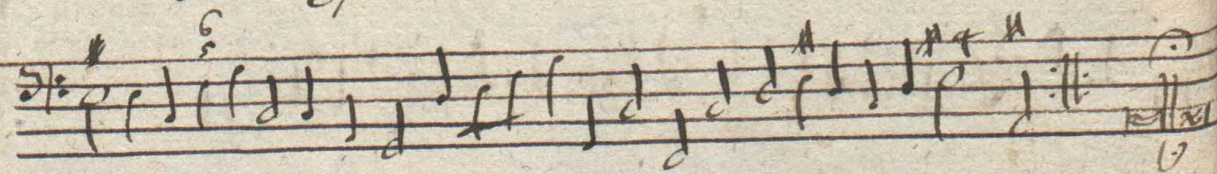
Aria F. C. Bayreuth n. 14.

Aria F. C. Bayreuth n. 15.

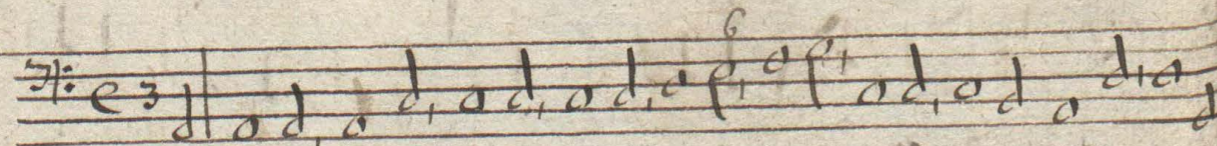
156.



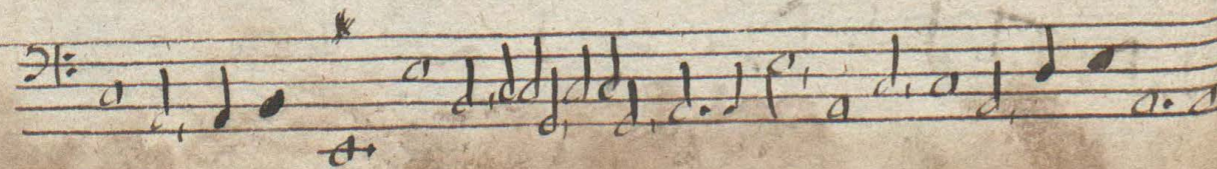
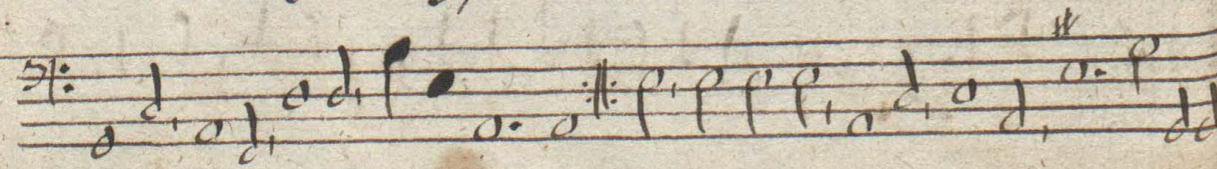
Ballet J. C. Dygfried. n. 16.



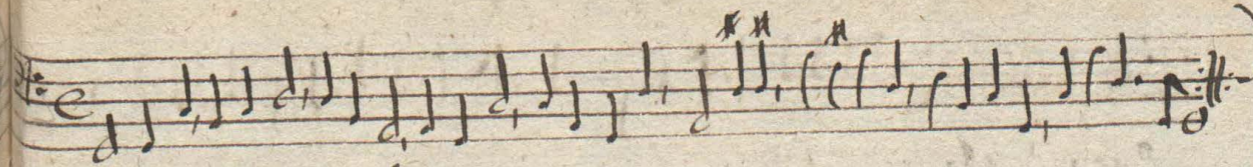
157.



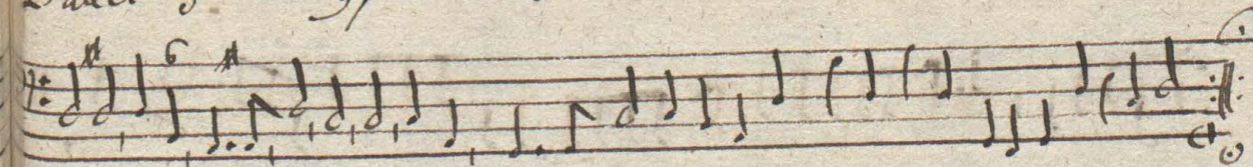
Courante. J. C. Dygfried. n. 17.



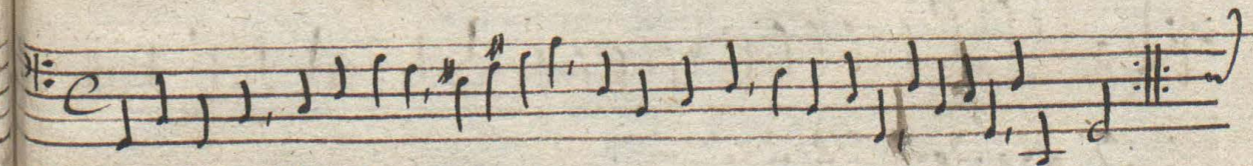
158.



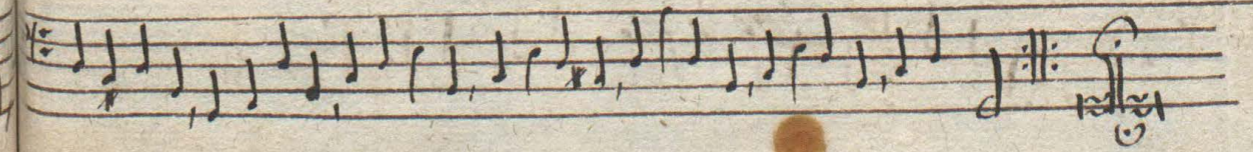
Ballet J. C. Dygfried n. 18.



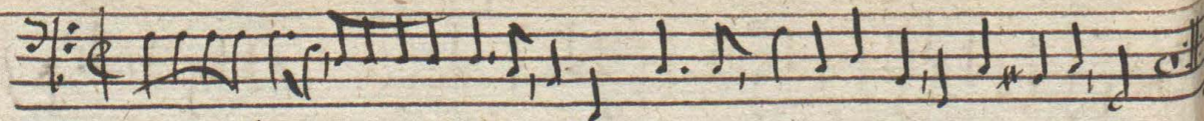
159.



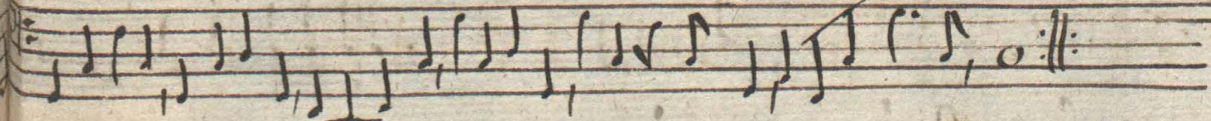
Ballet J. C. Dygfried n. 19.



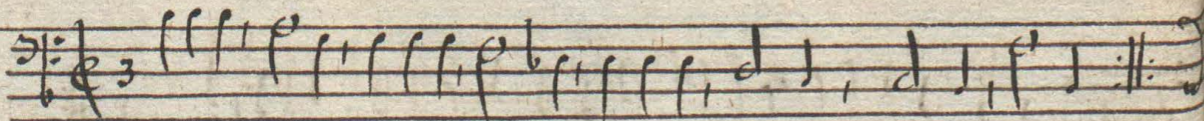
160.



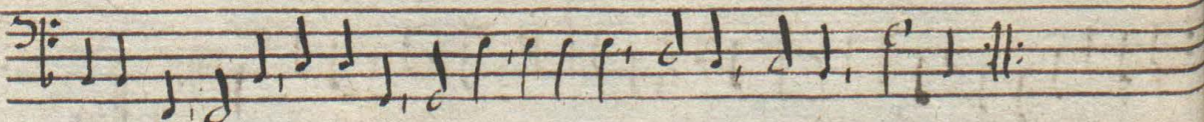
Roco presto f. Zuber.



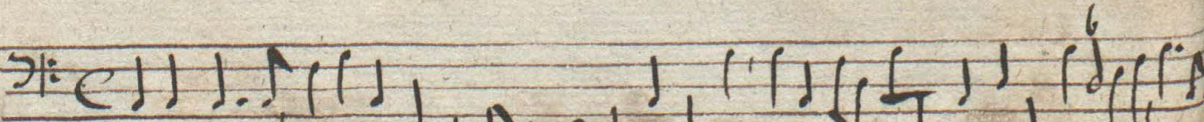
161.



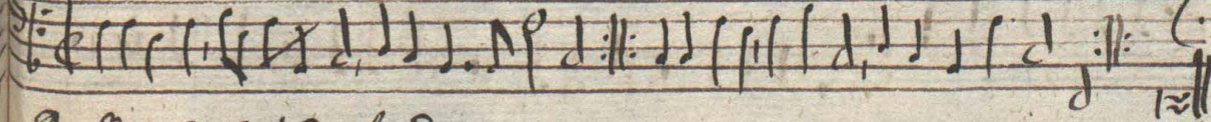
O Rosidore de dea



162.

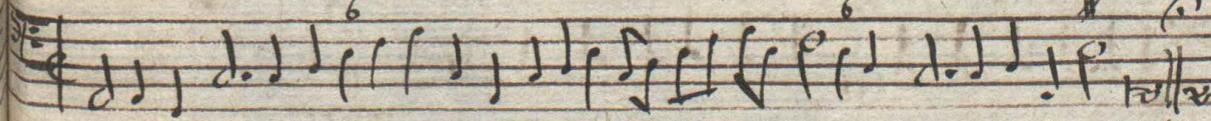


Aria f. c. Dreyfoid n. 40.



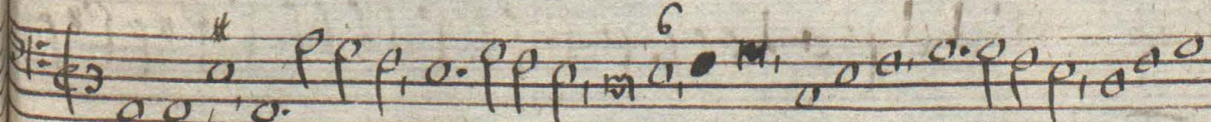
163.

Ballet f. c. Dreyfoid n. 34.



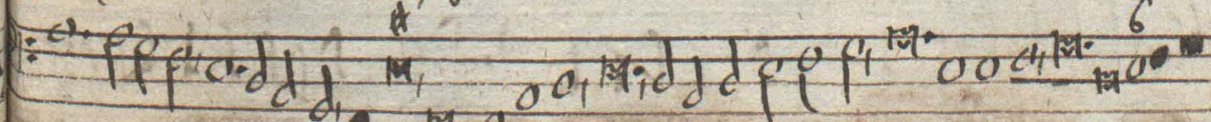
164.

Symphonia A. Baumgüind.



165.

Symphonia A. Baumgüind.



166.

Symphonia A. Baumgüind.

166.

6 6 #4# 6 #4# 6 #4#

Symphonia A. Hammerffüed.

765

#4# 765

Eadem Symphonia.

Trombon.

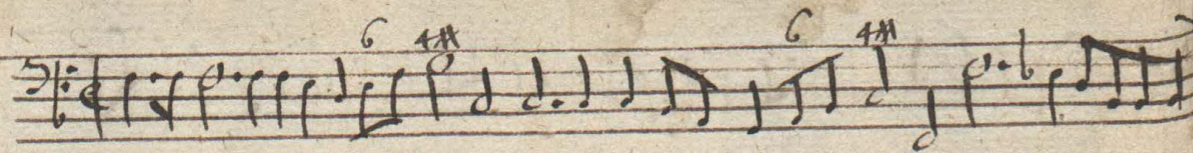
6 6 6 # 4#

Symphonia A. Hammerffüed.

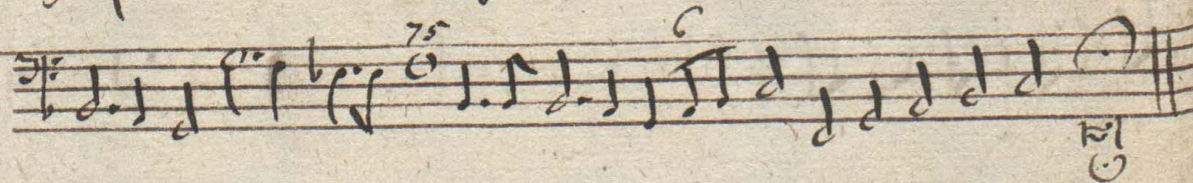
56 4#

167.

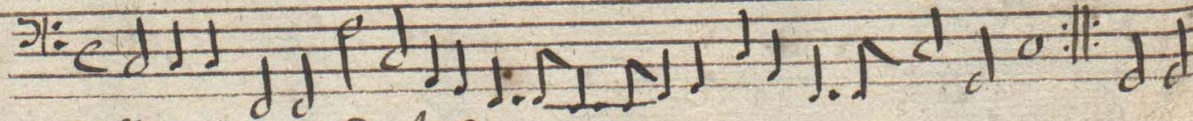
168.



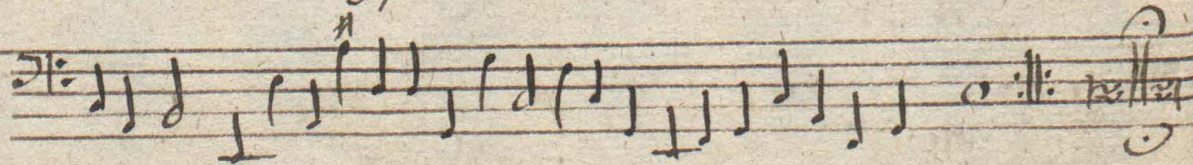
Symphonia H. Bamberger.



169.

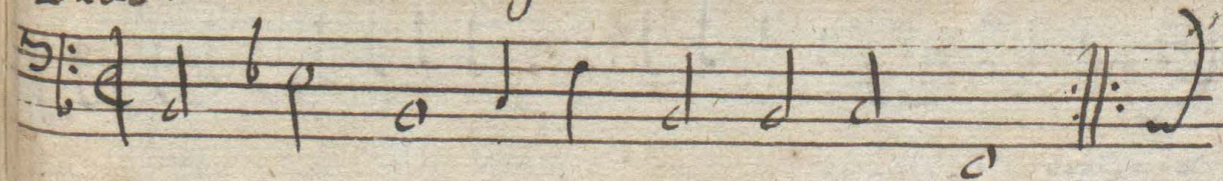


Ballet J. C. Sigfried. n. 27.

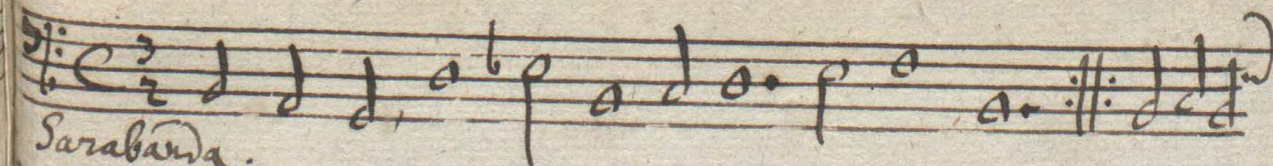
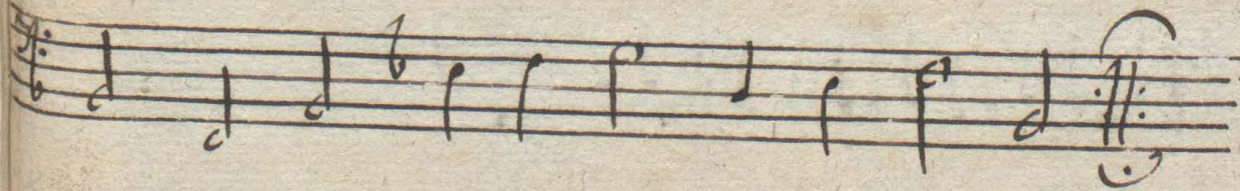


Ballo.

Bass.

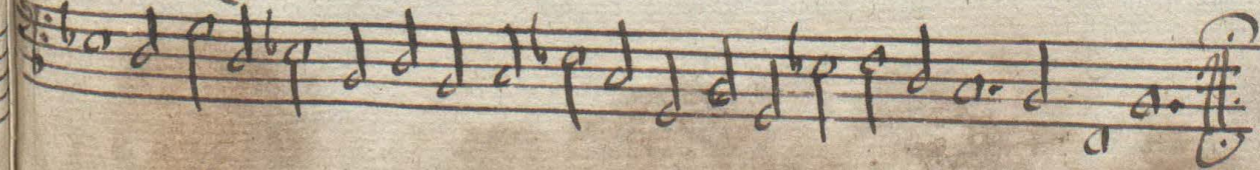


170.

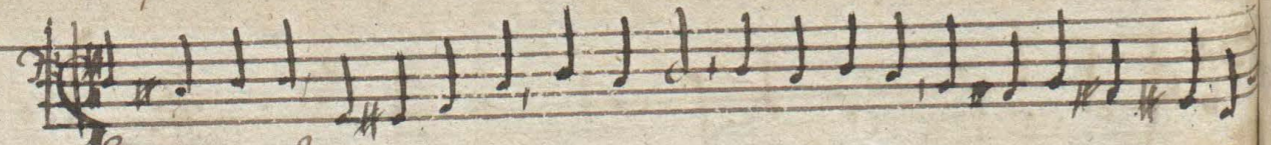


171.

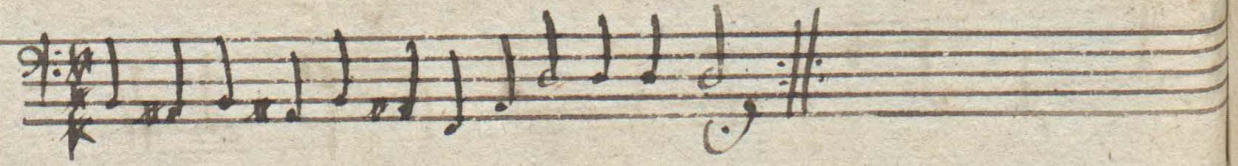
Sarabanda.

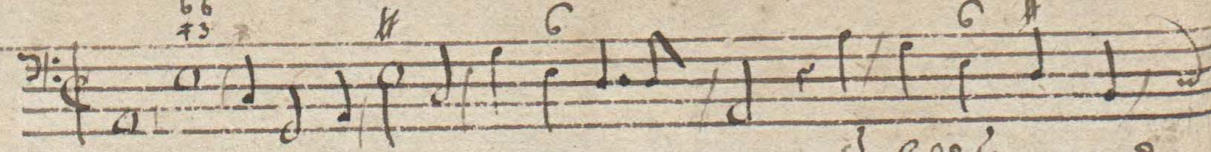


172.



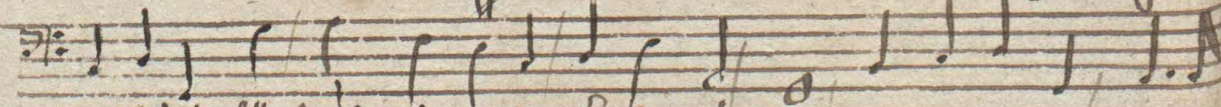
Einzigou Bayoufance.





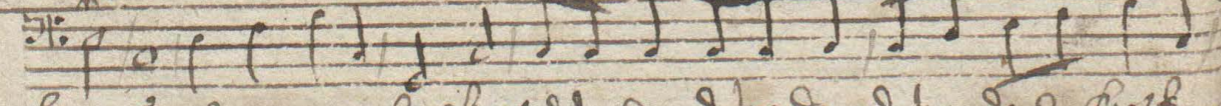
- 1.
- 2.
3. Die armen Bausolden gar sehr geylaget seyn,
- 4.
- 5.
6. Die armen Gänßolden gar sehr bekümbet seyn,

so bald sie werden
so bald sie nun gehn
sobald sie nun gehn
so bald nun weg ist
ist gleich hinweg danet
sie werden gehen ihr

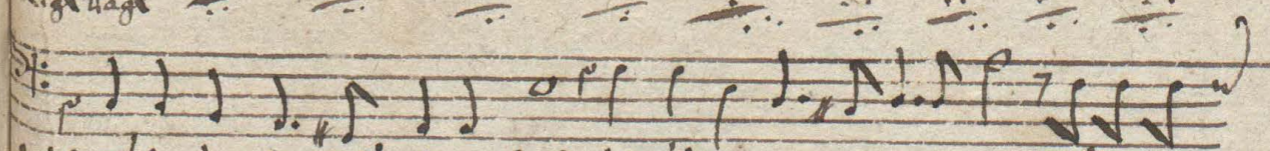
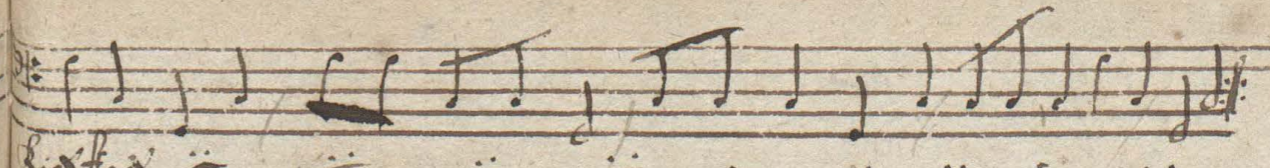


1. außgerückt, frängt sie sich an ihr Elend mit,
2. anst die Weid frängt sie sich an ihr großes Leid
3. wassen groß haben sie noch viel mehr Anstoß,
4. Bisgards tag, da haben sie flücht ein ander Klag,
5. Martins tag, hat dennoch kein End ihr Klag
6. Klags Loß, ihr Vater und ihr Leud groß, daß sie nicht dürfen haben

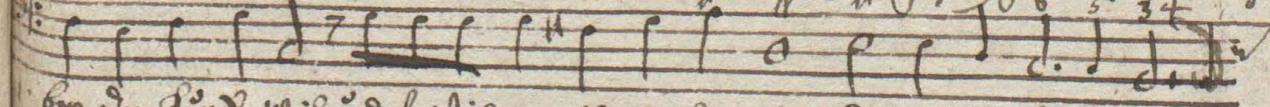
denck haben sie ein große



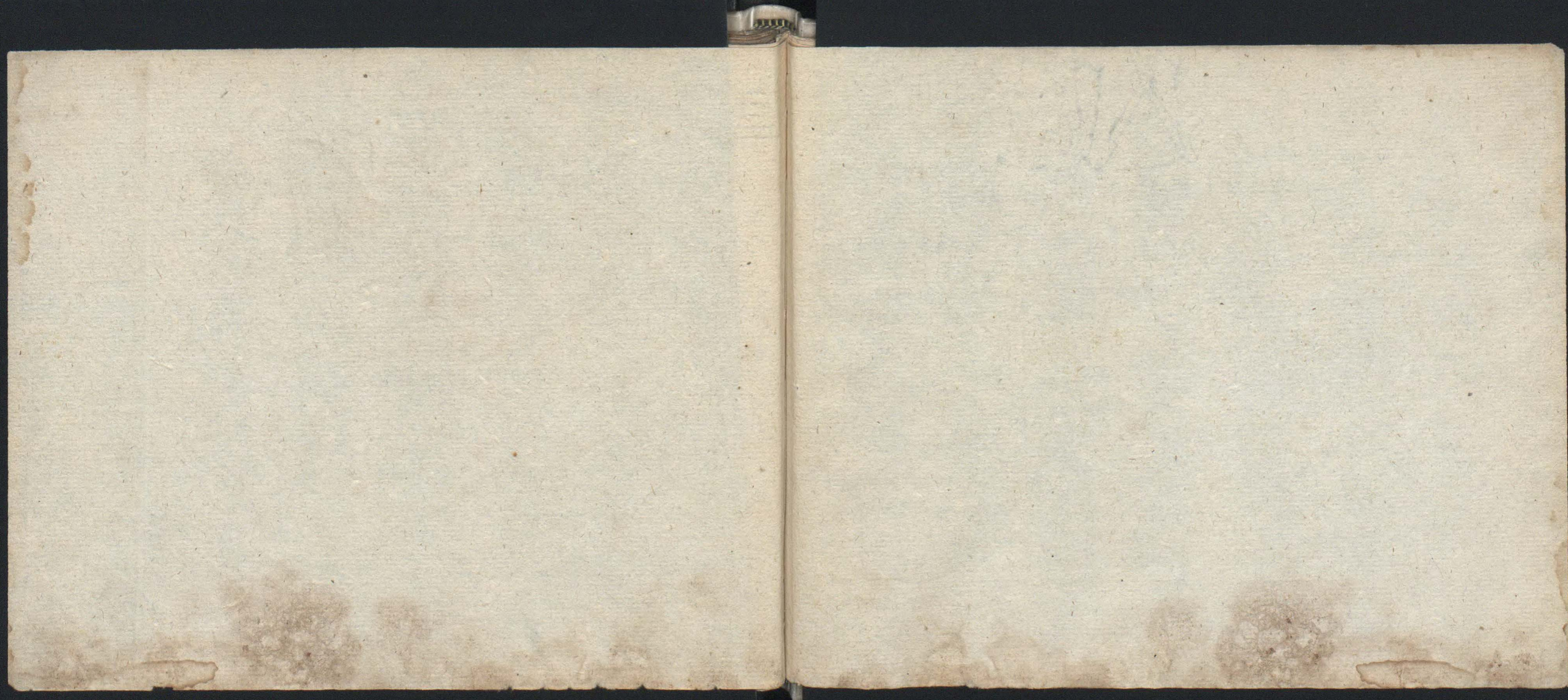
Klag, und seyn alle hie Klag Dada da Dada da, Dada da da hie Klag

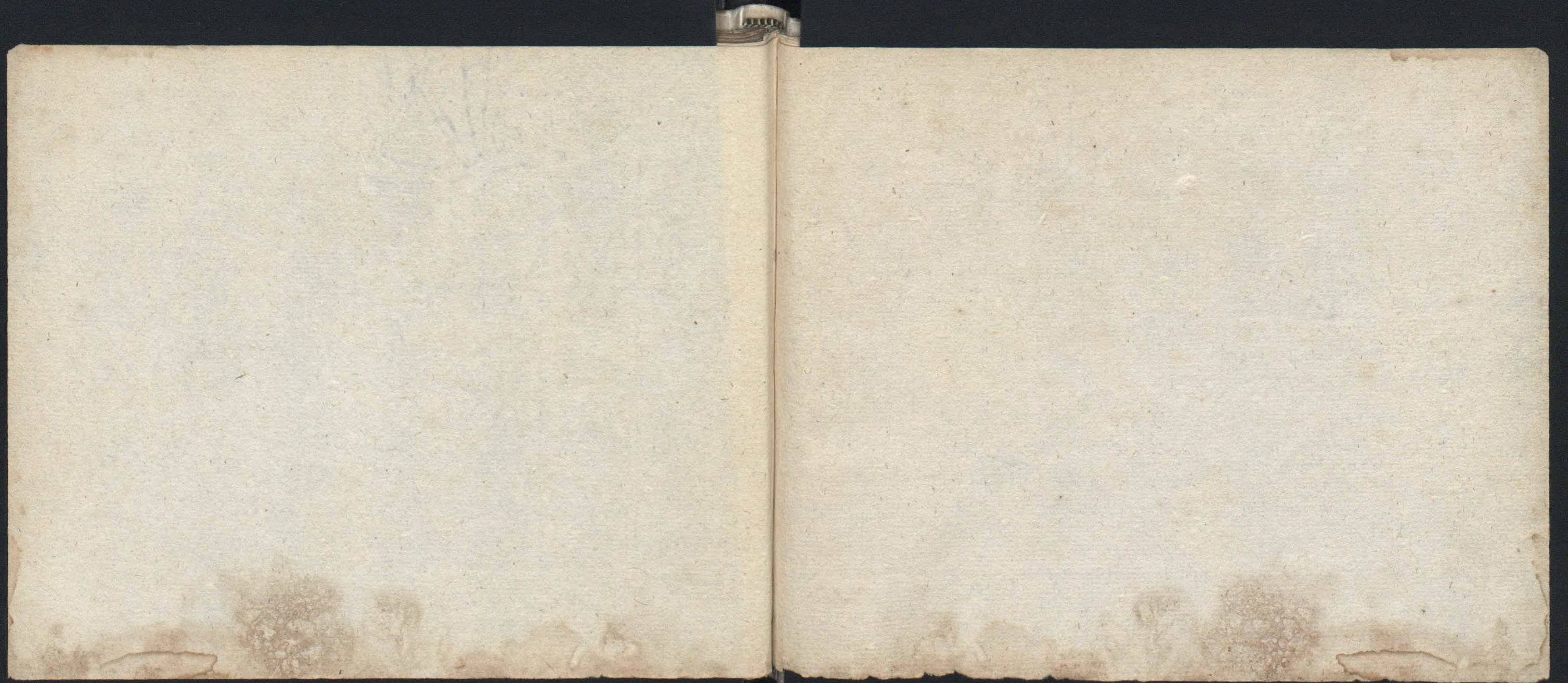


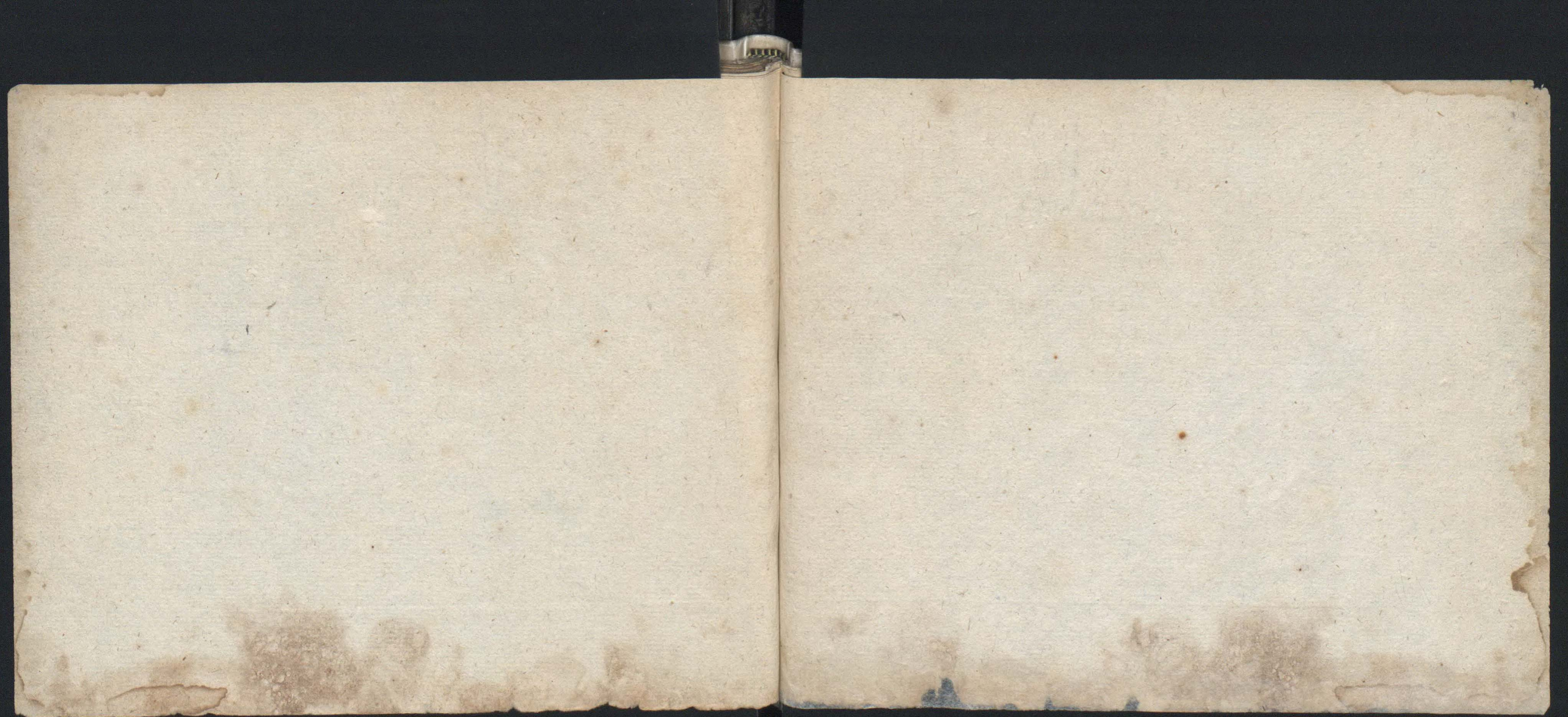
1. Wenn sie nun gehn auf grüner Feld, und fieser wollen ihr Weid, da kömbl sie
2. wenn sie nun gehn auf grüner Feld, und alle fieser ihr Weid, da kömbl sie
3. wenn sie ein wenig zu groß seyn, so soll man sie in Stall fesseln, und hüt sie
4. Viel Gänße sind der Welt worden, von den brüder S. Martins Tod, und will noch
5. So bald weggehen ist Martins, so frängt sie an der Bausen Dienst, die hüt den
6. Wenn sie nicht wollt ihr Martins brüder, den Gansen geben ihr freyheit wieder, wollen sie

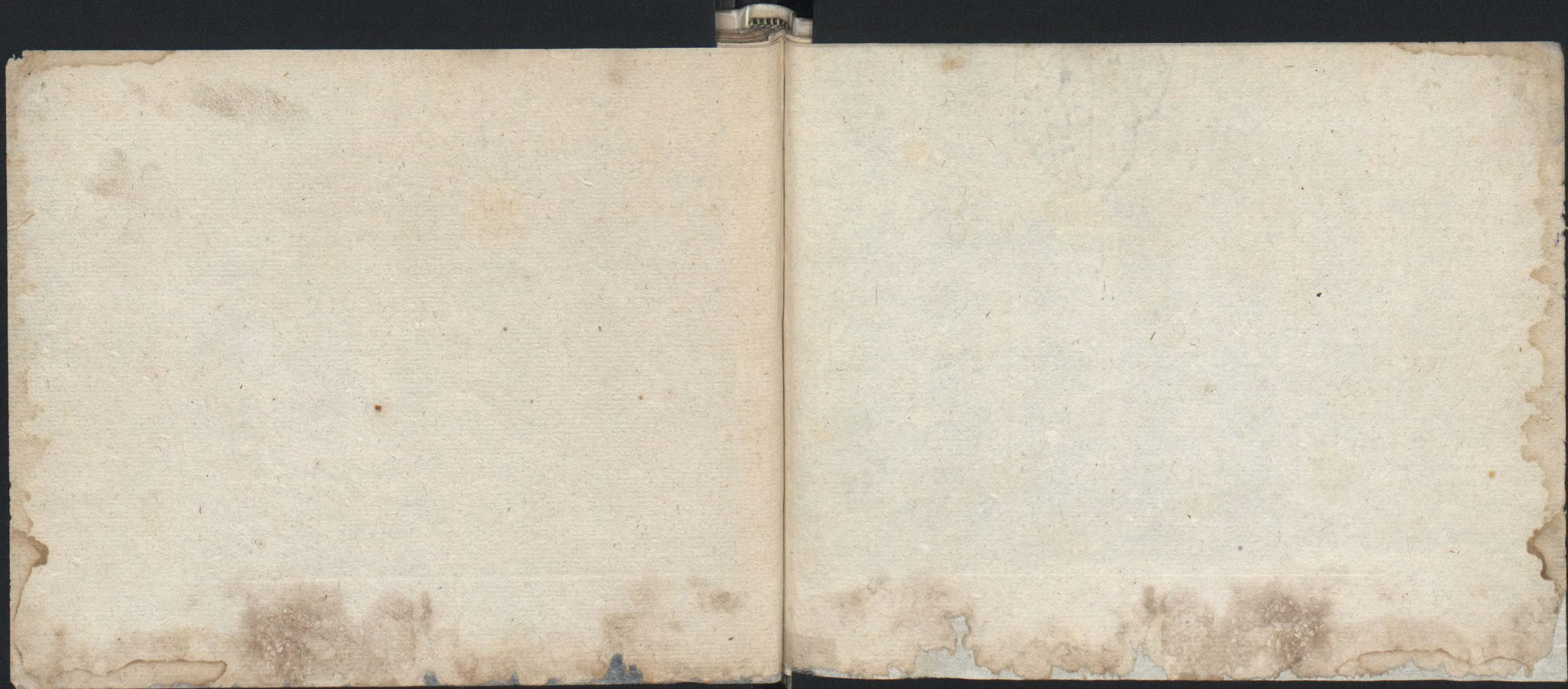


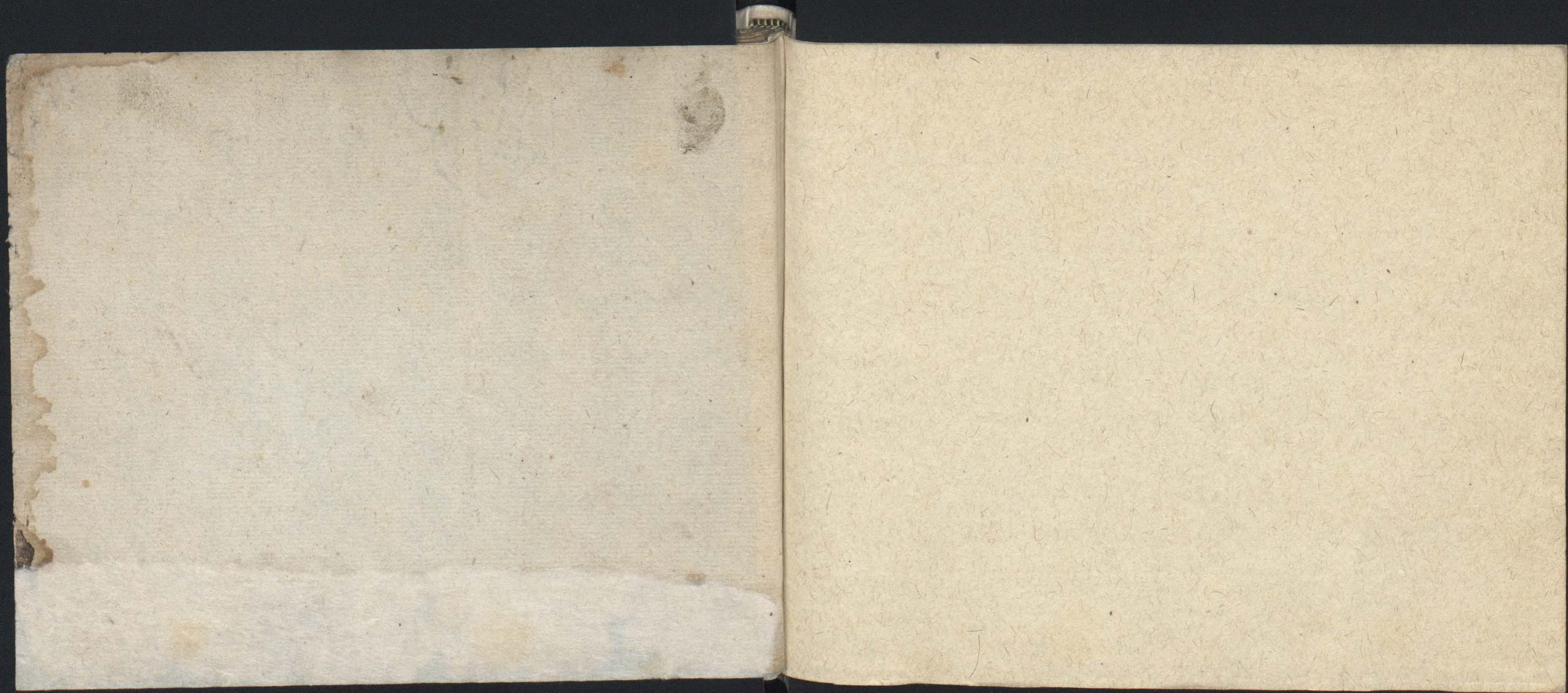
1. bey der Ländel Weid, und frist ihr gar viel ofen seyn, die armen Gänß haben gro,
2. die Soldaten freubig, und flaugen ihr gar viel ofen seyn, die armen Gänß haben gro,
3. wader wasser fitt, so lang S. Bisgard freubig geht, wenn freubig ist danet Dada
4. haben kein, außser sie hüt ihr noch gar viel freubig, wenn freubig ist danet Mar
5. Gänßen gehen Dada, wenn sie die Wälder zu Dienst lade, wenn sie anfängt der Dada
6. alle fliegen Dada, oder sie alle braten Lau, wenn die Gänß all gebra,











SI.B.94.37

