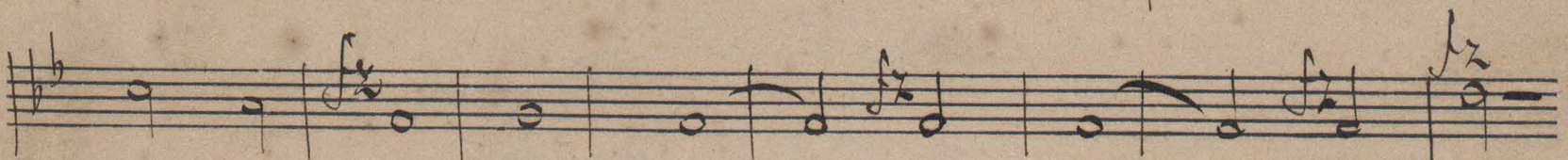
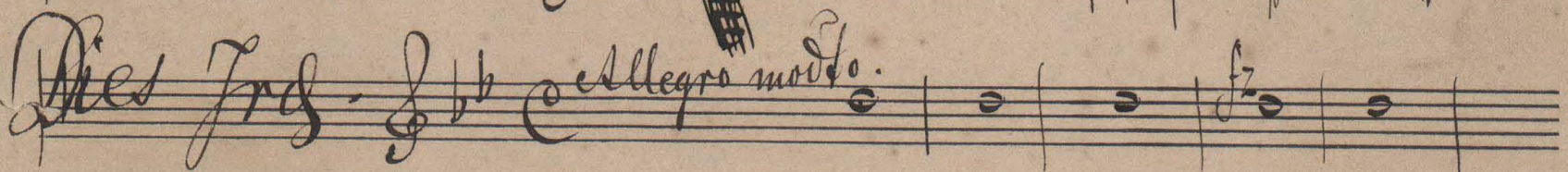
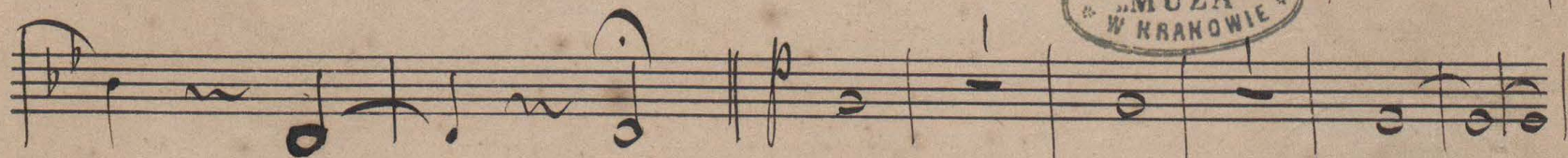
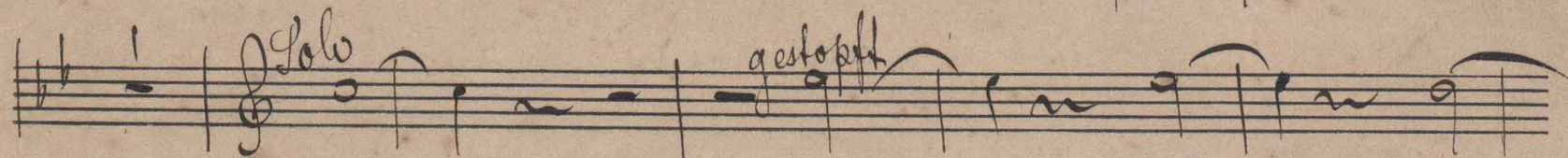
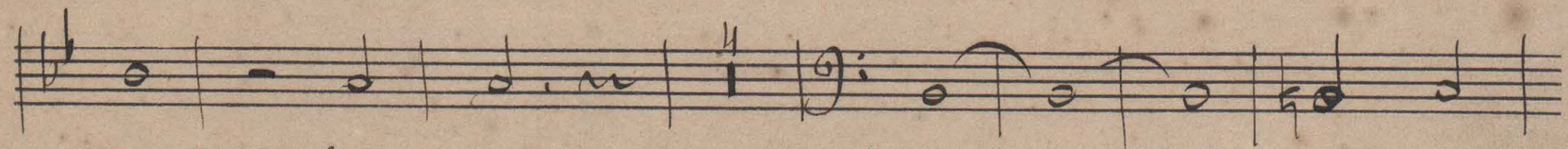


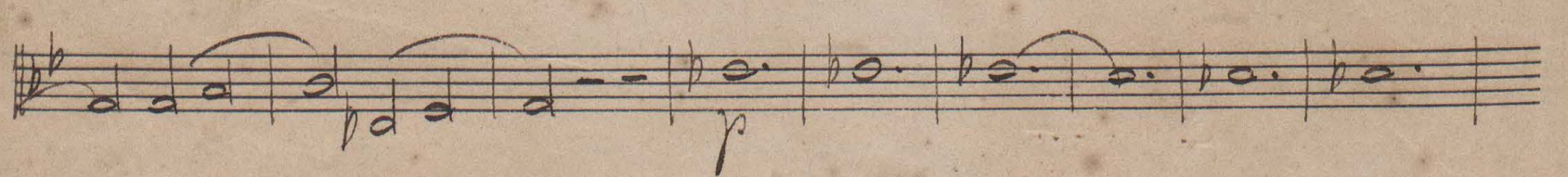
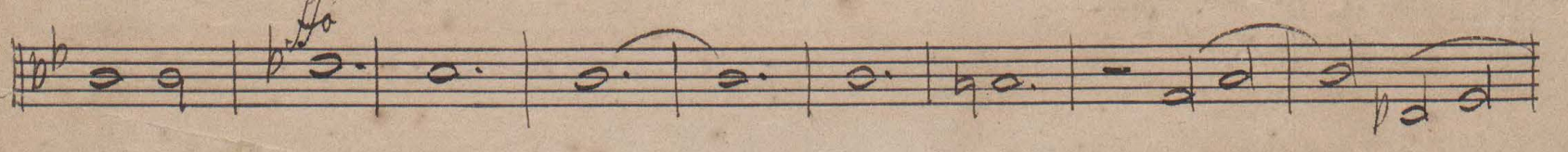
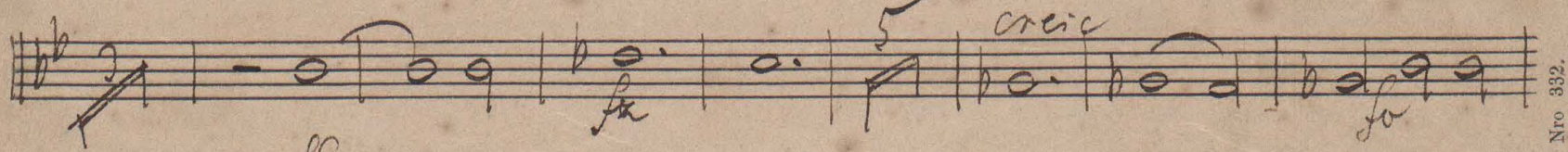
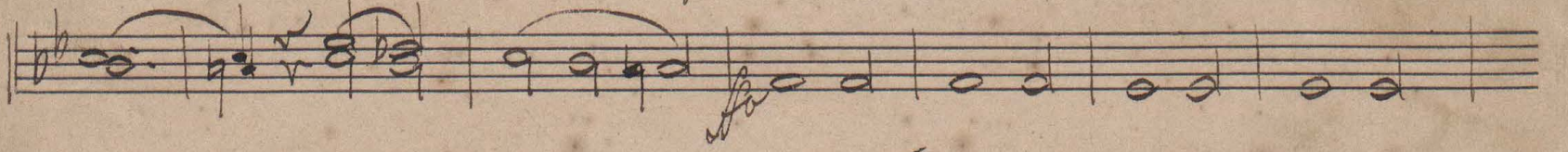
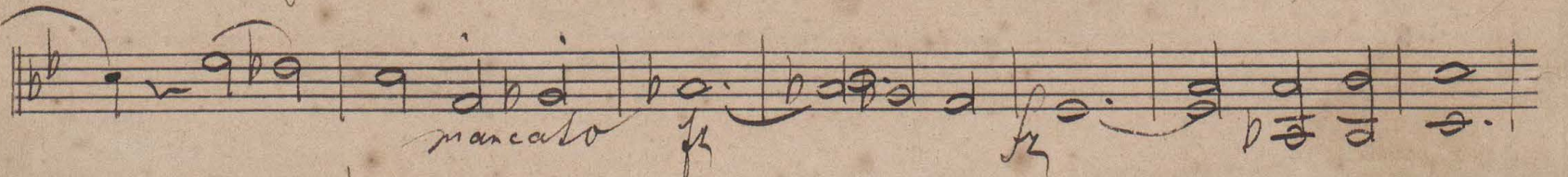
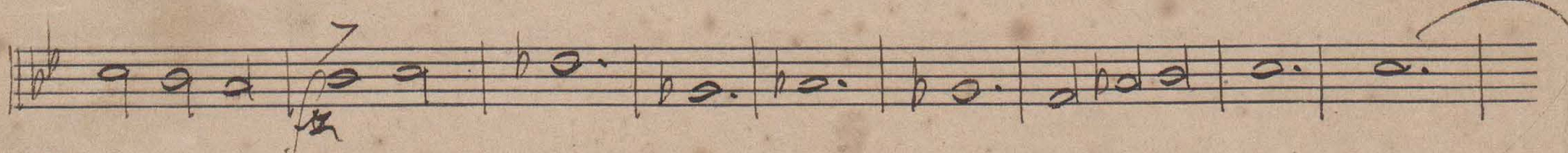
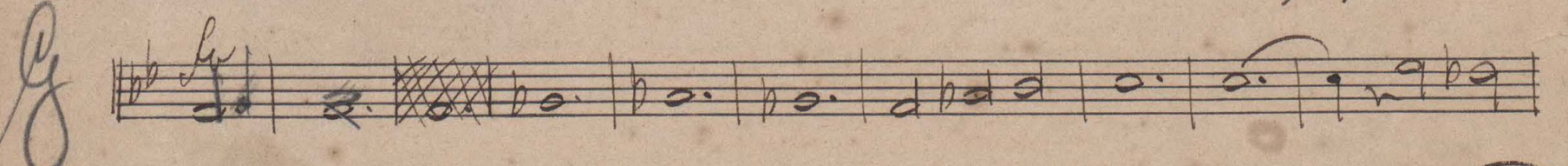
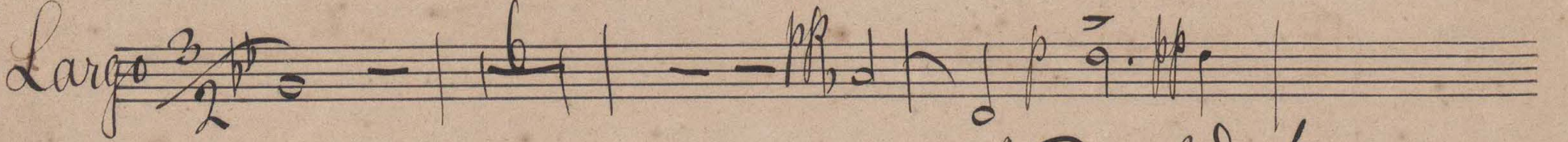
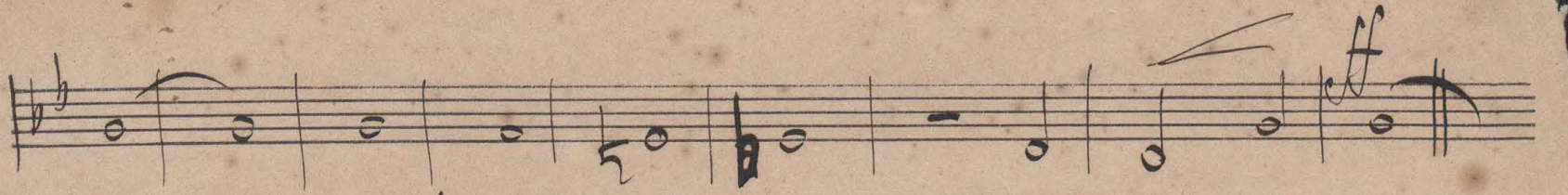
Corno I. in F. No. 22. A. 4.

verh. 4.

Introduktion & Rondo 48













*Adagio N. 3. Agnus Dei*

Handwritten musical notation on a single staff, featuring a treble clef, a key signature of one flat (B-flat), and a common time signature (C). The notation includes various note values, rests, and dynamic markings such as *ff* and *ffz*.

Handwritten musical notation on a single staff, continuing the piece with notes, rests, and dynamic markings like *ff*.

Handwritten musical notation on a single staff, showing a melodic line with notes and rests.

Handwritten musical notation on a single staff, including notes, rests, and dynamic markings such as *pp* and *ppz*.

Handwritten musical notation on a single staff, featuring notes, rests, and dynamic markings like *pp*.

Handwritten musical notation on a single staff, starting with the tempo marking *Moderato* and ending with *Adagio*. It includes notes, rests, and dynamic markings such as *pp*.

Handwritten musical notation on a single staff, concluding the piece with notes and rests.

Empty musical staff.

Empty musical staff.

Empty musical staff.

Empty musical staff.

Empty musical staff.