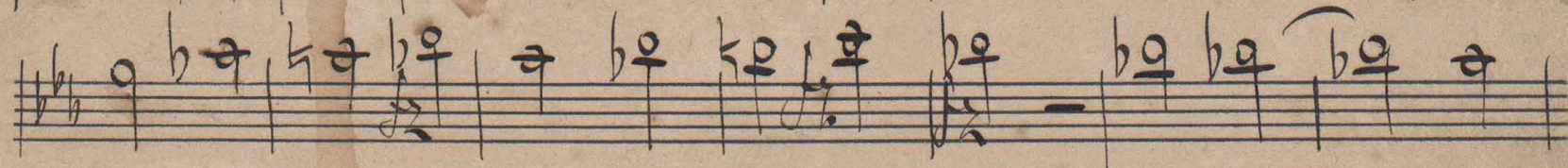
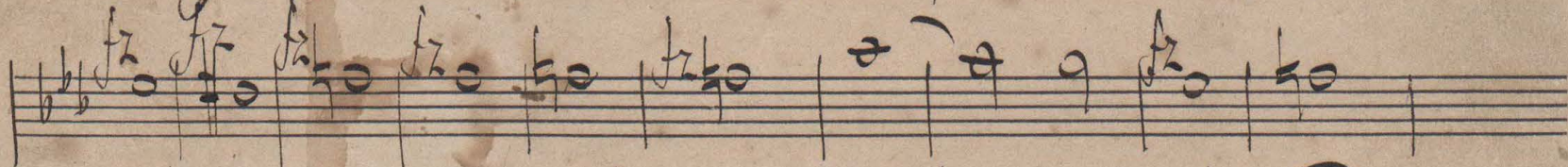
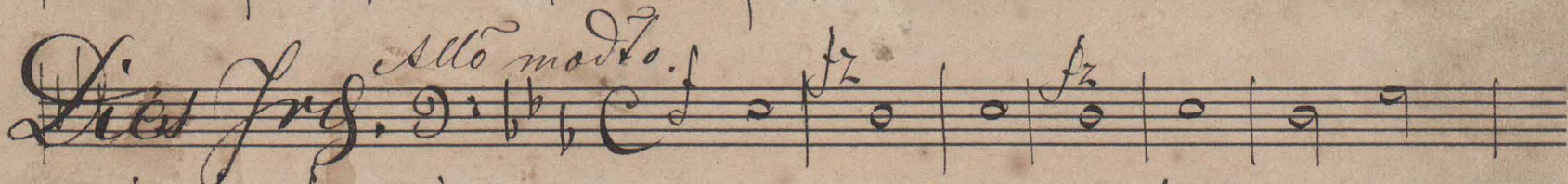
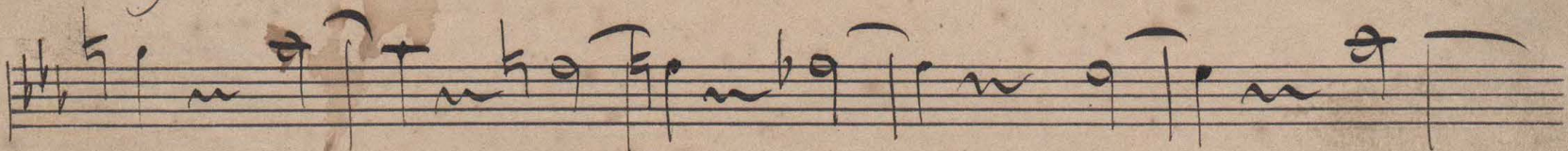
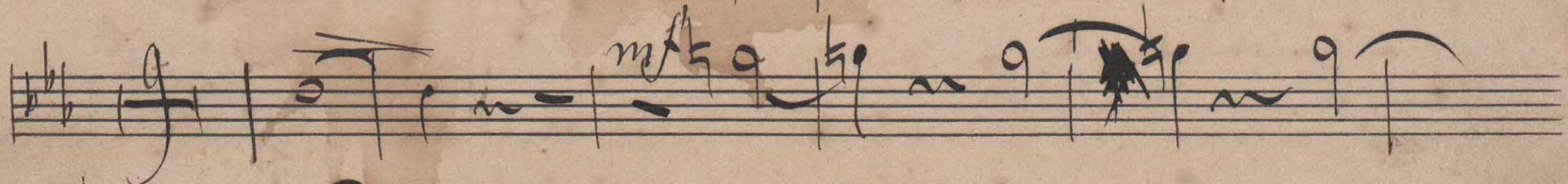
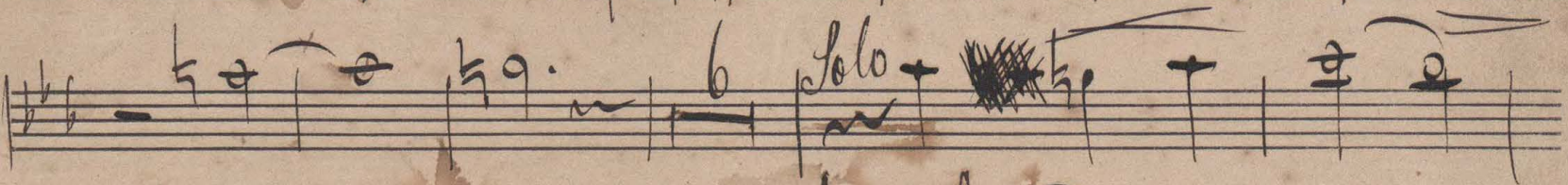
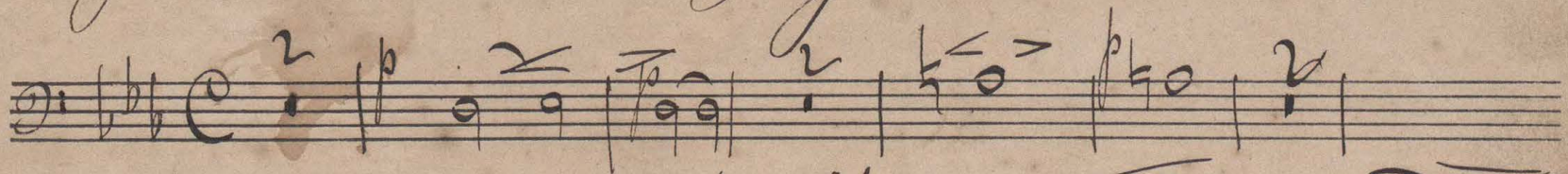


II Trombone Tenore. No 22. 4/4. Verhulst.

Introdutio et Pyrie 48



Handwritten musical notation on a five-line staff, featuring a treble clef, a key signature of two flats (B-flat and E-flat), and a common time signature. The notation includes several whole and half notes with stems.

Handwritten musical notation on a five-line staff, featuring a treble clef, a key signature of two flats, and a common time signature. It includes a *Larghetto* marking and a triplet of notes.

Handwritten musical notation on a five-line staff, featuring a treble clef, a key signature of two flats, and a common time signature. It includes a *pp* marking and a triplet of notes.

Handwritten musical notation on a five-line staff, featuring a treble clef, a key signature of two flats, and a common time signature. It includes a *Larghetto* marking and a triplet of notes.

Handwritten musical notation on a five-line staff, featuring a treble clef, a key signature of two flats, and a common time signature. It includes a *Larghetto* marking and a triplet of notes.

Handwritten musical notation on a five-line staff, featuring a treble clef, a key signature of two flats, and a common time signature. It includes a *Larghetto* marking and a triplet of notes.

Handwritten musical notation on a five-line staff, featuring a treble clef, a key signature of two flats, and a common time signature. It includes a *Larghetto* marking and a triplet of notes.

Handwritten musical notation on a five-line staff, featuring a bass clef, a key signature of two flats, and a common time signature. It includes a *Moderato* marking and a triplet of notes.

Handwritten musical notation on a five-line staff, featuring a bass clef, a key signature of two flats, and a common time signature. It includes a *marcato* marking and a triplet of notes.

Handwritten musical notation on a five-line staff, featuring a bass clef, a key signature of two flats, and a common time signature. It includes a *marcato* marking and a triplet of notes.

Handwritten musical notation on a five-line staff, featuring a bass clef, a key signature of two flats, and a common time signature. It includes a *marcato* marking and a triplet of notes.

Handwritten musical notation on a five-line staff, featuring a bass clef, a key signature of two flats, and a common time signature. It includes a *ffo marcato* marking and a triplet of notes.

1 2 3

cresc en
~~musical staff~~
f c b a a a a f
dim

Largamente
pp 10/10

Andante molto
cantabile
pp 13

Adagio
dim

St. Sanctus
pp cresc f pp

Adagio
pp 15

A 5 Agnus Dei
Verso

Adagio N. 5. *Agnus Dei*