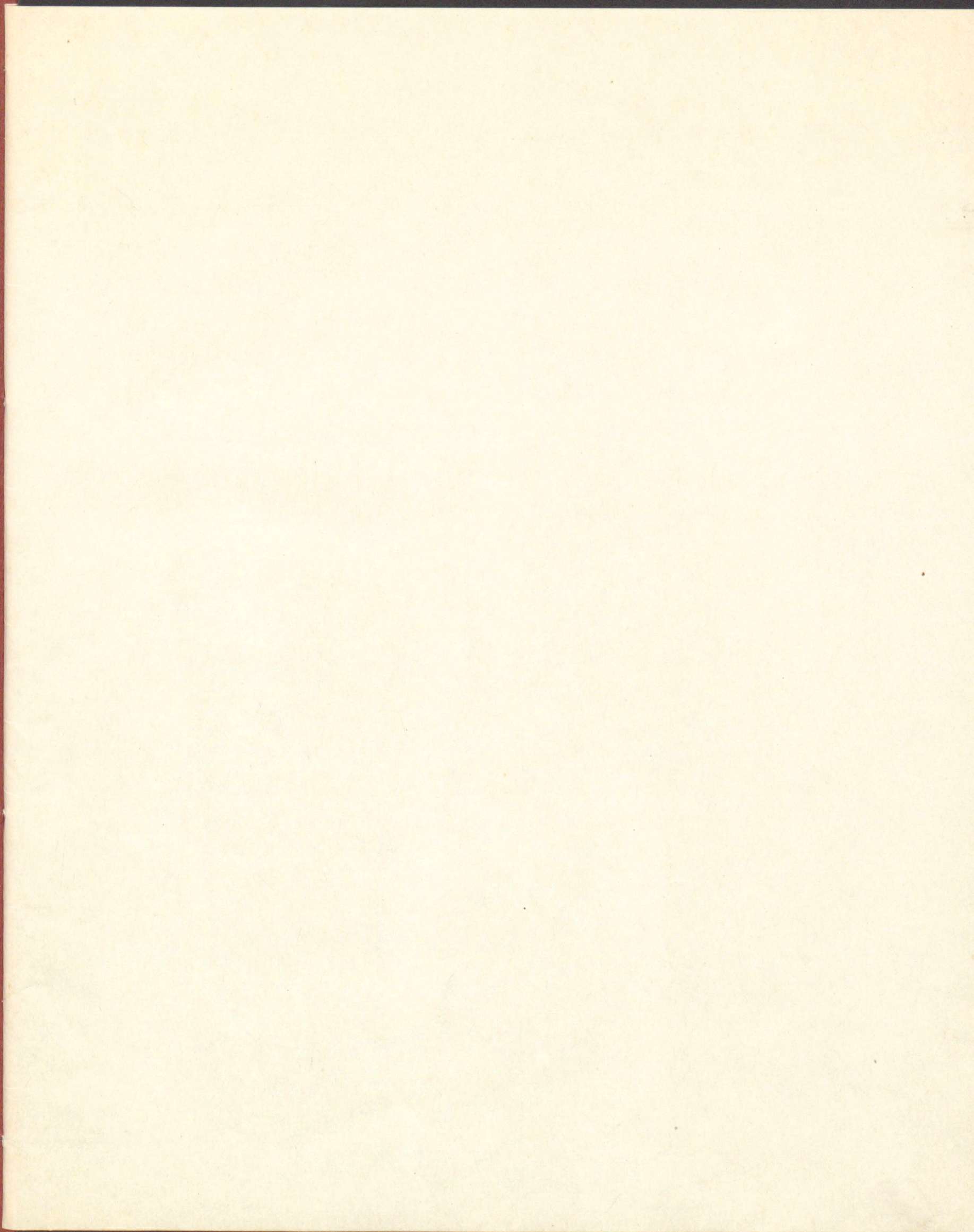
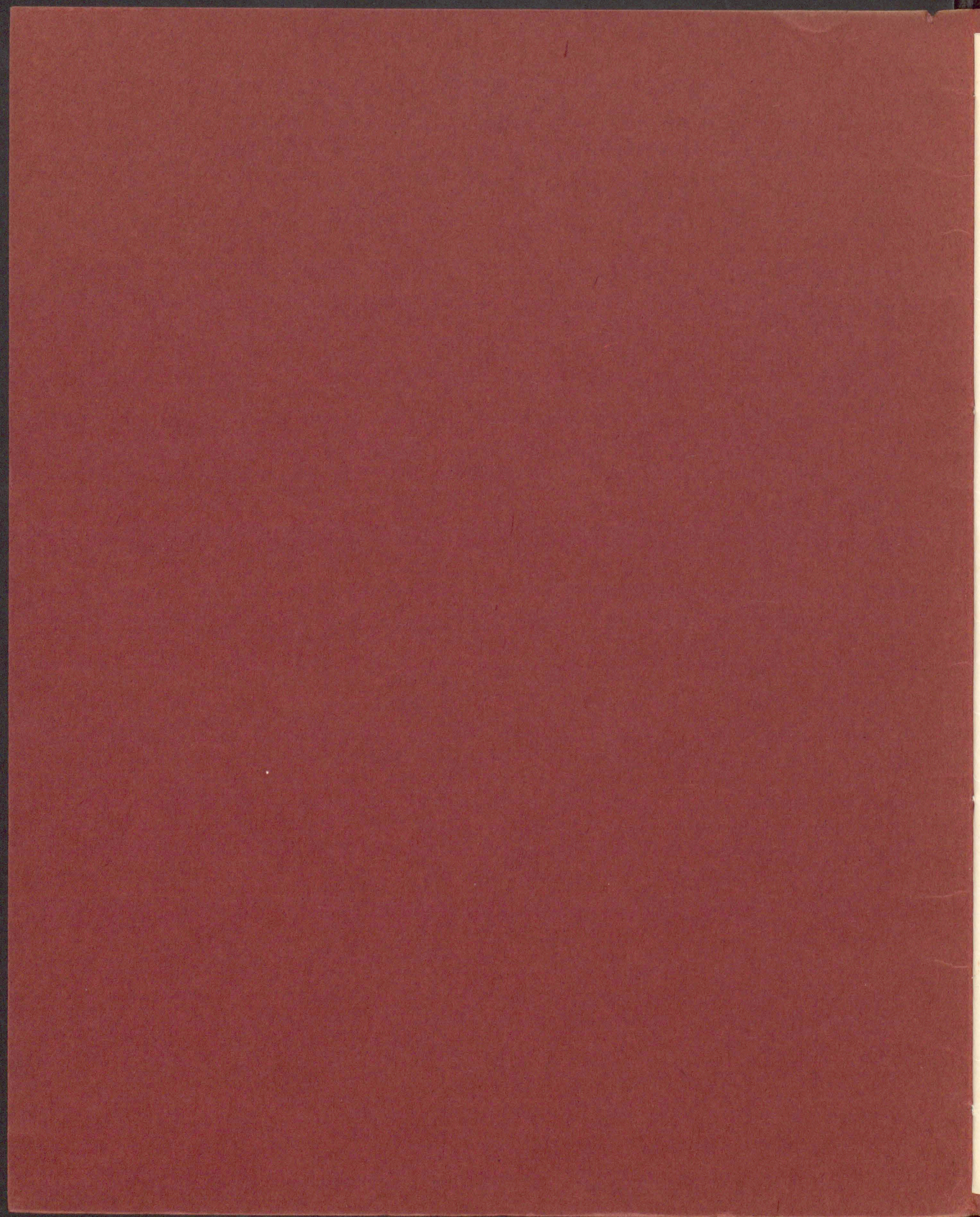


Mus. ms. autogr.

Loewe, Karl 12

" Von seinem Bildnis



Mms. ms. autogr. Karl Loewe 12

Nachtstündchen.

Loewe

Andantino.

Voce

Musical notation for the vocal line, starting with a treble clef, a key signature of two flats, and a 9/4 time signature. The first few measures contain rests, followed by a melodic phrase.

Von deinem

Piano

Piano accompaniment for the first system, featuring a grand staff with treble and bass clefs. It includes a 'Pédale' marking and a 'mf' dynamic.

Vocal line with lyrics: "Bild - de nur umschwebet schlaf ich getrost und glücklich". The lyrics are written in a cursive hand below the notes.

Piano accompaniment for the second system, continuing the musical texture from the first system.

Vocal line with lyrics: "ein, schlaf ich getrost und glücklich". The lyrics are written in a cursive hand below the notes.

Piano accompaniment for the third system, including a 'Pédale' marking and a 'p' dynamic.



ein, ich seh die Nacht wie grüne Wälder und dein Gesicht wie Rosen-

piano

forte
rhein, und dein Gesicht wie Rosenrhein, und dein Gesicht wie Rosen-

Segue Mi-
rhein!
Daß schließt von

more
mei - - nem Bild umschwebet, sich wohl getrost das Auge

dein?
Ja, laß mich bei der Ange-

den - ken deines Gedan - ken Friede sein, deines Ge-

6

mein: der letzte Ton verklingt zum Himmel, der letzte

Wort: schlaf ein! schlaf ein! das letzte Wort: schlaf ein! schlaf

ritenuto

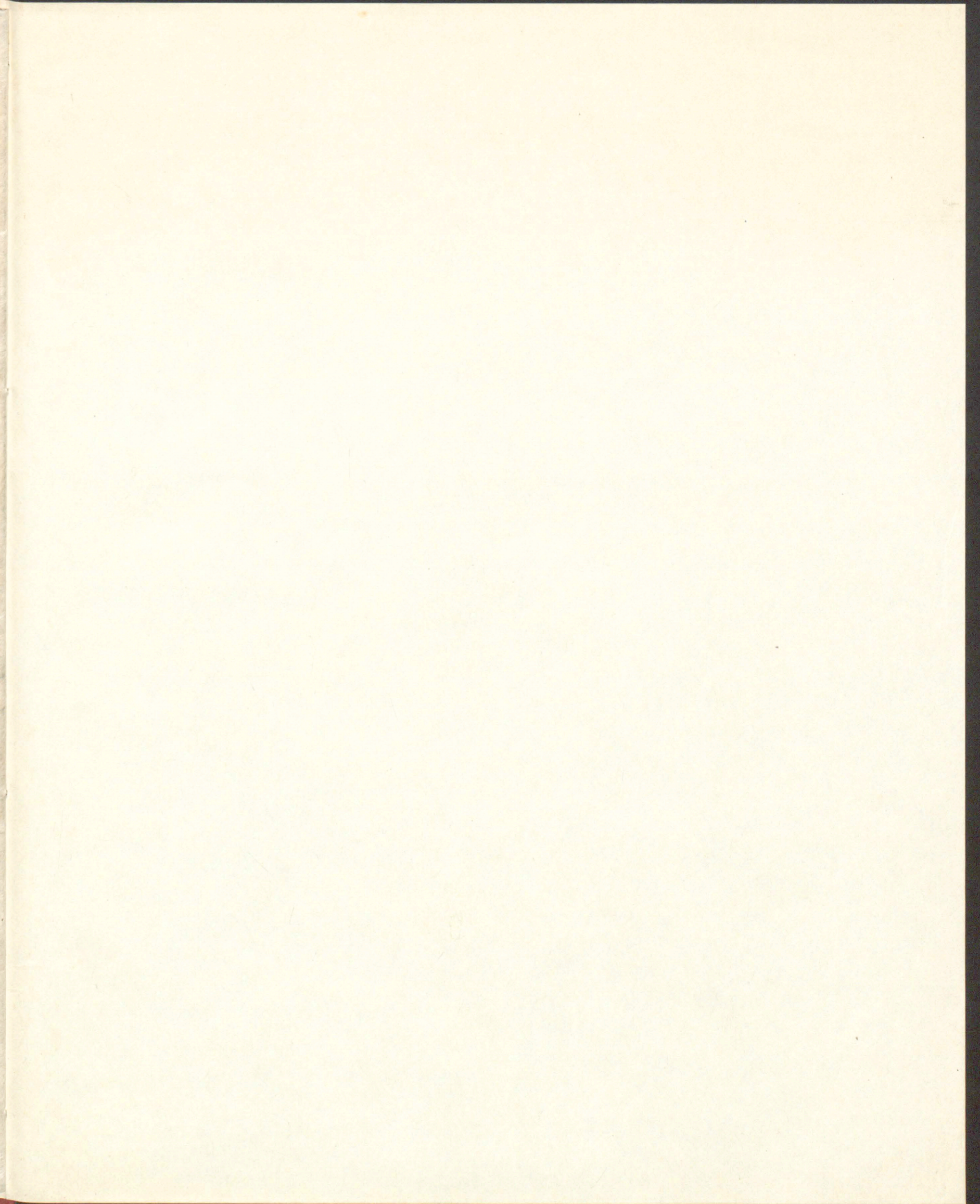
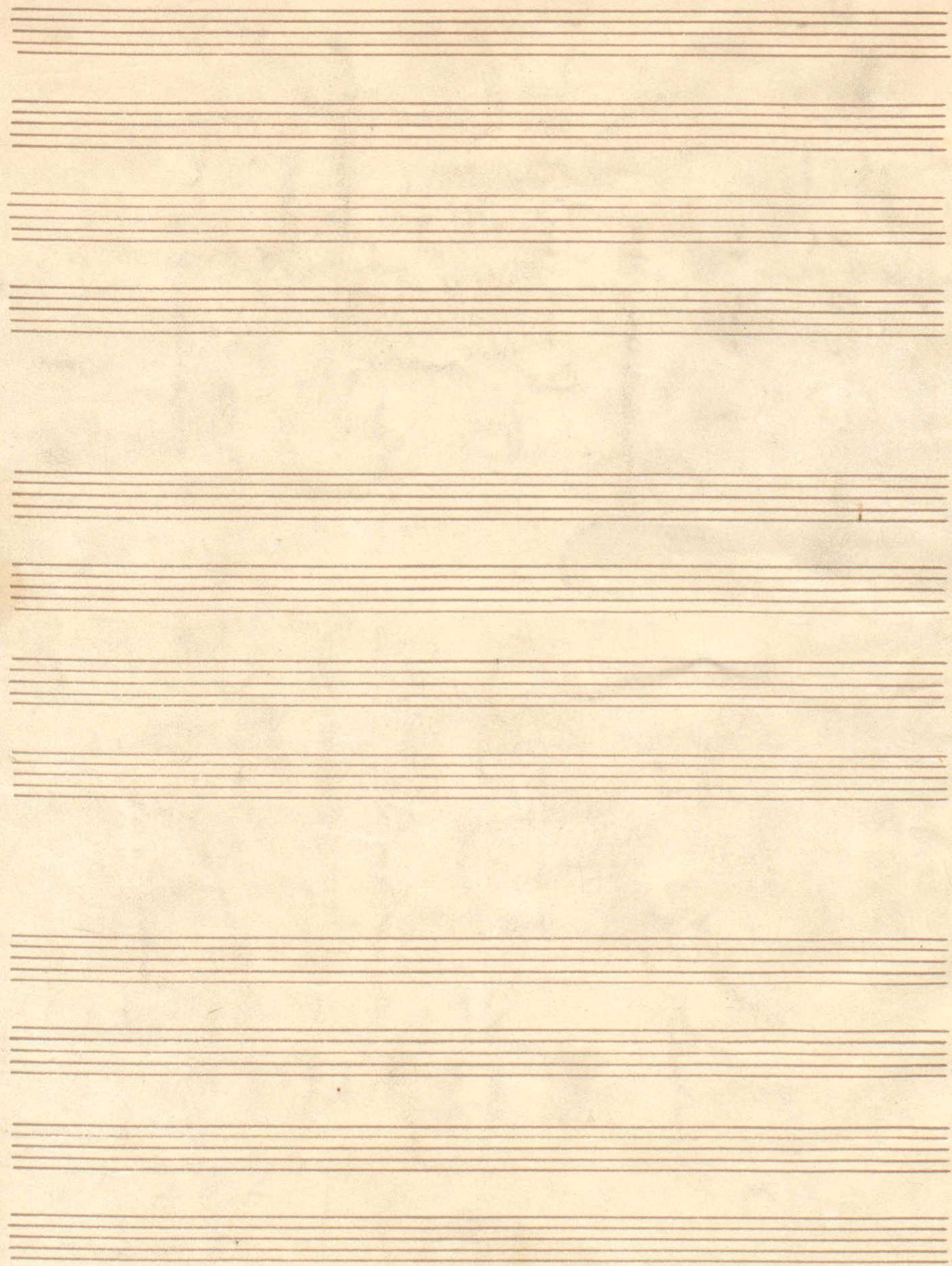
ein!

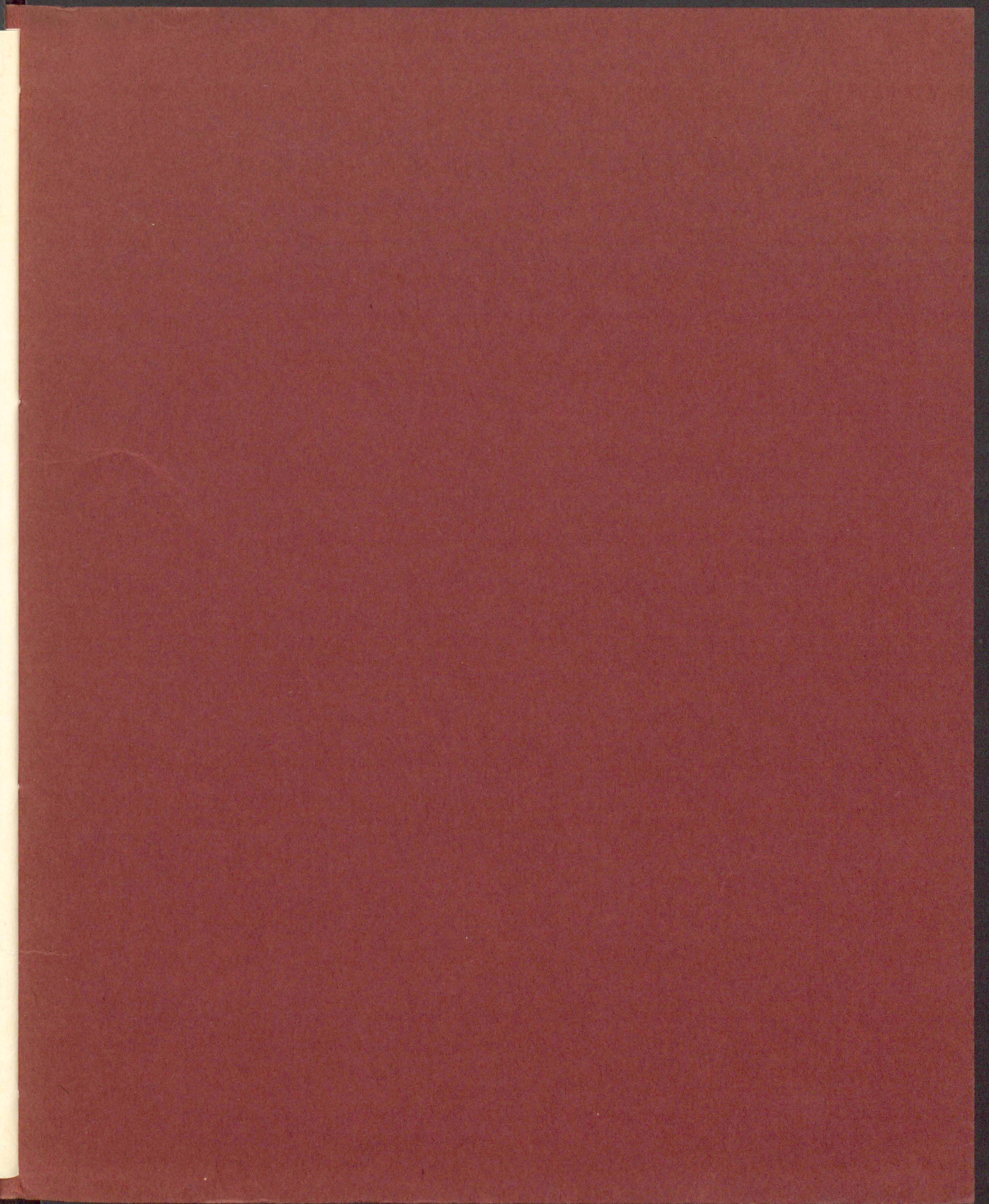
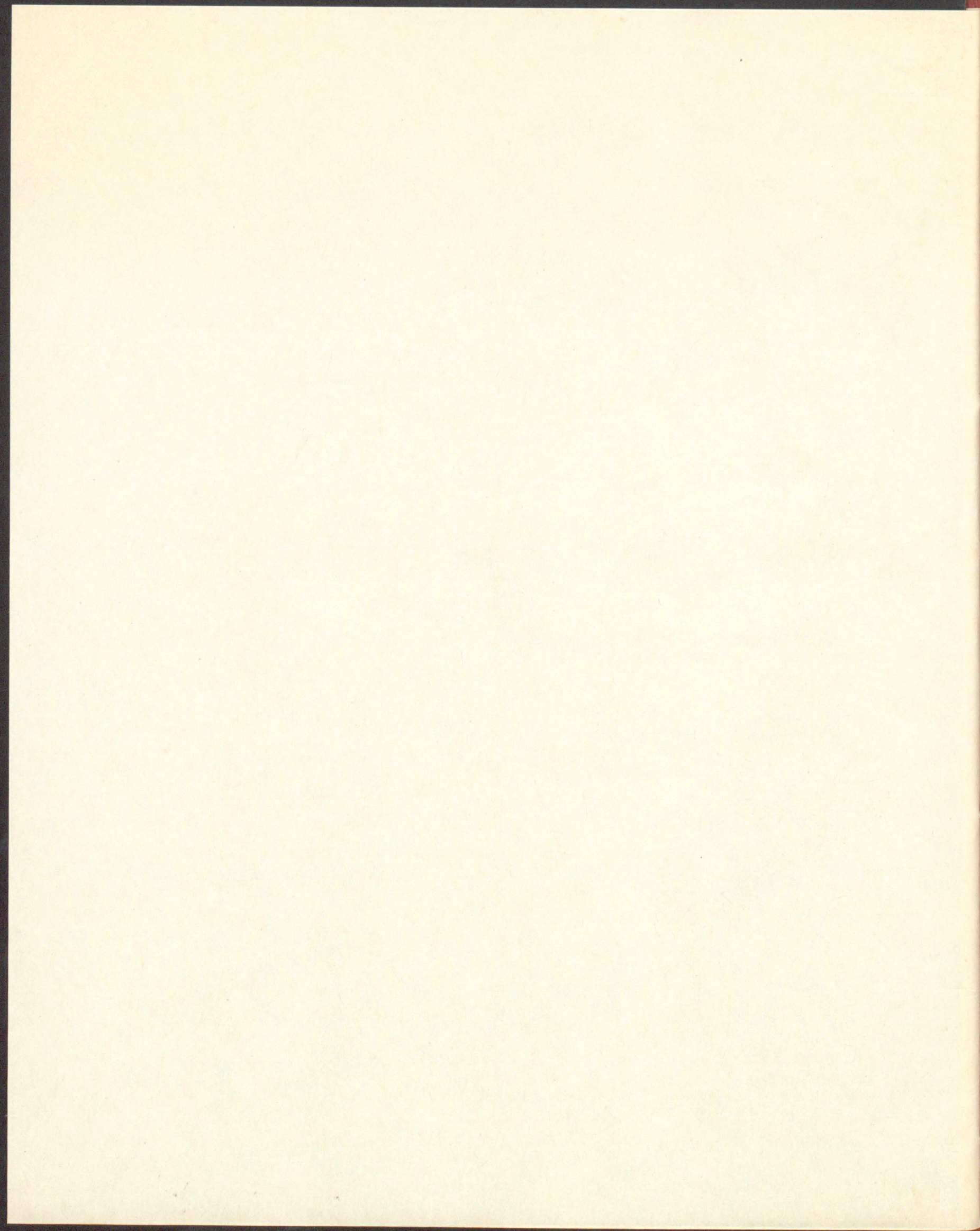
pedale

dim

7

smorzando London, 15. Mai 1849.





11/11/11