

Mus. ant.

pract.

780

780

Mus. ant. pract.

F 80

10

F
N

423
EPITHALAMION

Musici numeris exornatum & compositum cum sex Vocibus
ita ut affectus verborum in textu cognoscantur, audi-
antur canendoq; observentur.

In Honorem Nuptiarum

AMPLISSIMI ATQVE
SPECTATISSIMI VIRI DOMI-
NI JUSTI BERGMANNI INCLYTÆ REIPUB:
Imperialis Mulhusinæ civis primarii &c. Sponsi

Simul Et

HONESTISSIMÆ ATQVE OR-
NATISSIMÆ MATRONÆ JUDITHÆ, QVONDAM
Amplissimi atq; Præstantissimi Viri Domini SAMUELIS DRILLERI,
Patricii & Senatoris Reipub: Salfeldensis &c. p. m. reli-
ctæ Viduæ Sponsæ dilectissimæ

A

DAVIDE THVSIO ex Comitatu Mansfeldico,
Anno à Virginis partu 1609. 31. Octobris



*Metropolis Tyringorum typis Martini
Spangbergii elaboravit.*

EPIPHANION

APPREHENSIVISSIMI
VIRIDISSIMI



ATQVE

CAUSAE

CAUSAE

CAUSAE



TEXTUS HARMONIAE

PRO PRIMA PARTE

Cum raptæ Viduus desleres funera Costa
Sic modus in lachrymis Arbitræ Orbis ait.
Altera Saliades inter lætissima Conjunx
En luctus Veniet fida medela tui.



PRO SECUNDA PARTE.

Frugis prima fuit sed hæc erit altera frugis
Sic erit ut doleas fata priora minus.
Sic placuit Superis Borea spirante vicissim
Nubila quæ fuerat, clarius ire diem.

J. B. R.



A ij

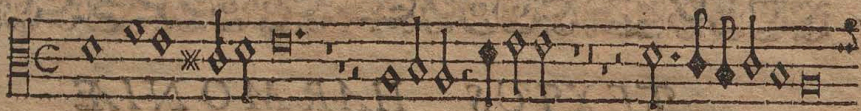
Cum

Tenor.

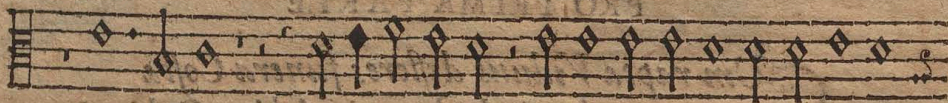
a. 6.

David Thusius.

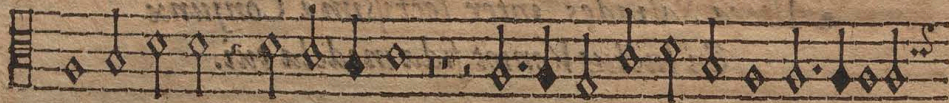
C



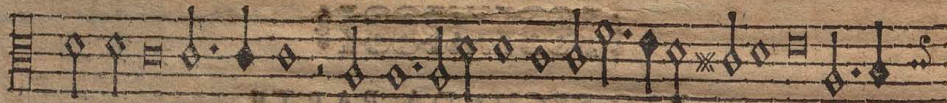
Um raptæ Viduus ij, de feres



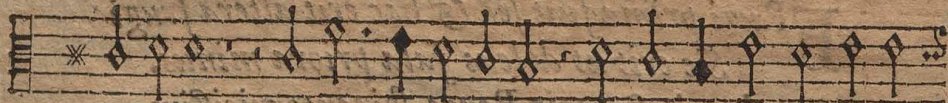
de feres funera costæ sit modus ij, sit modus,



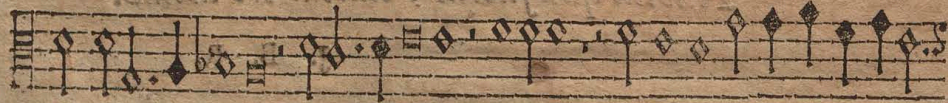
in lachrymis ij, Arbitrator orbis ait: Altera Sa-



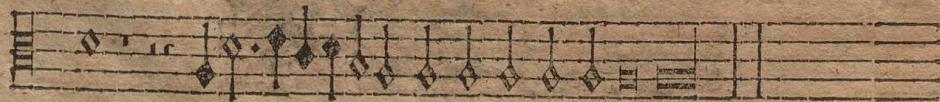
liades, altera Saliades, inter lectif sima con-



junx inter lectif sima conjunx. inter lectif sima con-



junx En lu Cus en lu Cus Veniet ij, fida medela tu-



i, fida medela tui, fida medela tu i.

Secunda.

SECUNDA PARS.



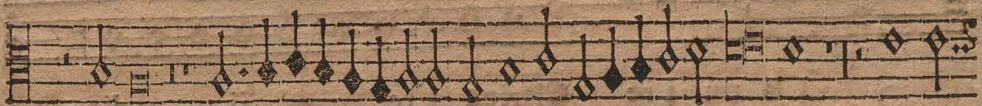
Ru gi ij. frugi ij.



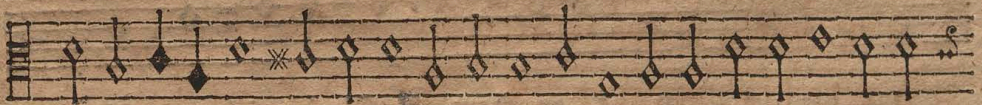
pri ma fuit ij. prima fu-



it Sed & hæc erit altera ij. sed & hæc erit altera



frugi fru gi ij. frugi ij. Sic e-



rit ut do leas fata priora minus priora minus sic



pla cu it su pe ris, ij. Bo re a spi-

A ij. rante.

Tenor.

2. 6.

David Thufius.



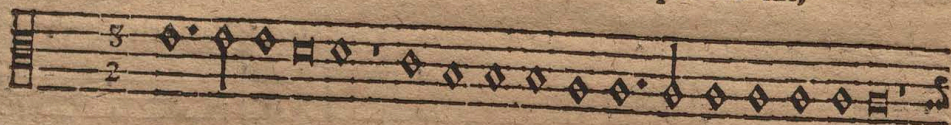
rante ij. Borea spiran



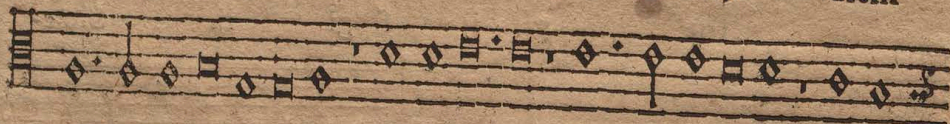
te spiran te spirante, Vicissim Borea spirante, Borea spi-



rante vicissim Nubi laquæ fu erat quæ fue rat,



Clarius i re Clarius i re ij. diem



Clarius i re diem i re diem Clarius i re Clari-



us i re Clarius i re diem,

1141

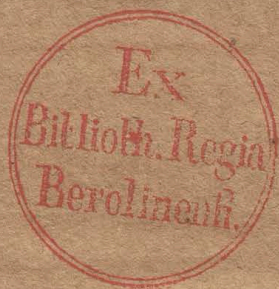
Bill

3111

1191

1111

1111



EX
Biblioth. Regia
Berolinens.

EX

BIBLIOTHECA

POELCHAVIANA.

Mus. pract. ant.

