

Mus. ant.

pract.

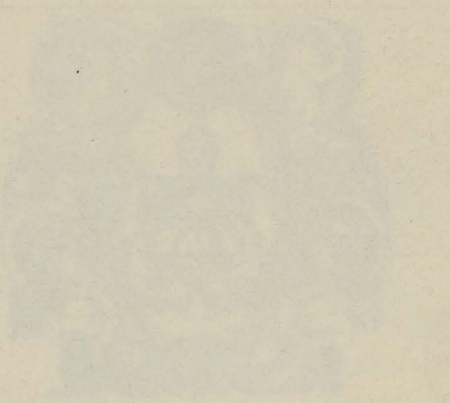
π 623

Mus. ant. prait. A 623

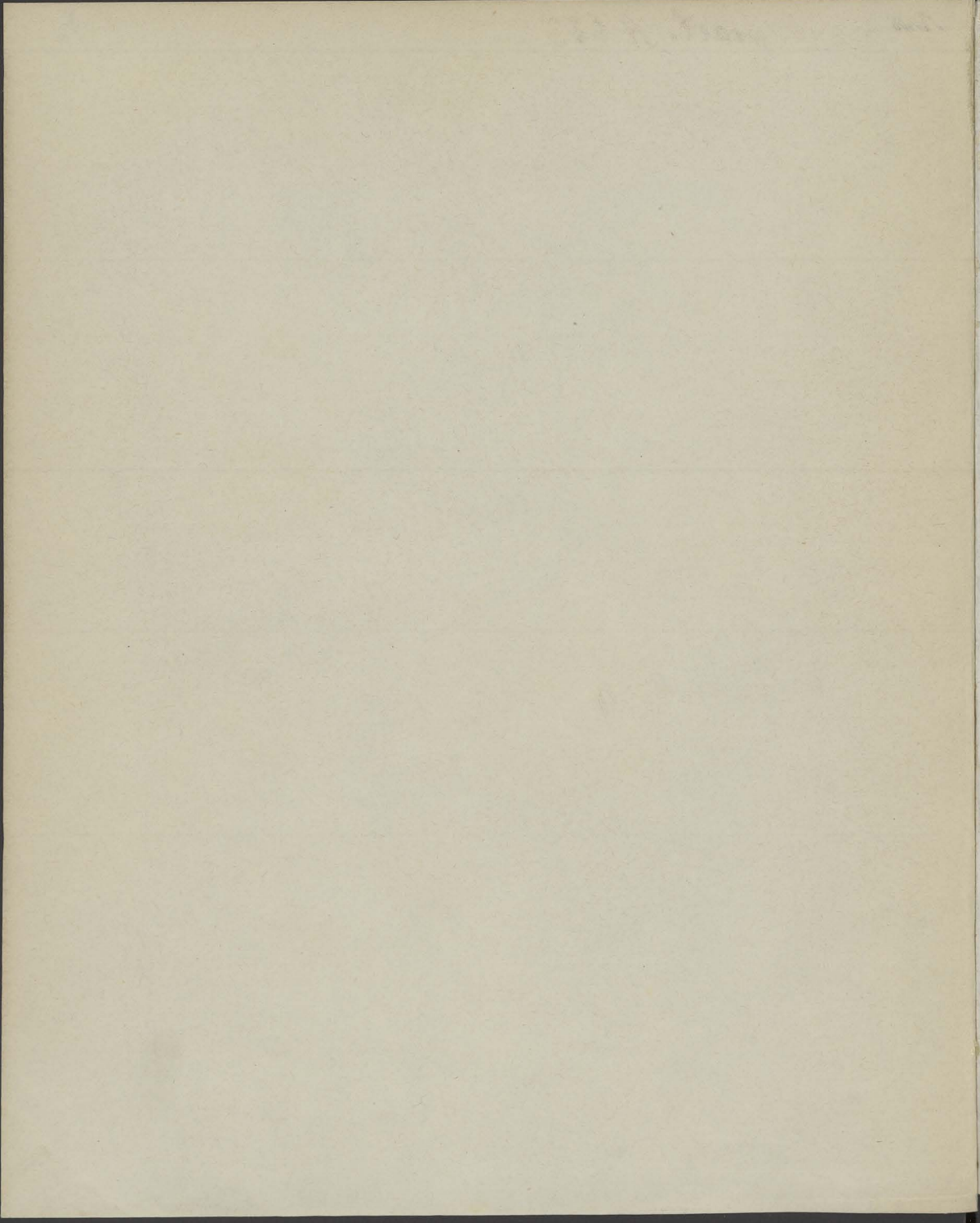
THE
MESSIAH

BY
JOHN DEE
OF
MIDDLESEX

IN
THE
YEAR
1641

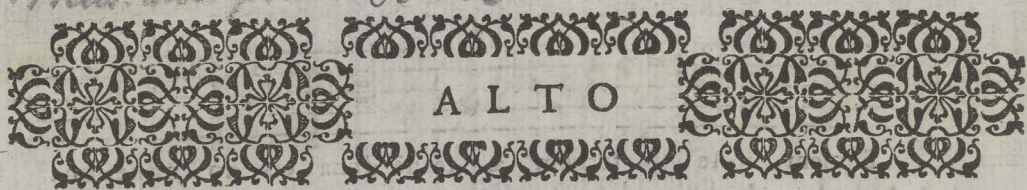


PRINTED
BY
J. STURM
IN
THE
YEAR
1641



P

Mus. ant. pract. A 623



ALTO

MESSA
PRO DEFUNCTIS,
A QUATTRO VOCI,
DEL R. D. MATTEO ASOLA VERON.

Nuouamente ristampata.

Si vis etiam alterum canere Chorum, in Secundo volumine querito.



MEDIOLANI,
Apud Franciscum, & heredes Simonis Tini.

M. D. LXXXX.

R Equiem Ae terram æ ternā dona eis do mine dona
e is domine & lux perpetua & lux perpe tua luceat e-
is luceat eis luce at e is luceat e is ij.

T E decet Et tibi reddetur votum in Hierusalem. Exaudi
orationem me am ad te omnis caro ve niet.

K Yrie eleyson ij.
kyrie e eleyson ij.

C Hriste eleyson Chri ste e eleyson ij. Chri ste eley-
son ij.

K Yric illi ambrosio leyson ij.

Kyrie cley son ij. Sequentia.

D I es i ra di es illa Soluet fa-

clū in fauil la Teste David cū Sibil la. Tuba

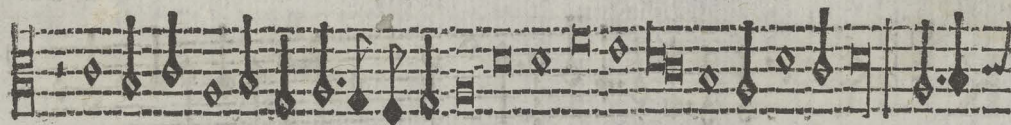
mirū spar get sonū sparget fo num Per sepulchra regio-

nū Coget omnes ante thro nū. Liber scriptus proferetur profere-

tur In quo totum cōtinetur contine tur Vnde

mūdu iudice tur. Quid sū miser tunc dicturus Quē patronū roga-

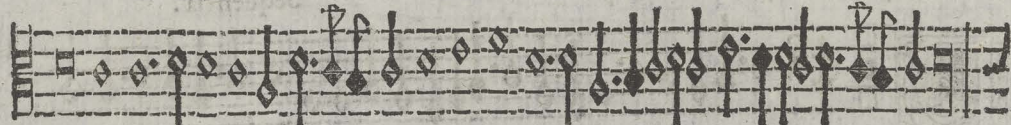
turns Dū vix iustus fit securus. Recordare Iesu pi



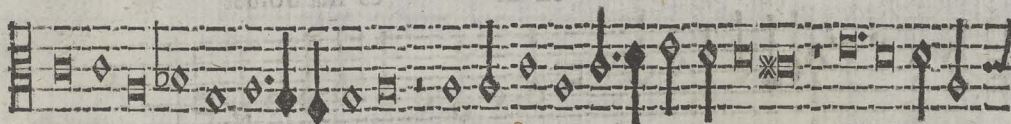
Qd sum causa tuæ vi æ Ne me perdas illa di e. Iu-



ste iudex ultio nis vl tionis ultionis



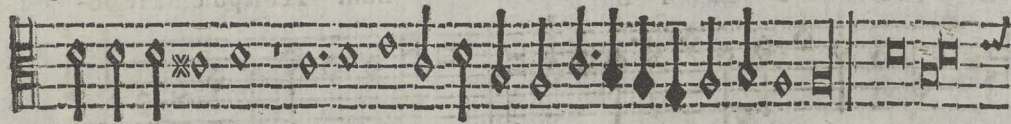
Donū fac remissio nis Ante diem ra tio nis.



Qui Mariam absol uisti & latronem ex audisti Mihi quoq;



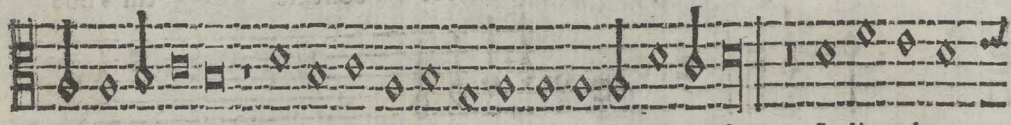
spem dedisti. Inter oues locum præ sta locum præsta Et ab hæ-



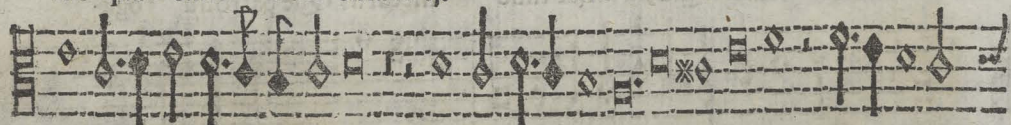
dis me sequestra Statuens in parte dex tra. Oro



sup plex & accli nis & acclinis Cor contritum quasi ci-



nis quasi cinis Gere curam ij. mei fi nis. Iudicandus



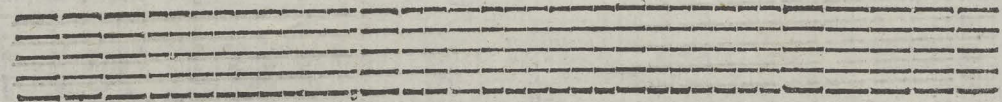
homo re us homo re us Huic ergo par ce



de us. Pie Iesu domine Dona eis re qui-



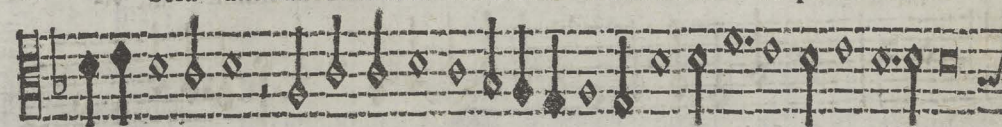
em A men amen amen.



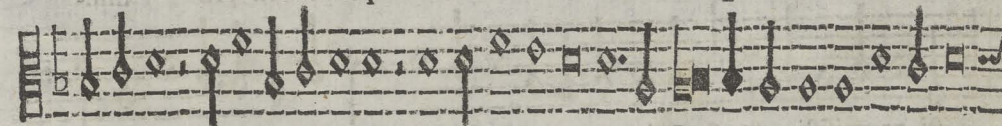
Domine Rex gloria li-



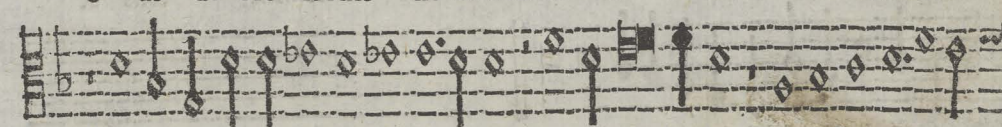
bera animas omnium fidelium defunctorum de pænis infer-



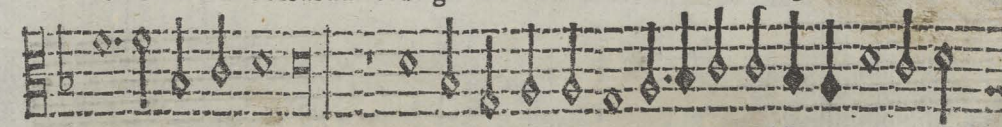
ni & de profundo lacu libera eas libera



eas de ore leonis ne absorbeat eas Tartarus eas Tartarus



ne cadant in obscurum sed signifer sanctus Michael representet e-



as in lucem sanctâ. Quâ olim Abraham pro misisti

5

pro misisti promifisti & femini e ius & femi-

ni eius & femini & femini eius.

Ostias Tu suscipe pro animabus illis quarum hodie

memoriam facimus Fac eas domine de morte transire ad vi-

tam. Quā olim Abraham pro misisti pro misisti pro misisti

pro misisti & femini e ius & femini eius &

femini & femini eius.



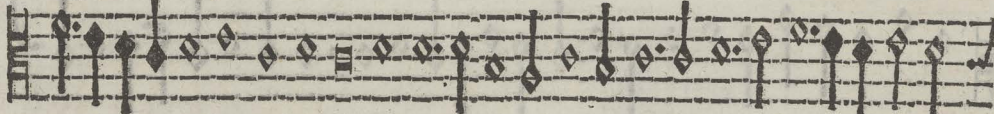
Sanctus Sanctus ij. Sanctus dominus de-



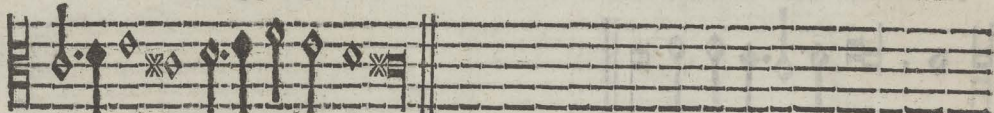
us Sa baoth Pleni sunt caeli & terra gloria tua O-



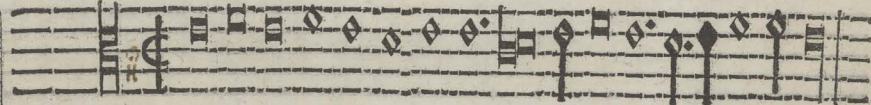
fan na in excelsis in excelsis. Benedi-



ctus qui venit in nomine domini Osanna in excelsis



cel sis in excelsis.



Agnus Dei Qui tollis peccata mundi dona eis requiem.



Agnus Dei Qui tollis peccata mundi dona eis requiem.



Agnus Dei Qui tollis peccata mundi dona eis qui-



em sempiternam sempiternam.



Handwritten musical notation on a five-line staff with a treble clef and a common time signature. The notes are diamond-shaped and connected by stems.

Vx aeterna Luceat eis do mine cum sanctis tu-

Handwritten musical notation on a five-line staff with a treble clef and a common time signature. The notes are diamond-shaped and connected by stems.

is in aeter num in aeter num quia pi us es.

Handwritten musical notation on a five-line staff with a treble clef and a common time signature. The notes are diamond-shaped and connected by stems.

R

Equiem Et lux perpetua luceat e x in an is

Handwritten musical notation on a five-line staff with a treble clef and a common time signature. The notes are diamond-shaped and connected by stems.

cum sanctis tuis in aeternum in aeter num quia pi us

Handwritten musical notation on a five-line staff with a treble clef and a common time signature. The notes are diamond-shaped and connected by stems.

es quia pi us es.

Empty musical staff lines.

Empty musical staff lines.

Empty musical staff lines.

Empty musical staff lines.

